



Oben™

ACM-1400

4-Section Aluminum Monopod



You're on steady ground™

Thank you for choosing Oben™

Congratulations on the purchase of your new Oben monopod. The Oben™ ACM-1400 is a versatile and durable monopod. Its low weight and compact size makes it suitable for lightweight camera setups and easy travel. The leg features secure flip-locks for swift height adjustment.

A wrist strap is included to help secure the monopod and keep it stable during shooting, while an integrated leg warmer ensures a comfortable grip in cold weather conditions.

Please read this entire manual before using the ACM-1400 monopod.

Note: Images are for illustrative purposes only. Actual product may vary.



Warnings:

Do not exceed the monopod's maximum load capacity (17.6 lb).

Ensure that all appropriate locks are engaged when necessary.

Monopod should only be used in temperatures ranging between -22° to 140° Fahrenheit. Do not operate in saltwater. Dry monopod if it should become wet.

Remove the camera from the monopod during transport.

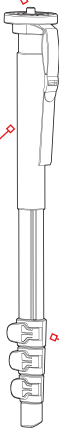
Keep out of reach of children.

Integrated Mount

The top mount offers the option to mount a camera directly, or a ballhead can be used for greater control.

Wrist Strap

Wrist strap for more secure handling while shooting.



Leg Warmer

Padded leg for handling the tripod in extreme weather.

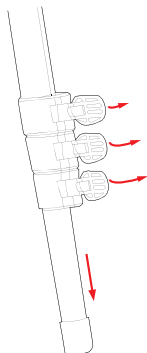
Flip-Locks

Flip-locks provide quick and secure height adjustment.

OPERATION

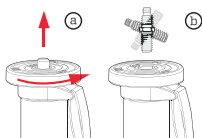
1. Leg Length Adjustment

A secure flip-lock design allows for rapid height adjustment for each telescopic tripod leg. To adjust the height of a leg, open the lever, position the leg at the desired height, and close lever to lock the leg in place.

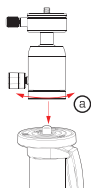


2. Mounting Screw

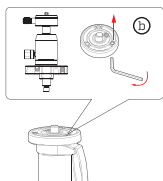
The tripod comes with a dual 3/8" and 1/4" mounting screw, allowing you to mount any tripod head or camera. To switch between the two sizes, remove the plate from the tripod by turning it counter-clockwise. Remove the screw, and insert it back into the plate in the opposite orientation. Mount the plate back onto the tripod by turning it clockwise.



3. Mounting A Ballhead

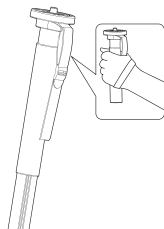


To mount the head, make sure that the tripod mount on the bottom is aligned with the tripod's mounting screw ① and twist clockwise until fully secured. Do not over tighten, as this may cause damage to the tripod or head.



For compatible ballheads, an additional screw can be inserted underneath the mounting base ② to prevent the ballhead from coming loose.

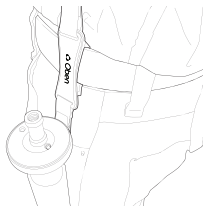
4. Wrist Strap



For more steady shooting, secure the wrist strap around your wrist while also gripping the pad (as shown). Ensure that there is adequate tension between the strap and your wrist to increase stability.

5. Belt Clip

The monopod's wrist strap includes an integrated belt clip. Simply slide the clip onto a belt for hands-free transport.





www.obensupports.com

© Copyright 2011 Oben Inc.
All other trademarks are the property of their respective owners