

VRS-LANC



Wired

## Remote Control

for Camcorders with LANC Terminal

**REVO**<sup>TM</sup>

*Thank you for choosing Revo and congratulations on your purchase of the Revo VRS-AVR Video Remote.*

The Revo VRS-AVR is a wired remote that can control video recording, photo, zoom, and power of a Sony camcorder that has an A/V remote terminal.

### *Warnings*

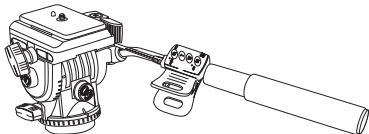
- Please read and follow these instructions, and keep this manual in a safe place.
- Do not attempt to disassemble or repair this product.
- Keep this product away from water and any flammable gases or liquids.
- Keep this product away from children.
- Do not expose this product to extreme high or low temperatures.

### *Box Contents*

- Wired remote control
- User manual

## Getting Started

- 1 Use the clip to attach the VRS-AVR to your tripod's pan handle.

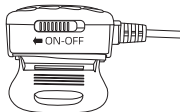


- 2 Make sure your camera is turned off, and plug the remote's A/V remote connector into your camera's A/V remote terminal.

### *Using the VRS-AVR with Your Camcorder*

To use the VRS-AVR as a video trigger with your camcorder, follow these steps:

- 1 Slide the VRS-AVR's power switch to the On position and release to turn on your camcorder. The remote's power indicator LED will glow green when your camcorder turns on.



- 2 Make sure your camcorder is in Video mode.
- 3 Set up your shot and make sure your camcorder is in focus.
- 4 Press the Start/Stop button on the VRS-AVR to start shooting video. The remote's recording indicator LED will glow red when shooting.

To stop shooting video, press the Start/Stop button again.

To turn off your camcorder, slide the remote's power switch to the On position and then release.

*To use the VRS-AVR to shoot still photos with your camcorder, follow these steps:*

- 1 Slide the VRS-AVR's power switch to the On position and release to turn on your camcorder. The remote's power indicator LED will glow green when your camcorder turns on.
- 2 Make sure your camcorder is in Photo mode.

- 3 Press the VRS-AVR's Photo button halfway to focus.
- 4 Press the VRS-AVR's Photo button all the way to shoot a still photo.

*Note: On some camcorders, you will be able to capture stills while shooting video. Check your camcorder's user manual for complete instructions and supported features.*

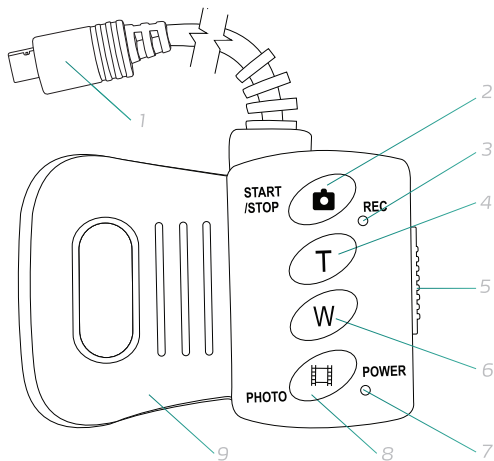
### *Using the Zoom Buttons*

Use the VRS-AVR's Telephoto and Wide-angle buttons to zoom in and out, respectively. Pressing halfway will cause your camcorder to zoom slowly, and pressing all the way will cause your camcorder to zoom quickly.

*Note: Some camcorders support only one speed when zooming via the remote. Check your camcorder's user manual for complete instructions and supported features.*

## *Specifications*

- Connector: A/V Remote
- Cable length: 5' (1.5 m)
- Dimensions: 1.6" × 1.1" × 0.8" (4 × 2.7 × 2 cm)
- Weight: 1.7 oz. (47 g)



## Overview

- |                           |                       |
|---------------------------|-----------------------|
| 1 A/V remote connector    | 6 Wide-angle button   |
| 2 Start/Stop button       | 7 Power indicator LED |
| 3 Recording indicator LED | 8 Photo button        |
| 4 Telephoto button        | 9 Clip                |
| 5 Power switch            |                       |

## Limited One-Year Warranty

This Revo product is warranted to the original purchaser to be free from defects in materials and workmanship under normal consumer use for a period of one (1) year from the original purchase date or thirty (30) days after replacement, whichever occurs later. The warranty provider's responsibility with respect to this limited warranty shall be limited solely to repair or replacement, at the provider's discretion, of any product that fails during normal use of this product in its intended manner and in its intended environment. Inoperability of the product or part(s) shall be determined by the warranty provider. If the product has been discontinued, the warranty provider reserves the right to replace it with a model of equivalent quality and function.

This warranty does not cover damage or defect caused by misuse, neglect, accident, alteration, abuse, improper installation or maintenance. EXCEPT AS PROVIDED HEREIN, THE WARRANTY PROVIDER MAKES NEITHER ANY EXPRESS WARRANTIES NOR ANY IMPLIED WARRANTIES, INCLUDING BUT NOT LIMITED TO ANY IMPLIED WARRANTY OF MERCHANTABILITY OR FITNESS FOR A PARTICULAR PURPOSE. This warranty provides you with specific legal rights, and you may also have additional rights that vary from state to state.

To obtain warranty coverage, contact the Revo Customer Service Department to obtain a return merchandise authorization ("RMA") number, and return the defective product to Revo along with the RMA number and proof of purchase. Shipment of the defective product is at the purchaser's own risk and expense. Revo is a registered trademark of the Gradus Group. Product warranty provided by the Gradus Group.

For more information or to arrange service, visit [revocinegear.com](http://revocinegear.com) or call Customer Service at 212-594-2353.

© Copyright 2014 Gradus Group  
[www.RevoCinegear.com](http://www.RevoCinegear.com)

