



# INTUOS®



Intuos (CTL-480, CTH-460, CTH-480)

[Setting up Intuos](#)

[Using your Intuos](#)

[Using the Pen](#)

[Using the ExpressKeys](#)

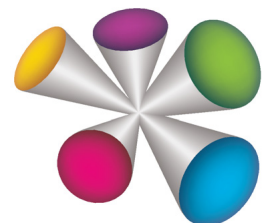
[The Intuos multi-touch experience](#)

[Customizing Intuos](#)

[Going wireless with Intuos](#)

[Troubleshooting](#)

[Technical support options](#)





Intuos User's Manual

Version 1.0, Rev J3113

Copyright © Wacom Co., Ltd., 2013

All rights reserved. No part of this manual may be reproduced except for your express personal use.

Wacom reserves the right to revise this publication without obligation to provide notification of such changes.

Wacom does its best to provide current and accurate information in this manual. However, Wacom reserves the right to change any specifications and product configurations at its discretion, without prior notice and without obligation to include such changes in this manual.

The above year indicates when this manual was prepared. However, the date of release to the users of the manual is simultaneous with the introduction into the market of the applicable Wacom product.

Intuos and Wacom are registered trademarks of Wacom Co., Ltd.

Adobe and Photoshop are either registered trademarks or trademarks of Adobe Systems Incorporated in the United States and/or other countries. Microsoft, Windows, and Vista are either registered trademarks or trademarks of Microsoft Corporation in the United States and/or other countries. Apple, the Apple logo, and Mac are registered trademarks of Apple, Inc., registered in the U.S. and other countries.

Any additional company and product names mentioned in this documentation may be trademarked and/or registered as trademarks. Mention of third-party products is for information purposes only and constitutes neither an endorsement nor a recommendation. Wacom assumes no responsibility with regard to the performance or use of these products.

ExpressKey is a registered trademark of Ginsan Industries, Inc., and is used with permission.





## TABLE OF CONTENTS

ABOUT THE MANUAL	5	Installing multiple tablets	38
YOUR INTUOS TABLET	6	GOING WIRELESS WITH INTUOS	39
System requirements	6	Wireless accessory components	39
Intuos pen	8	Wireless setup	40
Pen holder	8	Establishing a wireless connection	41
SETTING UP INTUOS	9	Optimizing the wireless connection	42
Connecting Intuos to your computer	9	Wireless module removal	43
Installing the driver	10	Battery and power management	43
The tablet active area	11	Charging the battery	43
Working with multiple monitors	12	Battery and wireless connection status	44
Control panel basics	12	Power saving features	45
USING YOUR INTUOS	13	Battery life information	46
Using the Pen	13	Battery replacement	47
Holding the pen	14	Wireless receiver storage	48
Positioning	15	Testing the wireless connection	48
Clicking	15	TROUBLESHOOTING	49
Erasing	15	Testing your tablet	50
Dragging	15	Testing the tablet controls and tools	52
Working with pressure sensitivity	15	Testing the ExpressKeys	53
Using the side switch	16	Testing a pen	53
Using the ExpressKeys	16	TROUBLESHOOTING TABLES	54
ExpressKey defaults	17	General problems	54
Application-specific Expresskey defaults	17	Pen problems	55
THE INTUOS MULTI-TOUCH EXPERIENCE	18	Touch problems	57
Navigating with touch	19	Wireless connection problems	58
Setting the touch options	20	Windows-specific problems	59
Using the Expresskey display	21	Mac-specific problems	60
CUSTOMIZING INTUOS	22	Technical support options	62
Control panel overview	23	Obtaining software updates	63
Adjusting tip feel and double-click	24	Care and maintenance	63
Tablet to screen mapping	25		
Portion of screen area	26		
Portion of tablet area	27		
Button functions	28		
Using and customizing the Radial Menu	33		
Working with Display Toggle	34		
Customizing your application settings	35		
Creating an application-specific setting	36		
Changing application-specific settings	37		
Removing application-specific settings	37		
Options	37		
Managing preferences	38		





APPENDIX	64
Replacing the pen nib	64
Uninstalling Intuos	65
Using applications integrated for tablet control	66
Pen and digital ink capabilities in Windows	67
Product information	68
Ordering parts and accessories	68
Warranty Service	69
Warranty Service in the U.S. and Canada	69
Warranty Service Outside of the U.S. and Canada	69
GLOSSARY	70
INDEX	72









## ABOUT THE MANUAL

This manual provides quick access to information about your [Intuos](#). The information is common to Windows and Mac computers. Windows screen captures are shown, unless otherwise noted.

- Go directly to [Table of Contents](#) or [Index](#) topics by clicking on them.
- Use the navigation controls to move through the manual.

			Go to front page.
Contents	Go to table of contents.	 	Page back, or page forward.
Index	Go to index.		Go back to previous view.

- Use your .pdf viewer zoom-in tool to increase the size of the manual on your display screen. See the viewer application help for information on any additional tools that help you use and print the manual.
- SMALL CAPITAL LETTERS are used for names of keyboard keys, dialog boxes, and control panel options.
- Be sure to see the Important Product Information document for Intuos, located on the Intuos installation CD. The document includes product safety precautions, specifications, and your license agreement.
- The following information is not included with this product: information about your specific computer hardware or operating system, or information about your application software. Your best source for this information is the set of manuals and discs that came with your hardware, operating system, or application.
- In addition to the built-in inking support found within Microsoft Windows 8, Windows 7 and Vista, many graphics applications also support pressure sensitivity and the pen eraser. You can find a listing of applications that support these features on the Wacom web site (see [Product information](#)).

Wacom's philosophy is to continually improve all of its products. As a result, engineering changes and improvements are made from time to time. Therefore, some changes, modifications, and improvements may not be covered in this manual.





## YOUR INTUOS TABLET

All models of the Intuos support pen input. The CTH-480 and CTH-680 Intuos models include a pen with an eraser. The model number for your Intuos is on the back of the tablet.

Your Intuos can only be used with a compatible Wacom pen, such as the pen that came with your product, or a Wacom accessory tool specified for use with Intuos. See [Ordering parts and accessories](#).

Touch capability is supported on the CTH-480 and CTH-680 models. See [The Intuos multi-touch experience](#).

The Wacom wireless accessory kit is sold separately. Not all tablet models or all accessories are available in all regions.

When you have unpacked your Intuos, make sure that you have received the following items and accessories. One or more of these items are packed into the center compartment on the back of the tablet.

- Intuos tablet
- Pen
- Installation CD
- Quick Start Guide (booklet)
- Three extra pen nibs
- Pen color rings
- Power cord
- Pen holder, for attachment on the back of the tablet

These items and features are illustrated and described below.

## SYSTEM REQUIREMENTS

Make sure your computer meets the following minimum system requirements:

- **PC.** Windows 8 or Windows 7, 32 or 64-bit configurations, or Windows Vista. One available USB port. A CD-ROM drive is required to install the driver from the Installation CD.
- **Mac.** OS X, v10.6 or later. Intel-based platforms only. One available USB port. A CD-ROM drive is required to install the driver from the Installation CD.

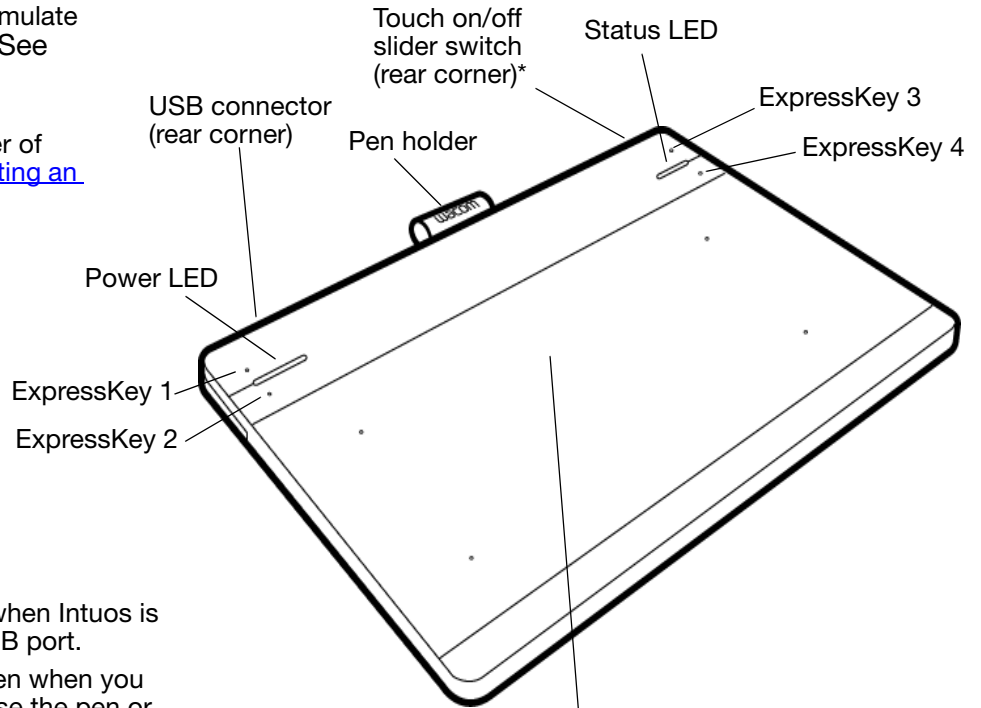
Note: You may also download and install the driver from the Wacom website, for both Windows and Mac operating systems (see [Installing the driver](#)).



[ExpressKeys](#)

Use the four customizable ExpressKeys on the upper corners of the Intuos to set frequently used functions or keystrokes, or to simulate button clicks or modifier keys. See [Using the ExpressKeys](#).

The ExpressKeys also provide automatic settings for a number of popular applications. See [Creating an application-specific setting](#).



LED indicators

- The Power LED will glow when Intuos is connected to an active USB port.
- The Status LED will brighten when you touch the active area, or use the pen or ExpressKeys.

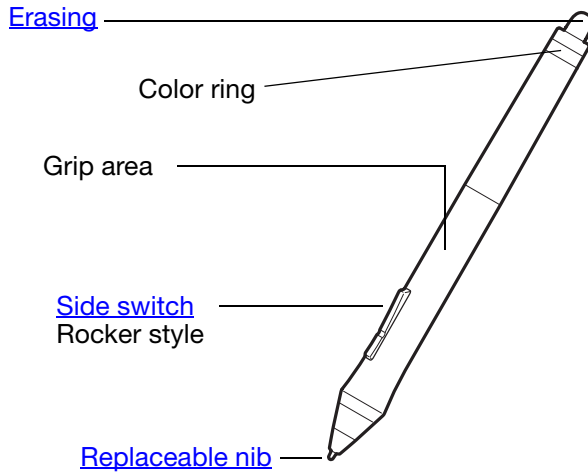
For wireless operation, see [Battery and wireless connection status](#).

The active area of the tablet is where touch, pen, or other Intuos tools are detected. The boundaries of the active area are shown by four small dots on the corners of the metallic portion of the tablet.

\*Touch is available on the Intuos CTH-480 and CTH-680 models.

## INTUOS PEN

All Intuos pens are cordless and battery free. An eraser is included on the pen with the CTH-480 and CTH-680 models.



### Intuos Pen Color Rings

Use the pen color rings to personalize your pen, or to distinguish it in a multi-user environment. To change the color ring, unscrew the back of the pen cone and replace the ring with a different ring.

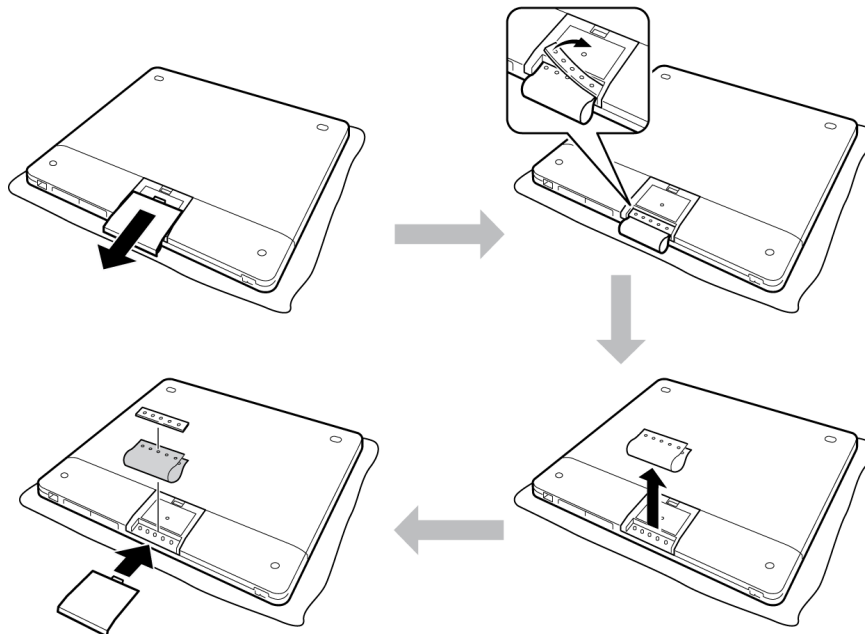
Colored rings may not be available in all regions.

See [Product information](#) to learn more about which applications currently support the special features of your Intuos pen. For information on additional tools and accessories, see [Ordering parts and accessories](#).

**Warning:** Choking hazard. Prevent children from dislodging, chewing on or swallowing parts of the pen. The pen nib or side switch may be accidentally dislodged if children chew on them.

## PEN HOLDER

Pen holders are provided. You can add a pen holder as shown, and use it to personalize your Intuos.







## SETTING UP INTUOS

To minimize fatigue, comfortably organize your work area. Position your tablet, pen, and keyboard for easy access without unnecessary reaching.

Adjust your monitor so you can view it comfortably with minimum eyestrain, and placed approximately an arm's length in front of you. For best results, position the tablet so the screen cursor follows the same direction as your hand movements on the tablet.

Use a gentle grip when working with the Intuos pen or other tools.

If you are using the tablet primarily as a creative tool, consider placing the tablet below the keyboard and centered underneath your monitor.

[Installing the driver](#)

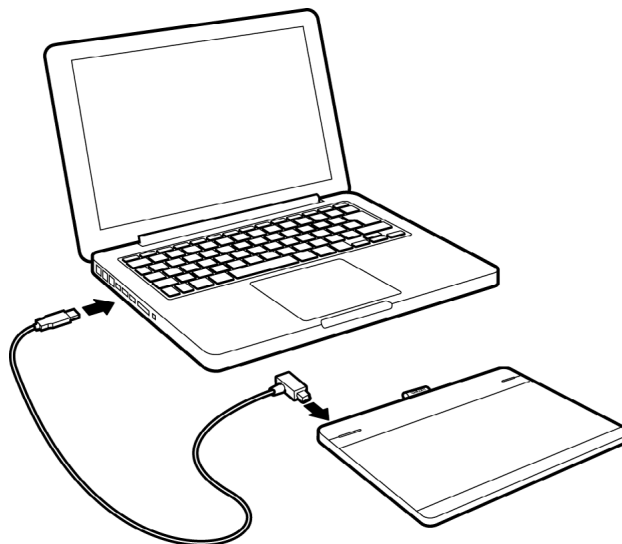
[The tablet active area](#)

[Control panel overview](#)

## CONNECTING INTUOS TO YOUR COMPUTER

A USB cable for connecting the Intuos to your computer is provided.

- Connect the USB cable to your computer and to the Intuos as shown. When the connection is complete, the Status LED on the left side will light (white).
- Touch the active area of the Intuos with your pen. The Status LED on the right will light.
- Touch the active area with your finger. The Status LED will light. If it does not, move the touch on/off slider switch on the top right corner of the tablet to the opposite position, and touch the active area again. The Status LED should now light.





## INSTALLING THE DRIVER

On Windows 8, Windows 7 and Vista operating systems, the driver installs when Intuos is connected to your computer for the first time. The connection is indicated when the Power LED lights.

The driver is also available from the Installation CD, or as a download from the Support area of the Wacom website.

For the Mac operating system, you will need to install the driver from the CD, or download and install it from the Wacom website.

Note: Your Intuos will not work without the driver. Make sure to install the driver to use your tablet.

To install the driver:

1. Save your work and close all open applications.
2. Temporarily disable any virus protection programs.
3. Install the driver:
  - For Windows 8, Windows 7, or Vista, select the driver installation option that appears after the Intuos and your computer are connected. The driver will be downloaded and installed from the Wacom website.  
You may also access the driver from the CD, or download it from the Wacom website Support area.
  - For Mac OS, insert the Installation CD into your computer's CD-ROM drive. If the software installer menu does not display, double-click the INSTALL or STARTUP icon shown on the CD. You may also download the driver manually from the Wacom website Support area.
4. Follow the prompts to install the driver software.
5. Reactivate your virus protection program.
6. After completing the software installation, make sure you can use your pen on the Intuos to move the screen cursor.  
When you place the pen tip on or close to the active area, the screen cursor should immediately jump to a corresponding position approximately beneath the pen tip. Lift the pen tip and place it in a different location. The screen cursor should again jump to the new position.
7. Check the Notes linked to the driver download page for updated information. Review the Important Product Information document located on the Installation CD for cautions and warnings. If you have trouble installing the driver, see [Troubleshooting](#).

Notes:

User-specific preferences are supported. After logging on, each user can customize their personal settings in the Wacom Tablet control panel. Switching to another user (either by logging on, or fast user switching methods) will load the settings for that user.

If you lose cursor control, the preferences may be corrupted. See [Managing preferences](#) to delete the current preference settings and return the Intuos to its factory default condition.

Driver installation automatically activates the pen input functions available in Microsoft Windows 8 and Windows 7 (except for Windows 7 Starter and Home Basic). See [Pen and digital ink capabilities in Windows](#).

To download a new software driver (when available) from the Internet, see [Obtaining software updates](#).

To uninstall the software driver, see [Uninstalling Intuos](#).





## THE TABLET ACTIVE AREA

The tablet active area is the area of your Intuos tablet that senses pen input or touch.

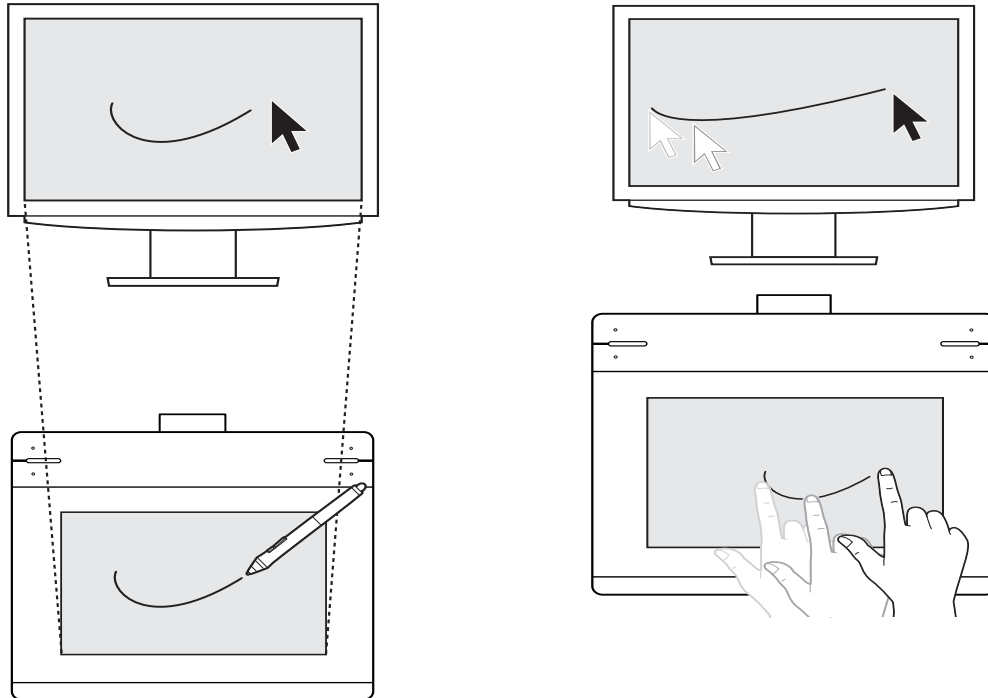
Touch is ignored whenever the pen tip or eraser is within the proximity range of the tablet. Lift the pen and your hand away from the tablet active area to enable touch.

Wherever you place the pen on the tablet, the screen pointer will jump to the corresponding point on the screen. The screen pointer indicates pen position, and follows the movement of the pen across the tablet surface.

Learn about [using the Grip Pen](#).

Note: The active area is a mapped representation of your computer screen(s). By default it uses the entire screen, or all screens if you have multiple displays. You can customize the mapping relationship for pen input by setting the [Tablet to screen mapping](#).

Learn about [the touch experience with Intuos](#). Also see the Wacom Gesture Guide for Windows and Mac at [www.wacom.com/en/support/manuals](http://www.wacom.com/en/support/manuals).

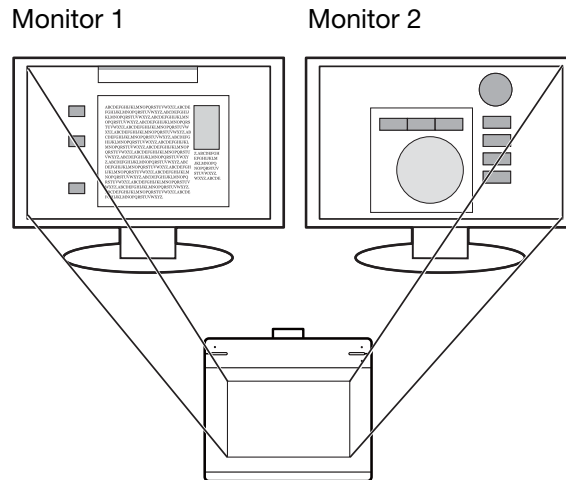




## WORKING WITH MULTIPLE MONITORS

If you are using more than one monitor, Intuos will map to the monitors based on how they are configured in the display properties control panel.

- If more than one monitor is in use and you are in extended monitor mode, the tablet maps to all monitors as if they were one large display.



Example of tablet mapping to the entire system desktop, which is displayed on two monitors.

- If your monitors are in mirror mode (both monitors display the same content), the tablet maps to the entire space on each monitor and the screen cursor is displayed on each monitor simultaneously.

See your hardware and operating system documentation for details on configuring your computer and operating system for use with multiple monitors.

### Tips:

- You can customize the tablet to map to a single monitor or to a portion of the monitor area. See [Tablet to screen mapping](#).
- When your system is configured with multiple monitors, you can assign the DISPLAY TOGGLE function to an ExpressKey. This enables you to toggle the current tablet mapping and screen cursor between the primary display and your other monitors. See [working with Display Toggle](#).

## CONTROL PANEL BASICS

After mastering the basics of using your Intuos tablet, you may want to customize the way touch or pen input works. The Wacom Tablet control panel is where you customize your Intuos tablet settings.

[Control panel overview](#)





## USING YOUR INTUOS

If you are new to using the Intuos, read the following sections. See also [the touch experience with Intuos](#).

**Important:** Use only a compatible Wacom pen, such as the pen that shipped with your product, or a Wacom accessory tool specified for use with Intuos. Other pens may not function properly.

See [Ordering parts and accessories](#).

### USING THE PEN

The Intuos pen senses the amount of pressure you apply to the pen.

There are four basic techniques for using the pen on the active area of the tablet: pointing, clicking, double-clicking, and dragging. If you are unfamiliar with using the pen, try the exercises on the following pages. See [The tablet active area](#).

Note: The pen disengages touch whenever the pen tip or eraser is within the proximity range. Proximity range is within approximately 14 mm (0.5 inch) of the tablet surface.

Lift the pen and your hand away from the tablet active area to enable touch.

Use the slider switch on the back corner of the Intuos to enable or disable touch.

[Holding the pen](#)

[Using the side switch](#)

[Clicking](#)

[Dragging](#)

[Using the side switch](#)

[Working with pressure sensitivity](#)

[Erasing](#)

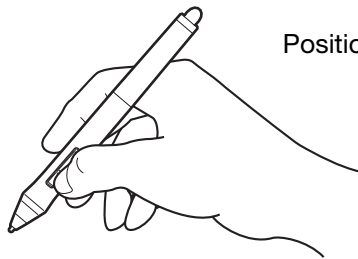
[Using the ExpressKeys](#)



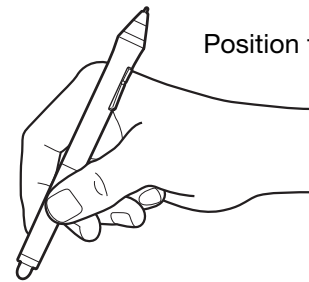


## HOLDING THE PEN

Hold the Intuos Pen as you would a normal pen or pencil. Adjust your grip so that the side switch is in a convenient location where you can easily toggle it with your thumb or forefinger. Be careful not to accidentally press the switch while drawing or positioning with the pen. Tilt the pen in any way that feels most comfortable.



Position for drawing



Position for erasing

### Important:

- When not in use, place the pen in the pen holder (loop), or lay it flat on your desk. To maintain the sensitivity of your pen, do not store the pen where it will rest on its tip or eraser.
- Leaving an Intuos tool on the tablet may interfere with screen cursor positioning when using other pointing devices, or may prevent your computer from going to sleep.





## POSITIONING

To position the screen cursor, move the pen slightly above the active area without touching the screen surface. Press the pen tip on the screen to make a selection.

## CLICKING

Tap the screen once with the pen tip, or touch it to the screen with enough pressure to register a click.

To double click, press the upper side switch (when set to DOUBLE CLICK), or quickly tap the screen twice in the same place with the pen tip.

## ERASING

In supported applications the pen eraser works like the eraser on a pencil.

Visit the Wacom website to learn about applications that support the eraser. See [Product information](#). If the eraser is not supported in an application, you can still use it for positioning, drawing, or annotation.

## DRAGGING

Select an object, then slide the pen tip across the screen to move the object.

## WORKING WITH PRESSURE SENSITIVITY

The pen responds to the nuance and inflection of your hand movements, enabling you to create natural-looking pen and brush strokes within applications that support this feature.

To draw, ink, or write with pressure sensitivity, move the pen inside the active area while applying various amounts of pressure downward on the tip of the pen. Press hard for thick lines or dense color. Press gently for thin lines or softer color. Some applications require that you first select a pressure-sensitive tool from the application tool palette. To adjust tip feel, see [Adjusting tip feel and double-click](#).

Visit the Wacom website to learn about applications that support pressure. See [Product information](#).





## USING THE SIDE SWITCH

The pen side switch has two customizable [functions](#) that can be selected by rocking the switch in either direction. You can use the switch whenever the pen tip is within approximately 14 mm (0.5 inch) of the tablet active area. You do not have to touch the pen tip to the tablet in order to use the switch.

The default switch positions are:

Upper: DOUBLE CLICK

Lower: RIGHT CLICK

Press the upper switch to double-click. This is easier than tapping twice with the pen tip.

Press the lower switch to right-click and bring up application-specific or icon-specific menus.

**Tip:** To position a document or image in any direction within the active window, set a switch function to PAN/SCROLL, then press the pen button and move the pen tip across the tablet. As you move the pen tip, the document or image follows the direction of pen movement on the tablet. Release the pen button or lift the pen tip from the tablet surface when done.

In some application windows the document will precisely follow the screen cursor as you move the pen tip. In others it will simply move in the same general direction as the screen cursor.

## USING THE EXPRESSKEYS

You can use the ExpressKeys to:

- Set a key to a commonly used keyboard shortcut.
- Set a key to launch a commonly used file or application.
- If you prefer not to use the side switches on your Grip Pen, set a key to right- or double-click.
- Choose from any of the other available [functions](#).

**Important:** Some applications can override and control the ExpressKey functions. For details, see [Using applications integrated for tablet control](#).

Use the Wacom Tablet control panel to customize the ExpressKey options. See [Control panel overview](#).







## EXPRESSKEY DEFAULTS

Use individual ExpressKeys to perform frequently used functions or keystrokes. ExpressKeys can also be used to modify touch, pen, or other tool properties as you work.

When you first begin working with your Intuos, the ExpressKeys are set to tablet default functions.

The ExpressKey defaults for Windows 8, Windows 7, and Vista are:

- ExpressKey1: Shift
- ExpressKey2: Alt
- ExpressKey3: Control
- ExpressKey4: Windows

The ExpressKey defaults for Mac are:

- ExpressKey1: Shift
- ExpressKey2: Option
- ExpressKey3: Command
- ExpressKey4: Control

## APPLICATION-SPECIFIC EXPRESSKEY DEFAULTS

If you are working with a commonly-used application such as Photoshop, Illustrator or Corel Painter, the Intuos driver will sense the application and automatically set the ExpressKeys to commonly used functions for that application.

To view the current settings for the ExpressKeys, press an ExpressKey to activate the ExpressKey display on your primary monitor. The ExpressKey you touch appears highlighted in the display. See [Using the Expresskey display](#).

**Note:** ExpressKeys can be operated in combination with one another. For example, customize one key for the CTRL function and another for ALT. When you press both keys at the same time a CTRL+ALT function is initiated.





## THE INTUOS MULTI-TOUCH EXPERIENCE

Intuos is designed to enhance the way you work. Touch enables you to interact with a computer using only your fingertips on the Intuos tablet.

You can use touch on Intuos as you would on any other Mac or Windows device, such as phones, trackpads, and notebooks. A few touch gestures differ on the Windows and Mac operating systems.

To enable or disable touch, move the slider on the top right corner of the Intuos to the opposite position (see [Your Intuos tablet](#)).

To view the Wacom Gesture Guide for Windows and Mac gestures, go to [www.wacom.com/en/support/manuals](http://www.wacom.com/en/support/manuals).

Touch is activated whenever you touch the tablet active area.

- When using touch, you can generally position your fingers as far apart as is comfortable. However, placing your fingers too closely together may be interpreted by the tablet as input from a single finger, or the tablet may confuse which finger initiated or performed an action or gesture. Your fingers must remain within the active area.
- Experiment with touch to see what works best for you. Take care to prevent accidental touches on the tablet when making gestures. For example, if your small finger or the palm of your hand touches the active area of the tablet when zooming or scrolling, then you may trigger an unanticipated right-click.

Note: For tablet models that support both pen input and touch, the pen disengages touch whenever the pen tip or eraser is within the tablet proximity range. Lift the pen and your hand away from the tablet active area to enable touch.

[Navigating with touch](#)





## NAVIGATING WITH TOUCH

The touch feature of your Intuos touch tablet enables you to control a computer using only your fingertips on the tablet surface. See [The tablet active area](#).

Touch is enabled or disabled using the slider switch (toggle) on the upper right corner of the tablet.

- Use basic actions to navigate and perform typical mouse operations.
- Use gestures to scroll, zoom, rotate, and perform other functions. Some gestures may provide a visual cue on your display screen to indicate when the gesture has been recognized by Intuos.

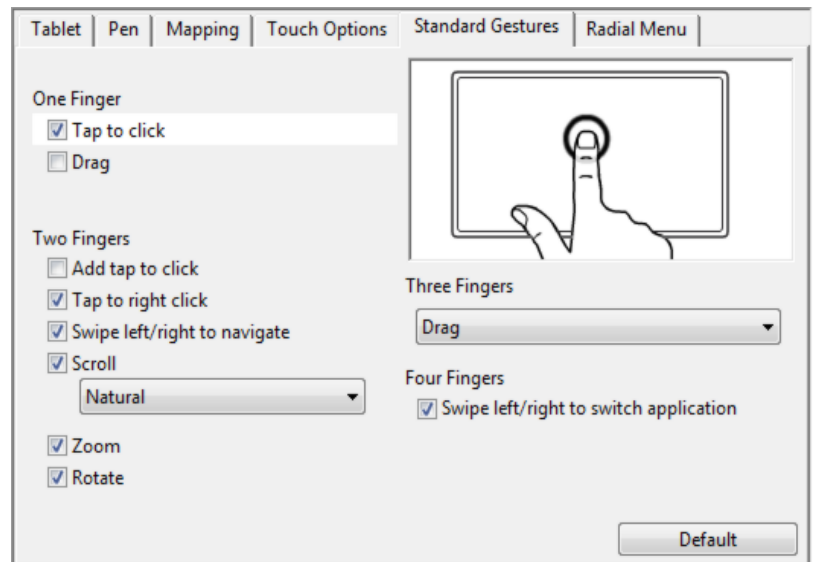
Some functions, such as a right-click, can be performed using different actions or gestures.

Position the screen cursor over a touch option to see a static image of that function.

If you do not choose a specific option to view, the control panel will display each option sequentially, from top to bottom.

This option can also be changed by assigning it to an ExpressKey.

See also [Navigating with touch](#) and [Using the Expresskey display](#).



You can also customize your ExpressKeys to perform some touch functions.

[Using the Expresskey display](#)

[Navigating with touch](#)



## SETTING THE TOUCH OPTIONS

Select the TOUCH OPTIONS tab. The touch options determine how fast you must move or tap your fingers in order for an action or gesture to be recognized.

Adjusts the screen pointer for speed of tracking and navigating. Choose a SLOW speed to move the screen cursor at a slower rate with more finger motion. Choose a FAST speed to move the cursor quickly with less motion.

Adjusts how fast you must tap to register a double-click. To test your setting, position the cursor over the TEST area and tap twice.

Pointer Speed

Slow Fast

Scrolling Speed

Slow Fast

Pointer Acceleration

Low High

Double-Tap Time

Longer System

Test

Default

Sets the scrolling speed of the SCROLL touch gesture.

Sets the acceleration level of the screen pointer. Choose a LOW setting for a slower response to finger motion on the tablet. Choose a HIGH setting for a quicker response.

Note: Touch speed and acceleration settings are independent of system (OS) settings. Changes you make to these Wacom Tablet control panel settings do not affect similar system settings. However, changes made to similar system settings may affect your Intuos tablet settings.



## USING THE EXPRESSKEY DISPLAY

You can view the current setting for any individual ExpressKey at any time.

- Press an ExpressKey to activate the ExpressKey display on your primary monitor. The ExpressKey you touch appears highlighted in the display.
- If an ExpressKey has been disabled it will be shown as disabled, or there may be no display for that key.
- The display will fade out after 2 seconds on the screen.
- To disable the display, choose the EXPRESSKEYS tab in the control panel and uncheck the SHOW EXPRESS VIEW box.
- You can view the display by pressing an ExpressKey set to SETTINGS.





## CUSTOMIZING INTUOS

Use the Wacom Tablet control panel to customize Intuos for the way you like to work.

[Control panel overview](#)

[Adjusting tip feel and double-click](#)

[Tablet to screen mapping](#)

[Button functions](#)

[Using and customizing the Radial Menu](#)

[Working with Display Toggle](#)

[Customizing your application settings](#)

[Options](#)

To open the Wacom Tablet control panel:

- **Windows 8.** From the Windows 8 Start screen, right-click in the screen's bottom left corner and choose CONTROL PANEL from the pop-up menu. If you are using the Windows 8 Classic Desktop, press the Windows key on your keyboard, or select the Windows icon in the Charms bar, to access the Start screen.
- **Windows 7 and Vista.** Click on the Windows START button and choose ALL PROGRAMS, then select WACOM TABLET and choose the WACOM TABLET PROPERTIES option.
- **Mac.** Open SYSTEM PREFERENCES from the Apple menu, or from the APPLICATIONS folder. Then click on the WACOM TABLET icon.

The control panel displays only those tabs and options that apply to your current tablet model and configuration. See [Control panel overview](#).

Note: User-specific preferences are supported. After logging on, each user can customize their personal settings in the Wacom Tablet control panel. Switching to another user will automatically load the settings for that user.



## CONTROL PANEL OVERVIEW

Use the Wacom Tablet control panel to customize your Intuos tablet or tools. The appropriate tabs are displayed, and the active applications are shown in the APPLICATIONS list. You can use the control panel to:

- Set a key to a commonly used keyboard shortcut or launch a commonly used file or application.
- Set a key to right-click or double-click if you prefer not to (or cannot) use the side switch on your pen.
- Choose from any of the other available [functions](#). See [Using the ExpressKeys](#)

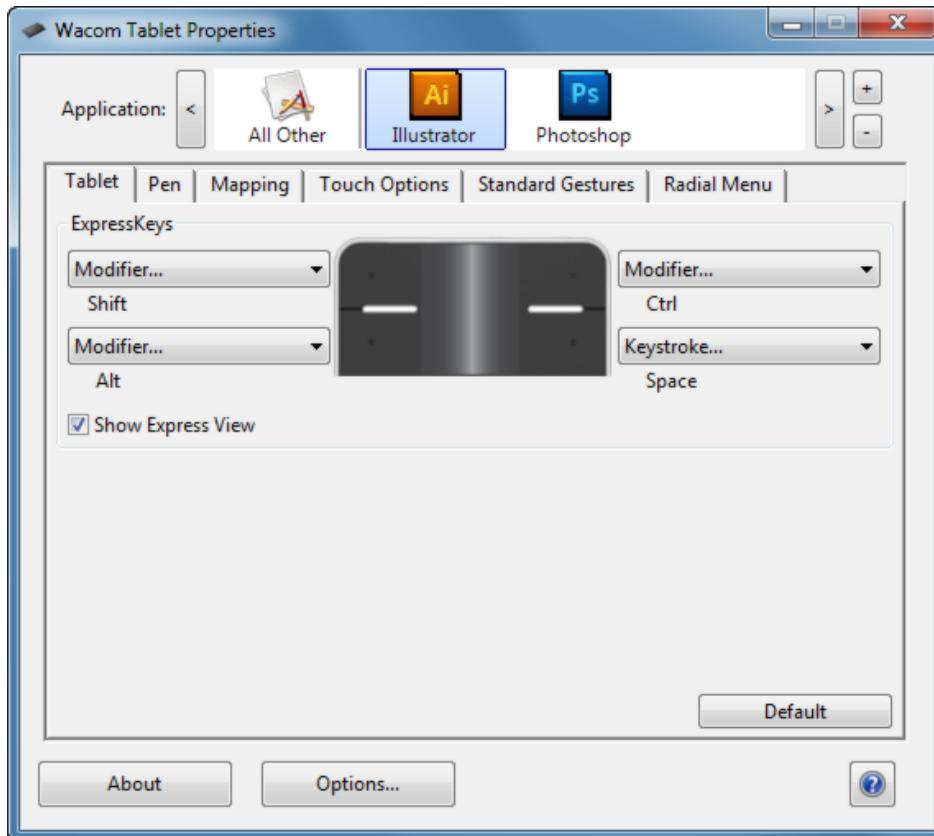
**Important:** Some applications can override and control the ExpressKey functions. For details, see [Using applications integrated for tablet control](#).

To customize, make changes to the tab controls. Experiment with different settings to find what works best for you. Current selections will be highlighted. Any changes you make will take effect immediately.

All settings shown below the list apply to the selected tablet or pen display. The control panel will not launch unless a supported tablet or pen display is connected to the computer.

Choose an ExpressKey [function](#) to perform when the key is pressed. ExpressKey functions can be defined for use with specific applications. See [using the ExpressKeys](#) for more information.

ABOUT and OPTIONS... display information and DIAGNOSE... options from your tablet.



The icon list shows your APPLICATION settings.

DEFAULT returns the selected tab to default settings. ? downloads or displays this manual.

Tool Tips are available for most control panel items. Position the cursor over an item and let it rest there. The appropriate Tool Tip will pop up in a few moments. Your keyboard tab and arrow keys can also be used to navigate the control panel.



## ADJUSTING TIP FEEL AND DOUBLE-CLICK

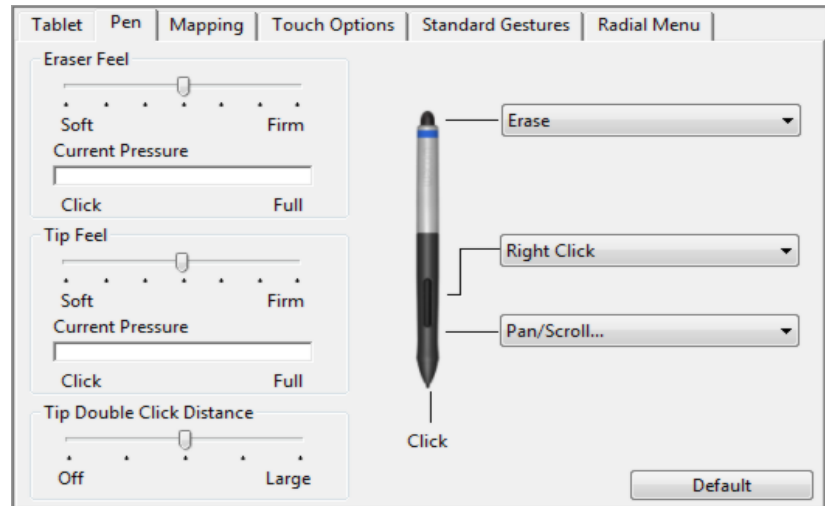
To adjust the feel and sensitivity of your pen and eraser, select the PEN tab.

TIP FEEL and ERASER FEEL customize the amount of pressure needed to click, draw, ink, or erase.

To create broad brush strokes or to click with a light touch, use a SOFT tip setting. For maximum control while drawing thin lines, use a FIRM tip setting.

To set the double-click distance from the tablet, use the Tip Double Click Distance slider.

With your screen cursor positioned over an empty area of the control panel, press down on the tablet with the pen eraser. Use the pressure bar to determine how hard you must press on the eraser to reach maximum pressure.



To set the functions for the eraser and side switch, select options from the dropdown menus beside the pen. The selected function occurs when you bring the pen tip within 10 mm (0.4 inch) of the tablet surface without touching the tablet and then press the upper or lower side switch.

Double-click on the pen tip to change the pen tip function. The tip must be set to CLICK in order to draw in most graphics applications.

At least one tool button should be set to the CLICK function.

You can change how the side switch operates for right clicks or other click functions. See [Using the side switch](#).

### Tips:

- Use a soft TIP FEEL for a wider range of pressure values in most pressure-sensitive applications.
- In some applications a soft pressure setting can make the pen overreact so that slight pressure on the pen will be magnified on the screen. If you experience this, try a firmer TIP FEEL setting.
- A large double-click distance may cause a delay at the beginning of brush strokes in some drawing applications. This may also cause a delay at the beginning of a drag action or inking stroke. If you notice such effects, try setting a smaller double-click distance and using the side switch to double-click. You can also set an ExpressKey to double-click.



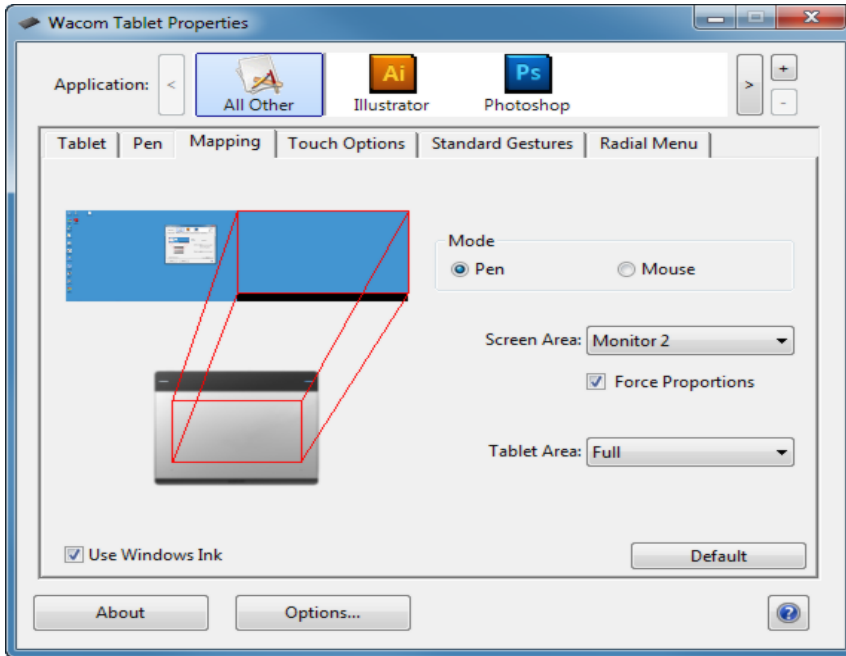




## TABLET TO SCREEN MAPPING

Select the MAPPING tab to define the relationship between tool movement on the tablet surface and cursor movement on the monitor screen.

By default the entire active area of the tablet maps to the entire monitor. If more than one monitor is in use, the tablet will map to all monitors.



MODE options control how the screen cursor moves.

- PEN MODE sets the cursor movement to correspond with the position of your pen on the tablet. Wherever you place your pen on the tablet, the cursor will jump to a corresponding point on the screen. This is known as absolute positioning and is the default setting for the pen.
- MOUSE MODE enables you to move the screen cursor with a “pick up and slide” motion similar to using a standard mouse.

SCREEN AREA: Select a [Portion of screen area](#) for tablet to screen mapping.

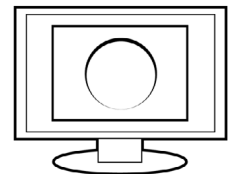
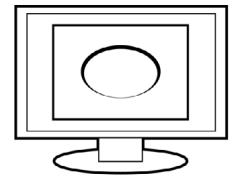
TABLET AREA: Select a [Portion of tablet area](#) for tablet to screen mapping.

The image dynamically updates to illustrate the selected mapping

When FORCE PROPORTIONS is unchecked, the correct scale or proportions are not maintained. The selected tablet area is mapped to the selected display area. Drawing a circle on the tablet may create an ellipse on the display screen. This is the default setting for all tools.

When FORCE PROPORTIONS is checked, the correct vertical and horizontal proportions are maintained. Drawing a circle on the tablet results in a circle on the display screen. Depending on your settings, some portions of the tablet active area may no longer be usable when this option is selected.

Note: Although Intuos is optimized for use with 16 10 aspect ratio displays, the default settings automatically adjust for use with other aspect ratio displays.





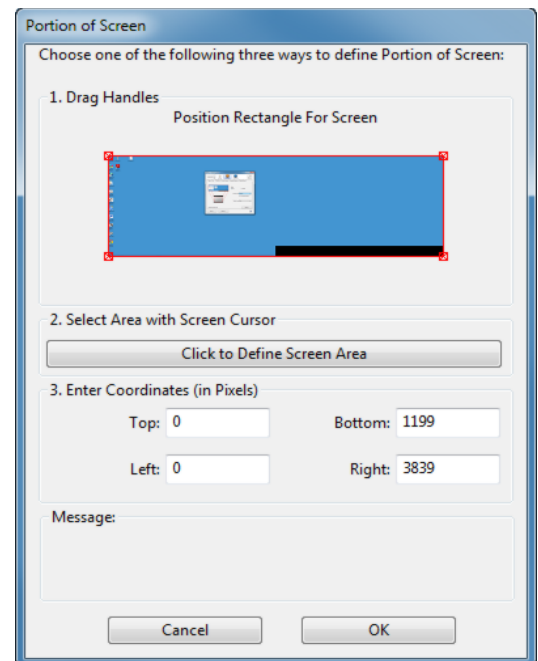
## PORTION OF SCREEN AREA

To define which portion of the display screen your tablet will map to, choose a SCREEN AREA option from the MAPPING tab.

FULL	Maps the entire monitor(s) area. This is the default setting.
MONITOR	Maps the entire area of a single monitor that you choose. If more than one monitor is connected to your system, an option will be available for each detected monitor.
PORTION...	In the dialog box that appears, choose a method for defining a portion of the display:

- Drag corners of the foreground graphic to select the screen area.
- Select the CLICK TO DEFINE SCREEN AREA button and move the screen cursor to select the screen area. Follow any MESSAGE prompts.
- Enter coordinate values.

After defining a portion of the screen, you may need to use a different input device to access other portions of the screen area.





## PORTION OF TABLET AREA

To define the tablet area that will be mapped to the screen area, in the MAPPING tab choose a TABLET AREA option.

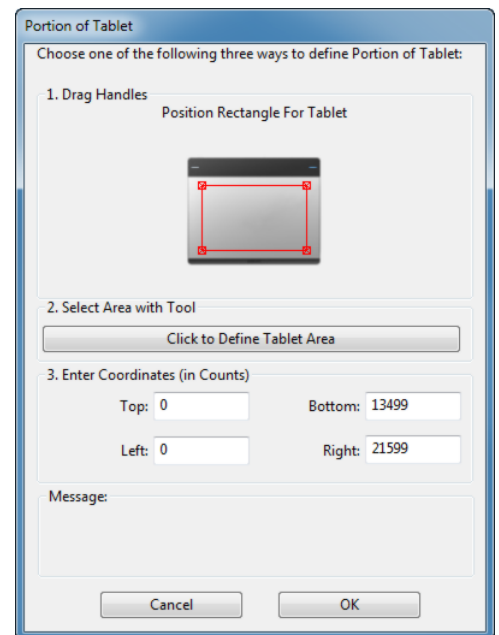
FULL

The entire active area of the tablet is mapped. This is the default setting.

PORTION...

In the dialog box that appears, choose a method for defining a portion of the tablet:

- Drag corners of the foreground graphic to select the tablet area that will be mapped to your selected screen area.
- Select the CLICK TO DEFINE TABLET AREA button and use your tool on the tablet to select the tablet area. Be sure to follow any MESSAGE prompts.
- Enter coordinate values.





## BUTTON FUNCTIONS

Customize Intuos for the way you like to work. Simply use the Wacom Tablet control panel to change the button function that is assigned to a tool button, ExpressKey or Radial Menu setting.

Button function options may vary, depending on your tablet model. Not all options are available for all controls or tablet models.

FUNCTION NAME	DESCRIPTION
CLICKS	
• CLICK	Simulates a primary mouse button click. Be sure at least one button performs this function so you can always navigate and click.
• RIGHT CLICK	Simulates a right mouse button click, which displays a context menu.
• MIDDLE CLICK	Simulates a middle mouse button click.
• DOUBLE CLICK	Simulates a double-click. For easier double-clicking, use this function instead of tapping twice with the pen tip.
• CLICK LOCK	Simulates holding down the primary mouse button. Press the tool button once to initiate click lock. Press the button again to release click lock. Click lock is useful for dragging objects or selecting blocks of text.
• 4TH CLICK	Simulates a 4th mouse button click.
• 5TH CLICK	Simulates a 5th mouse button click.



---

**FUNCTION NAME**                      **DESCRIPTION**

---

**KEYSTROKE...**                      Enables you to simulate keystrokes. Select this option to display the DEFINE KEYSTROKE dialog box.

Enter a keystroke or keystroke combination in the KEYS entry box. Keystroke combinations can include letters, numbers, function keys (such as F3) and modifier keys (such as SHIFT, ALT, or CTRL for Windows, or SHIFT, OPTION, COMMAND, and CONTROL for Mac). You can also choose special keystrokes or keystroke combinations from the ADD SPECIAL drop-down menu.

After defining a keystroke sequence, click OK.

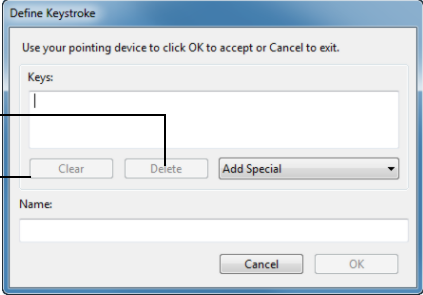
**Important: Because the ENTER (Windows) and RETURN (Mac) keys can be selected as a defined keystroke, they cannot be used to select OK. You must use your Intuos tool to click on the OK button.**

Enter a name for the keystroke definition. The name will be displayed with the respective control or in the Radial Menu, as applicable.

You can create different keystroke functions for different applications. See [Creating an application-specific setting](#).

Deletes only the last entry in the keystroke entry box.

Clears the keystroke entry box.



To learn which keystroke shortcuts are supported by a particular application, see the documentation that came with the application.

---

**FUNCTION NAME**                      **DESCRIPTION**

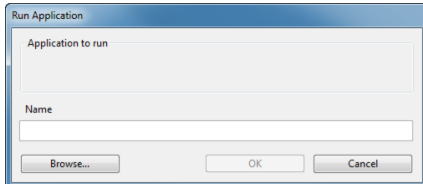
---

**SHOW DESKTOP**                      Minimizes all open windows to display a clean desktop.

**SWITCH APPLICATION**                      Brings up the application switching dialog box with focus on the next open application. On Windows 7 and Vista systems running Aero, Flip 3D will be activated with focus on the next open application.

**OPEN/RUN...**                      Opens a dialog box where you can select a specific application, file, or script to launch.

Click **BROWSE...** to locate an application, file, or script to launch. The selection you make appears in the **NAME** box. Click **OK** to accept the selection.



The dialog box will close and the **OPEN/RUN...** option you have selected will be assigned as your tool button option. Simply press the tool button to launch the assigned option.

If your selection is for the Radial Menu, it will be displayed there.



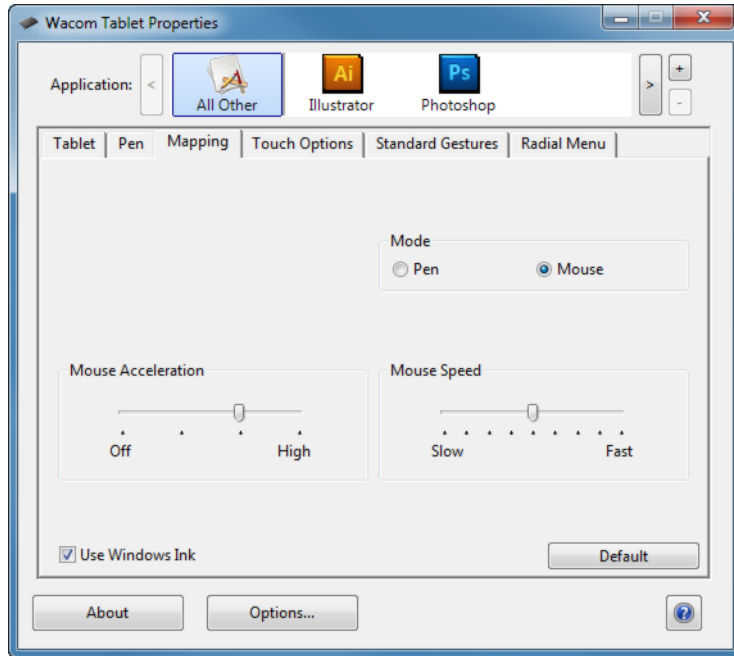
---

TOUCH ON/OFF	Available only for Intuos touch tablets. TOUCH ON/OFF is useful when you want to use only pen mode. Temporarily disable touch by moving the slider on the back of the tablet to the opposite position.
INK TOGGLE	(Mac only.) Toggles the “ink in any application” function of Ink on and off. Ink automatically recognizes and converts your handwriting into text and inserts it into a document. Handwriting recognition must be turned on for this function to work. See your Mac help for information on working with Ink.
EXPOSÉ	(Mac only.) Tiles all open windows. To access this option, first choose KEYSTROKE... and then click on the ADD SPECIAL menu within the dialog box.
PRESSURE HOLD	Locks the pressure at the current pressure level until the button is released. For example, you can paint with pressure sensitivity until you reach the brush size that you like. You can then press the button and continue painting with the same size brush until the button is released.

---



FUNCTION NAME	DESCRIPTION
DISPLAY TOGGLE	For multiple monitor systems. Enables you to toggle the current tablet mapping and screen cursor between different displays when you press an ExpressKey that has been assigned this function.
MODE TOGGLE...	Toggles between pen mode and mouse mode from the MAPPING tab. Click the MOUSE MODE button and adjust the mouse acceleration and speed.



Mouse mode settings can be accessed from a number of different locations within the control panel. However, only one MOUSE ACCELERATION and SPEED setting can be made for each application that you are customizing.

The mouse mode settings are independent of system settings. Changes you make to these settings in the Wacom Tablet control panel do not affect similar system settings. However, changes made to similar system settings may affect your Intuos tablet settings.

FUNCTION NAME	DESCRIPTION
ERASE	Sets a button so that when the button is pressed, the pen tip will act like the eraser in applications that support the ERASE function.
SETTINGS	Displays a diagram of the current ExpressKey settings on your monitor.



The display will fade out after two seconds on the screen.

To disable the display, choose the EXPRESSKEYS tab in the control panel and uncheck the SHOW EXPRESS VIEW box.

FUNCTION NAME	DESCRIPTION
TABLET PC	
<ul style="list-style-type: none"> <li>TABLET PC INPUT PANEL</li> <li>JOURNAL</li> <li>TABLET PC DEFINED</li> </ul>	<p>(Tablet PCs and Windows systems that support the Tablet PC Input Panel.) Opens the Tablet PC Input Panel when you press a tool button set to this function.</p> <p>(Windows 7 and Vista, and Tablet PC systems that include Microsoft Journal.) Opens Microsoft Journal.</p> <p>(Tablet PCs and Windows systems that support the Tablet PC Input Panel.) Sets the button function according to settings found in the Windows 8, Windows 7, and Vista TABLET PC SETTINGS and PEN AND INPUT DEVICES control panels.</p>
DISABLED	Disables the button function.
APPLICATION DEFINED	Reports only the button number to the application. This is for applications, such as CAD programs, that have built-in tablet support. This function may also be used by some highly integrated applications for direct control of the tablet ExpressKeys.
SKIP	Sets the toggle button to skip a function mode that has been assigned this option in the toggle sequence.
DEFAULT	Returns a button to its default setting.





## USING AND CUSTOMIZING THE RADIAL MENU

The Radial Menu is a pop-up menu that provides quick access to editing, navigation, media control functions, and more.

In the Wacom Tablet control panel, use the RADIAL MENU tab to customize the available Radial Menu functions.

Set a pen button or ExpressKey to the RADIAL MENU function. Press the button or ExpressKey to display the Radial Menu centered at the screen cursor position.

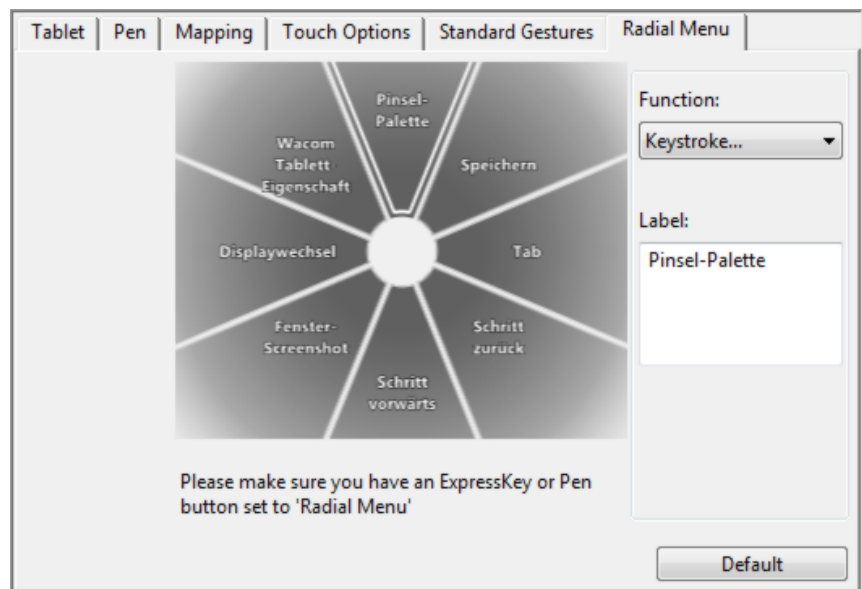
You can also use the appropriate touch gesture to open the Radial Menu.

The hierarchical Radial Menu appears in circular format.

1. Select a control slice.
2. Assign a control FUNCTION to the slice. If desired, change the LABEL name.
3. To close without making a selection, click on the 'X' located at the center of the Radial Menu or on a control slice that has no function assigned to it. You can also again press the button used to display the menu.
4. To make a selection without closing the Radial Menu, hold down the button that opens the menu.

### Tips:

- In the FUNCTION menu, choose SUBMENU to create custom submenus for a control slice.
- Press the ENTER (RETURN) key to add multiple lines of LABEL text.
- Click Default to return the current menu to its default values.



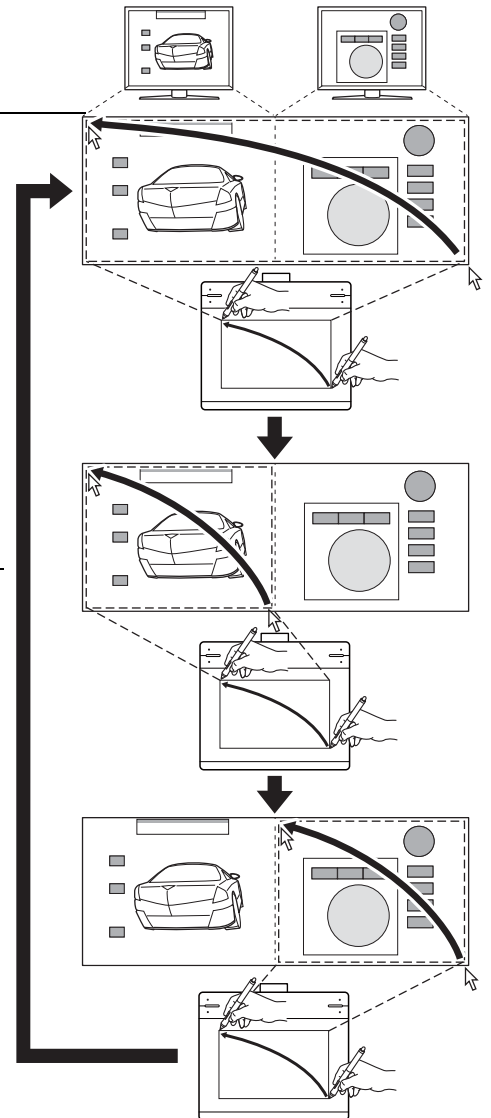
## WORKING WITH DISPLAY TOGGLE

Display Toggle is available when working on multiple monitor systems. This feature allows you to work with your tablet on all displays or on one display at a time. See [Working with multiple monitors](#).

After setting an ExpressKey or pen side switch to DISPLAY TOGGLE, you can press that button to sequentially toggle the current tablet mapping between a base mapping (the current setting from the [MAPPING](#) tab) and other monitors. For example:

1. The entire display area of a multi-monitor system is set up for extended mode and assigned to the active area of the Intuos tablet.

2. Pressing a tool button to which the DISPLAY TOGGLE function has been assigned toggles the tablet mapping to the next display in sequence.

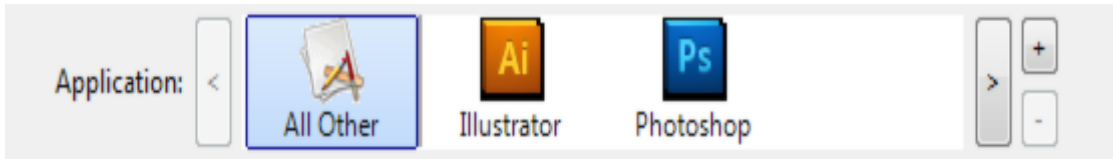




## CUSTOMIZING YOUR APPLICATION SETTINGS

The APPLICATION list enables you to add an individual application to the list and then customize settings for that application. For example, you may want to set a firm pen tip pressure setting in one application and a soft pressure setting in another.

- When no application-specific settings have been created, the ALL icon is displayed and the PEN will have the same settings in all applications.
- When application-specific settings are added, the ALL icon changes to ALL OTHER and an application icon is displayed for the newly added application(s).
- If you select an application icon and make changes to the PEN settings, your changes will apply to only that application.



When you create application-specific settings, you are creating a separate group of settings for the selected application. See the following sections for more details:

[Creating an application-specific setting](#)

[Changing application-specific settings](#)

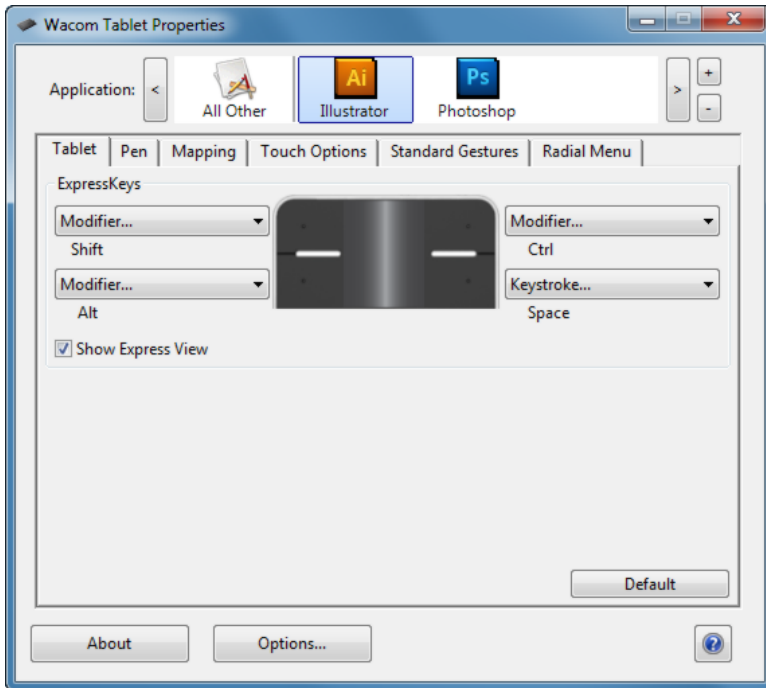
[Removing application-specific settings](#)

**Tip:** To review the ExpressKeys or pen settings for the front-most application, set an ExpressKey to [SETTINGS](#) and press the key at any time.



## CREATING AN APPLICATION-SPECIFIC SETTING

Choose the application for which you want to create a specific setting.



Click on the APPLICATION list [ + ] button.

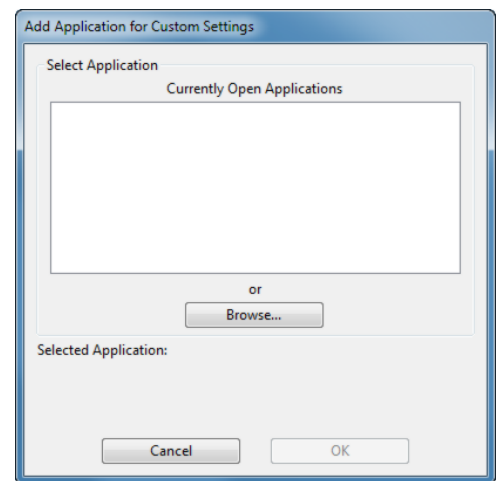
Choose a method to select an application:

- In the CURRENTLY OPEN APPLICATIONS box, select an application for which to create custom settings.
- BROWSE to select the executable file of any application installed on your computer.

The name of your selected application is displayed.

Click OK to complete the process.

Note: If two programs have the same executable file name, they will share the same customized settings.



After adding an application, its icon appears in the APPLICATION list. You can use the Wacom Tablet control panel to customize settings for the application.

Once you have created application-specific settings, applications that have not been customized in this manner will use the settings for ALL OTHER.



## CHANGING APPLICATION-SPECIFIC SETTINGS

To change settings for a specific application, select the application. Then customize the tab settings.

## REMOVING APPLICATION-SPECIFIC SETTINGS

To remove an application-specific setting:

1. In the APPLICATION list, select the application you want to remove from the list.
2. Click on the APPLICATION list [ - ] button. In the dialog box that appears, click DELETE to confirm your selection. The selected application is removed from the list. You can restore the application to the tablet by clicking on the [ + ] to add it back to the list.

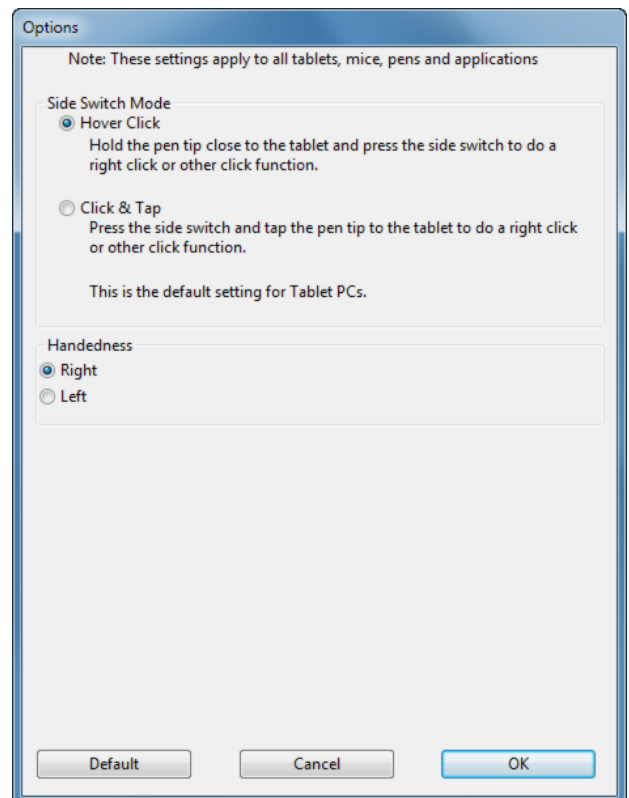
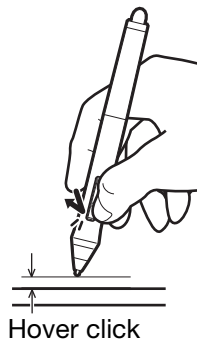
## OPTIONS

Click the Wacom Tablet control panel OPTIONS... button to access the OPTIONS dialog box.

You can change the SIDE SWITCH MODE to best fit the way you like to use the pen when making right-clicks or other click functions.

Select:

- HOVER CLICK to perform click functions without touching the pen tip to the tablet surface. This is the default setting for all except Tablet PCs.
- CLICK & TAP to enable the precise placement of click functions. When selected, you must first press the side switch then touch the pen tip to the tablet surface in order to perform the function.



- MOUSE HANDEDNESS options change the button orientation of a mouse for right- or left-handed use.





## MANAGING PREFERENCES

Use the Wacom tablet preferences utility to manage your tablet preferences for single or multiple users.

**Windows 8:** From the Windows 8 Start screen, click the WACOM TABLET PREFERENCE FILE UTILITY tile. If you are using the Windows 8 Classic Desktop, press the Windows key on your keyboard, or select the Windows icon in the Charms bar, to access the Start screen.

**Windows 7 and Vista:**

1. Click the START icon and select ALL PROGRAMS.
2. Select WACOM and WACOM TABLET PREFERENCE FILE UTILITY.

Set your preferences in all Windows systems as follows:

- To remove preferences for the current user, click REMOVE under MY PREFERENCES.
- To delete preferences for multiple users, click REMOVE under ALL USER PREFERENCES. Administrator rights are required to delete preferences for all users. Relaunch any currently open tablet-aware applications that you may be running.
- To back up your preferences, click BACKUP... under MY PREFERENCES.
- To restore preferences that you had previously backed up, click RESTORE... under MY PREFERENCES.
- Carefully follow any prompts that may appear.

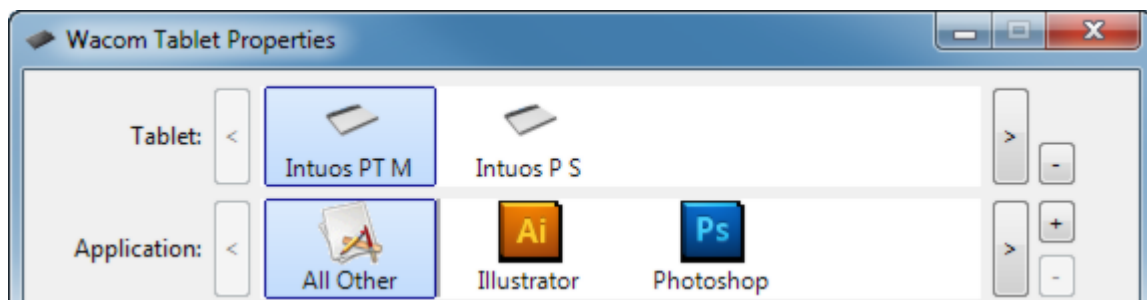
**Mac:** Open the main APPLICATIONS folder. Then open the WACOM TABLET folder and run the WACOM TABLET UTILITY.

- To remove preferences, select CURRENT USER or ALL USERS. Then click REMOVE. Log out, then log back in. When the software driver loads it will create a new preferences file with the factory defaults.
- To back up your preferences, select CURRENT USER or ALL USERS. Then click BACKUP....
- To restore preferences that you had previously backed up, select CURRENT USER or ALL USERS. Then click RESTORE....
- Follow any prompts that may appear.

## INSTALLING MULTIPLE TABLETS

If you connect another tablet, such as a Cintiq, to your computer, it will appear as an icon in the Wacom Tablet control panel TABLET list. If the new tablet is selected, tools associated with the tablet will appear in the TOOLS list.

To work with any connected tablet, select it from the TABLET list and then customize your settings.





## GOING WIRELESS WITH INTUOS

Intuos tablets are designed to let you go wireless by adding the Wacom wireless accessory kit.

See [Ordering parts and accessories](#).

[Wireless accessory components](#)

[Wireless setup](#)

[Wireless module removal](#)

[Battery life information](#)

[Battery replacement](#)

[Wireless module removal](#)

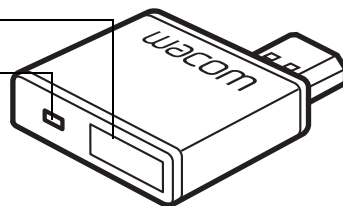
[Wireless receiver storage](#)

### WIRELESS ACCESSORY COMPONENTS

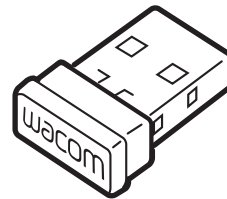
The Wacom wireless accessory kit includes the following components:

Power button

Battery status LED

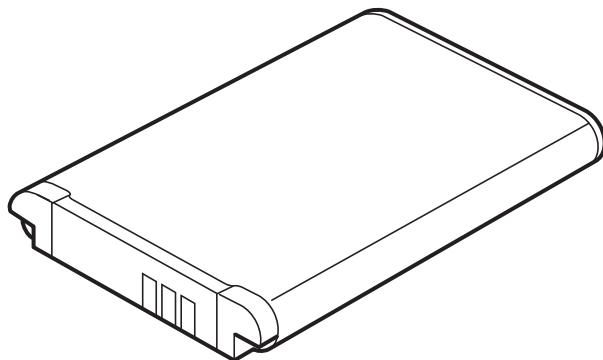


Wacom wireless module plugs into Intuos tablet.



Wacom wireless receiver plugs into computer

When not in use, can be stored within the Intuos tablet. See [Wireless receiver storage](#).



Rechargeable battery, Lithium-Ion (Li-Ion) installs in the Intuos tablet.



**Warning:** See the Important Product Information document for safety precautions. Located on the Intuos installation CD.

Note: The wireless module and receiver are factory paired. If either item is lost or broken, you will need to purchase a new wireless accessory kit. The battery can be purchased separately.

To install the kit, see [Wireless setup](#).



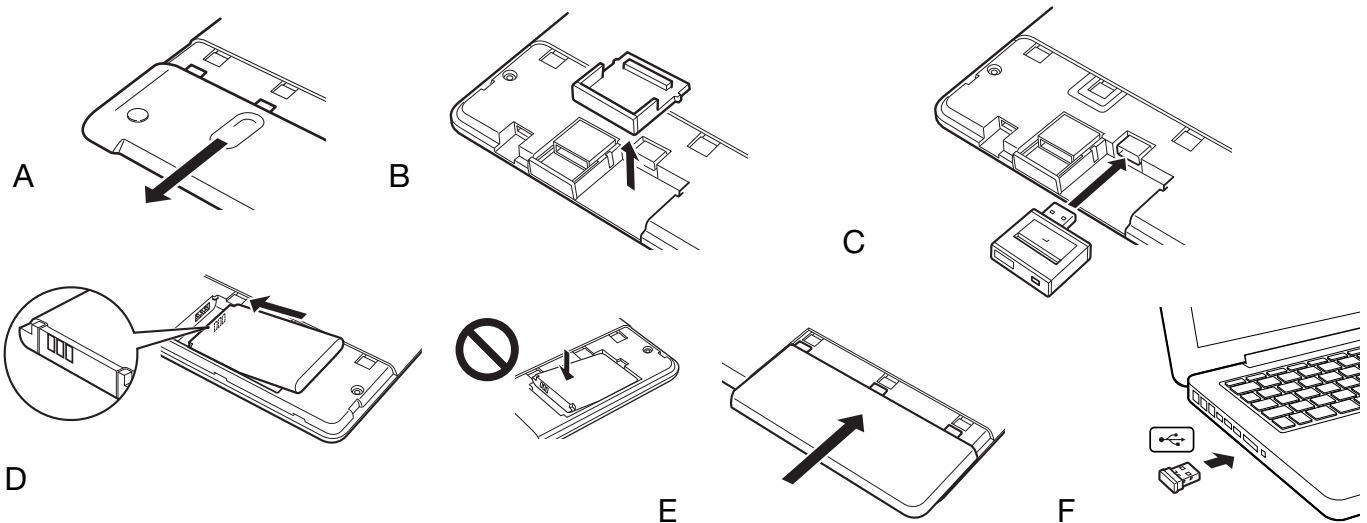


## WIRELESS SETUP

Configure Intuos for wireless operation.

1. If you have been using Intuos as a wired tablet, disconnect the USB cable.
2. Turn the tablet over. The wireless compartment is on the left, and the battery compartment is on the right.
3. Remove the wireless compartment cover (A) and the wireless module spacer (B).  
**Important: Save the module spacer. You may want to use it as a tool for removal of the wireless module. See [Wireless module removal](#).**
4. Install the wireless module and receiver components (C). Make sure the connector is fully seated.
5. Replace the wireless compartment cover.
6. Remove the cover from the battery compartment.
7. Install the battery by aligning the contacts as shown (D) and pressing the battery into place.  
Note: Do not press straight down on the battery to install it. Align the contacts and press that end of the battery into place before pressing down the other end.
8. Connect the Wacom wireless receiver to an active USB port on your computer or USB hub (F).
9. If you have not already done so, turn on your computer and wait until it is ready to use.

Continue for instructions on how to connect wirelessly.



[Establishing a wireless connection](#)

[Optimizing the wireless connection](#)







## ESTABLISHING A WIRELESS CONNECTION

Connect wirelessly with Intuos.

1. Fully charge the tablet battery. See [Charging the battery](#). When the battery is fully charged as shown by the green LED, you can disconnect the USB cable and work wirelessly.

### Battery status LED

- Amber when USB cable is connected and battery is charging.
- Green when USB cable is connected and battery is fully charged.
- Off when using tablet wirelessly.

### Power button

- Push to connect, or wake from sleep mode.
- Push to turn off.



2. Press the power button on the Wacom wireless module. A wireless connection should be established within 4 seconds. If not, the wireless module will turn off. If this should occur, see [Wireless connection problems](#).
3. Check the connection by using the pen on the tablet to move the screen cursor. See also [Battery and wireless connection status](#).

Intuos can operate wirelessly or in USB mode, but not both at the same time.

- Wireless mode is activated when Intuos is properly configured for wireless operation and the USB cable is disconnected. When the USB cable is disconnected, the tablet searches and connects to the wireless receiver within 4 seconds. If the receiver is not found then the tablet enters sleep mode.
- USB connection deactivates wireless mode, and activates USB mode.

### Notes:

The wireless module and Wacom wireless receiver are factory paired and work together as a discrete set. Pairing is not required.

Intuos can operate wirelessly for up to 10 meters (33 feet) away from your computer. It is not necessary for Intuos to be “in sight” of the wireless receiver. The wireless module uses radio-frequency technology, which can pass through non-metallic objects like desks.


Interference from other devices (especially audio devices) or metallic objects located in or along the line of sight can negatively impact the tablet performance and operating distance. If you experience connection problems, see [Optimizing the wireless connection](#).


When starting up your computer, wait until your operating system has completely loaded and then turn on the wireless module (if not already on) to begin working wirelessly.


**Important: The use of wireless devices is regulated in most countries. If Intuos is configured for wireless operation and you will be traveling, check with the appropriate regulatory authority for any restrictions that may apply to your product in the countries that you visit.**





 Products using wireless signals may interfere with the equipment on commercial aircraft, and regulations require that all wireless devices be turned off when traveling in an airplane. Turn off the Intuos tablet wireless signal by turning off or removing the wireless module (the Status LED will be off) and DO NOT power on the wireless module during takeoff, transit, or landing.

 Do not use Intuos wirelessly in a facility control system or any other environment that requires extremely high reliability, or where the use of a wireless device may cause interference. Wireless operation may interfere with or cause other electronic devices to malfunction, or other wireless devices may interfere with or cause the tablet to malfunction. Where use of wireless products is prohibited, power off or remove the wireless module (ensuring the wireless signal has been turned off) to prevent the possibility of it interfering with or causing other electronic devices to malfunction. Wacom does not accept any liability for direct or consequential damages. For details, please refer to your Warranty, located within the Important Product Information document.

 Power off your tablet in locations where/when electronic devices are not allowed. Because the tablet may cause other electronic devices to malfunction in some locations where/when the use of electronic devices is not allowed, such as within an airplane, be sure to turn off the tablet by unplugging the USB connector from your computer.

## OPTIMIZING THE WIRELESS CONNECTION

If your screen cursor lags behind the pen movement on the tablet or frequently “jumps” about, or if you see excessive straight line segments when drawing in graphics applications, your wireless connection may not be able to transmit all of the data from the tablet with the necessary speed. This may be caused by interference from other radio sources, obstructions in the radio wave path, excessive distance from the computer, or a combination of the above.

To improve the wireless connection and optimize tablet performance:

- Remove any metallic objects that may be in the line of sight between Intuos and the Wacom wireless receiver attached to your computer.
- Try connecting the wireless receiver to a USB extension cable, and place it on your desktop or somewhere in sight of Intuos.
- Move the tablet closer to your computer.
- Switch off any other devices operating in the 2.4 GHz radio spectrum, such as mobile telephones, etc., or move their antennas further away from your computer.





## WIRELESS MODULE REMOVAL

To remove the wireless module:

1. Remove the wireless compartment cover.
2. Use the spacer that came with the Intuos, your thumbnail, or a suitable, non-metallic tool to unseat the module. To use the spacer, place it over the module and use it as a hook to unseat and slide the module out of the tablet.
3. Place the spacer back into the wireless module slot.
4. Slide the wireless compartment cover into place.
5. Store the wireless module in a safe place after removal.

## BATTERY AND POWER MANAGEMENT

This section contains important information about the rechargeable battery and power management features of your Intuos tablet when used wirelessly. Be sure to review the following sections.

[Charging the battery](#)

[Battery and wireless connection status](#)

[Power saving features](#)

## CHARGING THE BATTERY

Fully charge the tablet battery before using Intuos for the first time in wireless mode.

Connect the USB cable between Intuos and a primary USB port located directly on your computer, or to a powered USB hub.

- The battery charges whenever the cable is connected and the battery is not fully charged.
- For everyday use, you can charge your battery in approximately 4 hours. To fully charge an empty battery it takes approximately 6 hours. Actual charge time depends upon battery level and tablet use while charging.
- USB connection deactivates wireless mode.

### Important:

- When charging the battery, always connect the USB cable directly to your computer or to a powered USB hub. A non-powered hub may not provide enough current to charge the battery, which may affect overall tablet operation.
- When your tablet is not connected to your computer via USB cable, you can charge the battery using a standard wall adapter with 5V output voltage. Quick charging will not work during this process.

For more information, check the product information on the Wacom web site for your region.



**Warning:** See the Important Product Information document for safety precautions.

### Tips:

- When charging, be sure that both the battery and the Wacom wireless module are installed in the tablet.
- To check the battery charge status, open the Wacom Tablet control panel, click FUNCTIONS, and select the WIRELESS tab. See [Battery and wireless connection status](#).
- Make the most of your wireless time. See [Power saving features](#) and [Battery life information](#).





## BATTERY AND WIRELESS CONNECTION STATUS

When in wireless mode, Intuos provides you with additional feedback about your tablet.

- The Status LED shows the following:

Flashing	Wireless mode connecting.
On	Wireless mode on.
Off	Sleep mode, or wireless mode off.

- On the Wacom wireless module, the battery status LED shows the following:

Amber	USB cable connected and tablet battery charging.
Green	USB cable connected and tablet battery fully charged.
Off	USB cable connected, tablet is in USB suspend mode or USB connecting state. USB cable disconnected, no charging activity. USB cable disconnected, operating wirelessly.

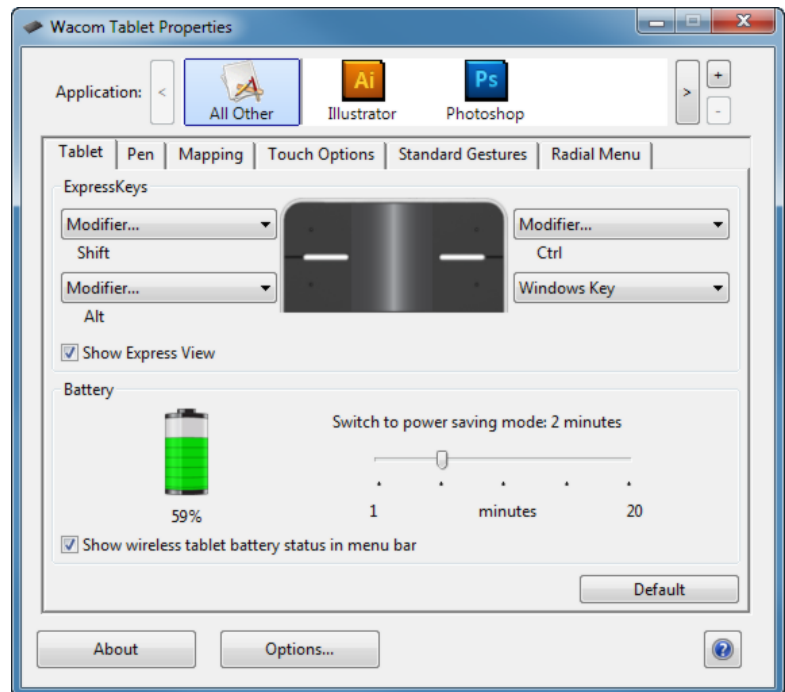
- A battery status icon appears in the system task bar (Windows) or menu bar (Mac). Hover the screen cursor over the icon to see specific details.
- When configured for wireless operation, you can view the tablet battery status and wireless control options using the Wacom Tablet control panel. Open the control panel, click FUNCTIONS and select the WIRELESS tab.

The battery status icon indicates the tablet is in use, and shows an approximation of the battery charge remaining.

- Adjust the slider to determine when your tablet will switch to power-saving mode.
- A power plug symbol indicates the tablet is running on external power through the USB cable, and the tablet battery is charging.
- An alert symbol indicates battery charge is below 20%.
- Click the checkbox to show the battery status in your menu bar.

The feedback may vary, depending on the actual status of your tablet and operating system.

See also [Power saving features](#).





## POWER SAVING FEATURES

When configured for wireless operation, Intuos uses a number of power saving features to conserve the tablet battery charge and improve performance.

**Power saving mode** Tablet enters power saving mode after 2 minutes of no user input. The time parameter can be adjusted in the Wacom Tablet control panel. See [Battery and wireless connection status](#).  
Depending on your tablet model, wake from power saving mode by touching the tablet, pressing an ExpressKey, or placing the pen in proximity.

---

**Sleep mode** Tablet enters sleep mode:

- When there is no wireless connection for more than 4 seconds. For example, you switch off the computer, move the tablet out of range, or unplug the wireless receiver. To resume operations, correct any problem and ensure the tablet is within range of your computer. Then press the power button on the Wacom wireless module. See [Testing your tablet](#).
- After 30 minutes of no user input.
- When the battery level is extremely low. Recharge the battery immediately.

To wake from sleep mode, press the power button on the wireless module. Depending on your tablet model, touch the tablet surface with your finger or the pen. Then move your finger or pen along the tablet to fully activate Intuos.

**Important:** Conserve battery power by turning off the wireless module when you are not using the tablet. Push the power button on the wireless module to turn it off. Otherwise, the tablet battery may need charging before you can again use the tablet wirelessly. See [Battery life information](#).





## BATTERY LIFE INFORMATION

When using your Intuos wirelessly, the battery life will vary depending upon usage and your tablet model. For example, you can expect a full day of working charge when using small- and medium-sized tablet models. If you have a large Intuos tablet model, expect a half day of battery charge due to its large size. Wacom recommends purchasing an extra battery. See [Ordering parts and accessories](#).

- All batteries age over time and gradually lose their ability to hold a charge. The typical life span of a Li-Ion battery is two to three years, whether it is used or not. The life and performance of a Li-Ion battery is not improved by cycling (discharging and recharging).
- Always charge the battery whenever the low battery warning appears on your display screen. See also [Power saving features](#).
- The tablet draws current from the battery whenever the Wacom wireless module is on. To reduce power drain, the tablet will enter sleep mode whenever the battery level is very low. The battery must be recharged.

A small amount of current is drawn even in sleep mode, and will slowly discharge the battery. It is a good idea to charge the battery and turn the wireless module off before leaving the tablet unused for a number of days.

- Once the battery voltage has fallen below a minimum safety level, an internal protection circuit within the battery prevents any charging.

If a battery with a low charge remains in the tablet for an extended period of time, the small trickle of current used by the tablet may discharge the battery so far that the internal protection circuit is activated. If this occurs, you can no longer charge the battery. When leaving the tablet unused for an extended period of time, preserve the battery by removing it from the tablet.

You cannot recharge a Li-Ion battery that has been over-discharged.

- For extended battery storage (a month or longer), keeping the battery in a partially (not fully) charged state, along with cool storage, can slow the aging process. The recommended charge level is approximately 40% for optimum battery recharge when placed back into service. If storing both tablet and battery, you do not need to remove the battery. However, it is always good practice to remove the battery when storing the tablet.

Note that you may not be able to recharge the battery after six continuous months of non-use.

You will need to purchase a new battery when it is no longer capable of holding an adequate charge or can no longer be charged. See [Ordering parts and accessories](#).



**Warning:** See the Important Product Information document for battery safety precautions.





## BATTERY REPLACEMENT

If your tablet battery has exceeded its life span and can no longer be charged or no longer holds a charge, it will need to be replaced. Be sure to use only the rechargeable battery designed for your tablet. For information, see [Ordering parts and accessories](#).

**Important:** Only use a Wacom battery specified for your tablet.

To replace the rechargeable battery:

1. Turn the tablet over. Remove the battery compartment cover. Slide the cover away from the tablet body to remove.
2. Carefully remove the old battery. Be sure to lift the back edge of the battery before removing the contact end and lifting the battery out of the compartment.
3. Install the new battery. Align the terminals of the new battery with the tablet contacts. Press the battery into the compartment. See illustrations for [Wireless setup](#).

Note: Do not press straight down on the battery to install it. Align the contacts and press that end of the battery into place before pressing down the other end.

4. Replace the battery compartment cover. Align and slide into place.
5. Connect the USB cable and charge the battery for optimum performance. See [Charging the battery](#).

**Important:** When replacing the battery, be careful not to drop it on hard surfaces. The battery can be damaged internally when dropped, and should be replaced even if there is no obvious damage. This will help prevent any future damage that could occur to the tablet if the battery has been dropped, is installed in the tablet, and then later develops a short or leak while in the tablet.



**Warning:** See the Important Product Information document for battery safety precautions.

Many communities offer voluntary or mandatory recycling programs for batteries. Properly recycle the old battery by following all applicable laws, and in accordance with the safety precautions for Lithium-Ion batteries as described in the Important Product Information document. Keep batteries out of the reach of children. Promptly recycle old batteries.





## WIRELESS RECEIVER STORAGE

The Wacom wireless receiver is designed for portability. Plug it into a USB port on your computer. Leave it there so the receiver will always be available for use with your tablet, even when you are traveling.

The wireless receiver can also be stored within your Intuos tablet. To store the receiver in the tablet:

1. Use your fingernail or a suitable, non-metallic tool to open the wireless receiver storage compartment.
2. Slide the wireless receiver spacer partially out of the tablet body.
3. Insert the receiver into the spacer.
4. Slide the spacer fully back into the tablet body and close the receiver storage door.

## TESTING THE WIRELESS CONNECTION

The Status LED should glow whenever the tablet is properly connected and your computer has recognized it as a USB device. If you encounter problems with the wireless connection, perform the following checks.

1. First check the general [Troubleshooting](#) procedures.
2. Verify that the wireless module is on. See [Battery and wireless connection status](#).
3. Verify that the wireless module and receiver are properly installed. See [Wireless setup](#).
4. Check the battery power. See [Battery and wireless connection status](#). If the battery charge is low, connect the USB cable and charge the battery. See [Charging the battery](#).
5. Switch the wireless module off, and then back on.
6. Move the tablet closer to the computer. Make sure there are no metal or other high density obstructions in the line of sight between the tablet and computer.
7. Open the Wacom Tablet control panel and click on the ABOUT button. In the dialog box that appears, click DIAGNOSE.... The DIAGNOSTICS dialog box shows dynamic information about the tablet. Check the WIRELESS MODE entry to determine if the wireless status is ON. When you are done, click the CLOSE button to exit the dialog box.

If these tests fail, you may have defective hardware. See [Technical support options](#).







## TROUBLESHOOTING

If you are having trouble, Wacom recommends you do the following:

1. If the tablet driver failed to load properly, first perform the recommended action in any error message that may appear. If that does not solve the problem, review the troubleshooting procedures in this chapter.
2. Look in the [Troubleshooting tables](#). Your problem may be described there and you can try the solution offered.
3. Visit [www.wacom.com](http://www.wacom.com) and choose the Wacom web site for your region where you can check the product FAQs (Frequently Asked Questions).
4. If you are having a compatibility conflict between Intuos and a new hardware or software product, see [Obtaining software updates](#) for information on downloading an updated software driver. Wacom periodically updates the software driver to maintain compatibility with new products.
5. Test your tablet and Intuos tools. See [Testing your tablet](#) and [Testing the tablet controls and tools](#).
6. If you have tried the suggestions in this manual and still cannot resolve the problem, then contact Wacom for Technical Support. See [Technical support options](#) and the Read Me file for information on where to obtain support for your region.

[Testing your tablet](#)

[Testing the tablet controls and tools](#)

[Troubleshooting tables](#)

[Technical support options](#)

[Obtaining software updates](#)





## TESTING YOUR TABLET

1. Turn on your computer and wait until the system has fully loaded.
2. Check the USB connection. The Status LED should glow whenever the tablet is properly connected and your computer has registered it as a USB device. If not:
  - Make sure the tablet USB cable is securely connected to an active USB port on your computer.
  - Check the tablet USB cable for damage.
  - If you are connecting the tablet to a USB hub (or hub device such as a keyboard with USB ports), be sure the USB hub is properly connected to your computer and is active.
  - If the Status LED does not illuminate after your computer is on and has finished booting up, your USB port may be disabled. Verify that you have connected the tablet to an active USB port.
  - Connect the tablet to a different USB port or try connecting to the USB port on another computer.
  - For best results when troubleshooting no power to the tablet (the status LED does not light), plug the tablet directly into the system USB port located on your computer, not on a hub. Temporarily eliminate any external hubs in use until you determine that the system recognizes the tablet and that it is functional. When the tablet is working properly, try moving the tablet to the USB hub if you want to use it.
3. For [wireless operation](#), check the tablet connection. The Status LED should glow whenever the tablet is properly connected and your computer has registered it as a USB device. If not:
  - Verify that the wireless module is on. See [Battery and wireless connection status](#).
  - Verify that the wireless module and receiver are properly installed. See [Wireless setup](#).
  - Check the battery power. See [Battery and wireless connection status](#). If the battery charge is low, connect the USB cable and charge the battery. See [Charging the battery](#).
  - Switch the wireless module off, and then back on.
  - Move the tablet closer to the computer. Make sure there are no metal or other high density obstructions in the line of sight between the tablet and computer.





4. Check the pen. If the tablet driver does not load properly, the pen will not work properly. (You will be able to use the pen tip to move the screen cursor and click, but there will be no other pen functionality.) Install the tablet driver software.

- Move your pen across the tablet active area. The screen cursor should move in the corresponding direction on your monitor or display screen.
- Press the pen tip against the surface of the tablet. The status LED should brighten.
- Next, without applying pressure to the pen tip, hold the pen tip within approximately 10 mm (0.4 inch) of the tablet surface and press the side switch. The LED should again brighten.
- Turn the pen over and press the eraser against the surface of the tablet. The LED should brighten.

See also [Testing the tablet controls and tools](#) and [Testing a pen](#).

5. Check touch. Attempt to move the screen cursor by tracking your finger across the tablet surface. Then tap to select an item. The status LED should brighten when you touch the active area of the tablet.

If the tablet driver does not load properly, basic touch movement will be recognized but other actions and gestures will not. If gestures are not recognized, install the tablet driver software.

6. Check the ExpressKeys. See [Testing the tablet controls and tools](#) and [testing the ExpressKeys](#).

If any of these tests fail, you may have defective hardware. See [Technical support options](#).

After testing, use the Wacom Tablet control panel to reconfigure your tablet and tools for any custom settings you may originally have been using.

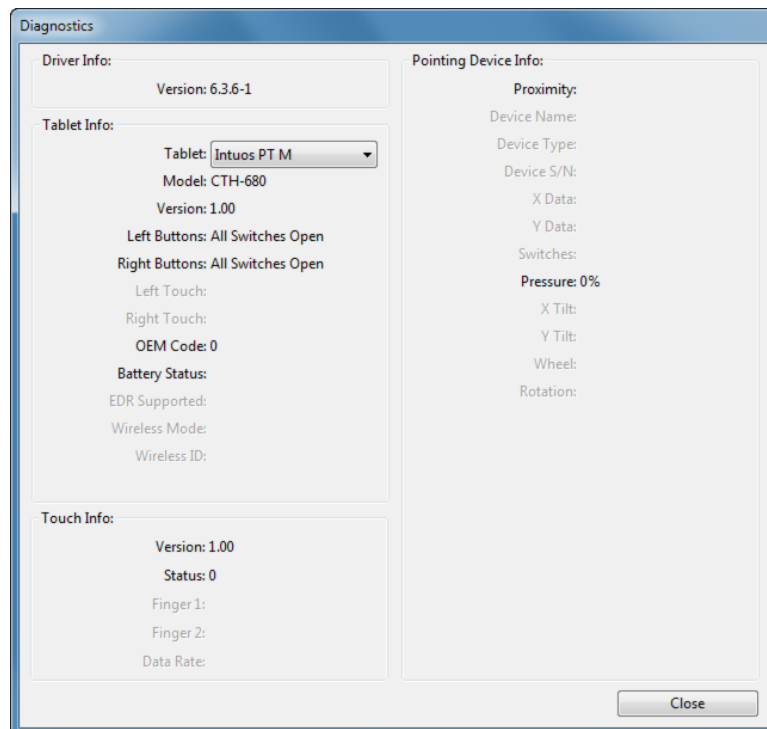




## TESTING THE TABLET CONTROLS AND TOOLS

If your Intuos tools or tablet controls do not work as you expect, it is a good idea to first check the assigned functions or reset them to their default conditions. You will also want to do this if you have a touch-sensitive tablet model and encounter problems with touch.

- Open the Wacom Tablet control panel and click on the ABOUT button. In the dialog box that appears, click DIAGNOSE.... The DIAGNOSTICS dialog box shows dynamic information about the tablet, your tool(s), and appropriate information for touch-sensitive tablets.



- If more than one tablet is connected to your system, in the TABLET INFO column select the unit for which you are testing.
- Use the information shown in the DIAGNOSTICS dialog box when testing your tablet and tools.

Note: If a tool button is set to RADIAL MENU or OPEN/RUN..., that function will occur when the button is pressed. In this case you may want to change the button function before testing.

[Testing the ExpressKeys](#)

[Testing a pen](#)





## TESTING THE EXPRESSKEYS

1. With the DIAGNOSTICS dialog box open, observe the TABLET INFO column as you test each ExpressKey. Be sure to select the tablet unit you are testing from the TABLET INFO column.
2. Test the keys by pressing them one at a time. Each time you press a key, its number is shown next to the LEFT BUTTONS category.
3. When you are done, click the CLOSE button to exit the dialog box.

**Important:** Some applications can override and control the ExpressKey functions. Consider closing any open applications except the Wacom Tablet control panel when testing the ExpressKeys. For details, see [Using applications integrated for tablet control](#).

## TESTING A PEN

1. With the DIAGNOSTICS dialog box open, and while observing the POINTING DEVICE INFO column, bring your pen within 10 mm (0.4 inch) of the tablet active area. A value for PROXIMITY, the DEVICE NAME, DEVICE TYPE, and a DEVICE S/N (serial number) should be displayed.
2. Move your tool along the tablet surface. The X and Y DATA values should change to reflect the tool position.
3. Test your pen switches. The Status LED should brighten each time you click with the tip, press the side switch, or press the eraser to the tablet.
  - Click on the tablet surface with the tip. The SWITCHES state and PRESSURE value should change. PRESSURE should change from approximately 0% with no pressure applied to approximately 100% when full pressure is applied.
  - Next, press the side switch without pressing the tip to the tablet. The SWITCHES state should change. For the Intuos pen, do this for both positions of the side switch.

Pen	Tip = 1
SWITCHES states	Side switch (lower position) = 2
	Side switch (upper position) = 3
	Eraser = 1
  - Press the eraser to the tablet. The SWITCHES state and PRESSURE value should change. PRESSURE should change from approximately 0% with no pressure applied to approximately 100% when full pressure is applied.
4. Slowly rotate the pen on its axis. The ROTATION value should change as you rotate the pen.
5. When you are done, click on the CLOSE button to exit the dialog box.





## TROUBLESHOOTING TABLES

If you encounter problems with your Intuos tools or tablet, see the following tables. Your problem may be described here, and you can try the solution offered. Check the tablet Read Me file for the latest information updates.

For additional information, visit the Wacom web site at <http://www.wacom.com>.

[General problems](#)

[Pen problems](#)

[Touch problems](#)

[Wireless connection problems](#)

[Windows-specific problems](#)

[Mac-specific problems](#)

### GENERAL PROBLEMS

The computer does not have an available USB port.	Check if there is an available USB port on a USB hub. If not available you will need to add a USB hub or USB card.
The status LED does not illuminate.	<p>Verify that the tablet USB cable is properly connected to the tablet and to an active USB port.</p> <p>If connecting to a USB hub device, make sure the hub is connected to an active USB port and that the hub is active.</p> <p>Try connecting to another USB port or using another USB cable.</p> <p>If using Intuos in wireless mode, see also <a href="#">Wireless connection problems</a>.</p>
The computer does not go to sleep.	<p>When you are not using your Intuos tool(s), remove them from the tablet surface or the tablet will continue to send data, keeping the computer awake.</p> <p>Note: Because some metallic or other conducting objects can also cause the tablet to send data, it is best to keep the tablet surface clear of all objects when not in use.</p>
The screen cursor is very erratic or “jumps” around when using the tablet.	On rare occasions the tablet may receive interfering radio frequencies from a computer monitor or nearby AM radio station. If you notice interference from a monitor, try moving the tablet at least six inches away from the monitor, or change the monitor refresh rate or monitor resolution.
When working in some applications, the ExpressKeys perform a different function than what is set in the Wacom Tablet control panel.	<p>Some applications can override and control the ExpressKeys functions. See <a href="#">Using applications integrated for tablet control</a>.</p> <p>If using application-specific settings, be sure you have updated the settings for the application you are working with.</p>





## PEN PROBLEMS

The pen does not position the screen cursor, or otherwise work properly.

If the tablet driver does not load properly, pen input will not be available.

- You will be able to use the pen tip to move the screen cursor and click, but there will be no other pen functionality.
- For tablet models that combine pen input and touch, basic touch movement will continue to be recognized but other actions and gestures will not.

Install the driver software for the tablet.

The pen does not draw or ink with pressure sensitivity.

Some applications require that you turn on the pressure capabilities within the application or the selected tool before the pen will respond as a pressure-sensitive tool.

Verify also that your application supports pressure sensitivity.

Clicking is difficult.

Try using a lighter TIP FEEL. See [Adjusting tip feel and double-click](#).

Double-clicking is difficult.

Be sure you are quickly tapping the tablet twice in the same place on the tablet active area. Wacom recommends using the side switch to double-click.

Open the Wacom Tablet control panel and go to the PEN tab.

Try increasing the TIP DOUBLE CLICK DISTANCE or using a lighter TIP FEEL.

Set an ExpressKey to DOUBLE CLICK and use it to issue double-clicks.

Windows: Try setting your system to launch programs with a single click.

The pen selects everything, or will not stop drawing.

Open the Wacom Tablet control panel and go to the PEN tab. Move the TIP FEEL slider toward FIRM, or select CUSTOMIZE... and increase the CLICK THRESHOLD setting. If this does not help, see [Testing the tablet controls and tools](#).

The pen nib may be worn. See [Replacing the pen nib](#).

The eraser selects everything or will not stop erasing.

Open the Wacom Tablet control panel and go to the ERASER tab.

Move the ERASER FEEL slider toward FIRM, or select CUSTOMIZE... and increase the CLICK THRESHOLD setting. If this does not help, see [Testing the tablet controls and tools](#).

You notice a screen delay at the beginning of pen or inking strokes.

Open the Wacom Tablet control panel and go to the PEN tab and decrease the TIP DOUBLE CLICK DISTANCE. If that does not work, move the TIP DOUBLE CLICK DISTANCE slider to the OFF position in order to turn off double-click assist.

Try turning off the operating system inking features.

You have to press hard with the pen when clicking, drawing, or writing.

Open the Wacom Tablet control panel and go to the PEN tab. Move the TIP FEEL slider toward SOFT, or select CUSTOMIZE... and decrease the SENSITIVITY and CLICK THRESHOLD settings.





The pen tip does not function.	<p>Be sure you are using only a compatible Wacom pen, such as the pen that shipped with your product, or a Wacom accessory tool specified for use with Intuos. Other pens may not function properly on the tablet.</p> <p>Check the control panel PEN tab and verify that a CLICK function is assigned to the tip.</p> <p>The Status LED should brighten when the tip is pressed. If not, you may have defective hardware. See <a href="#">Testing the tablet controls and tools</a>.</p>
Changing the settings of the pen or other tool has no effect.	<p>Make sure you are changing the settings for the tool and application that you are using. See <a href="#">Creating an application-specific setting</a>.</p>
The pen side switch does not work.	<p>Be sure you are using only a compatible Wacom pen, such as the pen that shipped with Intuos or a Wacom accessory tool specified for use with Intuos. Other pens may not function properly on the tablet.</p> <p>Be sure to press the side switch when the pen tip is within 10 mm (0.4 inch) of the tablet active area. Do this without pressing down on the pen tip.</p> <p>In the Wacom Tablet control panel, verify that the side switch is set to the function you are expecting to occur for the application and tool you are using.</p> <p>Check the SIDE SWITCH MODE. If CLICK &amp; TAP is selected, you will need to first press the side switch while touching the pen tip to the tablet surface in order to perform a click function. See <a href="#">Options</a>.</p> <p>The Status LED should brighten when you press the side switch. If not, you may have defective hardware. See <a href="#">Testing your tablet</a>.</p>
The screen cursor “jumps” back.	<p>Do not place an Intuos tool on the tablet when it is not in use, or when you are using another pointing device. Leaving your tool on the tablet may interfere with screen cursor positioning when using other input devices.</p>
You cannot move the cursor where you want to on the screen, or the line you are drawing does not line up with the location of the pointer in paint applications.	<p>Open the Wacom Tablet control panel and go to the MAPPING tab. Verify that PEN MODE is selected and that the SCREEN AREA is set to FULL for the selected tool and application. If this does not help, click on the DEFAULT button to reestablish tablet to screen mapping. If you are still having difficulty, remove the tablet preferences (see <a href="#">Windows-specific problems</a> or <a href="#">Mac-specific problems</a>).</p> <p>Confirm whether the pen does (or does not) function. See <a href="#">Testing the tablet controls and tools</a>.</p>
When using Intuos on a multiple monitor system, you cannot use the pen to control the other monitor(s).	<p>Cycle pen control for Intuos between your displays by pressing an ExpressKey or pen button that is set to <a href="#">DISPLAY TOGGLE</a>.</p> <p>Verify that the SCREEN AREA in the MAPPING tab is set to FULL.</p> <p>You can also use your pen to control the other monitors in mouse mode. To use mouse mode, first set a pen button to MODE TOGGLE.... Then use the button to toggle between PEN MODE and MOUSE MODE.</p>







## TOUCH PROBLEMS

Touch does not work.

Enable touch by pressing an ExpressKey that is set to TOUCH ON/OFF. If that does not work, move the touch on/off slider switch to the opposite position, and try again.

Touch does not seem to fully work. The screen cursor can be moved, but other actions or gestures do not work.

If the tablet driver does not load properly, basic touch movement will be recognized but other actions and gestures will not. Install the driver software for the tablet.

The tablet does not reliably recognize multi-finger touch.

If you hold your fingers too close together, the tablet may not recognize them as being separate. Try moving your fingers a little further apart.

Cannot zoom-in or zoom-out when working with Adobe Photoshop.

If zoom functions do not operate correctly within Photoshop, verify that the ZOOM WITH SCROLL WHEEL function is not selected within the Photoshop PREFERENCES options.

Scrolling and panning gestures do not function correctly when working with Adobe Photoshop.

If touch gestures do not operate correctly within Photoshop, verify that the ZOOM WITH SCROLL WHEEL function is not selected within the Photoshop PREFERENCES options.

Rotation gestures do not seem to work consistently, or not at all.

Rotation may work differently depending on the application you are working with. For example, rotation may work smoothly in 90-degree increments or not at all.

For best recognition of this gesture, position your fingers diagonally on the tablet surface, at least 25 mm (1 inch) apart.





## WIRELESS CONNECTION PROBLEMS

The computer does not have an available USB port.

Check if there is an available USB port on a USB hub. If not available, add a USB hub or USB card.

After pressing the power button on the wireless module, the LED glows steadily for 4 seconds and then turns off.

If a wireless connection is not established, the wireless module will turn off after 4 seconds.

- Make sure the wireless receiver is properly connected to an active USB port on your computer or USB hub.
- Move the tablet closer to the antenna and make sure there are no metal or other high-density obstructions in the line of sight between the tablet and your computer.

Again press the power button to activate the connection.

After turning on the wireless module, the LED indicates good functionality but the screen cursor cannot be moved.

Be sure you have not turned off touch. See [Setting the touch options](#).

Be sure you are using the pen correctly. Review [using the Pen](#).

Switch the wireless module off, then back on.

If the battery charge is low, try [Charging the battery](#).

A wireless connection has been made, but the tablet does not seem to work correctly.

Be sure you have correctly installed the tablet driver software.

See also [Optimizing the wireless connection](#).

The tablet works when connected with the USB cable, but turns off as soon as the cable is disconnected.

Confirm the wireless module and receiver are correctly installed, and that the wireless module is turned on.

Check the battery. See [Battery and wireless connection status](#).

- Open the tablet wireless compartment cover and verify that the battery is properly installed.
- Check the battery appearance to ensure there is no leakage or other indication of damage.
- Charge the battery overnight and try again. If the problem persists, the battery may be completely discharged or damaged and can no longer hold a charge. If so you will have to purchase a replacement battery. See [Ordering parts and accessories](#).





The wireless LED does not illuminate after pressing the power button on the wireless module.

1. Verify the Wacom wireless receiver is properly connected to an active USB port. If connecting to a USB hub, make sure the hub is connected to an active USB port and that the hub is active.
2. Verify the Wacom wireless module is properly installed in the tablet. Press the power button to connect wirelessly.
3. If the LED still does not light, connect the USB cable between your tablet and computer.

On the wireless module, check the battery status LED. Amber indicates the battery is charging. Green indicates the battery is fully charged. If the LED remains off, the battery may be defective. Replace the battery.

4. If both the tablet status and wireless module LEDs remain off, then contact the Wacom support staff for the area where your product was purchased. See [Technical support options](#).

When using the tablet, the screen cursor or pen strokes seem to lag or skip in some applications.

See [Optimizing the wireless connection](#) for tips on improving the connection.

The battery charging process seems to stop whenever the computer enters sleep mode.

As required, adjust your system power or energy saver settings so that the computer does not enter sleep mode while the tablet battery is charging.

## WINDOWS-SPECIFIC PROBLEMS

You suspect the tablet preferences may be corrupted, or you want to make sure that all settings are at their factory defaults.

Use the Wacom Tablet Preference File Utility to work with preferences. Close any open applications. Click the START icon and select ALL PROGRAMS. Then select WACOM TABLET and WACOM TABLET PREFERENCE FILE UTILITY.

1. It is a good idea to first back up your tablet preferences. In the TABLET PREFERENCE FILE UTILITY dialog box, click BACKUP... and follow the prompts.
2. Use the Tablet Preference File Utility to delete the tablet preferences as follows:

Single user. Under MY PREFERENCES, click REMOVE to delete the preferences for the current user.

Multiple users. Under ALL USER PREFERENCES, click REMOVE to delete preferences for multiple users. Administrator rights are required to delete preferences for all users. Relaunch any currently open tablet-aware applications that you may be running.

You can quickly restore tablet preferences that have been backed up by clicking RESTORE... under MY PREFERENCES.





## MAC-SPECIFIC PROBLEMS

At startup, a dialog box appears telling you that either the driver failed to load or the tablet preferences have not yet been created.

The tablet was not detected at startup.

### If using a wireless connection:

- Make sure the wireless connection is active. See [Battery and wireless connection status](#).
- From the GO menu, select UTILITIES and launch the SYSTEM PROFILER. Select USB from the HARDWARE section of the CONTENTS list. A Wacom USB tablet model should be listed. If a tablet model is not listed, check the wireless connection.

### If connected with the provided USB cable:

- Make sure the USB cable is securely connected to an active USB port on your computer or USB hub. Check to make sure that the Status LED is illuminated. If your tablet is plugged into a USB hub, make sure the hub is connected and active. If you still have a problem, try connecting the USB cable directly to your computer (not to a hub).
- From the GO menu, select UTILITIES and launch the SYSTEM PROFILER. Select USB from the HARDWARE section of the CONTENTS list. A Wacom USB tablet model should be listed. If a tablet model is not listed, check the USB tablet cable connection or try plugging the tablet into a different USB port.

If you are still having difficulties, uninstall and then reinstall the tablet driver software.

If this does not help, contact Wacom for Technical Support. See [Technical support options](#).





You suspect the tablet preferences may be corrupted, or want to make sure that all settings are at their factory defaults.

Use the Wacom Tablet Utility to work with your preferences. Close any open applications. Open the main APPLICATIONS folder. Then open the WACOM TABLET folder and run the WACOM TABLET UTILITY.

- It is a good idea to first back up your tablet preferences. In the Wacom Tablet Utility, select CURRENT USER or ALL USERS. Then click BACKUP... and follow the prompts.

- Then, delete the tablet preferences as follows:

Single user. When the utility starts, select CURRENT USER and click REMOVE. Log out, then log back in. When the tablet driver loads it will create a new preferences file with the factory defaults.

Multiple users. When the utility starts, select ALL USERS and click REMOVE. Log out, then log back in. When the tablet driver loads it will create new preferences files with the factory defaults.

You can quickly restore tablet preferences that have been backed up for the CURRENT USER or ALL USERS by clicking RESTORE... within the utility.

**Note:** Do not manually remove the WACOM TABLET.PREFPANE file from the main LIBRARY PREFERENCE PANES folder. This file is only to be removed when uninstalling the Wacom software driver, and then only when using the Wacom Tablet Utility.

---

Ink does not work correctly with Intuos.

There may be a problem with the Ink preferences. Remove the damaged preference files as follows. They will be re-created when you enable handwriting recognition.

1. Open SYSTEM PREFERENCES, choose SHOW ALL and select INK. Then turn off handwriting recognition.
2. From the GO menu, choose your HOME. Open the LIBRARY and PREFERENCES folders. Remove the following preferences:
  - COM.APPLE.INK.FRAMEWORK.PLIST
  - COM.APPLE.INK.INKPAD.PLIST
  - COM.APPLE.INK.INKPAD.SKETCH
3. Go back to SYSTEM PREFERENCES and INK, and then enable handwriting recognition.
4. Test the Ink function using your Wacom tablet and pen.

If this procedure does not resolve your problem with Ink, contact Apple Support for further assistance. Wacom is not the software manufacturer for Ink and we are limited in our abilities to support a third-party software application.





## TECHNICAL SUPPORT OPTIONS

If you have a problem with your tablet, first check the tablet installation guide to be sure the unit is installed correctly. Then review the [Troubleshooting](#) procedures.

If you cannot find the answer in this manual, you may find updated information about your problem in the appropriate Read Me file for your platform (located on the Intuos installation CD). You can also visit [www.wacom.com](http://www.wacom.com) where you can choose the Wacom web site for your region and check the product FAQs (Frequently Asked Questions).

If you have an Internet connection you can download the latest software drivers from the Wacom web site for your region. Check the Notes linked to the driver download page for updated information. See [Obtaining software updates](#).

Check the Customer Care options on the Wacom web site for your region. You may find answers to your question without having to make a phone call.

You can also contact the Wacom Customer Care Center by visiting the Wacom web site for your region and completing an Email Inquiry form.

If you cannot solve the problem and you think your tablet is not working properly, contact the Wacom Customer Care staff for the area where your product was purchased. You can also find contact information by checking the Wacom web site for your region.

When you call, you should be at your computer with the following information available:

- This manual.
- Tablet serial and model number. These are located on the bottom of the tablet.
- Driver version number. This number is on the Intuos installation CD, or click on the Wacom Tablet control panel ABOUT button.
- The make and model of your computer, and the operating system version number.
- A list of peripheral devices attached to your computer.
- The software application and version you were using when the problem occurred.
- The exact wording of any error message that appeared on your screen.
- What happened and what you were doing when the problem occurred.
- How you tried to solve the problem.





## OBTAINING SOFTWARE UPDATES

Wacom periodically updates the tablet software driver to maintain compatibility with new products. If you are having a compatibility problem between Intuos and a new hardware or software product, it may be helpful to download a new software driver (when available) from the Internet.

Visit [www.wacom.com](http://www.wacom.com) for support, product drivers, or other software updates.

## CARE AND MAINTENANCE

Keep the pen and the Intuos surface clean. Dust and dirt particles can stick to the pen and cause excessive wear to the surface. Regular cleaning will prolong the life of your surface and pen.

Store your Intuos and pen in a clean, dry place and avoid extremes in temperature. Room temperature is best for tablet use and storage.

Do not disassemble the Intuos or the pen. Taking apart the product will void your warranty.

**Important: Take care to never spill liquids onto the Intuos or the pen. Be especially careful of getting the display, ExpressKeys or pen buttons and pen tip wet, as they contain sensitive electronic parts that will fail if they are exposed to liquids.**

Avoid scratching the Intuos with a worn pen nib by replacing your nibs frequently. See [Replacing the pen nib](#).

To clean the Intuos or the pen, use a soft, damp cloth. You can also dampen the cloth using a very mild soap diluted with water. Do not use any other substances, liquids or solvents to clean the tablet or pen.

To clean the Intuos surface, use an anti-static cloth or a slightly damp cloth. Apply light pressure, and do not make the surface wet. Do not use any type of detergent to clean the Intuos, as it may damage the surface. This damage is not covered by the warranty.





## APPENDIX

This section contains instructions for uninstalling the tablet software, and using other applications and capabilities with your Intuos.

[Uninstalling Intuos](#)

[Using applications integrated for tablet control](#)

[Pen and digital ink capabilities in Windows](#)

[Product information](#)

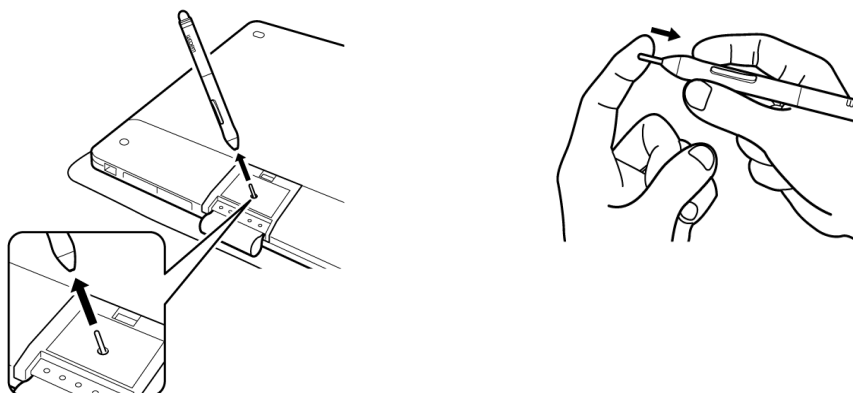
[Ordering parts and accessories](#)

[Warranty Service](#)

### REPLACING THE PEN NIB

The pen nib (tip) will wear with normal use. Excessive pressure will cause it to wear sooner. To protect your Intuos from being scratched and for best performance, periodically replace your pen nibs, or when the nib gets too short or develops a flat point.

You can quickly remove a worn nib from your pen by using the nib puller pad on the back of the Intuos, and then manually insert a new nib, as shown.







## UNINSTALLING INTUOS

Follow the appropriate procedure below to remove the tablet driver software from your system.

### Windows 8:

1. From the Windows 8 Start screen, right-click in the screen's bottom left corner and chose CONTROL PANEL from the pop-up menu. If you are using the Windows 8 Classic Desktop, press the Windows key on your keyboard, or select the Windows icon in the Charms bar, to access the Start screen.
2. Choose UNINSTALL A PROGRAM or ADD OR REMOVE PROGRAMS.
3. Select WACOM TABLET and click on the REMOVE button.

### Windows 7 and Vista:

1. Click START and choose CONTROL PANEL.
2. Click UNINSTALL A PROGRAM or ADD OR REMOVE PROGRAMS.
3. Select WACOM TABLET and click on the REMOVE button.

Note: You may need to reboot your computer for the uninstall to take effect.

### Mac:

1. From the GO menu, choose APPLICATIONS and open the WACOM TABLET folder.
2. Double-click on the WACOM TABLET UTILITY icon. Click on the TABLET SOFTWARE: REMOVE button. Enter your administrator log on name and password.
3. After the removal is completed, click OK.
4. Shut down your computer.
5. Disconnect the Intuos from your computer.

See [Obtaining software updates](#) for information on downloading a new software driver (when available) from the Internet.





## USING APPLICATIONS INTEGRATED FOR TABLET CONTROL

Some software applications may be designed to directly control ExpressKeys function(s). When working with these applications, the ExpressKeys may perform differently than the function that is set in the Wacom Tablet control panel.

- When an ExpressKey is overridden by an application, the ExpressKey setting will automatically update, using either “Application Defined” or the new function name. Some or all of the ExpressKeys may be overridden, depending on the application.
- An integrated application will control the ExpressKeys only when that application is active and in the foreground. When you close that application or select a new application pane to work in, your Wacom Tablet control panel settings are returned to their previous state.
- To review the ExpressKey, or pen settings for the current front-most application, set an ExpressKey to [SETTINGS](#) and press the key at any time.

Applications that have been integrated in this manner will typically provide you with the opportunity to opt-out or disable this functionality when first using your Wacom product with the application. See the documentation provided with your application for any specific details on functionality and how to customize or disable this feature.

If an automatic prompt or the application’s documentation does not describe how to disable this behavior, you can use the Wacom Tablet control panel to create settings that will override the behavior of the integrated application. See [Customizing your application settings](#).

**Important:** If an application-specific setting has been created for an integrated application, setting an ExpressKey to APPLICATION DEFINED will still allow the integrated application to control the function.





## PEN AND DIGITAL INK CAPABILITIES IN WINDOWS

Microsoft Windows 8, Windows 7 and Vista provide extensive support for pen input. Pen features are supported in all versions of Windows 8, Windows 7 and Vista, except Windows 7 Starter Home Basic, and Windows Vista Home Basic. Use Intuos and your Wacom pen for quick, intuitive results.

- Note taking. Jot notes and capture quick sketches in Windows Journal. Use the Journal search engine to locate your handwritten content.
- Handwriting recognition. Quickly enter handwritten information anywhere the computer accepts typed input. Convert your handwritten content to typed text at any time.
- Digital Ink in Microsoft Office 2007. Utilize the enhanced digital mark-up and inking tools found on the REVIEW tab within applicable applications.

The Windows Input Panel enables you to use handwriting or an on-screen keyboard to directly enter text with your Wacom pen.

To launch the Input Panel, do one of the following:

- Click on the Input Panel icon which appears when you move the screen cursor into a text entry area.
- Click on the Input Panel tab, located by default on the left edge of the display screen.
- Click on the Tablet PC Input Panel icon located on the Windows Taskbar. If the icon is not visible, right-click on the Taskbar, select TOOLBARS, and TABLET PC INPUT PANEL.

To disable the Input Panel:

1. Open the Tablet PC Input Panel.
2. Select TOOLS and OPTIONS.
3. Choose the OPENING tab and uncheck the following boxes:
  - FOR TABLET PEN INPUT, SHOW THE ICON NEXT TO THE TEXT BOX
  - SHOW THE INPUT PANEL TAB.
4. Click OK.

For details, study the documentation that came with your system, including the Windows training tools and Tablet PC tutorial. To access the Tablet PC Pen Training, from the START menu choose ALL PROGRAMS, TABLET PC, and TABLET PC PEN TRAINING. Search the Windows help system for training tools if they are not available from the START menu.





Check the Microsoft web site for enhanced information about digital inking in Windows. You can also visit the Wacom web site at [www.wacom.com](http://www.wacom.com) and search digital inking in Windows.

Note: The following workarounds in the Wacom software driver improve performance in Windows 7 and Vista:

- The Pen Flicks and ‘press-and-hold-to-right-click’ features are disabled in graphics applications using the Wintab API.
- There is no pressure sensitivity in Journal and other Ink features when both the Flicks and ‘press-and-hold-to-right-click’ features are disabled in the Windows 7 PEN AND TOUCH or Windows Vista PEN AND INPUT DEVICES control panel.

## PRODUCT INFORMATION

To learn more about Intuos, visit the Wacom web site for your region. You can also discover which software applications are currently tablet enhanced to support the pressure sensitivity and other special functionality of your tablet by checking the software applications

Specifications for your Intuos are provided in the Important Product Information document included on your product CD.

USA, Canada, Central and South America	<a href="http://www.wacom.com">http://www.wacom.com</a>
Europe, Middle East and Africa	<a href="http://www.wacom.eu">http://www.wacom.eu</a>
Japan	<a href="http://tablet.wacom.co.jp">http://tablet.wacom.co.jp</a>
Asia Pacific (English)	<a href="http://www.wacom.asia">http://www.wacom.asia</a>
China (Simplified Chinese)	<a href="http://www.wacom.com.cn">http://www.wacom.com.cn</a>
Korea	<a href="http://www.wacom.asia/kr">http://www.wacom.asia/kr</a>
Taiwan	<a href="http://www.wacom.asia/tw">http://www.wacom.asia/tw</a>
Thailand	<a href="http://www.wacom.asia/th">http://www.wacom.asia/th</a>

## ORDERING PARTS AND ACCESSORIES

For information on purchasing parts and accessories, refer to the website for your region.

You can also do the following:

- In the U.S. or Canada, call 1.888.884.1870 (toll-free). In the U.S., you may also visit Wacom’s web site at <http://direct.wacom.com>.
- In Europe, call +49 (0)180.500.03.75 or send an email to [spareparts@wacom.eu](mailto:spareparts@wacom.eu). Or visit <http://shop.wacom.eu>. You can also contact your local dealer, distributor, or technical support using the appropriate number for your region.
- In Australia, Singapore, Taiwan and Korea, please visit: [www.BuyWacom.com.au](http://www.BuyWacom.com.au), [www.BuyWacom.com.sg](http://www.BuyWacom.com.sg), [www.BuyWacom.com.tw](http://www.BuyWacom.com.tw) and [www.BuyWacom.co.kr](http://www.BuyWacom.co.kr), respectively.
- In other countries, please contact your local dealer or distributor.

Some parts and accessories may not be available in all regions.





## WARRANTY SERVICE

The full product warranty and licensing agreement is provided in the Important Product Information document included on your product CD.

### WARRANTY SERVICE IN THE U.S. AND CANADA

To obtain Warranty service within the U.S. or Canada contact:

Wacom Support Center

Phone: 1.360.896.9833

Email Inquiry form: <http://www.wacom.com/en/support/contact-support/technical-contact>

### WARRANTY SERVICE OUTSIDE OF THE U.S. AND CANADA

For products purchased or used outside the United States and Canada, the warranty period may be determined by regional requirements. The warranty period for your pen display is described on the Support page of the Wacom web site for your region, or contact Wacom Technical Support.

#### Wacom Technical Support in Asia Pacific (except Japan and China)

Detailed Asia Pacific Limited Warranty policy and product registration may be found online at <http://www.wacom.asia>.

To obtain technical support or Warranty service within Southeast Asia, Oceania and Taiwan, please contact Wacom Customer Support Service for your region.

Phone numbers can be found at: <http://www.wacom.asia/customer-care>.

Should you have any questions about this Agreement, or if you want to contact Wacom, please write to:

#### IN NORTH AND SOUTH AMERICA CONTACT:

Wacom Technology Corporation  
1311 SE Cardinal Court  
Vancouver, Washington 98683  
U.S.A.

#### IN JAPAN CONTACT:

Wacom Co., Ltd.  
Sumitomo Fudosan Shinjuku Grand Tower 31F  
8-17-1 Nishi-Shinjuku, Shinjuku-ku  
Tokyo 160-6131  
Japan

#### IN ASIA PACIFIC CONTACT:

Wacom Co., Ltd.  
Sumitomo Fudosan Shinjuku Grand Tower 31F  
8-17-1 Nishi-Shinjuku, Shinjuku-ku  
Tokyo 160-6131  
Japan

#### IN MAINLAND CHINA (EXCEPT HONG KONG) CONTACT:

Wacom China Corporation  
1103 Beijing IFC West Tower  
No. 8, Jianguomenwai Street,  
Beijing, 100022, China  
E-mail: [support@wacom.com.cn](mailto:support@wacom.com.cn)





## GLOSSARY

**Active area.** The navigation and drawing area of the tablet where touch or your Intuos tools are detected. See [touch sensor](#).

**Application-specific settings.** Intuos tool and tablet settings that have been customized for individual applications. The Wacom Tablet control panel enables you to customize your tablet to behave uniquely in different applications. Application-specific settings are in effect whenever you use the application. See [Creating an application-specific setting](#)

**Aspect.** The ratio between the vertical and horizontal dimension of the tablet or display.

**Click force.** The amount of force you must apply to the pen tip for a click to occur.

**Digital Ink.** A broad category that typically describes handwritten content which has been created using pen-based input on a computer. This handwritten content takes the form of sketches, ink mark-up, or handwriting. The handwriting can optionally be converted to typewritten text or simply left alone for use in its original format. Depending on your system and applications settings, the handwritten text you make with digital ink can be converted on-the-fly or at another time.

**Display Toggle.** An Intuos feature that allows you to work with your tablet on all displays or on one display at a time. Available only on multiple monitor systems. See [working with Display Toggle](#).

**Double-click distance.** The maximum distance (in screen pixels) that the screen cursor can move between clicks and still be accepted as a double-click. Increasing the double-click distance makes double-clicking easier, but may cause a delay in brush strokes in some graphics applications.

**Double-click speed.** The maximum time that can pass between clicks and still be accepted as a double-click.

**Eraser-aware application.** A software application that has built-in support for the pen eraser. These applications take advantage of the eraser in different ways, depending on what makes sense for the application.

**ExpressKeys.** The customizable control keys located on your Intuos tablet. See [Using the ExpressKeys](#).

**Journal.** A Microsoft Windows application that electronically simulates a physical journal pad, but with the advantages of digital note taking. For example, you can create quick sketches and jot handwritten notes that can be converted to text and sent on to colleagues for digital mark-up.

**LED.** Light-Emitting Diode. Used as tablet indicator light(s).

**Mapping.** The relationship between the tool position on your Intuos tablet and the cursor position on the monitor screen.

**Modifier.** Modifier keys include SHIFT, ALT, and CTRL for Windows, or SHIFT, CONTROL, COMMAND, and OPTION for Mac. You can customize your Intuos tool buttons or ExpressKeys to simulate a modifier key.

**Nib.** The replaceable pen tip.





Pen input. A method of controlling a computer using the pen on your Intuos tablet.

Pen mode. A pen input method of positioning the screen cursor. Wherever you place your Intuos pen on the tablet, the screen cursor will jump to the corresponding point on the screen. This is known as absolute positioning, and is the default setting for Intuos pens. Pen mode allows you to quickly position the screen cursor without having to first find it and then move it across the desktop.

Pressure sensitive. A quality of the Wacom pen tip and eraser that senses the amount of pressure being applied. This is used to create natural-looking pen, brush, and eraser strokes in applications that are pressure sensitive. Pressure-sensitive application. Any application that supports pressure-sensitive input.

Proximity. The height above the tablet [active area](#) where pen detection occurs. See also [Using the side switch](#).

Radial Menu. A hierarchical menu (in radial format). Each level of the menu consists of eight menu slices which may contain various features and options to choose from. You can customize the buttons of your pen or tablet to display this menu.

Tablet PC Input Panel (TIP). The Microsoft Windows Tablet PC Input Panel enables you to use your Wacom pen to create handwritten notes or work with an on-screen keyboard. The Input Panel dynamically converts your handwriting to text. Information you create can then be inserted into other documents, spreadsheets, or illustrations.

Touch. A method of interacting with a computer using only your fingers on the Intuos tablet. May also be referred to as “touch input”.

Touch sensor. The navigation area of your Intuos tablet where touch is detected. The touch sensor resides within the active area, and does not accept pen input.





## INDEX

About the manual	5	the touch experience	18
Accessories and parts		using	13
ordering	68	Mac-specific problems, troubleshooting	60
Active area, understanding	11	Maintenance and care	63
Airbrush		Manual, about	5
replacing the tip	64	Mapping, to multiple monitors	12
Applications, using integrated	66	Multiple	
Application-specific settings		monitors	
changing	37	mapping to	12
creating	36	working with	12
removing	37	tablets, installing	38
Button functions	28	Navigation, customizing for touch	20
Care and maintenance	63	Nib, replacing	64
Control panel		Ordering parts and accessories	68
basics	12	Parts and accessories	
features	23	ordering	68
Controls, testing	52	Pen	
Customizing	22	features	8
double-click	24	holding	14
Radial Menu	33	positioning with	15
tablet to screen mapping	25	pressure sensitivity, working with	15
tip feel	24	replacing the tip	64
Diagnostics	52	side switch	16
Display Toggle, working with	34	testing	53
Double-click, customizing	24	tip, replacing	64
Driver downloads, obtaining	63	using	13
Express View display	21	Pen mode	25
ExpressKey defaults	17	Pen problems, troubleshooting	55
ExpressKeys		Positioning, with pen	15
testing	53	Preferences, managing tablet	38
using	16	Pressure sensitivity, working with	15
Features		Product information	68
control panel	23	Radial Menu	
pen	8	customizing	33
Force proportions	25	using	33
Functions, button	28	Removing application-specific settings	37
General problems, troubleshooting	54	Requirements, system	6
Holding		Screen area, portion of	26
pen	14	Settings	
Information, product	68	changing application specific	37
Installing multiple tablets	38	creating application specific	36
Intuos		removing application specific	37
setting up	9	Set-up	9







Side switch, using	16	Radial Menu	33
Software		touch	18
driver downloads	63	Windows-specific problems, troubleshooting	59
uninstalling	65	Wireless operation	39
System requirements	6	battery	
Tablet		charging	43
area, portion of	27	life	46
ExpressKeys		management	43
testing	53	replacement	47
using	16	components	39
preferences, managing	38	connection problems	58
testing	50	establishing a connection	41
Tablet to screen mapping, customizing	25	optimizing the connection	42
Technical Support, contacting	62	power management	43
Testing		power saving	45
controls	52	setup	40
ExpressKeys	53	status	
pen	53	battery	44
tablets	50	connection	44
tools	52	testing the wireless connection	48
Tip feel		wireless module, removal from tablet	43
customizing	24	wireless receiver, storage in tablet	48
Tools			
testing	52		
Touch			
adjusting touch speed	20		
basic actions	19		
gestures	19		
navigating with	19		
options	19		
setting navigation features	20		
speed, adjusting	20		
the experience	18		
Touch problems, troubleshooting	57		
Troubleshooting			
general problems	54		
Mac-specific problems	60		
pen problems	55		
tables	54		
testing controls	52		
testing tools	52		
touch problems	57		
Windows-specific problems	59		
wireless connection problems	58		
Uninstalling software	65		
Using			
applications integrated for tablet control	66		
ExpressKeys	16		
pen	13		

