

beauty reflector
ADAPTERS
INSTRUCTIONS



 **angler**[™]

Introduction

Congratulations on your purchase of an Angler Beauty Reflector Mounting Adapter.

The Angler Beauty Reflector Mounting Adapter will allow you to mount your Angler Beauty Reflector onto your strobe light.

The Angler Beauty Reflector reflects and diffuses light to create a shadowless effect that offers greater contrast and texture than a softbox or an umbrella. Because beauty reflectors produce a natural-looking catchlight, they are ideal for fashion and portrait photography.

MOUNTING ADAPTER CATALOG NUMBER	COMPATIBILITY
EGD-DOL	PAUL C. BUFF ALIEN BEE, EINSTEIN, WHITE LIGHTNING, AND ZEUS; BALCAR; FLASHPOINT
EGD-HOL	ELINCHROM; IMPACT EX; CALUMET GENESIS; INTERFIT EX
EGD-LPS	IMPACT; BOWENS; CALUMET TRAVELITE; COWBOY; INTERFIT STELLAR; JTL; PHOTOFLEX; RIME LITE; WESTCOTT
EGD-SUR	PROFOTO

Contents

- ▶ Mounting adapter
- ▶ User manual

Highlights

- ▶ Steel or aluminum construction
- ▶ Mounts quickly onto the flash head
- ▶ Allows use of Angler 16", 20", 22", and 27" Beauty Reflectors



All photos are for illustrative purposes only. Flash units, lamps, and lightstands are not included with the Angler Beauty Reflector Adapter unless purchased as a kit.

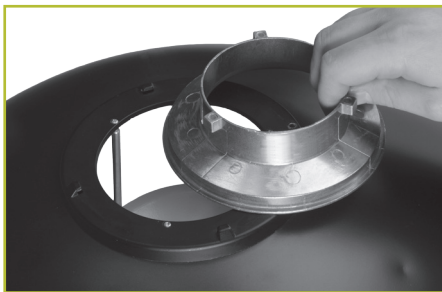
Setting up the Beauty Reflector

In order to mount your Angler Beauty Reflector, you will need to purchase and install the proper mounting adapter.

1. Remove the thumbscrew and washer by rotating the thumbscrew.



2. Slide the mounting adapter into the brackets on the back of the Beauty Reflector.



3. Insert the thumbscrew and washer into the threaded hole and rotate clockwise to tighten.



4. Mount the Angler Beauty Reflector onto your strobe light.



Note: For instructions on how to mount your Angler Beauty Reflector, refer to your strobe's instruction manual.

Specifications

	EGD-DOL	EGD-HOL	EGD-LPS	EGD-SUR
CONSTRUCTION	STEEL	ALUMINUM ALLOY	ALUMINUM ALLOY	STEEL AND RUBBER
WEIGHT	0.5 LB. (227 G)	0.3 LB. (136 G)	0.4 LB. (181 G)	0.65 LB. (295 G)

One-Year Limited Warranty

This Angler product is warranted to the original purchaser to be free from defects in materials and workmanship under normal consumer use for a period of one (1) year from the original purchase date or thirty (30) days after replacement, whichever occurs later. The warranty provider's responsibility with respect to this limited warranty shall be limited solely to repair or replacement, at the provider's discretion, of any product that fails during normal use of this product in its intended manner and in its intended environment. Inoperability of the product or part(s) shall be determined by the warranty provider. If the product has been discontinued, the warranty provider reserves the right to replace it with a model of equivalent quality and function.

This warranty does not cover damage or defect caused by misuse, neglect, accident, alteration, abuse, improper installation or maintenance. EXCEPT AS PROVIDED HEREIN, THE WARRANTY PROVIDER MAKES NEITHER ANY EXPRESS WARRANTIES NOR ANY IMPLIED WARRANTIES, INCLUDING BUT NOT LIMITED TO ANY IMPLIED WARRANTY OF MERCHANTABILITY OR FITNESS FOR A PARTICULAR PURPOSE. This warranty provides you with specific legal rights, and you may also have additional rights that vary from state to state.

To obtain warranty coverage, contact the Angler Customer Service Department to obtain a return merchandise authorization ("RMA") number, and return the defective product to Angler along with the RMA number and proof of purchase. Shipment of the defective product is at the purchaser's own risk and expense.

For more information or to arrange service, visit www.anglerlights.com or call Customer Service at 212-594-2353.

Product warranty provided by the Gradus Group.
www.gradusgroup.com



Angler is a registered trademark of the Gradus Group.

© 2015 Gradus Group LLC. All Rights Reserved.

GG1



anglerlights.com