



Bushnell PRODUCT GUIDE **OUTDOOR 2014**





INNOVATION NEVER ENDS





2014 FEATURED PRODUCTS



NEW EXCURSION HD BINOCULARS

The new Excursion® HD binoculars feature a class-leading wide field of view, plus magnum powered brightness and clarity that will blow the eyecups off any competitor in this price range.

Page 12

NEW GOLF GPS NEO XS WATCHES

Simple to use, lightweight and comfortable to wear. Preloaded with 33,000 courses. No downloads. No membership fees. Easy front/ center/back distances to the green as well as one button shot distance measurement.

Page 62



NEW EQUINOX™ Z NIGHT VISION

With the new digital Equinox™ Z night vision monoculars from Bushnell, you will be able to enjoy outstanding optical clarity, ultimate illumination and an unmatched field of view. Features such as zoom, image capture, video recording and daytime color lead the way in our new flagship series.

Page 83

NEW TOUR Z6 JOLT

With its new ergonomic design and its award-winning PinSeeker with JOLT Technology, the Tour Z6 JOLT sets the standard for being the complete laser rangefinder package - design, size, performance and feel.

Page 65



NEW FISHTRACK™ GPS

Never get lost or lose track of your favorite fishing spot again. The Bushnell FishTrack™ is the newest personal GPS device that allows you to mark up to 25 locations so you can always get back to where you started. It is GPS without all the complications.

Page 102

NEW BEAR GRYLLS SIGNATURE SERIES

Bear Grylls, Bushnell®. The two toughest names in the outdoors. He is one of the world's foremost survival experts. A man who has endured, even thrived, in the most unforgiving environments on the planet. We are proud to welcome him into the Bushnell fold with our specialized Bear Grylls lineup.

Page 54



NEW TROPHY CAM HD 2014

Capture and preserve the wonder of nature in stunning HD. Durable, reliable Trophy Cam HD 2014 records video and images you may never get in person, all in breathtaking high definition.

Page 90

BINOCULARS

page 4



SPOTTING SCOPES

page 32



TELESCOPES

page 46



BEAR GRYLLS SIGNATURE

page 54



GOLF RANGEFINDERS

page 60



LASER RANGEFINDERS

page 70



NIGHT VISION

page 80



TRAIL CAMERAS

page 88



BACKTRACK™ GPS

page 100



SPORTS IMAGING

page 106



BUSHNELL OUTDOORS

page 113

WEBSITES

page 119

GETTING YOU CLOSER TO WHAT MATTERS MOST SINCE 1948.

This is not simply the finest selection of sports optics and outdoor technologies in the industry. It's testament to a philosophy and a way of life. For 66 years, we've been committed to sharpening your connection with this big, beautiful world because we believe your experiences are the fabric of your life. And that it's our appointed mission to see you live as large as possible. Magnify Life.

NATUREVIEW®
Page 18





The world over, there have been more memories made and lives enriched with Bushnell binoculars than with any other brand. That's something we take a lot of pride in, and it's a testament to both the loyalty of our customers and our dedication to serving them. Our Legend® Ultra HD binocular combines our most advanced technologies to create a high definition viewing experience unlike any other: ED Prime Glass, fully multi-coated lenses featuring our Ultra Wide Band technology, Rainguard® HD and a wide field of view. It's where the ingredients and engineering that make us a world leader, come together to make you a believer.

**IMPROVING THE TECHNOLOGIES
THAT MAGNIFY LIFE SINCE 1948.**

**ELITE®**

page 6

**LEGEND® ULTRA HD**

page 8

**FUSION™ 1600 ARC**

page 11

**EXCURSION® HD**

page 12

**BEAR GRIYLLS BINOCULARS**

page 13

**TROPHY® XLT**

page 14

**LEGACY® WP**

page 16

**MARINE™**

page 17

**NATUREVIEW®**

page 18

**H-0™**

page 20

**SPECTATOR™ & XTRA-WIDE®**

page 22

**PERMA-FOCUS®**

page 24

**POWerview®**

page 26

**FALCON™**

page 30

**ACCESSORIES**

page 30

TERMINOLOGY

page 31



PROUD USA COMPANY

REVEALING OUR BRILLIANCE ONE VIEW AT A TIME.

Bright. Clear. HD Imagery.

A 65+ year masterwork of ruggedness, clarity and light transmission, our Elite® binoculars represent the pinnacle of optical performance for today's outdoor enthusiast. Want bright? Fully multi-coated and featuring XTR® technology, our Advanced Fusion Hybrid Lens system* delivers 99.7% light transmission per lens. The result is unmatched edge-to-edge clarity, contrast and color-true imagery - pushed to the highest levels with the use of premium ED Prime glass*. For clarity in the foulest conditions, our patented RainGuard® HD coating eliminates lens fogging, boosts brightness and scatters moisture even faster than the original RainGuard. Elite binoculars are also 100% waterproof*, fogproof and built around a tough, lightweight magnesium chassis for reliability in the most extreme conditions. The view is unbelievable, the technology is unmistakably Bushnell.®

*Except Model 620726

ELITE

Inspired by a combined commitment to heritage and innovation to create the sharpest, clearest and brightest optics available today.



Twist-Up Eye Cups

Innovative center dial is incrementally marked on the twisting ring. Find the desired position, then push the ring out to lock your setting.



Diopter Adjuster

For your comfort and to exclude extraneous light. Able to twist in two different positions.

FEATURES

Advanced Fusion Hybrid Lens System* ▶ RainGuard® HD water-repellent lens coating ▶ XTR technology* ▶ PC-3® Phase Coating* ▶ Twist-up eyecups ▶ Fully multi-coated ▶ ED* Prime glass ▶ BaK-4 prisms ▶ O-ring sealed 100% waterproof/fogproof/dustproof construction* ▶ Long eye relief ▶ Rugged, yet light rubber-armored magnesium chassis with scratch-resistant powder coat* ▶ Locking center diopter adjustment dial* ▶ Comfort neck strap and custom-molded case included

*Except Model 620726

7x 26mm

620726

*Outstanding brightness and clarity.
Sized to go everywhere.*





8x 42mm 628042ED
10x 42mm 620142ED

A versatile choice for steady viewing with extended eye relief and a wider field of view.



HYBRID-FUSION TECHNOLOGY



SPHERICAL LENS

*Spherical aberration :
The lens suffers from the inability to focus all light rays on a single focus point.*



ASPHERICAL LENS ELITE

Even the rays from the edge are focused on a single focus point. The image is sharp.



RAINGUARD® HD

Without it, you're not ready. A wet lens or a misguided breath that would fog conventional glass will never cost you a view. This patented, permanent, water-repellent coating causes moisture from rain, snow, sleet or condensation to bead up and scatter less light, so you get a clear, bright view when other optics would be rendered useless.



XTR® TECHNOLOGY

Using 60 layers of coatings on each prism, this revolutionary system harnesses and optimizes available light, boosting Elite binoculars to their world-leading 99.73% light transmission per lens. It's exclusive to Bushnell® and hands-down the most efficient means for transporting light through an optical system.



ED PRIME GLASS

ED Prime Extra-Low Dispersion fluorite glass delivers amazing color resolution and contrast, and virtually eliminates chromatic aberration and color-fringing to bring out the most distinct details possible in low-light conditions.



PC-3® PHASE COATING

A chemical coating applied to the prisms to enhance resolution and contrast for the brightest and clearest images possible.

MODEL	MAGNIFICATION X OBJ. LENS	SIZE CLASS	FOCUS SYSTEM	PRISM SYSTEM	PRISM GLASS	LENS COATING	RAI- NGUARD® HD	FIELD OF VIEW ft. @ 1000 yds. / m @ 1000m	CLOSE FOCUS (ft. / m)	EXIT PUPIL (mm)	EYE RELIEF (mm)	EYECUPS	WEIGHT (oz. / g)	WATER/ FOG PROOF	ADAPT TO TRIPPOD
628042ED	8x 42	Standard	Center	Roof	Bak-4	Fully Multi & XTR	Yes	330 / 110	8 / 2.4	5.25	19.5	Twist-Up	25.7 / 728	Yes	Yes
620142ED	10x 42	Standard	Center	Roof	Bak-4	Fully Multi & XTR	Yes	314 / 104.7	8 / 2.4	4.2	15.5	Twist-Up	26.1 / 740	Yes	Yes
620726	7x 26	Compact	Center	Porro	Bak-4	Fully Multi	Yes	363 / 121	7 / 2.1	3.7	16	Twist-Up	12 / 342	No	No



PROUD USA COMPANY

A STREAMLINED SHAPE WITH A MASSIVE FIELD OF VIEW.

See what the Legends are made of.

Totally redesigned with a high-performance optics upgrade and a slimmer, lighter, tougher body design, and it's easy to see where we got the "Ultra•HD." For the ultimate in color fidelity, brightness and light transmission, they're equipped with super-premium ED Prime Glass. The razorsharp optics are fully multi-coated and feature our Ultra Wide Band Coating that optimizes brightness and contrast. Rainguard® HD also boosts light transmission while ensuring foul weather or your own breath will never cost you a view. We cut the weight by adding a magnesium chassis, and enhanced comfort with softtouch grip accents on the rubber-armored housing. A locking diopter maintains your settings. With class-leading field of view and extra-long eye relief, the latest chapter of the Legend covers more country with less effort than ever before.

The pocket-sized HD powerhouse.

All the class-dominating optical superiority of our original Legend® Ultra•HD bins in an ultra-compact format ideal for pocket carry. Its double-hinge design helps it achieve an even smaller profile when not in use. 10x magnification, ED Prime glass, FMC optics with our Ultra Wide Band coating and Bak-4 prisms combine to deliver the ultimate HD viewing experience in a fully waterproof design and Rainguard® HD treated optics.

Each Legend® Ultra•HD model includes premium carry case, neckstrap, microfibre lens cloth and deluxe binocular harness. (Except model 190125)



Also available in
Realtree AP camo

10x 36mm 191036
8x 36mm 190836 (camo)

Big time clarity and brightness
in a handy mid-size.



FEATURES

ED Prime glass ▶ Ultra Wide Band Coating ▶ Rainguard® HD water-repellent lens coating ▶ Ultra wide field-of-view ▶ Long eye relief ▶ Lightweight, magnesium chassis ▶ Waterproof/fogproof ▶ Soft-touch grips ▶ Locking diopter ▶ Includes premium carry case, neckstrap, microfibre lens cloth and deluxe binocular harness



ED PRIME GLASS

ED Prime Extra-Low Dispersion fluorite glass delivers amazing color resolution and contrast, and virtually eliminates chromatic aberration and color-fringing to bring out the most distinct details possible in low-light conditions.



ULTRA WIDE BAND COATING

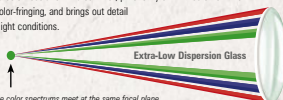
An anti-reflection coating process that is customized for every lens element in the optical path, in order to allow the maximum amount of light from the front glass all the way back to the eyepiece. The result? Optimum brightness and true color across the light spectrum.



RAINGUARD® HD

Without it, you're not ready. A wet lens or a misguided breath that would fog conventional glass will never cost you a view. This patented, permanent, water-repellent coating causes moisture from rain, snow, sleet or condensation to bead up and scatter less light, so you get a clear, bright view when other optics would be rendered useless.

WHY EXTRA-LOW DISPERSION? Unlike ordinary lens surfaces, the ED Prime Extra-Low Dispersion fluorite glass used in our Legend® Ultra HD binoculars allows the visible colors of the spectrum to focus at virtually the same point. This helps provide improved color resolution and contrast, practically eliminates chromatic aberration and color-fringing, and brings out detail even under low-light conditions.



Red, green and blue color spectrums meet at the same focal plane to eliminate color aberration and provide the ultimate in crisp, HD Clear images.

8x 42mm 198042
10x 42mm 191042

Everything you could possibly want in a sport optic.



Each Legend® Ultra HD binocular includes our Deluxe Binocular Harness (Except model 190125).

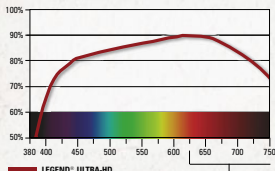
10x 42mm 191043

High-powered viewing and concealment.



Ultra Wide-Band Custom A/R Coating System

All lens surfaces are individually custom coated in order to maximize the transmission of available, usable light across the entire, visible color spectrum (380nm-750nm).



These colors are more prevalent in low light. Critical at peak shooting hours.

10x 25mm 190125

Compact lightweight pocket sizes.



FEATURES

Bak-4 roof prisms ▶ ED Prime glass ▶ Ultra Wide Band Coating ▶ RainGuard® HD water-repellent lens coating ▶ Waterproof/fogproof ▶ Fully multi-coated optics + PC-3 Phase Coated prism ▶ Twist-up eye caps

MODEL	MAGNIFICATION X OBJ. LENS	SIZE CLASS	FOCUS SYSTEM	PRISM SYSTEM	PRISM GLASS	LENS COATING	RAIN- GUARD® HD	FIELD OF VIEW ft. @ 1000 yds. / m @ 1000m	CLOSE FOCUS (ft. / m)	EXIT PUPIL (mm)	EYE RELIEF (mm)	EYECUPS	WEIGHT (oz. / g)	WATER/ FOG PROOF	ADAPT TO TRUPED
190125	10x 25	Compact	Center	Roof	Bak-4	Fully Multi	Yes	285 / 95	6 / 1.8	2.56	15.5	Twist-Up	8.1 / 230	Yes	No
190836	8x 36	Mid-Size	Center	Roof	Bak-4	Fully Multi	Yes	426 / 137	6.2 / 1.9	4.5	15.4	Twist-Up	20.7 / 588	Yes	Yes
191036	10x 36	Mid-Size	Center	Roof	Bak-4	Fully Multi	Yes	341 / 114	6.2 / 1.9	3.6	15.4	Twist-Up	20.7 / 588	Yes	Yes
198042	8x 42	Standard	Center	Roof	Bak-4	Fully Multi	Yes	426 / 142	6.5 / 2	5.3	17.2	Twist-Up	24.7 / 700	Yes	Yes
191042	10x 42	Standard	Center	Roof	Bak-4	Fully Multi	Yes	340 / 113	6.5 / 2	4.2	15.2	Twist-Up	25 / 710	Yes	Yes
191043	10x 42	Standard	Center	Roof	Bak-4	Fully Multi	Yes	340 / 113	6.5 / 2	4.2	15.2	Twist-Up	25 / 710	Yes	Yes



PROUD USA COMPANY

BRING THESE, AND YOU CAN TELL MOTHER NATURE TO BRING IT.

They lock out moisture and soak up abuse with housings that are O-ring sealed, nitrogen purged and wrapped in rubber armor. The fully multi-coated optics are treated with our permanent, patented RainGuard® HD coating, so your view stays bright and clear when conditions don't. For stellar edge-to-edge sharpness and detail, the wide-angle porro prisms are crafted of premium BaK-4 glass. So let Old Mother throw or serve up whatever she wishes. She'll need a couple aspirin after a day with a Legend.

FEATURES

BaK-4 porro prisms ▶ Fully multi-coated optics for maximum light transmission and optimum brightness ▶ Heavy-duty, 100% waterproof/fogproof construction ▶ RainGuard® HD water-repellent lens coating ▶ Twist-up eyecups allow quick adjustment for optimum eye relief ▶ Large center-focus knob for precise focusing - even when wearing gloves ▶ Trim, ergonomic shape for easy, all-day use ▶ Textured, non-glare, non-slip rubber armor absorbs shock ▶ Diopter adjustment for precise and reliable adjustments

**10x 26mm 190126***A convenient, compact performer.*

MODEL	MAGNIFICATION X OBJ. LENS	SIZE CLASS	FOCUS SYSTEM	PRISM SYSTEM	PRISM GLASS	LENS COATING	RAIN- GUARD® HD	FIELD OF VIEW (ft. @ 1000 yds. / m @ 1000m)	CLOSE FOCUS (ft. / m)	EXIT PUPIL (mm)	EYE RELIEF (mm)	EYECUPS	WEIGHT (oz. / g)	WATER/ FOG PROOF	ADAPT TO TRIPOD
190126	10x 26	Compact	Center	Porro	BaK-4	Fully Multi	Yes	262 / 87	10 / 3	2.6	15	Twist-Up	15 / 425	Yes	No



**Fusion 1 Mile
12x 50mm**
202312



Fusion 1 Mile 8x 32mm
202308



Fusion 1 Mile 10x 42mm
202310

VIEWING AND RANGEFINDING PERFECTION, TOGETHER AT LAST.

The ultimate in efficiency, the Fusion melds the best of Bushnell binoculars with world-leading laser rangefinding capabilities. Every detail is magnified with rich contrast and stunning clarity from edge to edge using premium fully multi-coated optics and BaK-4 prisms. At the push of a button, it displays exact distance to your target from 10 to 1760 yds / 1600 m. Built-in ARC Bow Mode delivers the "shoots-like" horizontal distance, while ARC Rifle Mode provides precise bullet-drop and holdover information. Our Matrix Display Technology, RainGuard® HD anti-fog coating and a fully waterproof design ensure reliability and clarity in all conditions. It's the best of all worlds Bushnell, in your hands and at your command.

BINOCULAR FEATURES

XTR® technology for ultimate light transmission ▶ BaK-4 prisms with PC-3® Phase Corrective Coating for superior resolution and clarity ▶ RainGuard® HD water repellent lens coating ▶ 100% waterproof ▶ Matrix Display Technology™ enhances display readout in all lighting conditions ▶ Carrying case, battery and neck strap included

RANGEFINDER FEATURES

10-1760 yards / 1600 meters ranging performance ▶ ARC (Angle Range Compensation) from -90° to +90° ▶ Bow Mode - provides line-of-sight, angle, and true horizontal distance from 10-99 yards / 90 meters ▶ Rifle Mode - provides line-of-sight, angle and bullet-drop/holdover up to 199 inches / cm ▶ VSI (Variable Sight-In) - allows sight-in distance options of 100, 150, 200 or 300 yards / meters sight-in distance when in Rifle Mode ▶ Selective Targeting System, Automatic SCAN, BullsEye™ & Brush™ modes ▶ +/- one yard / meter accuracy



Matrix Display Technology™.

Matrix Display Technology dramatically improves contrast, clarity and light transmission for rapid, positive identification. This technology also allows for visible ranging displays while not sacrificing true color fidelity in all lighting conditions.

MODEL	MAGNIFICATION X OBJ. LENS	SIZE CLASS	WEIGHT (oz. / g)	FOCUS SYSTEM	PRISM SYSTEM	PRISM GLASS	LENS COATING	RAIN- GUARD® HD	FIELD OF VIEW ft. @ 1000 yds. / m @ 1000m	CLOSE FOCUS (ft. / m)	EXT. PUPIL (mm)	EYE RELIEF (mm)	EYECUPS	WATER/ FOG PROOF
202308	8x 32	Standard	30.5 / 875	Center	Roof	BaK-4	Fully Multi & XTR	Yes	377 / 127	10.5 / 3.2	4	18	Twist-Up	Yes
202310	10x 42	Standard	31 / 880	Center	Roof	BaK-4	Fully Multi & XTR	Yes	305 / 101	10.5 / 3.2	4.2	18	Twist-Up	Yes
202312	12x 50	Standard	32 / 930	Center	Roof	BaK-4	Fully Multi & XTR	Yes	252 / 77	10.5 / 3.2	4.2	16	Twist-Up	Yes
RANGEFINDER SPECS		RANGE (yds. / m)	BATTERY TYPE		TARGETING MODES			ARC MODES		RANGING PERFORMANCE				
					SCAN	BULLSEYE	BRUSH	BOW	RIFLE	REFLECTV. (yds. / m)	TREE (yds. / m)	DEER (yds. / m)	ACCURACY (yds. / m)	
202310/201250/202308		10-1760 / 1600	3-volt CR 123 (incl.)		Yes	Yes	Yes	Yes	Yes	1760 / 1600	1000 / 900	500 / 450	+/- 1	



PROUD USA COMPANY

UNDER 700 GRAMMES AND HERE TO CRUSH EVERYTHING IN ITS CLASS.

Supreme brightness and a class-leading field of view. New Excursion® HD binos feature a class-leading, wide field of view, plus magnum powered brightness and clarity that'll blow the eyecups off any competitor in their price range. Fully multi-coated optics and high-performance BaK-4 prisms with our PC-3® Phase Coating produce outstandingly bright, clear images from edge to edge. The rugged, lightweight housing is optimized for comfort and 100% waterproof/nitrogen purged. Side by side, nothing in its class offers a wider, more vivid view than Excursion HD.

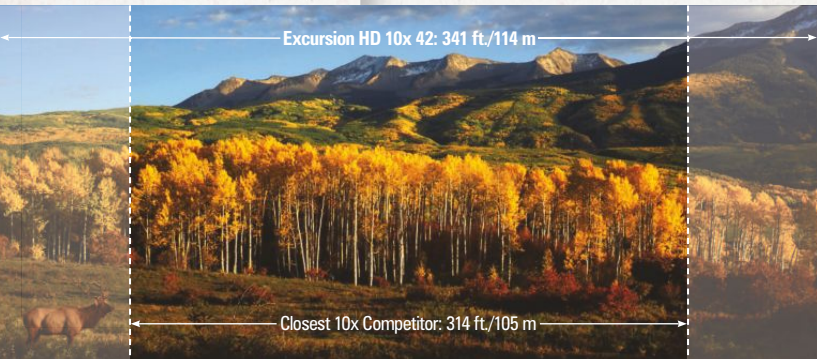


NEW
8x 42mm 242408
10x 42mm 242410

*Wide field of view in magnifications
ideal for long-range observation.*

SEE WHAT YOU'VE BEEN MISSING.

With nearly 10% more viewing area than the closest competitor, Excursion HD binos will cut a mountain down to size with less effort.



Excursion HD 10x 42: 341 ft./114 m

Closest 10x Competitor: 314 ft./105 m

MODEL	MAGNIFICATION X OBJ. LENS	SIZE CLASS	FOCUS SYSTEM	PRISM SYSTEM	PRISM GLASS	LENS COATING	FIELD OF VIEW ft. @ 1000yds. / m @ 1000m	CLOSE FOCUS (ft. / m)	EXIT PUPIL (mm)	EYE RELIEF (mm)	EYECUPS	WEIGHT (oz. / g)	WATER/FOG PROOF	ADAPT TO TRIPPOD
*242408	8x 42	Standard	Center	Roof	Bak-4	Fully Multi	426 / 142	6.5 / 2	5.3	17.2	Twist-Up	24.3 / 690	Yes	Yes
*242410	10x 42	Standard	Center	Roof	Bak-4	Fully Multi	341 / 114	6.5 / 2	4.2	15.5	Twist-Up	23.5 / 666	Yes	Yes

* NEW FOR 2014.



NEW
10x 42mm
181042CL

Wide field of view magnifications ideal for long-range observations.



NEW
8x 25mm 180825CL

Compact, yet ready for any rugged situation.



NEW
9x 32mm 180932CL

The Bear Grylls monocular is ultra compact, perfect for on-the-go adventures.

ONLY OPTICS WORTHY OF THE NAME "BEAR."

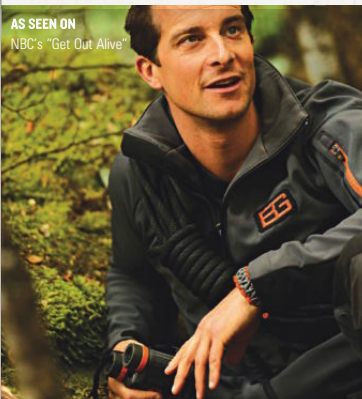
Tough as the man they're named after. Like Bear, they prove their mettle when the conditions range somewhere between awful and unforgiving. Multicoated optics and razor-sharp BaK-4 prisms guide the way, giving you maximum brightness, even when the weather doesn't. And the rugged, waterproof design is made to withstand everything from a scramble up a rock face to long treks in the rain. For those who never flinch in the face of challenge - and expect the same from their optics.

FEATURES

BaK-4 prisms ▶ Multi-coated optics ▶ Waterproof
Embroidered case with BG logo ▶ Fogproof

AS SEEN ON

NBC's "Get Out Alive"



MODEL	MAGNIFICATION X OBJ. LENS	SIZE CLASS	FOCUS SYSTEM	PRISM SYSTEM	PRISM GLASS	LENS COATING	FIELD OF VIEW ft. @ 1000 yds. / m @ 1000m	CLOSE FOCUS ft. / m	EXIT PUPIL (mm)	EYE RELIEF (mm)	EYECUPS	WEIGHT (oz. / g)	WATER/FOG PROOF	ADAPT TO TRUPOD
*181042CL	10x 42	Standard	Center	Roof	BaK-4	Multi-Coated	305°/102	12/3.6	4.2	17	Twist-Up	25/709	Yes	No
*180825CL	8x 25	Compact	Center	Roof	BaK-4	Multi-Coated	360°/120	14/4.6	3.2	13.5	Twist-Up	10.2/290	Yes	No
*180932CL	9x 32	—	—	Roof	BaK-4	Multi-Coated	315°/105	10/3.3	3.6	16	Twist-Up	4.8/137	Yes	No

* NEW FOR 2014.



A NEW LOOK AT WHAT HARD-CORE HUNTERS DEMAND.

World-class optics and superior durability.

With light transmission, clarity and ruggedness as top priorities, we built the ultimate hunting binoculars. Recent upgrades to our XLT series include a new housing that's even more durable and comfortable to use. Fully multi-coated optics and BaK-4 prisms work together to deliver ultra-bright, razor-sharp images through the most critical periods of game movement. And the tough, streamlined Dura-Grip rubber-armored housing is O-ring sealed and nitrogen purged for 100% waterproof/fogproof dependability. Soft-touch thumb grips further improve handling ease, and the objective lenses are now protected from the elements by flip covers (42mm and 50mm only).



PROUD USA COMPANY



10x 28mm 232810

Handy compacts packing big-time brightness and clarity.



8x 32mm 233208

Rugged, long-range roof prism is excellent for outdoor travel.



10x 42mm 232410 234211 (camo)

8x 42mm 234208

Ideal magnification for viewing wildlife at long ranges and wide field of view.



Trophy 8x 56mm 230856

Oversize objective lenses with a 7mm exit pupil and a relative brightness of 49 for incredible low-light performance.



FEATURES*

100% waterproof/fogproof ▶ Fully multi-coated optics
PC-3® Phase Coating ▶ Dura-grip rubber ▶ Fast focus ▶
Soft-touch thumbgrips ▶ Flip objective covers (42 and 50mm
only) ▶ Environmentally friendly glass

* Except model 230856.



12x 50mm
235012

*Outstanding long-range binoculars
with large objective lens
for superior light gathering.*

Trophy XLT binoculars
are made with enviro-
friendly materials.
See Terminology page 31
for further information.



MODEL	MAGNIFICATION X OBJ. LENS	SIZE CLASS	FOCUS SYSTEM	PRISM SYSTEM	PRISM GLASS	LENS COATING	FIELD OF VIEW ft. @ 1000 yds. / m @ 1000m	CLOSE FOCUS (ft. / m)	EXIT PUPIL (mm)	EYE RELIEF (mm)	EYECUPS	WEIGHT (oz. / g)	WATER/FOG PROOF	ADAPT TO TRIPOD
232810	10x 28	Compact	Center	Roof	BaK-4	Fully Multi	298 / 100	8.5 / 3.3	2.8	15.3	Twist-Up	12 / 340	Yes	No
233208	8x 32	Mid-Size	Center	Roof	BaK-4	Fully Multi	393 / 131	9.8 / 3.0	4.0	16.5	Twist-Up	15.5 / 440	Yes	Yes
234208	8x 42	Standard	Center	Roof	BaK-4	Fully Multi	393 / 131	7.5 / 2.3	5.3	17.5	Twist-Up	25 / 765	Yes	Yes
232410	10x 42	Standard	Center	Roof	BaK-4	Fully Multi	325 / 108	8.2 / 2.5	4.2	15.2	Twist-Up	25 / 765	Yes	Yes
234211	10x 42	Standard	Center	Roof	BaK-4	Fully Multi	325 / 108	8.2 / 2.5	4.2	15.2	Twist-Up	25 / 765	Yes	Yes
235012	12x 50	Standard	Center	Roof	BaK-4	Fully Multi	241 / 80	13.0 / 4.0	4.2	18.2	Twist-Up	28 / 793	Yes	Yes
230856	8x 56	Standard	Center	Roof	BaK-4	Fully Multi	346 / 115	6.5 / 2.0	7.0	17.5	Twist-Up	34 / 960	Yes	Yes



PROUD USA COMPANY

OFFSET THE RISING COST OF LIVING TO BE OUTDOORS.

Our Legacy series is custom-fit for a wide range of outdoor enthusiasts, but especially appealing for those on a budget. Yes, the cost is reasonable, but we didn't scrimp on optical performance. All models feature fully multi-coated optics and premium BaK-4 prisms for exceptional light transmission and image clarity. Rugged rubber armoring provides a sure grip and soaks up abuse. And they're 100% waterproof. It's a solid, well-rounded lineup with a single purpose - everything outside.

FEATURES

BaK-4 prisms ▶ Fully multi-coated optics ▶ 100% waterproof/fogproof (model 121225 is weatherproof) ▶ Wide-angle field of view (65 degrees, except zoom) ▶ Rubber armored for secure grip ▶ Center focus ▶ Twist-up eyecups ▶ Long eye relief



10x 50mm
120150



Big 50mm objective for a larger, brighter field of view.



8x 42mm
120842

An exceptionally versatile, easy-handling configuration.



10-22x 50mm
121225

Incredible zoom versatility and extreme viewing power.



MODEL	MAGNIFICATION X OBJ. LENS	SIZE CLASS	FOCUS SYSTEM	PRISM SYSTEM	PRISM GLASS	LENS COATING	FIELD OF VIEW ft. @ 1000 yds. / m @ 1000m	CLOSE FOCUS (ft. / m)	EXT. PUPIL (mm)	EYE RELIEF (mm)	EYECUPS	WEIGHT (oz. / g)	WATER/FOG PROOF	ADAPT TO TRIPOD
120842	8x 42	Standard	Center	Porro	BaK-4	Fully Multi	430 / 143	12 / 3.6	5.3	18	Twist-Up	26.5 / 751	Yes	Yes
120150	10x 50	Standard	Center	Porro	BaK-4	Fully Multi	341 / 114	18 / 5.5	5.0	18	Twist-Up	30.5 / 865	Yes	Yes
121225	10-22x 50	Standard	Center	Porro	BaK-4	Fully Multi	199/60 @ 10x / 126/38 @ 22x	20 / 6	5.0 / 2.3	14	Twist-Up	34.2 / 969	Weatherproof	Yes



7x 50mm
137501

Well-balanced, bright and steady for long hours on the water.

7x 50mm Digital*
137570

Features a built-in, 3-axis digital compass for true heading.

-7° ± 185°
TILT COMPASS

FEATURES

- BaK-4 porro prisms for bright, clear, crisp viewing ▶
- Fully multi-coated optics ▶ 100% waterproof/fogproof ▶
- O-ring sealed and nitrogen purged to keep out moisture ▶
- Highly resistant to saltwater corrosion ▶ Non-slip, non-skid rubber armor cushions bumps and shock, prevents sliding and provides a firm grip when wet ▶ Hermetically sealed ▶
- Fold-down eyecups ▶ 100% UV protection



7x 50mm w/Reticle
137500

A classic marine bino with internal rangefinder and illuminated compass.

BUILT TO WITHSTAND EXTREME NAUTICAL ENVIRONMENTS.

Buoyant, waterproof and corrosion resistant.

So even if they take a dive, these rock-solid workhorses still perform good as new. Our digital model includes an Integrated TILT feature, with Liquid Crystal Display read-out for optimum stabilization even on unruly waters. Ultra-bright, crisp views are built in with their fully multi-coated optics and premium BaK-4 prism glass. And the rugged rubber armor absorbs shock and gives you a sure grip in extreme nautical environments.

*The digital compass delivers reliable accuracy in the world (both Northern and Southern Hemispheres).



MODEL	MAGNIFICATION X OBJ. LENS	SIZE CLASS	FOCUS SYSTEM	PRISM SYSTEM	PRISM GLASS	LENS COATING	FIELD OF VIEW ft. @ 1000 yds. / m @ 1000m	CLOSE FOCUS (ft. / m)	EXIT PUPIL (mm)	EYE RELIEF (mm)	EYECUPS	WEIGHT (oz. / g)	WATER/FOG PROOF	ADAPT TO TRIP/OD
137501	7x50	Standard	Individual	Porro	BaK-4	Fully Multi / UV	380 / 127	25 / 7.6	7.1	18	Fold-Down	36 / 1021	Yes	Yes
137500	7x50	Standard	Individual	Porro	BaK-4	Fully Multi / UV	350 / 117	35 / 10.6	7.1	18	Fold-Down	37 / 1050	Yes	Yes
137570	7x50	Standard	Individual	Porro	BaK-4	Fully Multi / UV	367 / 122	35 / 10.6	7.1	18	Fold-Down	37 / 1050	Yes	Yes



PROUD USA COMPANY

A NATURAL SELECTION FOR WILDLIFE OBSERVERS.

Specially adapted to capture natural wonders.

The most remarkable species are those most adapted to their environment. To see them, your bins must be equally versatile. Bringing bright, sharp views in most environments, NatureView® bins are ideal for outdoor lovers of all ages. We've enhanced our entire lineup, highlighted by our compact, powerful and clear 6x 30mm model. Everything you see here delivers high optical performance with extended eye relief for more comfortable viewing. And all are made with environmentally friendly, lead-free glass, helping to protect nature's sights for generations to enjoy.



NEW
Backyard Birder 8x 40mm
220840

The classic birding binocular. Ideal for beginners.



ROOF-PRISM MODEL FEATURES

BaK-4 roof prisms for bright, clear, crisp viewing ▶ Fully multi-coated optics for superior light transmission and brightness ▶ Textured center-focus knob for easy, precise adjustments ▶ Rugged, non-slip rubber armor absorbs shock
Waterproof/fogproof construction

PORRO-PRISM MODEL FEATURES

BaK-4 porro prisms for bright, clear, crisp viewing ▶ Fully multi-coated optics for superior light transmission and brightness ▶ Textured center-focus knob for easy, precise adjustments ▶ Rugged, non-slip rubber armor absorbs shock

NEW
8x 42mm 224208

Premium performance for all-day viewing comfort.



NEW
10x 42mm 224210

Premium performance for all-day viewing comfort.





NEW
6x 30mm
220630

Bright and clear with a class-leading field of view and an awesome close-focus range. Streamlined design easily goes anywhere you can.

NEW
8x 32mm 220832

Outstanding long-range binocular. Ideal for long-distance birding or wildlife observation.



NatureView® binoculars are made with environmentally friendly materials. See Terminology page 31 for further information.



NEW
10x 42mm 220142

Outstanding long-range binocular. Ideal for long-distance birding or wildlife observation.



NEW
8x 42mm 228042

Outstanding optical performance in a trim, well-balanced roof-prism design.



MODEL	MAGNIFICATION X OBJ. LENS	SIZE CLASS	FOCUS SYSTEM	PRISM SYSTEM	PRISM GLASS	LENS COATING	FIELD OF VIEW ft. @ 1000 yds. / m @ 1000m	CLOSE FOCUS ft. / m	EXIT PUPIL (mm)	EYE RELIEF (mm)	EYECUPS	WEIGHT (oz. / g)	WATER / DUST PROOF	ADAPT TO TRIPOD
*224208	8x 42	Standard	Center	Porro	BaK-4	Fully-Multi Coated	435 / 145	12 / 3.7	5.25	16	Twist-Up	27.0 / 765	No	Yes
*224210	10x 42	Standard	Center	Porro	BaK-4	Fully-Multi Coated	345 / 115	11.5 / 3.5	4.2	15	Twist-Up	27.8 / 788	No	Yes
*220630	6x 30	Standard	Center	Porro	BaK-4	Fully-Multi Coated	419 / 140	9 / 2.7	5	20	Twist-Up	17.3 / 490	Yes	No
*220832	8x 32	Standard	Center	Roof	BaK-4	Fully-Multi Coated	393 / 131	5 / 1.7	4	16.5	Twist-Up	16 / 454	Yes	No
*228042	8x 42	Standard	Center	Roof	BaK-4	Fully-Multi Coated	393 / 131	5 / 1.7	6	17.5	Twist-Up	23.1 / 654	Yes	Yes
*220142	10x 42	Standard	Center	Roof	BaK-4	Fully-Multi Coated	325 / 108	13 / 4.0	4.2	15.2	Twist-Up	23.1 / 654	Yes	Yes
*220840	8x 40	Standard	Center	Roof	BaK-4	Multi Coated	365 / 122	14 / 4.3	5	14	Fold Down	25.4 / 720	No	Yes

* NEW FOR 2014.

ONLY THING WE DIDN'T DO IS TEACH THEM TO SWIM.

The ultimate on-the-water viewing companions, our ever-popular H2O™ binoculars have been enhanced with a Soft Texture Grip to keep them on board and in your hands in the most challenging conditions. Just as before, they're O-ring sealed and nitrogen purged to ensure stunning views no matter how wet they get. To maximize light transmission and clarity, standard equipment includes multi-coated optics and premium quality BaK-4 prism glass. From the streamside to the Gulf Stream, the world simply looks better through the Bushnell® H2O.



PROUD USA COMPANY



8x 42mm 134218
10x 42mm 134211
12x 42mm 134212

Our all-purpose, full-size BaK-4 porro prism for high magnification at a distance.



7x 50mm 157050

Grace your boat deck with a huge field of view and ideal magnification for long-range viewing.

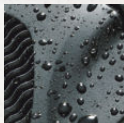
FEATURES

BaK-4 prisms for bright, clear, crisp viewing ▶ Multi-coated optics for superior light transmission ▶ 100% waterproof: O-ring sealed and nitrogen purged for reliable, fog-free performance ▶ Non-slip rubber armor absorbs shock while providing a firm grip ▶ Twist-up eyecups ▶ Large center-focus knob for easy adjustments ▶ Longer eye relief



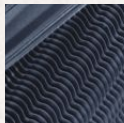
Waterproof Construction

Waterproof construction and textured, non-slip rubber pads give you a grip on the situation, even where it is slippery, wet and wild.



Non-Slip Rubber Armor

However wet the conditions get, the rugged rubber armor gives you a sure grip while absorbing shock.





8x 42mm 158042
10x 42mm 150142

Choose 8x or 10x - both pack powerful, bright optics into a 100% waterproof package.



8x 25mm 138005
10x 25mm 130105
12x 25mm 132105

Compact, yet ready for any wet-weather application.



10x 26mm 150126

Inverted porro-prism design for high quality and reduced size.

MODEL	MAGNIFICATION X OBJ. LENS	SIZE CLASS	FOCUS SYSTEM	PRISM SYSTEM	PRISM GLASS	LENS COATING	FIELD OF VIEW ft./@1000yds. / m./@1000m	CLOSE FOCUS ft. / m	EXIT PUPIL (mm)	EYE RELIEF (mm)	EYECUPS	WEIGHT (oz. / g)	WATER/ FOR PROOF	ADAPT TO TRIPOD
158042	8x 42	Standard	Center	Roof	BaK-4	Multi	368 / 123	12 / 3.6	5.25	17	Twist-Up	25 / 709	Yes	No
150142	10x 42	Standard	Center	Roof	BaK-4	Multi	305 / 102	12 / 3.6	4.2	17	Twist-Up	25 / 709	Yes	No
134218	8x 42	Standard	Center	Porro	BaK-4	Multi	410 / 137	18 / 5.5	5.25	17	Twist-Up	27.2 / 771	Yes	Yes
134211	10x 42	Standard	Center	Porro	BaK-4	Multi	341 / 114	15 / 4.6	4.2	16	Twist-Up	27 / 765	Yes	Yes
134212	12x 42	Standard	Center	Porro	BaK-4	Multi	267 / 89	15 / 4.6	3.5	15	Twist-Up	27 / 765	Yes	Yes
157050	7x 50	Standard	Center	Porro	BaK-4	Multi	352 / 117	29.5 / 9	7.1	20	Twist-Up	34.5 / 980	Yes	Yes
138005	8x 25	Compact	Center	Roof	BaK-4	Multi	429 / 143	15 / 4.6	3.2	13.5	Twist-Up	10.23 / 290	Yes	No
130105	10x 25	Compact	Center	Roof	BaK-4	Multi	342 / 114	15 / 4.6	2.5	12	Twist-Up	10.23 / 290	Yes	No
132105	12x 25	Compact	Center	Roof	BaK-4	Multi	273 / 91	20 / 6	2.1	9	Twist-Up	9.88 / 280	Yes	No
150126	10x 26	Compact	Center	Porro	BaK-4	Multi	285 / 95	8.5 / 2.6	2.6	13.3	Twist-Up	13.6 / 385	Yes	No



PROUD USA COMPANY

UPGRADE YOUR SEATS.

Put yourself in the middle of the action from anywhere in the stands with our Spectator Series® binoculars. With an extra-wide field of view and a PermaFocus® design (except model 1751030) that never need adjustment to be razor-sharp, you'll never miss a second, inch or yard of the action. See it all through bright, clear multi-coated optics and pass 'em around - their rugged, lightweight housings are built for the long haul. Our Dual Power model allows you to change from a wide field of view at 5x to a closeup at 10x without ever taking your eyes off the prize. Also choose from our pocket-sized compact or two full-size models for even greater coverage area and brightness.



4x 30mm 130521

*Ideal fast-paced sports binocular
featuring lower power for widest possible view.*

FEATURES

- Multi-coated optics for superior light transmission and brightness ▶
- 4x 30 model is fully coated ▶ Wide field of view ▶ Long eye relief ▶
- Non-slip rubber armor absorbs shock while providing a firm grip

TWICE THE VIEWING AREA



Standard View

Xtra-Wide® View

(Xtra-Wide® View model 130521 only)



5-10x 25mm Dual Power 1751030

Change from wide 5x view to a closeup at 10x without taking your eye off the action.



MODEL	MAGNIFICATION X OBJ. LENS	SIZE CLASS	FOCUS SYSTEM	PRISM SYSTEM	PRISM GLASS	LENS COATING	FIELD OF VIEW ft. @ 1000 yds. / m @ 1000m	CLOSE FOCUS (ft. / m)	EXT. PUPIL (mm)	EYE RELIEF (mm)	EYECUPS	WEIGHT (oz. / g)	WATER/FOG PROOF	ADAPT TO TRIPOD
130521	4x 30	Mid-Size	Free	N/A	N/A	Fully	900 / 300	*	7.5	10	Fold-Down	14.5 / 411	No	No
1751030	5x-10x 25	Mid-Size	Center	Porro	Bak-4	Multi	585 / 195 310 / 103	7.5 / 2.3	5 / 2.5	15.2	Twist-Up	19.2 / 544	No	No

* Note: Focus-free models are designed for viewing distant subjects. The close-focus limit is subjective and dependent on the user's eyesight.



PROUD USA COMPANY

PERMANENTLY SHARP AND CLEAR. NO MATTER IF YOU ARE.

Lose your focus and some of life's finest opportunities can pass you by.

This hard-earned lesson drove the creation of our PermaFocus® binocular series. Simply raise them to your eyes and catch the action instantly with stunning clarity - no adjustment necessary. Their unique focus-free feature keeps them dialed in for instantaneous viewing at virtually any distance. They're perfect for fast action at sporting events, nature observation and winter days when gloves would hinder the use of standard-focus binoculars. Precision-crafted, fully coated optics offer bright, crisp images. Magnify life instantly with our PermaFocus series.

FEATURES

Fully coated optics for superior light transmission and brightness ▶ Unique focus-free feature stays in focus at most viewing distances ▶ Non-slip rubber armor absorbs shock while providing a firm grip



8x 25mm 170825

A convenient compact for quick viewing and simple carrying.



7x 35mm 173507

Mid-sized for good magnification at mid-range.



7x 50mm 175007 10x 50mm 175010 12x 50mm 175012

Full-size and full-featured for increased brightness at long distances.



10x 42mm 171043

A slim roof-prism design offering a wide field of view.



8x 32mm 170832
10x 32mm 171032

Mid-size, roof-prism binoculars.

MODEL	MAGNIFICATION X OBJ. LENS	SIZE CLASS	FOCUS SYSTEM	PRISM SYSTEM	PRISM GLASS	LENS COATING	FIELD OF VIEW ft. @ 1000 yds. / m @ 1000m	CLOSE FOCUS (ft. / m)	EXIT PUPIL (mm)	EYE RELIEF (mm)	EYECUPS	WEIGHT (oz. / g)	WATER/ FOG PROOF	ADAPT TO TRIPUD
170825	8x 25	Compact	Free	Porro	BK-7	Fully	341 / 113	*	3.1	12	Fold-Down	9.3 / 263	No	No
171043	10x 42	Standard	Free	Roof	BK-7	Fully	305 / 102	*	4.2	14	Twist-Up	18.8 / 533	No	No
173507	7x 35	Standard	Free	Porro	BK-7	Fully	578 / 193	*	5.0	12	Fold-Down	22.5 / 638	No	Yes
175007	7x 50	Standard	Free	Porro	BK-7	Fully	372 / 124	*	7.1	20	Fold-Down	27.2 / 771	No	Yes
175010	10x 50	Standard	Free	Porro	BK-7	Fully	393 / 131	*	5.0	14	Fold-Down	31 / 879	No	Yes
175012	12x 50	Standard	Free	Porro	BK-7	Fully	265 / 88	*	4.2	9	Fold-Down	31 / 879	No	Yes
170832	8x 32	Mid-Size	Free	Roof	BK-7	Fully	382 / 127	*	4.0	13	Twist-Up	14.1 / 400	No	No
171032	10x 32	Mid-Size	Free	Roof	BK-7	Fully	294 / 98	*	3.2	12	Twist-Up	14.1 / 400	No	No

* Note: Focus-free models are designed for viewing distant subjects. The close-focus limit is subjective and dependent on the user's eyesight.



PROUD USA COMPANY

THE WORLD'S BEST-SELLING LINE OF BINOCULARS.

The #1 choice for millions of folks.

PowerView.® The powerhouse of the binocular industry, and the most trusted optics in the world for a simple reason - they're the optimum combination of performance and value for any pursuit. Features such as their soft-touch grip pads put them a notch above the rest, and everything looks better through bright, clear, fully coated optics. And we purposely crafted these binos with a lightweight, streamlined design so you never have to go without them. The ultimate go-anywhere, do-anything lineup, PowerView features a wide variety of magnifications, styles and sizes to accommodate everything from an extended backcountry hike to a short run to the concert hall.



10x 32mm 131032
12x 32mm 131232
16x 32mm 131632

High-power compacts with extra light-gathering ability.



8x 21mm 132514

A foldable compact that fits inside a pocket or purse.



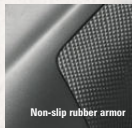
10x 25mm 132516
10x 25mm 132517 (camo)
12x 25mm 131225

Wide field of view with 10x magnification makes these great long-range compacts.



FEATURES

Fully or multi-coated optics for superior light transmission and brightness ▶ Non-slip rubber armor absorbs shock while providing a firm grip ▶ Contemporary styling



Non-slip rubber armor



8x 42mm 140842
10x 42mm 141042
8x 32mm 140832
10x 32mm 141032

High-magnification, full-size viewing
ideal for long-range observation.



10x 42mm
141043 (camo)

High-magnification,
full-size viewing ideal for
long-range observation.



8-16x 40mm
Zoom 1481640

Binoculars of unmatched versatility.
Choose 8x for maximum field
of view, then zoom all the way to 16x
for an ultra-detailed look at your subject.



MODEL	MAGNIFICATION X OBJ. LENS	SIZE CLASS	FOCUS SYSTEM	PRISM SYSTEM	PRISM GLASS	LENS COATING	FIELD OF VIEW ft. @ 1000 yds. / m @ 1000m	CLOSE FOCUS (ft. / m)	EXIT PUPIL (mm)	EYE RELIEF (mm)	EYECUPS	WEIGHT (oz. / g)	WATER/ FOG PROOF	ADAPT TO TRUPPO
132514	8x 21	Compact	Center	Roof	BK-7	Fully	378 / 126	21 / 6.4	2.6	10	Fold-Down	7 / 195	No	No
132516	10x 25	Compact	Center	Roof	BK-7	Fully	300 / 100	21 / 6.4	2.5	10	Fold-Down	8.5 / 242	No	No
132517	10x 25	Compact	Center	Roof	BK-7	Fully	300 / 100	21 / 6.4	2.5	10	Fold-Down	8.5 / 242	No	No
131225	12x 25	Compact	Center	Roof	BK-7	Fully	240 / 80	25 / 7.6	2.1	10	Fold-Down	11.3 / 320	No	No
131032	10x 32	Mid-Size	Center	Roof	BK-7	Fully	265 / 88	25 / 7.6	3.2	12	Fold-Down	12.4 / 353	No	No
131232	12x 32	Mid-Size	Center	Roof	BK-7	Fully	240 / 80	35 / 10.7	2.6	12	Fold-Down	11.5 / 325	No	No
131632	16x 32	Mid-Size	Center	Roof	BK-7	Fully	185 / 62	20 / 6	2.0	12	Fold-Down	12.4 / 353	No	No
140832	8x 32	Mid-Size	Center	Roof	BK-7	Multi	367 / 122	20 / 6	4	18.8	Twist-Up	21.0 / 596	No	Yes
141032	10x 32	Mid-Size	Center	Roof	BK-7	Multi	293 / 98	11 / 3.4	3.2	15.5	Twist-Up	20.4 / 578	No	Yes
140842	8x 42	Standard	Center	Roof	BK-7	Multi	369 / 123	11.5 / 3.5	5.25	17.6	Twist-Up	25.2 / 716	No	Yes
141042	10x 42	Standard	Center	Roof	BK-7	Multi	293 / 98	23 / 7	4.2	15	Twist-Up	23.7 / 673	No	Yes
141043	10x 42	Standard	Center	Roof	BK-7	Multi	293 / 98	23 / 7	4.2	15	Twist-Up	24.4 / 692	No	Yes
1481640	8-16x 40	Standard	Center	Roof	BK-7	Multi	252 / 85(8x), 168 / 56(16x)	16 / 4.9	5 / 2.5	15	Twist-Up	24.9 / 707	No	Yes



PROUD USA COMPANY

A MODEL FOR EVERY ADVENTURE.

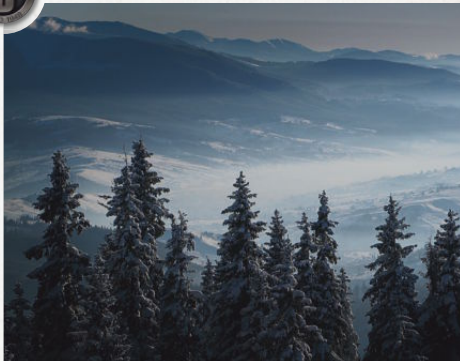
High-quality, all-around top performers.

There's a model for every adventure. At prices that don't make owning one of each out of the question. Our porro-prism Powerview® series is a combination of precision optics, durability and versatile styling that will make the most of your time outdoors. One look and it's clear: you simply can't do any better for the money.

7-15x 25mm

139755

Porro-prism compact
featuring a 7x to
15x zoom.



10x 50mm

131055 (camo)

FEATURES

Multi-coated optics on all full-size models for superior light transmission and brightness ▶ Fully coated optics on all compacts ▶ Non-slip rubber armor absorbs shock while providing a firm grip ▶ Contemporary styling

8x 25mm

139825

Porro-prism compact with a clear,
wide field of view.





7x 50mm 131750
10x 50mm 131056
12x 50mm 131250
16x 50mm 131650
20x 50mm 132050

Popular magnifications, great for examining detail at long range.



MODEL	MAGNIFICATION X OBJ. LENS	SIZE CLASS	FOCUS SYSTEM	PRISM SYSTEM	PRISM GLASS	LENS COATING	FIELD OF VIEW ft. @ 1000 yds. / m @ 1000m	CLOSE FOCUS (ft. / m)	EXIT PUPIL (mm)	EYE RELIEF (mm)	EYECUPS	WEIGHT (oz. / g)	WATER/ FOG PROOF	ADAPT TO TRIPPOD
139825	8x 25	Compact	Center	Porro	BK-7	Fully	340 / 113	6 / 1.8	3.1	12	Fold-Down	9.1 / 260	No	No
139755	7-15x 25	Compact	Center	Porro	BK-7	Fully	262 / 87 @ 7x 183 / 61 @ 15x	6 / 1.8	3.5 @ 7x 1.6 @ 15x	12	Fold-Down	11 / 315	No	No
131750	7x 50	Standard	InstaFocus®	Porro	BK-7	Multi	341 / 114	20 / 6	5.0	10	Fold-Down	25 / 709	No	Yes
131056	10x 50	Standard	InstaFocus®	Porro	BK-7	Multi	341 / 114	20 / 6	5.0	10	Fold-Down	25 / 709	No	Yes
131055	10x 50	Standard	InstaFocus®	Porro	BK-7	Multi	341 / 114	20 / 6	5.0	10	Fold-Down	25 / 709	No	Yes
131250	12x 50	Standard	InstaFocus®	Porro	BK-7	Multi	267 / 88	40 / 12.2	4.2	7	Fold-Down	29.8 / 845	No	Yes
131650	16x 50	Standard	InstaFocus®	Porro	BK-7	Multi	204 / 61	35 / 10.7	3.1	10	Fold-Down	29.3 / 832	No	Yes
132050	20x 50	Standard	InstaFocus®	Porro	BK-7	Multi	170 / 57	45 / 13.7	2.5	9	Fold-Down	30 / 851	No	Yes



PROUD USA COMPANY

MONEY CAN'T BUY CONTENTMENT, BUT IT ONLY TAKES A LITTLE TO KEEP YOU FOCUSED ON WHAT'S IMPORTANT.

These value-priced, porro-prism binoculars make a magnified experience attainable for virtually anyone. Fully coated optics deliver bright, clear images, and rubber-armored housings make them tough and dependable.

FEATURES

Fully coated optics for superior light transmission ▶ InstaFocus® system for fast focus on moving targets ▶ Non-slip rubber grip pads for a secure hold in all weather conditions

10x 50mm 133450

A great high-powered, long-range binocular with a 50mm objective for a bright, clear view.



7x 35mm 133410

An ideal all-around binocular with a wide field of view and plenty of power.



10-30x 50mm 211350

Vari-Zoom



MODEL	MAGNIFICATION X OBJ LENS	SIZE CLASS	FOCUS SYSTEM	PRISM SYSTEM	PRISM CLASS	LENS COATING	FIELD OF VIEW (ft. @ 1000yds. / m @ 1000m)	CLOSE FOCUS (ft. / m)	EXIT PUPIL (mm)	EYE RELIEF (mm)	EYECUPS	WEIGHT (oz. / g)	WATER/FOG PROOF	ADAPT TO TRIPOD
133410	7x 35	Standard	InstaFocus®	Porro	BK-7	Fully	420 / 140	20 / 6	5	12	Fold-Down	21 / 595	No	No
133450	10x 50	Standard	InstaFocus®	Porro	BK-7	Fully	300 / 100	25 / 7.6	5	9	Fold-Down	27 / 765	No	No
211350	10-30x 50	Standard	Center	Porro	BK-7	Fully	150 / 50 @ 10x / 100 / 33 @ 30x	25 / 7.6	5 @ 10x / 1.6 @ 30x	9	Fold-Down	24 / 680	No	No

Binocular Tripod Adapter 161002CM

Mounts any tripod-ready binocular to any standard tripod. Recommended for prolonged observation with any binocular of 10x or more. (Except models 232810, 233208 et 235012).



Binocular Universal Tripod Adapter 191150

Compatible with any binocular for prolonged observation.



Binocular Shoulder Harness 109998CM

Our elastic binocular harness will free up your hands for other important jobs. It comes equipped with a leather harness patch, handy quick-attach loops and metal split rings, plus a micro fiber lens cleaning cloth.



Deluxe Bino Harness 19125C

A carry solution of unparalleled comfort and performance. Our Deluxe Bino Harness keeps the weight off your neck and keeps your optics front and center no matter where the hunt takes you.



Optic Lens Cleaning Kit 109992CM

Everything you need to keep lenses free of dust and fog. Includes a retractable brush, bottle of lens-cleaning solution and a microfiber cloth.

BINOCULAR. A binocular consists of two optical systems that are joined by a hinge and (typically) share a common focusing mechanism. The ability to create an image for both eyes simultaneously provides a realistic perception of depth. Binoculars are available in a great variety of sizes, magnifying powers and features to suit any purpose or preference.

Coated Optics

Lens surface coatings reduce light loss and glare due to reflection for a brighter, higher-contrast image with less eye strain.

Types of Lens Coatings

Coated: A single layer on at least one lens surface.

Fully Coated: A single layer on all air-to-glass surfaces.

Multi-Coated: Multiple layers on at least one lens surface.

Fully Multi-Coated: All air-to-glass surfaces feature multiple layers of anti-reflective coating. Fully multi-coated optical systems deliver the brightest, highest-contrast images with the least amount of eye strain because only a very small percentage of light is lost before it reaches the viewer's eye.



Diopter Adjustment

A fine-focus adjustment ring usually provided around one eyepiece to accommodate for vision differences between the right and left eyes.

ED Prime Glass

ED Prime Extra-Low Dispersion glass delivers amazing color resolution and contrast, and virtually eliminates chromatic aberration and color-fringing to bring out the most distinct details possible in low-light conditions.



Enviro-Friendly

Trophy® XLT and Natureview® binoculars are made with enviro-friendly materials. That means we use no lead in the glass lenses or prisms, no PVC in the binocular case, no PAHs in the binocular itself and 100% recycled paper board packaging. Now you can see the outdoors with stunning clarity, and do your part to keep it beautiful.



Exit Pupil

Refers to the size of the circle of light visible at the eyepiece of a binocular. The larger the exit pupil, the brighter the image. To determine the size, divide the objective lens diameter by the power (an 8x32 model has an exit pupil of 4mm).

Eye Relief

The distance a binocular can be held away from the eye and still present the full field of view. Extended or long eye relief reduces eyestrain and is ideal for eyeglass wearers.

Field of View (F.O.V.)

The side-to-side measurement of the circular viewing field or subject area. It is defined by the width in feet or meters of the area visible at 1,000 yards or meters. A wide-angle binocular features a wide field of view and is better for following action. Generally, the higher the magnification, the narrower the field of view.



Magnification (Power)

Binoculars are often referred to by two numbers separated by an "x." For example: 8x32. The first number is the power, or magnification, of the binocular. With an 8x32 binocular, the object being viewed appears to be eight times closer than you would see it with the unaided eye.



Objective Lens

The second number in the formula (8x32mm) is the diameter of the objective or front lens measured in millimeters. The larger the objective lens, the more light that enters the binocular and the brighter the image.

Porro Prism System

In porro prism binoculars, the objective or front lens is offset from the eyepiece. Porro prism binoculars provide greater depth perception and generally offer a wider field of view.



Roof Prism System

In roof prism binoculars, the prisms overlap closely, allowing the objective lenses to line up directly with the eyepiece. The result is a slim, streamlined shape in which the lenses and prisms are in a straight line. Roof-prism binoculars are less bulky and more rugged than an equivalent porro model.



Prism Glass

Most optical prisms are made from borosilicate (BK-7) glass or barium crown (BaK-4) glass. BaK-4 is the higher-quality glass, yielding brighter images and high edge-to-edge sharpness.

RainGuard® HD

With RainGuard® HD, Bushnell's permanent, patented, hydrophobic and oleophobic lens coating, a foggy view is no longer an issue. This unique coating acts on water drops from rain, snow, sleet and even your own breath, reducing them into much smaller droplets. These tiny drops scatter less light, ensuring a clearer, brighter view.



Resolution

Resolution, or definition, is the ability of a binocular to distinguish fine detail and retain clarity.

PC-3® Phase Coating

Found on the best roof-prism binoculars, this chemical coating is applied to the prisms to enhance resolution and contrast. Would not provide an advantage on porro-prism models.



Ultra Wide Band Coating

An anti-reflection coating process that is customized for every lens element in the optical path, in order to allow the maximum amount of light from the front glass all the way back to the eyepiece. The result? Optimum brightness and true color across the light spectrum.



Waterproof/Fogproof

Some binoculars are O-ring sealed and nitrogen purged for total waterproof and fogproof protection. These models can withstand complete immersion in water and stay dry inside. The interior optical surfaces won't fog due to rapid temperature change or humidity.



XTR® Technology

As light passes through the many prisms and lenses of a roof-prism binocular, some light is usually lost along the way. Our exclusive new XTR technology - utilizing 60 layers of coatings on each prism - conserves, harnesses and optimizes the available light. XTR delivers an amazing 99.73% light transmission per lens for a combined light transmission of 90%, making the Bushnell Elite® series the brightest binocular in its class.





ELITE® 20-60X 80 MM

Page 34



The most advanced spotting scope family available.

Not that we doubt your ambition, but there are times when it's best to view from afar. And no one brings fur and feather to you in high-definition like Bushnell®. From the finest full-size spotting scope in the world, the Elite®, to our handy little Sentry® you can fit in a fanny pack, there is something to magnify everyone's adventure. We've spent more than six decades closing the distance with more advanced optics, components and ingredient technologies. Stand on our shoulders with a Bushnell spotting scope and enjoy the finest view on earth.

TURNING RADICAL IDEAS
INTO THE MOST BRILLIANT
VIEWS ON EARTH.

2



ELITE®

page 34



ELITE® TACTICAL

page 35



LEGEND® ULTRA HD

page 36



LEGEND ULTRA HD MONOCULAR

page 37



SPACEMASTER®

page 38



IMAGEVIEW®

page 39



TROPHY® XLT

page 40



NATUREVIEW®

page 41



SENTRY®

page 42



TRIPODS & ACCESSORIES

page 44

TERMINOLOGY

page 45



PROUD USA COMPANY

FORGET WHAT YOU'VE SEEN. NOTHING COMPARES TO THE WORLD THROUGH ELITE.®

Enjoy the view from the peak of optical achievement. An Elite® spotting scope gives you the advantage from the world's high point of brightness, clarity and edge-to-edge detail, whether you're birding at sea level or hunting above timberline. ED Prime Extra-Low Dispersion glass, premium BaK-4 prisms and fully multi-coated lenses deliver flawless color fidelity, ultra-crisp images and optimum light transmission. Waterproof construction and our RainGuard® HD coating keep things clear. Save yourself some legwork and start at the top.

DIGISCOPING CAPABILITIES (ELITE® model only)

Bushnell® tripod

784040

Sold separately.



80mm ELITE® Spotting Scope Accessories Camera Adapter 780050

Adapts digital/film SLR cameras to the Elite® 80mm scopes for high quality, long range nature and wildlife photography.¹

Equivalent Focal Length (w/35mm SLR): 1000mm

Effective Aperture: Ø113.3

Approximate Magnification*: 20-30x

¹ T-mount adapter ring required to attach camera body

² Magnification dependent on digital camera sensor size (APS or Full Frame)



20-60x 80mm

784580

*Our finest scope with a
45° eyepiece.*



ELITE

Inspired by a combined commitment to heritage and innovation to create the sharpest, clearest and brightest optics available today.

FEATURES

ED Prime Extra-Low Dispersion glass ▶ RainGuard® HD ▶
100% waterproof ▶ Armored ▶ 20-60x zoom eyepiece ▶
BaK-4 prisms ▶ Protective case ▶ Retractable sunshade ▶
Camera adaptable



New Twist-up eyepiece



MODEL	MAGNIFICATION	OBJECTIVE (mm)	PRISM GLASS	RAINGUARD® HD	LENS COATING	FIELD OF VIEW (ft. @ 1000 yds. / m. @ 1000m)	EXIT PUPIL (mm)	CLOSE FOCUS (ft. / m)	WEIGHT (oz. / g)	LENGTH (in. / mm)	WATERPROOF/ FOGPROOF	EYE RELIEF (mm)
784580	20-60x	80	BaK-4	Yes	Fully Multi	98/32 @ 20x / 50/16.5 @ 60x	4.1 @ 20x / 1.4 @ 60x	15 / 5	53 / 1484	17 / 432	Yes	18

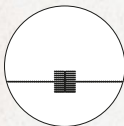


Elite Tactical LMSS 8-40x 60mm 780840

Extraordinary close-up views from extreme ranges. 5x magnification ratio in a lightweight, tough-as-nails package. Features ED prime glass for incredibly vivid details and fully multi-coated optics for the brightest images.

Elite Tactical LMSS w/ Reticle 8-40x 60 mm 780841H

Extraordinary close-up views from extreme ranges. 5x magnification ratio in a lightweight, tough-as-nails package. Features ED prime glass for incredibly vivid details and fully multi-coated optics for the brightest images.



Heavy Duty Spotting Scope Adapter

081003

For use with SLR camera lenses and camcorder/smart phone applications. It is recommended that a 50mm SLR camera lens be used. Finish: Matte. Picatinny rail. Weight - 2 oz. / 56g.



THE PEAK OF OPTICAL ACHIEVEMENT IN TACTICAL SPOTTING SCOPES.

Elite spotting scopes give you the advantage from the world's high point of brightness, clarity and edge-to-edge detail. ED Prime Extra-Low Dispersion glass, premium BaK-4 prisms and fully multi-coated lenses deliver flawless color fidelity, ultra-crisp images and optimum light transmission. And this year, we're putting its peerless performance into the hands of all the those who preserve our way of life with the Elite Tactical LMSS. From high peaks and valleys, to the unforgiving field of battle, nothing comes close to Elite.



FEATURES

- ED Prime Extra-Low Dispersion glass ▶ 8-40x zoom eyepiece ▶
- Rainguard HD ▶ Fully multi-coated ▶ Waterproof ▶ Twist-up eyecups ▶
- Rubber-armored aluminium body ▶ First Focal Plane H32 Reticle*

*Except Model 780840



MODEL	MAGNIFICATION	OBJECTIVE (mm)	PRISM GLASS	RAINGUARD® HD	LENS COATING	FIELD OF VIEW (ft./1000yds. / m./1000m)	EXIT PUPIL (mm)	CLOSE FOCUS (ft. / m)	WEIGHT (oz. / g)	LENGTH (in. / mm)	WATERPROOF/FOGPROOF	EYE RELIEF (mm)
780840	8-40x	60	BaK-4	Yes	Fully Multi	50°16@40x / 250°83@8x	1.5@40x / 5@8x	30 / 10	37.1 / 1053	12.7 / 323	Yes	30
780841H	8-40x	60	BaK-4	Yes	Fully Multi	50°16@40x / 250°83@8x	1.5@40x / 5@8x	30 / 10	37.1 / 1053	12.7 / 323	Yes	30



PROUD USA COMPANY

EVERYTHING YOU'VE EVER WANTED IN A SPOTTING SCOPE.

Built on the same philosophy as our Legend® Ultra•HD binoculars, the Legend® Ultra•HD spotting scope delivers exceptional field performance at a price most avid enthusiasts can afford. The ED Prime Extra Low Dispersion glass, fully multi-coated optics and premium BaK-4 prisms capture the moment with vivid clarity and contrast, even in low-light conditions. Stacked, dual-focus controls permit you to make both rapid and fine-tuning adjustments. Lenses are protected by our new ultra-effective RainGuard® HD for the clearest possible view in the face of foul weather or condensation from your own misguided breath.

FEATURES

ED Prime Extra-Low Dispersion glass ▶ 2-speed dual focus controls ▶
RainGuard® HD water-repellent lens coating ▶ 100% waterproof ▶
BaK-4 prisms ▶ Fully multi-coated optics ▶ Compact porro prism
design ▶ Long eye relief ▶ Close focusing ▶ Zoom eyepiece ▶
Soft case ▶ Small tripod included (60mm model only)



NEW
15-45x 60mm 785460ED

Mid-size model covering the popular 15-45x power range, with the clarity of ED glass and dual speed controls for fast and precise focusing.



Digiscoping bracket
(page 44)



20-60x 80mm
786081ED

Precision optics with a powerful magnification range, wrapped in a waterproof, rubber-armored housing.

MODEL	MAGNIFICATION	OBJECTIVE	RAIN-GUARD® HD	LENS COATING	FIELD OF VIEW (ft. @ 1000 yds. / m. @ 1000m)	EXIT PUPIL (mm)	CLOSE FOCUS (ft. / m)	WEIGHT (oz. / g)	LENGTH (in. / mm)	WATERPROOF/ FOGPROOF	OTHER EYEPieces AVAILABLE	EYE RELIEF (mm)
*785460ED	15-45x	60	Yes	Fully Multi	140/46.6@15x / 63/23@45x	4.0@15x / 1.3@45x	18 / 5.5	4.4 / 1145	11.1 / 282	Yes	No	20
786081ED	20-60x	80	Yes	Fully Multi	110/37@20x / 51/17@60x	4.0@20x / 1.3@60x	25 / 8	80.1 / 2300	16.5 / 419	Yes	No	18

* NEW FOR 2014.

Legend Ultra HD Monocular 191142

At 10x magnification, this sleek, high-powered viewing companion will go anywhere you can and is ideal for all-around use.



FEATURES

ED Prime glass ▶ Ultra Wide Band Coating ▶
RainGuard® HD ▶ Waterproof/fogproof ▶
Fully multi-coated ▶ BaK-4 prisms ▶
Twist-up eyecup ▶ Picatinny rail mount ▶
Mil-Hash reticle (model 191144)



WHEN THERE'S NO ROOM IN YOUR PACK FOR COMPROMISE.

Now you can travel light without sacrificing true excellence in imagery. Our new Legend® Ultra•HD Monocular incorporates the features of our world-famous Legend Ultra•HD binoculars into an ultra-streamlined platform that easily tucks in the pocket of a pack or the console of your vehicle. Premium components like ED Prime glass, PC-3® Phase-Coated prisms and fully multi-coated optics deliver bright, clear views from edge to edge. Perhaps the finest monocular ever built, it can be handheld or mounted to a tripod for more stability. Options include a Mil-Hash reticle for tactical, law enforcement and other long-range shooting applications.

The built-in picatinny rail accepts a wide range of accessories. Save space and sacrifice nothing with our Legend® Ultra•HD Monocular.



Legend Ultra HD Monocular 191144 (Tactical)

Built-in Mil-Hash reticle aids in distance estimation, compensating for bullet trajectory and speeds up the zeroing process.

MODEL	MAGNIFICATION	OBJECTIVE (mm)	RAINGUARD® HD	LENS COATING	FIELD OF VIEW (ft. @ 1000 yds. / m @ 100m)	EXIT PUPIL (mm)	CLOSE FOCUS (ft. / m)	WEIGHT (oz. / g)	LENGTH (ft. / mm)	WATERPROOF/ FOGPROOF	EYE RELIEF (mm)
191142	10x	42	Yes	Fully Multi	340 / 113	4.2	6.5 / 1.9	13.2 / 374	5.4 / 137	Yes	15.2
191144	10x	42	Yes	Fully Multi	340 / 113	4.2	6.5 / 1.9	13.2 / 374	5.4 / 137	Yes	15.2



PROUD USA COMPANY

A COLLAPSIBLE SCOPE GUARANTEED TO EXPAND YOUR HORIZONS.

Every intimate detail, no weighty commitment.

With a telescoping design that packs down ultra-small, this Spacemaster® is perfect for those restless wandering types looking to see all nature's splendor without the full size and weight of a standard spotting scope. Fully coated optics and a 15-45x zoom range offer an ideal combination of optical performance, versatility and value. The included hard case comes with a "scope glove" for handheld observation and a window mount for steady viewing from your vehicle.


15-45x 50mm

787345

Innovative collapsible design with a convenient 45° eyepiece.

FEATURES

Compact design ▶ Fully coated optics ▶ 15-45x zoom ▶ Compact tripod ▶ Car window mount ▶ Aluminum-frame hard case and soft case ▶ Scope glove ▶ Bonus 25x eyepiece



The Bushnell® collapsible spotting scope includes an aluminum-framed hard case, a soft case and an exclusive "scope glove" that wraps around your scope for easier hand holding. A window mount is also included for steady viewing from your car.

MODEL	MAGNIFICATION	OBJECTIVE (mm)	FIELD OF VIEW (ft. @ 1000 yds. / m @ 1000m)	EXIT PUPIL (mm)	CLOSE FOCUS (ft. / m)	WEIGHT (oz. / g)	LENGTH (in. / mm)	OTHER EYEPIECES AVAILABLE	EYE RELIEF (mm)
787345	15-45x, 25x	50	52/17@45x / 113/38@15x, 110/37@25x	3.3@15x / 1.1@45x / 2.0@25x	11 / 3.3	22.8 / 646	8 / 203.2	Included (25x)	14

WE WON'T TELL YOU WHAT A PICTURE'S WORTH.

But capture a moment of perfection and you just may think our ImageView® spotting scope is priceless. It's equal parts spotting scope and digital camera, and an instant pardon when you find yourself at a loss for words. The unique design fully integrates the camera with the scope's bright, multi-coated primary optics - once you have the scope focused, just switch over to the camera's 2.5"/6.4 cm flip-up color LCD and capture flawless 5MP photos of your subject. The generous 32GB SD card capacity lets you take an entire trip's worth of high resolution digital images or even video clips back home to remember the moments you save.

*Actual photo taken
with ImageView®
Spotting Scope.*

FEATURES

15-45x zoom eyepiece (22x camera magnification) ▶ 70mm objective lens ▶ Exit pupil (mm): 4.6 @15x / 1.5 @45x ▶ 5MP resolution ▶ Switch easily from direct observation via zoom eyepiece to the digital camera's image on the large LCD display ▶ Multi-coated optics ▶ Video capable ▶ 2.5"/6.4 cm flip-up LCD ▶ 4x digital zoom ▶ SD card slot (max 32 GB) ▶ USB port ▶ Includes table tripod, remote shutter cable and soft case ▶ Requires 2 AA batteries



15-45x 70mm
111545

*Digital imaging spotting scope
with 5 megapixel image capture
and flip-up color LCD screen.*

MODEL	MAGNIFICATION	OBJECTIVE (mm)	LENS COATING	FIELD OF VIEW (ft. @1000yds. / m @1000m)	EXIT PUPIL (mm)	CLOSE FOCUS (ft. / m)	WEIGHT (oz. / g)	LENGTH (in. / mm)	WATERPROOF/ FOGPROOF	EYE RELIEF (mm)
111545	15-45x	70	Multi	121.5/40.5 @15x / 52.6/17.5 @45x	4.6 @15x / 1.5 @45x	26 / 7.9	25.4 / 711	11.6 / 295	No	11



PROUD USA COMPANY

TOUGH, BRIGHT, CLEAR AND BORN TO HUNT.

Sounds like you and the Trophy® were made for one another. Our optical masterminds created the ultimate spotting scope for extreme conditions. This rugged, rubber-armored performer is 100% waterproof and magnifies every minute of legal time with premium fully multi-coated optics. It's tough, bright and ready to go anywhere you are. Looks like you finally found a dependable hunting partner.

FEATURES

Porro-prism design ▶ Premium fully multi-coated optics ▶ 100% waterproof rubber armor construction ▶ Twist up eyecups ▶ Attached objective caps ▶ Compact tripod ▶ Premium hard-side case ▶ Compact soft-side case



Premium hard-side and compact soft-side carrying cases included.



15-45x 50mm

785015

Rugged, compact and 100% waterproof for high-country hunting, backpacking and adventure travel.



20-60x 65mm

786520E

Extra power for extra range, this is the ultimate portable, all-weather spotting scope for trophy hunting and birding.



20-60x 65mm

786520

65mm model also available with a 45 degree eyepiece.

MODEL	MAGNIFICATION	OBJECTIVE (mm)	FIELD OF VIEW (ft. @1000yds. / m @100m)	EXIT PUPIL (mm)	CLOSE FOCUS (ft. / m)	WEIGHT (oz. / g)	LENGTH (in. / mm)	EYE RELIEF (mm)
785015	15-45x	50	150/50 @15x / 76/25 @45x	3.3 @15x / 1.1 @45x	32.8 / 10	31.7 / 900	13.2 / 335	18
786520E	20-60x	65	110/35 @20x / 55/16.3 @60x	3.25 @20x / 1.1 @60x	32.8 / 10	42.3 / 1200	13.4 / 340	18
786520	20-60x	65	110/35 @20x / 55/16.3 @60x	3.25 @20x / 1.1 @60x	32.8 / 10	42.3 / 1200	13.4 / 340	18



NEW
20-60x 65mm
786065



FEATURES

BaK-4 prisms ▶ Fully multi-coated optics ▶ Waterproof/fogproof ▶ Lead-free glass ▶ Twist-up eyepiece ▶ Includes compact tripod, soft-sided and water-resistant hardcase

NEW
15-45x 50mm
784550

Includes a soft-sided and water resistant hardcase.



PRECISION-ENGINEERED VERSATILITY.

The NatureView® will take on virtually any outdoor pursuit – from backyard birding to long-range nature observation. But it's still crafted with our singleminded dedication to superior optical performance.

The NatureView features a wide field of view, extra-long eye relief and fully coated optics, so your focus stays sharp. Even if you can't decide where you really want to be.



Lead-free glass means we use no lead in the glass lenses or prisms. By using environmentally materials, we're not only helping you see the outdoors in stunning clarity, we're doing our part to keep them beautiful.



MODEL	MAGNIFICATION	OBJECTIVE (mm)	LENS COATING	FIELD OF VIEW (ft. @ 1000 yds. / m. @ 1000m)	EXIT PUPIL (mm)	CLOSE FOCUS (ft. / m)	WEIGHT (oz. / g)	LENGTH (in. / mm)	WATERPROOF/ FOGPROOF	OTHER EYEPIECES/ AVAILABLE	EYE RELIEF (mm)
*784550	15-45x	50	Fully-Multi	60/420@45x / 120/40@15x	3.1@15x / 1.0@45x	30 / 10	26.5 / 750	12.8 / 275	Yes	No	18
*786065	20-60x	65	Fully-Multi	50/16@60x / 110/36@20x	3.25@20x / 1.1@60x	30 / 10	35.6 / 1070	14.6 / 371	Yes	no	17

* NEW FOR 2014.



PROUD USA COMPANY

BIG ADVENTURES USUALLY REQUIRE A DOWNSIZED PACK.

Our Sentry® spotting scope is a tight little bundle of full-size brightness and clarity that will go hard and virtually anywhere. Its multi-coated optics give you great visual command of dawn and dusk conditions. And, every model is built for the long haul, with waterproof, rubber-armored housings. A premium spotting scope is one of the finer things you'll never have to go without.

FEATURES

50mm objective lens for a clear, bright image ▶
Multi-coated optics for increased light transmission ▶
100% waterproof ▶ Rubber armor absorbs shock ▶ Compact tripod for long-range viewing ▶ Car window mount, scope glove and soft-side carrying case (model 789332) ▶ Hard-side carrying case (all models)



12-36x 50mm

789332 (green)

Designed specifically for hunting applications where compact optics are a necessity. Other features include rubber armor, tripod and versatile car window mount.



Premium hard-side and compact soft-side carrying cases included.



18-36x 50mm

783718

Compact featuring 45-degree eyepiece.

Premium hard-side and compact soft-side carrying cases included.

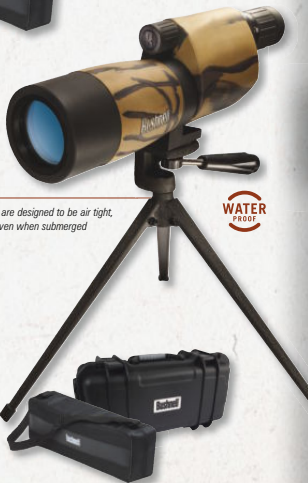
MODEL	MAGNIFICATION	OBJECTIVE (mm)	FIELD OF VIEW (ft. @ 1000 yds. / m. @ 1000m)	EXIT PUPIL (mm)	CLOSE FOCUS (ft. / m)	WEIGHT (oz. / g)	LENGTH (in. / mm)	EYE RELIEF (mm)
781838	18-36x	50	115/38 @ 18x / 75/25 @ 36x	2.8 @ 18x / 1.4 @ 36x	20 / 6	31 / 877	14.7 / 373	16
789332	12-36x	50	140/46 @ 12x / 65/21 @ 36x	3.1 @ 12x / 1.5 @ 36x	12 / 3.7	21.5 / 600	8.7 / 221	14



18-36x 50mm
783718

Our waterproof products are designed to be air tight, so moisture stays out - even when submerged in water.

Includes a soft-sided and water resistant hardcase.



18-36x 50mm
783718 (camo)

Our waterproof products are designed to be air tight, so moisture stays out - even when submerged in water.

Includes a soft-sided and water resistant hardcase.

COMPACT AND BUILT FOR A LIFETIME OF ADVENTURE.

Full-size brightness and clarity in a streamlined package. One made to easily travel with you wherever you take it - from single-day trips to weeklong adventures - all at a valuable price. The 18-36x 50mm porro-prisms offer versatile magnification ranges for any application, while the multi-coated optics deliver awesome visual command during dawn and dusk. With waterproof, fogproof housing, every model is built for the long haul.

FEATURES

50mm objective lens for a clear, bright image ▶ Multi-coated optics for increased light transmission ▶ 100% waterproof ▶ Rubber armor absorbs shock



MODEL	MAGNIFICATION	OBJECTIVE (mm)	FIELD OF VIEW (ft. @ 1000 yds. / m. @ 1000m)	EXIT PUPIL (mm)	CLOSE FOCUS (ft. / m)	WEIGHT (oz. / g)	LENGTH (in. / mm)	EYE RELIEF (mm)
783718	18-36x	50	112/38@18x / 67/25@36x	2.7@18x / 1.3@36x	14.7 / 4.5	25 / 708	12 / 304	16.5
783618	18-36x	50	112/38@18x / 67/25@36x	2.7@18x / 1.3@36x	14.7 / 4.5	25 / 708	12 / 304	16.5



PROUD USA COMPANY

Titanium Tripod 784040

Three-position leg angle adjustment, three-way pan head, two pan and tilt handles and a gearless reversible center column. Bushnell® quality with moderate carrying weight, this is the ultimate stand-up tripod. Max height: 63" / 160 cm. Weight : 1.7 kg.



Advanced Tripod 784030

This is a full-featured stand-up tripod for viewing from a platform, roadside or deck where portability is not essential. Max height: 60" / 152 cm. Weight : 2.4 kg.



Mini Tripod 784406C

Compact tripod that's easily taken along anywhere and converts to a car window mount. Max height: 8" / 20 cm.



Field Tripod 783101

Mid-height, lightweight and easily set up in the field. Our best tripod for hunters and birders on the go. Max height: 36"



Car Window Mount 784405

The traveling birder's secret. You'll see these mounts holding spotting scopes on car windows from Puget Sound to the Everglades.



Window Mount 784407C

Full-size, heavy-duty mount for larger scopes.



Compact Universal Digiscoping Bracket 780002CM

Convenient accessory clamps onto the eyepiece of most spotting scopes to attach a compact digital camera for "Digiscope" nature photography and scouting. The camera arm easily swivels aside to allow direct viewing. No other accessory required.

SPOTTING SCOPE. A high-powered, compact optical instrument used to view distant objects such as birds, wildlife, boats and landmarks, or by target shooters to verify accuracy.

Coated Optics

Coatings on lens surfaces reduce light loss and glare due to reflection, resulting in a brighter, higher-contrast image with reduced eye strain. Bushnell® spotting scopes are coated with a microscopic layer of magnesium fluoride. More coating leads to better light transmission.

Types of Lens Coatings

Coated: A single layer on at least one lens surface.

Fully Coated: A single layer on all air-to-glass surfaces.

Multi-Coated: Multiple layers on at least one lens surface.

Fully Multi-Coated: Multiple layers on all air-to-glass surfaces.

Digiscoping

Long-range photography of birds or wildlife with a digital camera mounted behind the eyepiece of a spotting scope, using an accessory bracket or camera adapter tube.

Exit Pupil

The exit pupil refers to the size of the column of light that exits a spotting scope. The larger the exit pupil, the brighter the image. To determine the size, divide the objective lens diameter by the power. Thus, a 15x 45 model has an exit pupil, or useable light, of 3mm ($45/15 = 3$).

Eye Relief

The distance a spotting scope can be held away from the eye and still present the full field of view. Extended or long eye relief reduces eye strain and is ideal for eyeglass wearers.

Field Of View (F.O.V.)

Field of view is the side-to-side measurement of the circular viewing field or subject area. It is defined by the width in feet or meters of the area visible at 1,000 yards or meters. A wide field of view is better for following fast-moving action or scanning for wildlife. Generally, the higher the magnification, the narrower the field of view.

Magnification (Power)

Spotting scopes are often referred to by numbers separated by an "x". For example: 15-45x 60. The first part is the power, or magnification, of the spotting scope. With a 15-45x 60 variable power spotting scope, the object being viewed appears to be 15-45 times closer than you would see it with the unaided eye.

Objective Lens Size

The number after the "x" in the formula (15-45x 60) is the diameter (60mm) of the objective or front lens. The larger the objective lens, the more light that enters the spotting scope and the brighter the image.

Near or Close Focus

The closest distance you can be to an object and maintain visual clarity.

Prism Glass

Most optical prisms are made from borosilicate (BK-7) glass or barium crown (BaK-4) glass. BaK-4 is the higher-quality glass, yielding brighter images and high edge-to-edge sharpness.



Prism Systems

The prism system turns what would otherwise be an upside-down image right side up.

Roof-Prism System

The prisms overlap closely, allowing the objective lenses to line up directly with the eyepiece. The result is a slim, streamlined shape in which the lenses and prisms that magnify and correct the image are in a straight line.

Porro-Prism System

The objective or front lens is offset from the eyepiece. Porro prisms provide excellent performance and generally offer a wider field of view.

RainGuard® HD

The new improved, patented, hydrophobic (water-repellent) coating on which condensation from rain, fog or snow forms in much smaller droplets than on standard coatings. Smaller droplets scatter less light, which results in increased light transmission and a clearer image.



Resolution

Resolution, or definition, is the ability of a spotting scope to distinguish fine detail and retain clarity.

ED Prime Glass

ED Prime Extra-Low Dispersion glass delivers amazing color resolution and contrast, and virtually eliminates chromatic aberration and color-fringing to bring out the most distinct details possible in low-light conditions.

PC-3® Phase Coating

Found on the best scope, this chemical coating is applied to the prisms to enhance resolution and contrast. It would not provide an advantage on porro-prism models.

Ultra Wide Band Coating

An anti-reflection coating process that is customized for every lens element in the optical path, in order to allow the maximum amount of light from the front glass all the way back to the eyepiece. The result? Optimum brightness and true color across the light spectrum.

Waterproof/Fogproof

Some scopes are sealed with O-rings and nitrogen purged for waterproof and fogproof protection. These models are able to withstand complete immersion and remain dry inside.



VOYAGER® WITH SKY TOUR™ 114X 900MM

Page 50





Pioneering innovations that unite generations. Yearning to reach the stars is a fundamental drive, and no one works harder to get you there than Bushnell®. With our advanced collection of telescopes, we're making it easier than ever before to unlock the secrets of the universe. Take a guided tour of the heavens with the fully interactive and user-friendly NorthStar® telescope. From Andromeda to Zeta Reticuli and everything in between, simply push a button and the computer-driven mount takes you to one of 20,000 celestial objects. Real Voice Output™ (English only) then explains what you're seeing in an actual human voice. At our core, we will always be dreamers and pioneers. For as long as you gaze into the night sky, Bushnell® will be there, creating memories for generations to come.

**BUSHNELL® TELESCOPES.
POINTING THE WAY IN TECHNOLOGY,
AND THE UNIVERSE.**

3

NORTHSTAR®

page 48

**VOYAGER® WITH SKY TOUR**

page 50

**TERMINOLOGY**

page 52

ACCESSORIES

page 53





PROUD USA COMPANY

GET LOST IN SPACE AND KNOW EXACTLY WHERE YOU ARE.

Tour the heavens on autopilot.

A quick push of a button guides its precision optics to any of the 20,000 celestial objects in its preprogrammed database. Find your destination on the handheld control module, enter "Go To" and the NorthStar® computer automatically centers the telescope on your target.

Amateurs can stargaze like seasoned veterans - and get an astronomy lesson at the same time. Real Voice Output™ describes what you're seeing in an actual human voice. Disarm the computer-driven location and tracking, and there's a red dot finderscope for manual star hopping. The brilliance of the NorthStar will humbly take you anywhere you want to go.

FEATURES

1.25"/31.7 mm eyepiece ▶ Remote handheld control module with Real Voice Output ▶ Power-boosting Barlow lens (reflectors only) ▶ "Go To" computerized tracking technology ▶ Red dot LED finderscope ▶ Camera adaptable ▶ Quick-release tripod ▶ Kinematic mount ▶ Accessory tray

*Note: Magnification is calculated magnification.
Low power is recommended for most viewing conditions.*



90mm x 1250mm

788890

100mm x 1300mm

788840

Style: Maksutov-Cassegrain
Mount: Kinematic





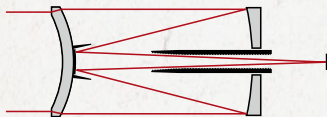
76mm x 700mm

788831

114mm x 900mm

788846

Style: Reflector
Mount: Kinematic



Light path through a Maksutov-Cassegrain

With a unique meniscus-shaped front glass lens element, the Maksutov-Cassegrain optical design has a strong heritage in astronomy. Utilizing a spherically curved front lens element in conjunction with a similarly curved primary mirror, this incredible design provides remarkably sharp images in a compact folded-light path package. The total optical system provides a focal length much longer than the actual optical tube body length to yield an awesome scope image, yet compact enough to take out in the backyard or on the road. This advanced design has typically been found only on many higher-end systems often used by professionals.



Real Voice Output™ (English only)

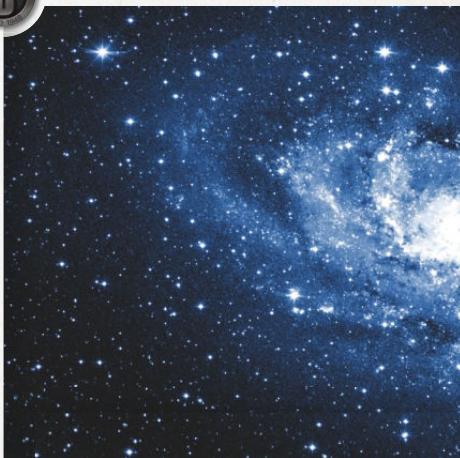
With the touch of a button this talking telescope describes the wonders of the night sky in a real human voice - an interactive and educational way to explore the heavens.

MODEL	SPECIFICATIONS	MOUNT	FOCAL LENGTH (mm)	EYEPIECES (mm)	MAGNIFICATIONS
788831	76mm x 700mm x 3," Motorized "Go To" Reflector	Kinematic Mount	700	4, 20	35, 105, 175, 525
788846	114mm x 900mm x 4.5," Motorized "Go To" Reflector	Kinematic Mount	900	4, 20	45, 135, 225, 675
788890	90mm x 1250mm, Motorized "Go To" Maksutov-Cassegrain	Kinematic Mount	1250	4, 25	50, 312.5
788840	100mm x 1300mm, Motorized "Go To" Maksutov-Cassegrain	Kinematic Mount	1300	4, 25	52, 325



THE SKY TOUR STARTS NOW.

Actually, it's for anyone with willing eyes and ears. The ultimate first telescope, our Voyager® Sky Tour™ series gives amateur stargazers a pro-grade audio tour of the night sky. Its Illuminated Smart Mount points the way as the talking handset describes constellations and planets, and keeps you engaged with entertaining facts and mythology tidbits. Keeping pace is easy with the LED red dot finderscope. It features a talking handset with choice of languages (English, French or Spanish) and backlit LED display. You're an instant expert with the Sky Tour™ series.



FEATURES

Electronic Sky Tour handset gives you a real-time audio tour of the night sky with adjustable volume and choice of language ▶ Discover constellations, mythology, amazing facts and planets ▶ Illuminated Smart Mount guides you to the objects highlighted by the handset with backlit LED display ▶ LED electronic red dot finderscope for fast positioning ▶ Large 1.25"/31.7 mm diameter eyepieces ▶ Sturdy preassembled construction ▶ The ultimate first telescope

Note: Magnification is calculated magnification. Low power is recommended for most viewing conditions.

SKY TOUR TALKING HANDSETS.

The Digital Sky Tour talking handsets included with our Voyager series telescopes are the ultimate way to learn the lay of the universe. While the voice highlights your choice of constellations, planets, mythology or amazing facts (in English, Spanish or French), the telescope's Illuminated Smart Mount lights up to get you dialed in on the celestial object. The red LED display and buttons are illuminated for easy nighttime use. It's the ultimate way to keep first-time telescope users and amateur astronomy enthusiasts engaged, entertained and learning.

THE ILLUMINATED SMART MOUNT.

The Illuminated Smart Mount lights up and points the way to the celestial object referenced by the handset. An exclusive feature of Bushnell® Voyager models.





60mm x 700mm 789961
70mm x 800mm 789971

Versatile, talking manual "Go To" refractor telescopes that give an audio tour of the universe. The mount lights up to point the way. Also perfect for land viewing.



76mm x 700mm 789931
114mm x 900mm 789946

Large reflector telescopes that guide you across the night sky with real-time audio and our Illuminated Smart Mounts. Barlow lens included.



VOYAGER® WITH SKY TOUR™ TELESCOPES

MODEL	SPECIFICATIONS	MOUNT	FOCAL LENGTH (mm)	EYEPIECES (mm)	MAGNIFICATIONS
789961	60mm x 700mm, Refractor	Illuminated Smart Mount	700	8, 12.5	56, 88
789971	70mm x 800mm, Refractor	Illuminated Smart Mount	800	8, 12.5	64, 100
789931	76mm x 700mm, Reflector	Illuminated Smart Mount	700	4, 8, 12.5	56, 88, 176
789946	114mm x 900mm, Reflector	Illuminated Smart Mount	900	4, 8, 12.5	72, 113, 226



PROUD USA COMPANY

TELESCOPE. An optical instrument used for viewing distant objects, usually in the night sky.



Barlow Lens

An auxiliary lens that increases the power by a factor. For example, a 2x Barlow doubles the magnification of the telescope.

Erecting Lens

Lens used with a refractor telescope when viewing land-based objects to correct the normally upside-down image provided by an astronomical telescope.

Finderscope

On most astronomical telescopes a lower-powered finderscope with a wider field of view lets the user quickly locate the object to be viewed and aim the high-magnification main telescope.



Focal Length

The measured light path of the optical system (tube length), typically measured in millimeters. Telescopes are listed as 114mm x 900mm or 60mm x 750mm. The second number refers to the focal length of the telescope.

Focusing Knob

Controls the rack and pinion focusing system. Permits smooth movement of the eyepiece for precise, sharp images.

Objective Lens Size (or Aperture)

The second number in the formula (114mm x 900mm) is the diameter of the objective lens or mirror in inches or millimeters. The aperture relates directly to how bright images will appear and how much detail is revealed. The larger the objective lens, the better. The size of the telescope's objective lens, or aperture, limits the amount of power that can be used effectively. As the magnification of an object increases, the brightness of the image decreases. This is because the light gathered by the telescope is being spread over a larger area. Aperture also limits the clarity of an image at increased magnification. When magnified beyond an aperture's recommended power, the image dims and becomes fuzzy.

Magnification (Power)

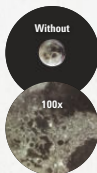
With a 100x telescope, the object being viewed appears to be 100 times closer than you would see it with the unaided eye. The magnification of a telescope is determined by dividing its focal length

by the focal length of the eyepiece being used.

For example, a 500mm telescope with a 5mm eyepiece would magnify objects 100x. Thus, a telescope can provide nearly any magnification required depending on the focal length of the eyepiece used. Since most objects in the sky are rather large, high magnification isn't necessary. Rather, a telescope that gathers lots of light is needed to make dim objects appear brighter and sharper.

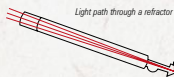
The power, or magnification, contributes to the overall size and bulk of the telescope. This is because as the power increases, so must the physical size of the objective lens.

Note: Magnification is calculated magnification. Low power is recommended for most viewing conditions.

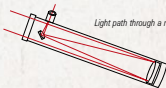


Resolution

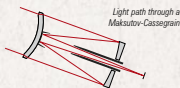
Resolution, or definition, is the ability of a telescope to distinguish fine detail and retain clarity.



Light path through a refractor



Light path through a reflector



Light path through a Maksutov-Cassegrain

Refractor: An optical system that utilizes a series of glass lenses to refract or bend the light from a distant object such that it can be focused to a point and magnified by an eyepiece. Popularized by Galileo in the 17th century, it is sometimes referred to as a Galilean refractor.

Reflector: The optical system in a reflector uses a primary mirror to reflect the light from a distant object such that it can be focused to a point and magnified by an eyepiece. Popularized by Sir Isaac Newton in the 17th century, it is sometimes referred to as a Newtonian reflector.

Maksutov-Cassegrain: A design that utilizes a spherically curved front lens element in conjunction with a similarly curved primary mirror. This configuration provides incredibly sharp images in a compact folded-light path package. The total optical system provides a focal length much longer than the actual optical tube body length.

How to choose. When selecting a telescope, consider which target objects you plan to explore, as well as your level of experience. For viewing most night sky objects, you'll want a telescope with as much aperture as possible. Keep in mind that as the size of the objective lens or mirror increases, so does the size of the telescope. So be sure to select a telescope that isn't too heavy to manage or too complicated for you to set up – especially if portability is a necessity.

Eyeieces

Lower-power eyepieces provide a wider field of view and a brighter image, making them ideal for viewing the full moon and planets, star clusters, nebulae and constellations. To focus in on the finer details of the moon and planets such as mountains, ridges and craters, use an eyepiece with higher magnification.

"Go To" Computerized Star Locator

This exciting feature utilizes an onboard computer and advanced motorized technology to allow you to quickly locate and automatically follow over 20,000 preprogrammed astronomical objects with the touch of a button. Educational descriptions of each object are also provided.

Real Voice Output™ (English only)

Talking telescope describes the night sky with the touch of a button in a real human voice – an interactive and educational way to explore the heavens.

Reflectors

Reflectors feature larger apertures for a wide range of viewing options at an affordable price. Designed with the eyepiece located at the top of the tube, reflectors are more comfortable to use for viewing night sky objects such as nebulae, the moon, planets and galaxies. Reflectors tend to be heavier and larger than refractors.



Refractors

Refractors are less affected by atmospheric instabilities, making them perfect for observing the moon and planets. Perfect for first-time and novice astronomers, small refractors are lightweight, portable and require very little maintenance. And, if you're interested in viewing both land and celestial objects, refractors are equipped for both uses.



Sky Tour™ Talking Handsets (English, French and Spanish)

The Sky Tour talking handsets included with our Voyager series telescopes are the ultimate way to learn the lay of the universe. While the voice highlights your

choice of constellations, planets, mythology or amazing facts (in English, Spanish and French), the telescope's illuminated Smart Mount lights up to get you dialed in on the celestial object. The red LED display and buttons are illuminated for easy nighttime use. It's the ultimate way to keep first-time telescope users and amateur astronomy enthusiasts engaged, entertained and learning.

Tripod

A tripod serves as a steady platform for the telescope to allow hands-free use. Because of its powerful magnification, even the slightest jiggle of the telescope is enough to move it from its target. Tripods feature three adjustable legs so the telescope can be used even when the ground is uneven.

Mounts

There are two basic types of telescope mounts, the altitude-azimuth (or altaz) and the equatorial. Altaz mounts are the easiest to maneuver and are ideal for first-time astronomers. Equipped with a manual control or motor drive that allows you to follow the movement of objects across the night sky, equatorial mounts are ideal for more experienced astronomers.



Illuminated Smart Mount

Illuminated Smart Mount

Allows precise left to right and up and down motion along with illuminated dials for navigating the night sky.



Kinematic Mount

Kinematic Mount

Undoubtedly the most precise, yet simple telescope mount in years, this high-precision altaz mount uses the principle that it requires three points to form a plane. Designed for optimum shape, the kinematic mount features three points of contact in both horizontal and vertical planes.

Accessories compatible with both "Voyager with Sky Tour" and "North Star" telescopes.

9mm Kellner Eyepiece 780101

High-quality, multi-element 1.25"/31.7mm diameter eyepiece.



25mm Kellner Eyepiece 780102

High-quality, multi-element 1.25"/31.7mm diameter eyepiece.



Erecting Prism 780103

High-quality, multi-element 1.25"/31.7mm diameter accessory that flips images upright.



Camera Adapter 780104

Use with low-power eyepiece and camera for astrophotography.



2x Barlow Lens 780105

Doubles the magnification of any 1.25"/31.7mm diameter eyepiece.





BEAR GRYLLS EDITION

Page 54-57



Bear Grylls. Bushnell®. The two toughest names in the outdoors. He's one of the world's foremost survival experts. A man who has endured, even thrived, in the most unforgiving environments on the planet. He is Bear Grylls. We're proud to welcome him into the Bushnell fold with our specialized Bear Grylls lineup. Specialized in that they are made with the never-say-die durability of their namesake, and feature the superiority we've built our name on. High performance and rugged dependability, for those most at home when Mother Nature is at her worst. Only from Bushnell.

BEAR GRYLLS BINOCULARS

page 56



BEAR GRYLLS GPS

page 57



BEAR GRYLLS SOLAR WRAP

page 57



IF IT'S NOT RELIABLE,
IT'S IRRELEVANT.

4

From sea shores and swamps to the highest peaks, Bear Grylls Edition BackTrack D-TOUR gets you there and back to tell the tale. Easy to use with more locations and logs up to 48 hours of trip data, plus trail map showing the path taken.



"THE WILD IS UNPREDICTABLE. PREPARATION IS THE BEST PRINCIPLE. FUNCTIONAL NAVIGATIONAL EQUIPMENT AND TOUGH, RELIABLE OPTICS AREN'T PERKS. THEY'RE FUNDAMENTAL."

— Bear Grylls



PROUD USA COMPANY

ONLY OPTICS WORTHY OF THE NAME "BEAR."

Tough as the man they're named after. Like Bear, they prove their mettle when the conditions range somewhere between awful and unforgiving. Multicoated optics and razor-sharp BaK-4 prisms guide the way, giving you maximum brightness, even when the weather doesn't. And the rugged, waterproof design is made to withstand everything from a scramble up a rock face to long treks in the rain. For those who never flinch in the face of challenge - and expect the same from their optics.

FEATURES

BaK-4 prisms ▶ Multi-coated optics ▶ Waterproof
Embroidered case with BG logo ▶ Fogproof



NEW
10x 42mm
181042CL

Wide field of view magnifications ideal for long-range observations.



NEW
8x 25mm 180825CL

Compact, yet ready for any rugged situation.



NEW
9x 32mm 180932CL

The Bear Grylls monocular is ultra compact, perfect for on-the-go adventures.

MODEL	MAGNIFICATION X OBJ. LENS	SIZE CLASS	FOCUS SYSTEM	PRISM SYSTEM	PRISM GLASS	LENS COATING	FIELD OF VIEW ft. @1000yds. / m @1000m	CLOSE FOCUS (ft. / m)	EXIT PUPIL (mm)	EYE RELIEF (mm)	EYECUPS	WEIGHT (oz. / g)	WATER/FOG PROOF	ADAPT TO TRIPPOD
*181042CL	10x 42	Standard	Center	Roof	BaK-4	Multi-Coated	305/102	12/3.6	4.2	17	Twist-Up	25/709	Yes	No
*180825CL	8x 25	Compact	Center	Roof	BaK-4	Multi-Coated	360/120	14/4.6	3.2	13.5	Twist-Up	10.2/290	Yes	No
*180932CL	9x 32	—	—	Roof	BaK-4	Multi-Coated	315/105	10/3.3	3.6	16	Twist-Up	4.8/137	Yes	No

* NEW FOR 2014



NEW BackTrack D-TOUR 360311BG

Bear Grylls Edition BackTrack D-TOUR is GPS Made Simple™. Like Bear, you'll never get lost, no matter where you are.

FEATURES

Logs up to 48 hours of trip data
Stores and locates up to 10 locations plus a trail map* ▶ Includes time (military or civilian)/temperature (fahrenheit or celsius)/altitude ▶ Distances in yards/ miles or meters/kilometers ▶ Latitude and longitude coordinates ▶ Weather-resistant construction ▶ 1-year limited warranty

* Only for 360311BG.

SOLAR POWER THAT'S MADE TO CHARGE ANYWHERE, ANYTIME.

NEW SolarWrap Mini PP1011BG

Max portability meets reliable powering, with solar charging and power storage for charging off the grid.



FORGED WITH AN UNFLINCHING SURVIVAL INSTINCT.

You can never be too prepared in the wild. Take it from the world's ultimate survival expert. Even in the dark, always find your way back with our Bear Grylls Edition BackTrack D-TOUR or Bear Grylls Edition BackTrack, And keep your smart phone, MP3 or action camera charged in any environment with the Bear Grylls Mini SolarWrap, Bear can get out alive and with these simple, reliable tools, so can you.



Create your own map with our new Trail Map feature.

NEW BackTrack 360411BG

Lightweight with an ergonomic shape and simple-to-use.



MODEL	COLOR	SCREEN TYPE	BACKLIGHT	LOCATION	WEIGHT (OZ. / G)	BATTERY TYPE	DIMENSIONS (MM)	
*360311BG	Black/Orange	Grayscale LCD	Yes	10	2.8 / 80	AAA (3)	100 x 72 x 20	
*360411BG	Black/Orange	Grayscale LCD	Yes	3	2.4 / 68	AAA (2)	64 x 80 x 19	
MODEL	WEIGHT (OZ. / G)	SIZE (IN. / MM)	DEPLOYED LENGTH (IN. / CM)	CHARGE FROM WALL	CHARGE FROM SOLAR	USB OUTLETS	POWER OUTPUT	BATTERY TYPE
*PP1011BG	3.1 / 88	4.3 x 1.25 / 110 x 32	18.25 / 46	4 hours	10 hours	1	5v, 1a	Li Ion

* NEW FOR 2014

OUTDOOR TECHNOLOGY

Page 58-112





Year after year, the world's most advanced outdoor technologies all share the Bushnell® name. For 2014, we add new neo XS GPS to our Golf Rangefinders. The tiny trail camera that started a revolution continues to lead this year and is now also available for wildlife observers with the new NatureView Cam and the new 2014 Trophy Cam HD. We have also taken smart, simple GPS technology a step further with the addition of the new FishTrack GPS to our GPS line-up. All while finding better ways to turn night into day with Night Vision and freeze those once-in-a-lifetime moments with our Sport Imaging line-up. If our customers can dream it, we can built it better than anyone else.

**TODAY'S TOP TECHNOLOGIES
AT WORK FOR A GREATER GOOD:
THE GREAT OUTDOORS.**

GOLF RANGEFINDERS

page 60

**LASER RANGEFINDERS**

page 70

**NIGHT VISION**

page 80

**TRAIL CAMERAS**

page 88

**BACKTRACK™ GPS**

page 100

**SPORTS IMAGING**

page 106





PGA TOUR PRO
Rickie Fowler



PGA TOUR PRO
Lee Westwood



PROUD USA COMPANY



You play the game to win. And we know that. That's why you won't get anything less than the most advanced technology and utmost precision from our 2014 Laser and GPS lineup. It is no wonder the brand is trusted by more than 90% of PGA Tour Pros. There are few adjectives in this world as emphatic as "undisputed". We've earned it. Trusted by more PGA Professionals*. Ready to be the next tool you simply can't live without. In 2014, the PinSeeker with JOLT Technology is featured on the Tour V3, the new Tour Z6 JOLT and the new PRO X7 JOLT.



5

All Bushnell™ laser rangefinder models, except the Pro X7 JOLT Slope Edition and the Tour TM V3 Slope Edition, are legal to use when local USGA & RGA rule 14-3j(5) is in effect.

* The Dorell Survey, one of the most trusted research firms in golf for more than 75 years, confirmed once again in 2013 that Bushnell is the most dominant laser rangefinder on the PGA Tour.

NEO XS GPS WATCHES

page 62



HYBRID LASER GPS

page 63



NEO GPSTM

page 63



PRO X7™ JOLT

page 64



TOUR Z6™ JOLT

page 65



TOUR™ V3

page 66



PINSEEKER WITH JOLT

page 67

MEDALIST™

page 68



ACCESSORIES

page 67

TERMINOLOGY

page 69

GOLF RANGEFINDERS



Bushnell®

GOLF

www.bushnellgolf.eu

OFFICIAL LICENSEE
2014 RYDER CUP



PROUD USA COMPANY

THIN, COMFORTABLE, LONG BATTERY LIFE & MORE HAZARDS.

Simple to use, lightweight and comfortable to wear. Preloaded with +33,000 courses in more than 30 countries (Denmark, Finland, France, Germany, Ireland, Italy, Netherlands, Norway, Portugal, South Africa, Spain, United Arab Emirates, United States, Canada, Puerto-Rico, Mexico, Belgium, Switzerland, Austria, United Kingdom, Sweden, Australia & New Zealand). Long battery life - 50% better than the nearest competitor. Over 1 year battery life when used in watch mode. No downloads. No membership fees. Easy front/center/back distances to the green as well as one button shot distance measurement.

FEATURES

Ready to play right out of the box ▶ Preloaded with +33,000 courses in more than 30 countries (Denmark, Finland, France, Germany, Ireland, Italy, Netherlands, Norway, Portugal, South Africa, Spain, United Arab Emirates, United States, Canada, Puerto-Rico, Mexico, Belgium, Switzerland, Austria, United Kingdom, Sweden, Australia & New Zealand) ▶ Auto Course Recognition ▶ Auto Hole Advance ▶ Sunlight - Readable Display (scratch-resistant mineral Crystal lens) ▶ Easy-to-Read Front/Center/Back Distances ▶ Hazard/Layup Distances (up to 4 per hole) ▶ Accurate Shot Distance Calculator ▶ Waterproof to 10m ▶ Standard watch features : Round odometer, Stopwatch, Alarm ▶ Power cord/adaptor, USB sync cable, Quick start guide included ▶ One-Year Warranty ▶ Rechargeable Lithium-ion Battery ▶ Long Battery Life - play 3 rounds before charging



368551 (Black/Orange)

368552 (White/Cobalt)



NEW NEO XS WATCHES

368550 (Black / Yellow)
368551 (Charcoal / Orange)
368552 (White / Cobalt)



368550 (Black/Yellow)

Features an inverted White-on-Black display



383 yds/m

367 yds/m

399 yds/m

MODEL	COLOR	SCREEN TYPE	PRELOADED COURSES	MENU	WEIGHT	THICKNESS	BATTERY LIFE	WATERPROOF	ODOMETER	STOPWATCH	ALARM	ACCURACY
*368550	Black / Yellow	WGB Text LCD	+ 33000	5 languages	53 g	14,5 mm	Over 14 hours (GPS mode)	Yes (10m)	Yes	Yes	Yes	+/- 5
*368551	Charcoal / Orange	B&W Text LCD	+ 33000	5 languages	53 g	14,5 mm	Over 14 hours (GPS mode)	Yes (10m)	Yes	Yes	Yes	+/- 5
*368552	White / Cobalt	B&W Text LCD	+ 33000	5 languages	53 g	14,5 mm	Over 14 hours (GPS mode)	Yes (10m)	Yes	Yes	Yes	+/- 5

* NEW FOR 2014.



NEW Hybrid Laser & GPS

201325EU (30,000+ courses worldwide : Canada, Denmark, Finland, France, Germany, Ireland, Italy, Netherlands, Norway, Portugal, South Africa, Spain, United Arab Emirates, United States, United Kingdom, Sweden, Australia, New Zealand, Belgium, Switzerland & Austria).

HYBRID LASER > GPS

LASER SPECIFICATIONS

PinSeeker Technology ▶ +/- 1-Yard/meter Accuracy ▶ 300 yds / 275m to flag ▶ 5x magnification ▶ Scan Mode ▶ Ranges (5 yards/m minimum): Flag: 300 yards/270 m ▶ Adjustable eyepiece with click stops ▶ 3-volt lithium battery included ▶ Premium carrying case

GPS SPECIFICATIONS

Preloaded with over 30,000 courses worldwide (including Canada, Denmark, Finland, France, Germany, Ireland, Italy, Netherlands, Norway, Portugal, South Africa, Spain, United Arab Emirates, United States, United Kingdom, Sweden, Australia, New Zealand, Belgium, Switzerland & Austria) ▶ No membership fees ▶ Provides distance to Front, Center and Back of green ▶ Up to 4 Custom points per hole ▶ Auto course recognition ▶ Auto hole advance ▶ Shot distance calculator

THE BEST OF BOTH WORLDS.



Introducing the world's first Laser Rangefinder and GPS in one. Combining laser accuracy with GPS convenience, it's just the game-changer you need. It features the PinSeeker Technology used by more than 90% of PGA professionals, with +/-1-yard accuracy, 5x magnification and distance to front, center and back of green. Plus, the GPS function offers 30,000+ Courses Worldwide (Canada, Denmark, Finland, France, Germany, Ireland, Italy, Netherlands, Norway, Portugal, South Africa, Spain, United Arab Emirates, United States, United Kingdom, Sweden, Australia, New Zealand, Belgium, Switzerland & Austria**). Auto Hole Advance, Auto Course Recognition and no one-time or re-occurring membership fees.

MODEL	COLOR	SCREEN TYPE	CUSTOM POINTS / HOLE	BATTERY TYPE	RAINPROOF	ACCURACY GPS				
*201325EU	White	BBW Text	4	Rechargeable lithium-ion	Yes	+/- 5 yds/m				
LASER SPEC	RANGE (yds. / m)	MAGNIFICATION X OBJ. LENS	SIZE (in. / mm)	WEIGHT (oz. / g)	CASE	PINSEEKER	RANGING PERFORMANCE			ACCURACY LASER
							REFLECTV. (yds. / m)	TREE (yds. / m)	FLAG (yds. / m)	
*201325EU	5-1000 / 900	5x 24	2.1x2.6x1.3 / 54x66x109	8 / 226	Yes	Yes	1000 / 900	700 / 640	300 / 270	+/- 1 yds/m

neo+



FEATURES

Ready to Play Right Out of the Box ▶ No membership fees, no downloads ▶ Auto Course Recognition ▶ Auto Hole Advance ▶ Distance Front, Centre and Back of Green ▶ Up to 4 Custom Points per Hole ▶ Accurate Shot Distance Feature ▶ Durable and Rainproof ▶ Power cord/adaptor, USB sync cable, Belt clip, Quick start guide included ▶ One-Year Warranty ▶ SiRFstarII GPS Chip ▶ Adheres to USGA rules ▶ Dimensions: 44 x 83 x 20mm

The neo+ is pre-loaded with over 30,000 courses Worldwide (Denmark, Finland, France, Germany, Ireland, Italy, Netherlands, Norway, Portugal, South Africa, Spain, United Arab Emirates, United States, United Kingdom, Sweden, Australia & New Zealand). It provides quick, accurate distance to the front, center & back of the green, as well as key hazards. No membership fee is required to use this product, and no golf course downloads are necessary. The neo+ is ready to use, right out of the box. Bushnell has made golf distance so simple, that after neo+ has found your course, you can literally play an entire round without ever touching another button.

MODEL	COLOR	SCREEN TYPE	CUSTOM POINTS / HOLE	SIZE (IN. / MM)	WEIGHT (OZ. / G)	BATTERY LIFE	RAINPROOF	ACCURACY (yds. / m)
368156	Black	BBW Text	4	1.7x3.2x0.7 / 44x83x20	3 / 84	Over 16 hours	Yes	+/- 5

* NEW FOR 2014. ** Expendable by synchronizing on www.bushnell.golf.com.



PROUD USA COMPANY

TRUST IS EARNED. IT'S ALSO ENGINEERED.

With incredible ranging capabilities of up to 1 mile/1600m (550yds./500m to flag), Vivid Display Technology for all lighting conditions, PowerBoost and unprecedented accuracy with the PinSeeker® with JOLT Technology, the PRO X7™ is the ultimate laser rangefinder for avid golfers and tournament play.

FEATURES

+/- 1/2-yard/m accuracy ▶ PinSeeker® with JOLT Technology - zeroes in on flag ▶ Reads distances in both yards and meters ▶ Ranges (5 yards/m minimum): Reflective surfaces: 1760 yards/1600 m; Trees: 1000 yards/900 m; Flag: 550 yards/500 m ▶ Fully multi-coated optics ▶ Twist-up metal eyepiece with oversized ocular and ± 2 diopter setting ▶ Completely waterproof ▶ RainGuard® HD coating ▶ Dimensions: 1.7" x 5.1" x 3.7"/43x129x94mm ▶ Weight: 12 oz./343g ▶ 3-volt battery included ▶ Premium carrying case.



NEW Pro X7 JOLT 201400

A premium digital golf laser rangefinder with advanced selective targeting modes and superb optical quality.

Range: 5-1760 yards/5-1600 meters
Power/Obj: 7x 26mm



Jolt Technology provides the golfer with short vibrating bursts to reinforce that the laser has locked onto the flag. JOLT Technology eliminates all doubt. Use what the Pros use, feel the exact distance...
FEEL THE JOLT!



VIVID DISPLAY TECHNOLOGY

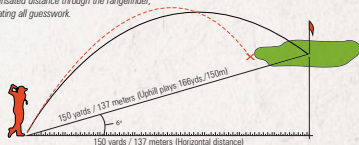
- Improved light transmission provides extra brightness
- Improved resolution provides a sharp and clear view
- Legible distance readings in all lighting conditions
- Four user adjustable intensity settings

SLOPE TECHNOLOGY

The distance ranged is 150 yards/137 m, but with the 6 degree incline in elevation, the shot will effectively play like 166 yards/150 m.

The Pro X7 Slope Edition shows you the compensated distance through the rangefinder, eliminating all guesswork.

Don't fall short again. Without slope compensation, and playing the marked yardage, you would have been short 16 yards/13 m.



MODEL	RANGE (yds. / m)	MAGNIFICATION X OBJ. LENS	SIZE (in. / mm)	WEIGHT (oz. / g)	BATTERY TYPE	CASE	TARGETING MODES			RANGING PERFORMANCE			
							RAIN	PINSEEKER WITH JOLT	SLOPE \pm	REFLCTV. (yds. / m)	TREE (yds. / m)	FLAG (yds. / m)	ACCURACY (yds. / m)
*201400	5-1760 / 5-1600	7x 26	1.7x5.1x3.7 / 43x129x94	12.1 / 343	3-volt (incl.)	Carrying case & strap	Built-In	Yes	No	1760 / 1600	1000 / 900	550 / 500	+/- 1/2
*201401	5-1760 / 5-1600	7x 26	1.7x5.1x3.7 / 43x129x94	12.1 / 343	3-volt (incl.)	Carrying case & strap	Built-In	Yes	Yes	1760 / 1600	1000 / 900	550 / 500	+/- 1/2

* NEW FOR 2014.

KNOW YOUR GOAL, OWN YOUR TARGET.

Instantaneously acquire flags up to 450 yards/410 meters away with the extreme speed and incredible range of the Tour Z6™ JOLT. Add to that the unmatched precision of E.S.P.2, our PinSeeker with JOLT Technology and the clarity of VDT, and you have the world's most technologically advanced laser in the palm of your hand.



NEW Tour™ Z6™ JOLT Tournament Edition

201440

Range: 5-1300 yards/5-1200 m
Power/Obj: 6x 21mm

FEATURES

+/- 1/2 yard/m accuracy ▶ PinSeeker® with JOLT - zeroes in on flag and provide short vibrating bursts ▶ Built-in reflector ▶ 6x magnification ▶ Ranges (5 yards/m minimum : Reflective surfaces: 1300yards/1200m, Trees: 1000yards/910m, Flag: 450yards/410m ▶ Vivid Display Technology ▶ E.S.P.2 ▶ Adjustable Diopter Setting ▶ Waterproof ▶ Built-in tripod mount ▶ 3-volt CR2 battery ▶ Premium Carrying case



VIVID DISPLAY TECHNOLOGY

- Improved light transmission provides extra brightness
- Improved resolution provides a sharp and clear view
- Legible distance readings in all lighting conditions
- Four user adjustable intensity settings

ESP.2



EXTREME. SPEED. PRECISION. (E.S.P.2)™

E.S.P.2 provides yardage faster and more accurately than ever before. Not only have we increased the acquisition speed to a lightning fast level, E.S.P.2 is so accurate that from 5-125 yards / 5-114 meters, the distances is displayed to 1/10th of a yard/meter. Whatever your skill level, Bushnell gives you the most accurate technology in the game - and you'll have the confidence of knowing you have the exact yardage for every shot you'll ever hit.



MODEL	RANGE (yds. / m)	MAGNIFICATION X OBJ. LENS	SIZE (in. / mm)	WEIGHT (oz. / g)	BATTERY TYPE	CASE	TARGETING MODES			RANGING PERFORMANCE			
							RAIN	PINSEEKER WITH JOLT	SLOPE±	REFLCTV. (yds. / m)	TREE (yds. / m)	FLAG (yds. / m)	ACCURACY (yds. / m)
*201440	5-1300 / 5-1200	6x 21	1.4x3x4.1 / 35x7x104	8 / 226	3-volt CR2 (incl.)	Yes	Built-In	Yes	No	1300 / 1200	1000 / 910	450 / 410	+/- 1/2

* NEW FOR 2014.

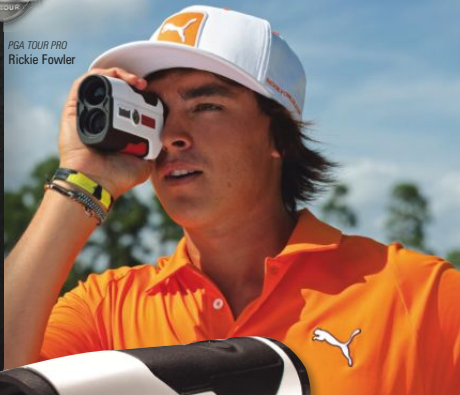


PROUD USA COMPANY

THE EVOLUTION OF PRECISION.

It's the game's most dominant advantage, and it fits in the palm of your hand. The Tour® V3 laser rangefinder packs 1000-yard/ 900-meter rangefinding capability into a compact, ergonomic design wrapped with a custom high-tack grip. Utilizing our revolutionary PinSeeker® with JOLT Technology, it zeros-in on the flag up to 400 yards/360 meters away with +/- 1 yard/m accuracy. Add to this bright, crisp multi-coated optics and 100% rainproof design and you've got a laser rangefinder so dominant, we can confidently deem it your 15th club. Also available with Slope measuring feature.

PGA TOUR PRO
Rickie Fowler



FEATURES

PinSeeker with JOLT Technology ▶ 5x magnification ▶
Ranges (5 yards/m minimum): Reflective surfaces:
1000 yards/900 m, Trees: 700 yards/640 m, Flag:
400 yards / 360m ▶ In-view LCD display ▶ Adjustable eyepiece
with click stops ▶ Multi-coated optics ▶ Instantaneous
measurements in yards and meters ▶ Built-in tripod mount ▶
3-volt battery ▶ Premium carrying case.



Tour™ V3

201360

Range: 5-1000 yards/5-900 m



TOUR v3



Tour® V3 Slope Edition

201361

Our most compact vertically-held
rangefinder is also available with
Slope +/- Technology.

Range: 5-1000 yards/5-900 m
Power/Obj: 5x 24mm



PINSEEKER
WITH JOLT TECHNOLOGY

Jolt Technology provides the golfer with short vibrating bursts to reinforce that the laser has locked onto the flag. JOLT Technology eliminates all doubt. Use what the Pros use, feel the exact distance... FEEL THE JOLT!

MODEL	RANGE (yds. / m)	MAGNIFICATION X OBJ. LENS	SIZE (in. / mm)	WEIGHT (oz. / g)	BATTERY TYPE	CASE	TARGETING MODES			RANGING PERFORMANCE			
							RAIN	PINSEEKER	SLOPE ±	REFLCTV. (yds. / m)	TREE (yds. / m)	FLAG (yds. / m)	ACCURACY (yds. / m)
201360	5-1000 / 900	5x 24	1.6x2.8x4.2 / 40x71x107	6.6 / 187	3-volt CR2 (incl.)	Yes	Built-In	Yes	No	1000 / 900	700 / 640	400 / 360	+/- 1
201361	5-1000 / 900	5x 24	1.6x2.8x4.2 / 40x71x107	6.6 / 187	3-volt CR2 (incl.)	Yes	Built-In	Yes	Yes	1000 / 900	700 / 640	400 / 360	+/- 1

ADVANCED TECHNOLOGIES

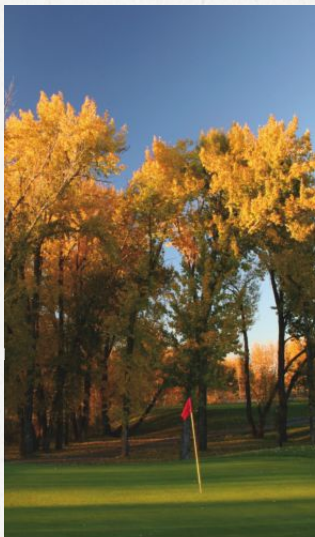


JOLT TECHNOLOGY provides the golfer with short vibrating bursts to reinforce the laser has locked onto the flag. JOLT Technology eliminates all doubt. Use what the Pros use, feel the exact distance... FEEL THE JOLT! Available on PRO X7 JOLT/ TOUR Z6 JOLT/ TOUR V3 JOLT.



« The vibration gives immediate confidence that you've got the distance to the flag »

Lee Westwood



GOLF RANGEFINDERS

JOLT TECHNOLOGY



X2 Power Reserve

203141

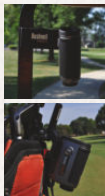
Portable charging device for Hybrid ▶ Adaptable to Hybrid and Neo ▶ Easy-to-use, no batteries or wall chargers needed ▶ Powered by rechargeable lithium ion ▶ Also works for most cell phones ▶ Includes carry case.



CLIP & GO Cart/Bag Mount

203121

Universal mount adapts your laser to any bag or cart ▶ Universal mount (fits all cart manufacturers) ▶ Adapts to all Bushnell laser rangefinders, attaches to bag ▶ Clamp mount attaches to any size golf cart pillar ▶ Positive locking inset to secure device.



LASER & GPS ACCESSORIES



PROUD USA COMPANY

EVERY GOLFER WANTS SPIN, DISTANCE AND PINSEEKER®

With its sleek horizontal profile the Medalist is about two things: lower scores and PinSeeker® technology. Quick and natural to the eye, the Medalist acquires flags tucked in the deepest corners of the green despite background clutter that befuddles lesser rangefinders. Wherever evil lurks anywhere on the course, the Medalist with PinSeeker® provides you with the information you want, to make the shot you need.



Medalist™
201355

Range: 5-1000 yards/5-900 m
Power/Obj: 4x 20mm

FEATURES

PinSeeker® technology ▶ 4x magnification ▶ Scan Mode
▶ In-view LCD display ▶ Distance in yards and meters, 300 yards/270 m to flag, 700 yards/640 m to trees, 1000 yards/900 m to reflective surface ▶ 9-volt battery and carrying case included.



MODEL	RANGE (yds. / m)	MAGNIFICATION & OBJ. LENS	SIZE (in. / mm)	WEIGHT (oz. / g)	BATTERY TYPE	CASE	TARGETING MODES			RANGING PERFORMANCE			
							SCAN	RAIN	PINSEEKER	REFLECTV. (yds. / m)	TREE (yds. / m)	FLAG (yds. / m)	ACCURACY (yds. / m)
201355	5-1000 / 5-900	4x 20	1.7x4.5x3.8 / 43x14x9.6	9 / 255	9-volt (incl.)	Yes	Yes	Built-in	Yes	1000 / 900	700 / 640	300 / 270	+/- 1



Without PinSeeker®



With PinSeeker®



The Problem:

With false readings from your rangefinder a game of inches/centimeters becomes a game of yards/meters. The problem with most yardage devices is the target is in constant competition with the larger objects that surround it. These larger objects like trees or land features contain greater signal strength and provide more reflectivity than the target resulting in false distance readings. So what are you really aiming at?

The Solution:

The best approach begins with Bushnell's PinSeeker® Advantage. PinSeeker® technology ensures accurate target acquisition because it isolates your target, completely shutting out background hazards. When more than one object is sensed, the closer of the two is displayed so the desired distance is calculated every time within +/- 1 yard/meter.



PinSeeker® allows easy acquisition of the flag without inadvertently capturing background targets.

WHAT MAKES IT BUSHNELL. Our rangefinders use an invisible, eye-safe Class I laser beam, which is "bounced" off distant objects with the press of a button. Then the rangefinder's high-speed digital clock measures the time it takes for the laser beam to reach the target and return to the unit. Next, using advanced digital electronics, the rangefinder instantly calculates the distance within ± 1 yard / Meter and shows the range in either yards or meters. The entire process is so fast that less than a second elapses between the time you press the button to generate a laser beam to the time the exact range to your target is displayed.

VIVID
DISPLAY TECHNOLOGY

Created specifically for our premium rangefinder, this optical enhancement dramatically improves contrast, clarity and light transmission, while increasing the brightness of digital readout information for rapid, positive identification in all lighting conditions. It's simply the best of heads-up projection displays. (models 201400, 201401, 201440)



ESP2
EXTREME SPEED PRECISION

EXTREME. SPEED. PRECISION. (E.S.P.2)™
E.S.P.2 provides yardage faster and more accurately than ever before. Not only have we increased the acquisition speed to a lightning fast level, E.S.P.2 is so accurate that from 5-125 yards / 5-114 meters, the distances is displayed to 1/10th of a yard. Whatever your skill level, Bushnell gives you the most accurate technology in the game - and you'll have the confidence of knowing you have the exact yardage for every shot you'll ever hit. (model 201960)



PINSEEKER
TECHNOLOGY INSIDE

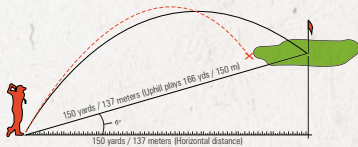
The best approach begins with the Bushnell® PinSeeker® Advantage. PinSeeker Technology ensures accurate target acquisition because it isolates your target, completely shutting out background hazards. When more than one object is sensed, the closer of the two is displayed so the desired distance is calculated every time within ± 1 yard / meter (Model 201355).



PINSEEKER
WITH JOLT TECHNOLOGY

Jolt Technology provides the golfer with short vibrating bursts to reinforce that the laser has locked onto the flag. JOLT Technology eliminates all doubt. Use what the Pros use, feel the exact distance... FEEL THE JOLT! (except model 201355).

SLOPE COMPENSATION



Slope compensation, don't fall short again. Slope compensation calculates and adjusts swing yardage depending on the degree of the slope. So a 150-yard uphill shot of 6 degrees really will play 166yds / 150m. Without slope, compensation you would come up 16yds / 14m short.



All Bushnell® laser rangefinder models, except the Pro X7™ JOLT Slope Edition and the Tour V3 Slope Edition, are legal to use when local USGA & R&A rule 14-3j(5) is in effect.





Enhancing our technology, improving your performance - our crowning achievement. And the benchmark we've set for ourselves since we invented the first laser rangefinder for hunters 18 years ago. Which demands our laser rangefinders be the most precise in the business, our dominating reign continues in 2014. Introducing G-Force® DX ARC™. Upgraded from our original workhorse, now with an innovative 2nd Generation E.S.P.™ (Extreme. Speed. Precision.) Turboprocessor, and housed in a sleek, slim, durable unit. And this year Bushnell® and Team Primos® join forces with The Truth with Clearshot™, so you will never doubt a shot again. Still the world's most popular, most precise name in laser rangefinders. Long live the king.

**PROUD INNOVATORS
OF THE FIRST & ONLY
SURE THING IN HUNTING.**

6

ELITE® I600 ARC

page 72



G-FORCE® DX ARC

page 73



SCOUT® DX I000 ARC

page 74



FUSION™ I MILE ARC

page 75



THE TRUTH WITH ARC

page 76



THE TRUTH WITH CLEARSHOT™

page 77



SPORT® 850

page 78



ACCESSORIES

page 78

TERMINOLOGY

page 79





PROUD USA COMPANY

THE FARTHEST REACH OF TECHNOLOGY.

½-yard/meter accuracy out to 200 yds./180m.
+/- one-yard/meter accuracy out to one mile/1600m.

True horizontal distance out to 1,000 yards / 915 meters. The numbers don't lie. The first laser rangefinder found under the Bushnell® Elite® Tactical family name, the Elite® 1 Mile ARC, is a remarkable advantage for long-range shooters. In addition to deadly accuracy, it features 7x magnification, faster and more-accurate readings than any other rangefinder, and bullet drop information, regardless the angle and range you are shooting!

The display is bright red with a crisp, clear readout in any lighting and all user adjustable. There's no better way to get line of sight and true horizontal travel of your bullet to your target than the tough, waterproof Elite® 1 Mile rangefinder.



NEW
Elite® 1 Mile ARC
202421

Range: 5-1760 yards / 1600 meters
Power/Obj: 7x 26mm

FEATURES

Standard Scan mode ▶ BullsEye mode ▶ Brush mode ▶ RainGuard® HD ▶ 100% waterproof ▶ Fully multi-coated optics ▶ Rubber armored ▶ Twist-up eyepiece ▶ Built-in tripod mount ▶ Diopter adjustment ▶ Vivid Display Technology™ (VDT) enhances display readout in all lighting conditions ▶ Compatible with magnetic attachment system ▶ Posi-Thread™ battery door



MODEL	RANGE (yds. / m)	MAGNIFI- CATION	SIZE (in. / mm)	WEIGHT (oz. / g)	BATTERY TYPE	TARGETING MODES				ARC MODES		RANGING PERFORMANCE				
						SCAN	BULLSEYE	BRUSH	2 ND GEN. ESP	BOW	RIFLE	RFLCTV. (yds. / m)	TREE (yds. / m)	DEER (yds. / m)	ACCURACY (yds. / m)	
*202421	5-1760/1600	7x	1.7x5.1x3.7/43x129x94	12.1/343	3-volt CR123 (incl.)	Yes	Yes	Yes	Yes	Yes	Yes	1760/1600	1000/900	500/450	+/- 1/2	

* NEW FOR 2014



ARC (angle range Compensation)

- Instantly accounts for the angle when calculating distance so you know precisely where to shoot.
- Provides true horizontal distance out to 1000 yards/meters.
- Provides holdover/bullet-drop data in inches, centimeters, MOA or Mil.



2nd generation E.S.P.™ (Extreme Speed Precision)

Provides 1/2 yard accuracy from 5-199 yards.



Vivid Display Technology (VDT)

Dramatically improves contrast, clarity and light transmission for rapid, positive identification in all lighting conditions.



VSI™ (Variable Sight-In) Feature

This Rifle Mode feature allows you to set your holdover/bullet-drop information for your rifle's zero - select between 100, 150, 200 and 300-yard sight-in distances for deadly accurate information at the push of a button. Measurements can be displayed in inches, MOA or 1 Mil and VSI also provides shot angle information from -90° to +90°.



NEW G-Force® DX ARC™

202460

202461 (camo)

Range: 5-1300 yards / 1200 meters

Power/Obj: 6x 21mm

WATER
PROOFFMC
FLUOROCARBON COATED OPTICSRAIN
GUARD
HD

ESP.2

2ND GENERATION E.S.P.2™ (EXTREME. SPEED. PRECISION)

Provides 1/2 yard accuracy from 5-199 yards.



VSI™ (VARIABLE SIGHT-IN) FEATURE

This Rifle Mode feature allows you to set your holdover/bullet-drop information for your rifle's zero - select between 100, 150, 200 and 300 yard / meter sight-in distances for deadly accurate information at the push of a button. Measurements can be displayed in inches / cm, MOA or .1 Mil and VSI also provides shot angle information from -90° to +90°.

EXTREME. SPEED PRECISION.

Lightning speed and unrivaled precision in the palm of your hand.

Equipped with our E.S.P.2™ (Extreme. Speed. Precision) Turboprocessor, the G-Force® DX ARC™ is a performance-enhanced version of the most accurate laser rangefinder system in the world - Bushnell® ARC™. It delivers industry-leading 1/2-yard / meter accuracy and 1/10-yard / meter display precision. With Vivid Display Technology™ (VDT), you get bright clear distance readings, even in low light, with an effective range of 5 to 1,300 yards / 1200 meters. ARC Bow and Rifle Modes make you deadly accurate in all seasons and terrain. And its rubber-armored metal housing makes it the toughest laser rangefinder we've ever created. Rapid target I.D. is intuitive in all weather conditions thanks to super-sharp 6x optics and our patented RainGuard™ HD lens treatment.

FEATURES

Rubber-armored metal housing ▶ 6x magnification ▶ VDT (Vivid Display Technology) ▶ E.S.P.2 (Extreme. Speed. Precision.) ▶ VSI (Variable Sight-in) ▶ Bow Mode - provides true horizontal distance from 5-99 yards / 90 meters ▶ Rifle Mode - provides bullet-drop/holdover in inches / cm ▶ BullsEye™, Brush™ and Scan mode ▶ Range: 5-1,300 yards / 1200 meters ▶ Diopter adjustment ▶ Compatible with magnetic attachment system ▶ Fully waterproof ▶ Built-in tripod mount ▶ Posi-Thread™ battery door



Vivid Display Technology (VDT)™

Dramatically improves contrast, clarity and light transmission, for rapid, positive identification in all lighting conditions.

MODEL	RANGE (yds. / m)	MAGNI- FICATION	SIZE (in. / mm)	WEIGHT (oz. / g)	BATTERY TYPE	TARGETING MODES					ARC MODES			RANGING PERFORMANCE			
						SCAN	RAIN	REFLECTOR	BULLSEYE	BRUSH	BOW	RIFLE	E.S.P.	REFLCTY. (yds. / m)	TREE (yds. / m)	DEER (yds. / m)	ACCURACY (yds. / m)
*202460	5-1300 / 1200	6x	1.3x4x2.9 / 33x10x74	8 / 227	3-volt CR2 (incl.)	Yes	Built-In	Built-In	Yes	Yes	Yes	Yes	Yes	1300 / 1200	900 / 820	600 / 550	+/- 1/2
*202461	5-1300 / 1200	6x	1.3x4x2.9 / 33x10x74	8 / 227	3-volt CR2 (incl.)	Yes	Built-In	Built-In	Yes	Yes	Yes	Yes	Yes	1300 / 1200	900 / 820	600 / 550	+/- 1/2

* NEW FOR 2014



PROUD USA COMPANY

EASY ARITHMETIC: ONE BUTTON, FOUR HOOVES IN THE AIR.

Sleek, simple and deadly effective - all with the push of a button. Then, like lightning, Scout® DX 1000 ARC™ acquires the target with built-in E.S.P. Turboprocessor. ARC calculates compensated distance based on terrain angle to give you an accurate "shoots like" reading out to 99 yards / 90 meters - even displaying 1/10th yard / meter out to 199 yards / 180 meters. With selectable Bow and Rifle Modes, each with their own specialized capabilities, it performs like two units in one. All housed inside a sleek, rubber-armored unit that's small enough to fit in your pocket, yet tough enough to withstand any weather or terrain.

FEATURES

6x magnification ▶ E.S.P. (Extreme. Speed. Precision.) Provides up to 1/2 yard / meter accuracy and 1/10th yard / meter display precision ▶ Built in inclinometer provides ARC ▶ ARC Bow Mode ▶ provides true horizontal distance from 5 to 99 yards / 90 meters ▶ ARC Rifle Mode ▶ provides bullet-drop/holdover in inches, MOA & Mil. ▶ VSI (Variable Sight-in) Bulls-eye, Brush, and Scan mode ▶ Range: 5-1000 yards / 900 meters ▶ Diopter adjustment for crystal clear viewing ▶ Fully waterproof ▶ Carrying case, battery, and neck strap included ▶ Compatible with magnetic attachment system ▶ Posi-Thread battery door



VSI™ (Variable Sight-In) Feature

This Rifle Mode feature allows you to set your holdover / bullet-drop information for your rifle's zero - select between 100, 150, 200 and 300 yard / meter sight-in distances for deadly accurate information at the push of a button. Measurements can be displayed in inches / cm, MOA or .1 Mil and VSI also provides shot angle information from -90° to +90°.



Scout® DX 1000
202356 camo

Range: 5-1000 yards / 900 meters
Power/Obj: 6x 20mm



Scout® DX 1000
202355 black

Range: 5-1000 yards / 900 meters
Power/Obj: 6x 20mm



Angle Range Compensation (ARC)*.

Extreme up and downhill angles alter true horizontal distance to your target. ARC accounts for the terrain angle when calculating distance, so you know precisely how to shoot the range.



**RIFLE
MODE**

—376 Yards / 343 meters—
-33° Angle / 28" Holdover / 71 cm holdover



**BOW
MODE**

32 Yards / 29 meters
Line of Sight
23 Yards / 21 meters
True Distance

MODEL	RANGE (yds. / m)	MAGNIFI- CATION	SIZE (in. / mm)	WEIGHT (oz. / g)	BATTERY TYPE	TARGETING MODES					ARC MODES		RANGING PERFORMANCE			
						SCAN	RAIN	REFLECTOR	BULLSEYE	BRUSH	BOW	RIFLE	REFLECT.	TREE	BEER	ACCURACY
202355	5-1000 / 900	6x	1.3x4x2.9 / 33x102x74	6.6 / 187	3-volt CR2 (incl.)	Yes	Built-In	Built-In	Yes	Yes	Yes	Yes	1000 / 900	650 / 590	325 / 300	+/- 1/2
202356	5-1000 / 900	6x	1.3x4x2.9 / 33x102x74	6.6 / 187	3-volt CR2 (incl.)	Yes	Built-In	Built-In	Yes	Yes	Yes	Yes	1000 / 900	650 / 590	325 / 300	+/- 1/2



**Fusion 1 Mile
12x 50mm**
202312



Fusion 1 Mile 8x 32mm
202308



Fusion 1 Mile 10x 42mm
202310

VIEWING AND RANGEFINDING PERFECTION, TOGETHER AT LAST.

The ultimate in efficiency, the Fusion melds the best of Bushnell binoculars with world-leading laser rangefinding capabilities. Every detail is magnified with rich contrast and stunning clarity from edge to edge using premium fully multi-coated optics and BaK-4 prisms. At the push of a button, it displays exact distance to your target from 10 to 1760 yds / 1600 m. Built-in ARC Bow Mode delivers the "shoots-like" horizontal distance, while ARC Rifle Mode provides precise bullet-drop and holdover information. Our Matrix Display Technology, RainGuard® HD anti-fog coating and a fully waterproof design ensure reliability and clarity in all conditions. It's the best of all worlds Bushnell, in your hands and at your command.

BINOCULAR FEATURES

XTR™ technology for ultimate light transmission ▶ BaK-4 prisms with PC-3® Phase Corrective Coating for superior resolution and clarity ▶ RainGuard® HD water repellent lens coating ▶ 100% waterproof ▶ Matrix Display Technology™ enhances display readout in all lighting conditions ▶ Carrying case, battery and neck strap included

RANGEFINDER FEATURES

10-1760 yards / 1600 meters ranging performance ▶ ARC (Angle Range Compensation) from -90° to +90° ▶ Bow Mode - provides line-of-sight, angle, and true horizontal distance from 10-99 yards / 90 meters ▶ Rifle Mode - provides line-of-sight, angle and bullet-drop/holdover up to 199 inches / cm ▶ VSI (Variable Sight-In) - allows sight-in distance options of 100, 150, 200 or 300 yards / meters sight-in distance when in Rifle Mode ▶ Selective Targeting System, Automatic SCAN, BullsEye™ & Brush™ modes ▶ +/- one yard / meter accuracy



Matrix Display Technology™.

Matrix Display Technology dramatically improves contrast, clarity and light transmission for rapid, positive identification. This technology also allows for visible ranging displays while not sacrificing true color fidelity in all lighting conditions.

MODEL	MAGNIFICATION X OBJ. LENS	SIZE CLASS	WEIGHT (oz. / g)	FOCUS SYSTEM	PRISM SYSTEM	PRISM GLASS	LENS COATING	RAIN- GUARD® HD	FIELD OF VIEW ft. @ 1000 yds. / m @ 1000m	CLOSE FOCUS (ft. / m)	EXT. PUPIL (mm)	EYE RELIEF (mm)	EYECUPS	WATER/ FOG PROOF
202308	8x 32	Standard	30.5 / 875	Center	Roof	BaK-4	Fully Multi & XTR	Yes	377 / 127	10.5 / 3.2	4	18	Twist-Up	Yes
202310	10x 42	Standard	31 / 880	Center	Roof	BaK-4	Fully Multi & XTR	Yes	305 / 101	10.5 / 3.2	4.2	18	Twist-Up	Yes
202312	12x 50	Standard	32 / 930	Center	Roof	BaK-4	Fully Multi & XTR	Yes	252 / 77	10.5 / 3.2	4.2	16	Twist-Up	Yes
RANGEFINDER SPECS		RANGE (yds. / m)	BATTERY TYPE		TARGETING MODES			ARC MODES		RANGING PERFORMANCE				
					SCAN	BULLSEYE	BRUSH	BOW	RIFLE	REFLECTV. (yds. / m)	TREE (yds. / m)	DEER (yds. / m)	ACCURACY (yds. / m)	
202310/201250/202308		10-1760 / 1600	3-volt CR 123 (incl.)		Yes	Yes	Yes	Yes	Yes	1760 / 1600	1000 / 900	500 / 450	+/- 1	



PROUD USA COMPANY

ANY DISTANCE, EVERY ANGLE, THE TRUTH WILL SET YOU FREE.

Bushnell®.Team Primos®.Deadliest combo since stick met string. For proof, our all-new Truth Laser Rangefinder. Driven by ARC technology with Bow Mode, it determines compensated distance based on the angle of your shot so you always know what pin to use from 7 to 199 yards / 6 to 180 m. And it delivers the same speed and pinpoint precision on line-of-sight readings out to 850 yards / 770 meters. With one-button operation, it's easy to use, while the 4x magnification offers crystalclear imagery every time. Only we make laser rangefinders that are Team Primos-approved. One hunt and you'll see why.

FEATURES

ARC ▶ Pocket-size ergonomic design ▶ 4x magnification Bow Mode - provides true horizontal distance from 7 to 199 yards / 180 meters ▶ Rainproof ▶ Range: 7-850 yards / 770 meters ▶ Angle range: -90° to +90° ▶ Lightning fast measurements ▶ Carrying case, battery and neck strap included ▶ Battery life indicator ▶ Compatible with magnetic attachment system ▶ Anti-slip (non-glossy) sure-grip finish ▶ Posi-Thread™ battery door



Bow Mode.

Provides true horizontal distance from 5 to 99 yards / 90 meters based on angle from -90° to +90.°



The Truth
202342

Range: 7-850 yards / 770 meters
Power/Obj: 4x 20mm

MODEL	RANGE (yds. / m)	MAGNIFI- CATION	SIZE (in. / mm)	WEIGHT (oz. / g)	BATTERY TYPE	TARGETING MODES					ARC MODES		RANGING PERFORMANCE			
						SCAN	RAIN	REFLECTOR	BULLSEYE	BRUSH	BOW	RIFLE	REFLCTV. (yds. / m)	TREE (yds. / m)	DEER (yds. / m)	ACCURACY (yds. / m)
202342	7-850 / 770	4x	1.4x3.8x2.9 / 36x97x74	6.0 / 170	3-volt (incl.)	No	Built-In	Built-In	No	No	Yes	No	850 / 770	600 / 550	200 / 180	+/- 1
*202442	7-850 / 770	4x	1.4x3.8x2.9 / 36x97x74	6.0 / 170	3-volt (incl.)	No	Built-In	Built-In	No	No	Yes	No	850 / 770	600 / 550	200 / 180	+/- 1

* NEW FOR 2014



NEW
The Truth
with clearshot
 202442

Range: 7-850 yards / 770 meters
 Power/Obj: 4x 20mm

CLEARSHOT™
 TECHNOLOGY



With ClearShot™, there really is no longer any excuse for missing a once-in-a-lifetime shot. This advanced laser technology takes the guess out of archery shots, even allowing hunters the ability to no longer worry about clipping branches or hitting other obstructions. After using a simple, three-step process to calibrate and customize the laser rangefinder to your bow, it will display the maximum height the arrow will travel, based upon the ranged distance. It will also show when there is an object in the way of your shot. We've taken out the variables, so you can just concentrate on taking a good, clean shot. Know your path™, and you'll get your trophy. All thanks to ClearShot™.

THE CLEAREST VIEW TO THE TARGET.

The truth of the matter is this: you won't find a clearer way to lock in and bring down your target with confidence. The Truth with ClearShot™ technology provides instantaneous feedback on your shot clearance. This advanced laser technology takes the guess out of archery shots, even allowing hunters the ability to no longer worry about clipping branches or hitting other obstructions. And with a simple three-step process, you can calibrate the rangefinder to correspond with the speed of the bow through the sight system. When done and a target is ranged, a dot is displayed to show the max height your arrow will travel. The Truth with ClearShot™ ranges out to 850 yards / 770 meters yards with a "shoots like" distance of 200 yards / 180 meters. And it even shows the angle of your shot in the process. All that, combined with our exclusive Angle Range Compensation (ARC), make this the ultimate rangefinder for bow hunters.

Team
PRIMOS
 HUNTING
APPROVED





PROUD USA COMPANY

AS SIMPLE AS MEAT ON FIRE.

Lightweight and small enough to fit in a shirt pocket, the Sport® 850 packs a monster dose of accuracy and is as easy to use as a laser rangefinder can be. Its compact dimensions and handy vertical configuration make it a favorite with bow and gun hunters alike. Instantly, with the tap of a single button, you know the exact distance to your target from 5 to 850 yards / 770 meters. And bright, crystal-clear optics get you on game with speed, even in low light. For long-term dependability, the Sport® 850 features rugged, rainproof housing.

FEATURES

Extremely lightweight ▶ Compact design ▶ Vertical configuration ▶ Rainproof housing ▶ 4x magnification ▶ Range: 5-850 yards / 770 meters ▶ Carry case, battery and neck strap included ▶ Lightning fast measurements ▶ Battery life indicator ▶ Compatible with magnetic attachment system ▶ Anti-slip (non-glossy) sure-grip finish ▶ Posi-Thread™ battery door



Sport® 850
202205 (black)

Range: 5-850 yards / 770 meters
Power/Obj: 4x 20mm



Magnetic Attachment System 203122

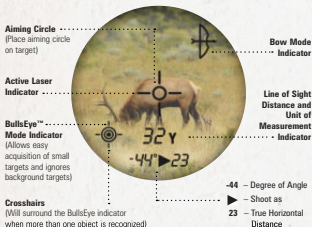
Works with any Bushnell® laser rangefinder containing a tripod mount. Conveniently and securely clip on a belt, backpack, binocular harness or safety harness for easy access.

MODEL	RANGE (yds. / m)	MAGNIFI- CATION	SIZE (in. / mm)	WEIGHT (oz. / g)	BATTERY TYPE	TARGETING MODES					— ARC MODES —		— RANGING PERFORMANCE —			
						SCAN	RAIN	REFLECTOR	BULLSEYE	BRUSH	BOW	RIFLE	REFLECTV. (yds. / m)	TREE (yds. / m)	DEER (yds. / m)	ACCURACY (yds. / m)
202205	5-850 / 770	4x	1.4x3.8x2.9 / 36x97x74	6.0 / 170	3-volt (incl.)	No	Built-In	Built-In	No	No	No	No	850 / 770	600 / 550	200 / 180	+/- 1

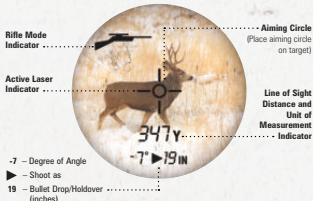
Angle Range Compensation (ARC)

Extreme up and downhill angles alter true horizontal distance to your target. ARC accounts for the terrain angle when calculating distance, so you know precisely how to shoot the range.

ARC TARGETING MODE: BOW – Provides line-of-sight, angle and true horizontal distance from 5 to 99 yards/ 90 meters.



ARC TARGETING MODE: RIFLE – Provides line-of-sight, angle and bullet drop/holdover up to 199 inches / cm.



RANGEFINDER. A laser rangefinder is a distance-measuring instrument that uses laser technology to calculate the distance to targeted objects. Accuracy is +/- 1 yard / meter* and the distance is displayed instantaneously on a built-in, through-the-lens display or heads-up projection display.

* 1/2 yard / meter for 202460, 202461, 202355, 202356, 202421.

How Bushnell® Rangefinders Work.

Bushnell's rangefinders use an invisible, eye-safe Class 1 laser beam (as classified by the FDA), which is "bounced" off distant objects with the press of a button. Then, the rangefinder's high-speed digital clock measures the time it takes for the laser beam to reach the target and return to the unit. Next, using advanced digital electronics, the rangefinder instantly calculates the distance within +/- 1 yard / meter and shows the range in either yards or meters on a through-the-lens display. The entire process is so fast that less than a second elapses between the time you press the button to generate a laser beam to the time the exact range to your target is displayed.

Reflectivity of Target Types.

Because rangefinders "bounce" a laser beam off the target in order to take a measurement, their range is partially determined by the reflectivity of the target. In other words, hard or "reflective" targets - such as a rock cliff or semi-truck - can be measured at greater distances than soft surface targets - such as a deer. Ranges for moderately reflective targets and trees, fall somewhere in the middle. Most experienced hunters will use their rangefinder to frequently estimate ranges to near and distant landmarks before they actually encounter a game animal. By pre-measuring ranges to spots where a game animal is likely to appear, they can concentrate on making an accurate shot when the moment of truth arrives.

Selective Targeting Modes:

Rain - This feature compensates for precipitation to guarantee an accurate distance measurement through rain or snow.

Reflector - This feature increases the maximum measurement range for most highly reflective objects and is built into all of our rangefinders.



Scan - SCAN across the course while viewing a continuously updated display of the distance between you and your target.



BullsEye™ - Geared for close-range use, this mode acquires the distances of small targets and game without inadvertently measuring background target distances. When more than one object is acquired, the closer of the two objects is shown on the display.



Brush™ - Ignores the foreground, such as brush, boulders and tree branches and provides distances on the display to background objects only.

Extreme. Speed. Precision. (E.S.P.2)™

Optimizes measurement accuracy based on target conditions. The laser analyzes multiple individual measurements to the target and displays the ideal strength. **ESP2** automatically assesses target variations that may disrupt the laser and improves the measurement up to 1/2 yard / meter accuracy from 5-199 yards / 180 meters. When this occurs, display precision is refined to 1/10 yard / meter readout.

Variable Sight-In (VSI)™ Feature


This Rifle Mode feature allows you to set your holdover/bullet-drop information for your rifle's zero - select between 100, 150, 200 and 300-yard / meter sight-in distances for deadly accurate information at the push of a button. Measurements can be displayed in MOA or inches / cm, and VSI also provides shot angle information from -90° to +90°.



Vivid Display Technology (VDT)™

Dramatically improves contrast, clarity and light transmission, for rapid, positive identification in all lighting conditions.





EQUINOX™ - Z - 6X 50MM

Page 83



Confidently close the distance, even in the dead of night. For the ultimate nocturnal advantage, no name delivers more advancements and assurance than Bushnell®. From any distance, even in pitch black, nighttime doesn't stand a chance against Bushnell Equinox™ Z. Forged to the height of optical engineering, to produce the brightest, sharpest images ever offered in its class. It's joined by our full range of night vision products, enhanced for 2014 to push us even further into the lead. For optimum performance in after-dark viewing, the choice is clear. Bushnell.

IT'S THE DAWN OF A NEW ERA
IN AFTER-DARK VIEWING.

7

EQUINOX™

page 82



EQUINOX™ Z

page 83



LYNX™

page 84



STEALTHVIEW™ II

page 85



STEALTHVIEW™

page 86



NIGHTWATCH

page 86



TERMINOLOGY

page 87





PROUD USA COMPANY

NIGHT'S ULTIMATE EQUALIZERS HAVE ARRIVED.

With the NEW digital Equinox Z Night Vision monoculars from Bushnell, you'll be able to enjoy outstanding optical clarity, ultimate illumination and an unmatched field of view. Features such as zoom, image capture, video recording and daytime color lead the way in our new flagship series. Other bar-setting features include a long battery life, tripod-mounting capabilities and glass objectives. Plus, they all feature an extra-durable housing. Nothing lights up the night like Equinox Z Night Vision.



I-Beam for Equinox

267100

The ultimate performance enhancer for your monocular, powerful flashlight extends range and battery life, and fits on Equinox rail.



2x 28mm Equinox

260228

Style: Gen 1 Monocular

Features a compact design with the clarity and brightness of our new charged-up Gen 1 optics.

FEATURES

2x magnification ▶ Super bright Gen 1 ▶ IPX4 weather-resistant ▶ Durable rubber housing ▶ Long battery life ▶ Compact and lightweight ▶ Built-in Tripod mount



NEW 3x 30mm Equinox™ Z

260130

Style: Digital Monocular



DIGITAL ZOOM
1-3X



DAYTIME
COLOR



DISTANCE
500 FT. / 150M



NEW 4.5x 40mm Equinox™ Z

260140

Style: Digital Monocular



IMAGE
CAPTURE



VIDEO
RECORDING



DAYTIME
COLOR



DISTANCE
750 FT. / 230M



DIGITAL ZOOM
1-3X

NEW 6x 50mm Equinox™ Z

260150

Style: Digital Monocular



IMAGE
CAPTURE



VIDEO
RECORDING



DAYTIME
COLOR



DISTANCE
1000 FT. / 300M



DIGITAL ZOOM
1-3X



DIGITAL NIGHT VISION FEATURES

Powerful infrared illumination ▶ 4 AA batteries ▶
Day or night viewing ▶ Rugged water-resistant
housing ▶ Video out capable ▶ Tripod mountable ▶
Outstanding optical clarity ▶ Micro SD card slot
(up to 32GB) only on 260140 & 260150



MODEL	TYPE	MAGNIFICATION X OBJ. LENS	MAXIMUM VIEWING RANGE (ft. / m)	FIELD OF VIEW (ft. @ 100 yds. / m @ 100m)	INFRARED ILLUMINATOR	PHOTO/VIDEO	BATTERY TYPE	SIZE (in. / mm)	WEIGHT (oz. / g)	TRIPOD MOUNT
260228	Gen 1	2x 28	656 / 200	112 / 37	Yes	No	CR 123 (1)	5.8 x 3.2 x 2.1 / 147 x 82 x 52	9.2 / 262	Yes
*260330	Digital	3x 30	500 / 150	30 / 9	Yes	No	AA (4)	6.5 x 3.2 x 2.1 / 164 x 82 x 53	15 / 425	Yes
*260441	Digital	4x 40	738 / 225	28 / 8	Yes	Yes	AA (4)	6.5 x 3.9 x 2.4 / 164 x 98 x 62	22 / 623	Yes
*260651	Digital	6x 50	984 / 300	20 / 6	Yes	Yes	AA (4)	7.85 x 3.9 x 2.5 / 191 x 98 x 64	27 / 765	Yes

* NEW FOR 2014.



PROUD USA COMPANY

SET YOUR SIGHTS ON THE FUTURE OF NIGHT VISION BINOCULARS.

Bushnell is taking night vision optics to a whole new level with the next-generation Lynx binoculars. These nightvision binoculars sport a viewing distance of 750 ft. / 228m, respectively. The model features built-in IR for the best night viewing possible. It also boasts long-lasting power with a minimalistic power supply (two AAA batteries).

Better battery life and better range in an extremely lightweight, compact design? That's the future of night vision, brought to you by the new Bushnell Lynx binoculars.



FEATURES

Gen. 1 image-intensifier tube ▶ Powerful infrared spotlight ▶ 750 ft./ 228 m viewing range ▶ Weather-resistant ▶ 20/70 hours ▶ Built-in tripod mount ▶ Operates on 2 AAA batteries



NEW
2x 40 mm

260401
Style: Gen 1 Binocular

Exceptionally comfortable to use during long periods of observation and viewing. Lightweight, extra-long viewing range and a wide field of view makes these binoculars ideal for law enforcement, night navigation and wildlife surveillance.

MODEL	MAGNIFICATION X OBJ. LENS	VIEWING RANGE (ft. / m)	FIELD OF VIEW (ft. @100yds. / m. @100m)	INFRARED ILLUMINATOR	BATTERY TYPE	SIZE (in. / mm)	WEIGHT (oz. / g)	TRIPOD MOUNT
*260401	2x 40mm	4-750 / 1.2-228	94 / 31	Yes (Built-In)	AAA (2)	6.5 x 6.3 x 3.0 / 165 x 160 x 76	28 / 794	Yes

* NEW FOR 2014.



WITH THE WORLD GOING GREEN, WE ARE GOING COLOR.

More detail with the power of digital.

Featuring our color LCD* over the traditional green, our new StealthView™ II Digital Color Night Vision penetrates the cover of darkness with more true-to-life detail than ever before possible in a night vision optic of this class. Its digital system offers a distinct advantage in resolution and clarity over traditional Gen 1 analog. It's ideal for wildlife observation, night fishing, boating, caving and more. Other features include true 3x magnification, rugged armored housing and a wide field of view.

* Color LCD screen (PAL).

The color LCD screen of our Digital Color monocular provides black and white images in complete darkness, and images with a degree of color when available light is sufficient. The degree of color depends directly on ambient light: the more ambient light, the more colorful the images provided by the LCD screen.



3x 32mm StealthView™ II

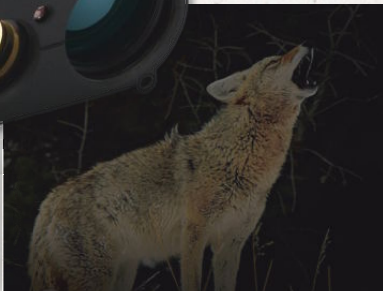
260333

Style: Digital Monocular

This unit features a color LCD (vs. the traditional green) to help you penetrate the cover of darkness with more true-to-life detail than ever before.

FEATURES

CMOS vs image-intensifier tube ▶ In-view color LCD* display (vs. green) ▶ Over 70ft @ 100 yards/23m @ 100m field of view ▶ Adjustable eyepiece ▶ Weather resistant ▶ Video output ▶ Operates on four AA battery



MODEL	MAGNIFICATION X OBJ. LENS	VIEWING RANGE (ft. / m)	FIELD OF VIEW (ft. @ 100yds. / m @ 100m)	INFRARED ILLUMINATOR	BATTERY TYPE	SIZE (in. / mm)	WEIGHT (oz. / g)	TRIPOD MOUNT
260333	3x 32	1-300 / 3-91	70 / 23	Yes (auto)	AA (4)	5.9 x 3.8 x 20 / 150 x 95 x 51	13.4 / 380	Yes

NATURE'S LATE SHOW IS TOO GOOD TO MISS.

No telling how you'll react when faced with what lurks after dark, but with Bushnell® Night Vision, time will never again dictate your hours of operation. These optics turn night into day with built-in infrared illuminators and advanced light-gathering technology. The StealthView™ digital model uses an infrared spotlight for long-range brightness and clarity. The entire lineup is perfect for camping, caving, wildlife observation, surveillance - any time or place you think you're ready.



PROUD USA COMPANY

5x 42mm StealthView™

260542

Style: Digital Monocular

StealthView™ Digital Night Vision products use a powerful infrared spotlight to produce images with resolution rivaling that of Generation 2 and 3 optics. The view is sharp from edge to edge, and they're effective in complete darkness and at long distances. As the name suggests, they're also nearly invisible to game animals and observers.



FEATURES

CMOS vs image-intensifier tube In-view B&W micro display ▶ Adjustable eyepiece
▶ Powerful infrared spotlight ▶ 600-feet/180m viewing range ▶ Weather-resistant
▶ Video output ▶ Built-in tripod mount ▶ Operates on six AA batteries ▶ 2-hour continuous run time with IR on and eight hours without IR

MODEL	MAGNIFICATION X OBJ. LENS	VIEWING RANGE (ft. / m)	FIELD OF VIEW (ft. @ 100yds. / m. @ 100m)	INFRARED ILLUMINATOR	BATTERY TYPE	SIZE (in. / mm)	WEIGHT (oz. / g)	TRIPOD MOUNT
260542	5x 42	1-600 / 3-180	30 / 10	Yes (Dual)	AA (6)	6.5 x 4 x 2.3 / 166 x 102 x 57	20.2 / 573	Yes

2x 24mm NightWatch

260224

Style: Gen 1 Monocular

2x magnification. Rubber-armored grip, built-in tripod mount and infrared illuminator. Includes case and lanyard.



FEATURES

Scouting game ▶ Security and surveillance ▶ Camping fun ▶ Exploring caves ▶ Nighttime navigation ▶ Night fishing and boating ▶ Wildlife observation ▶ Search and rescue

MODEL	MAGNIFICATION X OBJ. LENS	VIEWING RANGE (ft. / m)	FIELD OF VIEW (ft. @ 100yds. / m. @ 100m)	INFRARED ILLUMINATOR	BATTERY TYPE	SIZE (in. / mm)	WEIGHT (oz. / g)	TRIPOD MOUNT
260224	2x 24	5-400 / 1.5-122	105 / 35	Yes (Built-In)	AA (2)	5.9 x 3.5 x 2.3 / 150 x 90 x 59	10.7 / 303	Yes

NIGHT VISION. Bushnell® Digital Night Vision is comprised of high-quality optics and electronics to provide high-resolution images. Using the latest technology, day and nighttime images are magnified and displayed on an internal micro-display viewing screen.

Digital Night Vision

Bushnell Digital Night Vision products collect existing light through the objective lens, which is then processed through a CCD or CMOS digital image sensor which converts light into an electronic signal - similar to the ones commonly used in digital cameras, but with greater sensitivity extending into the infrared range. After additional processing, the digital image is then transferred to a "near eye" LCD micro-display for you to view. The image quality is comparable to Gen 2 or higher night vision units that use conventional analog image intensifier technology (digital night vision does not use the "Gen ____" classification system). Another advantage offered by digital night vision technology is video output capability, allowing real-time transmission to video camcorders, TV monitors or computers.

Image-Intensified Night Vision

An optical device comprised of high-quality, image-intensifier tubes and optics that amplify existing light to allow you to see in conditions too dark for the naked eye.

How Does It Work?

1. Available light (energy) is collected by the objective lens and focused on the image intensifier.
2. Inside the intensifier, a photocathode is "excited" by the light and converts the energy into electrons.
3. The electrons accelerate across an electrostatic field inside the intensifier and strike a phosphor screen (like a monochrome TV screen), which emits an image that you can see. This acceleration of electrons provides gain and enhances the image.

Types of Bushnell Night Vision

Generation 1 (Analog): Does not require an active infrared light source. Instead it amplifies available ambient light.

Digital: An infrared sensitive digital sensor and LCD display produce higher viewing quality than analog technology.

Night Vision Monocular: A night vision device for use with one eye.

Night Vision Binocular: Two complete sets of optics and image intensifiers that are connected and share a common power supply.

Field of View

The width of the field visible through the night vision system at a distance of 100 yards or meters.

Eyepiece Focus

Used to match your night vision scope to your specific eyesight.

Image Intensifier or Intensifier Tube

The active component in an analog night vision system that amplifies light and presents a usable image.

Infrared (IR) Illuminator

Provides a light source for the system to amplify, yielding enhanced images in very low-light conditions such as caves, where no ambient light is available for amplification.

Built-In Dual-Beam Infrared Illuminators

Allows you to adjust the IR from low to high power according to your needs - high beam for long range illumination and low beam for wide-angle illumination.

Objective Lens

Collects all available light and focuses it on the image intensifier. It also provides image magnification. The best objective lenses are high-speed (f2 or faster) and are coated for maximum efficiency in the near-infrared bandwidth.

Phosphor Screen

Positioned at the back of the intensifier tube, the green phosphor screen renders a visible night vision image. The human eye is most sensitive to green contrasts.

Photocathode

Converts light (photon energy) into electrons (electrical energy), which are then amplified in the intensifier. The objective lens focuses available light on the photo-electric surface of the photocathode, which is excited and passes electrons within the tube.

Resolution

A measure of the ability to render and display a detailed image. Image-intensifier resolution remains constant and is expressed as the maximum number of line pairs per millimeter (lp/mm) that can be discerned when a black-and-white stripe pattern is focused on the photocathode.



NATURE VIEW™ CAM HD
Page 94





Year after year, advancing the tiny-trail-cam revolution. World-renowned for its one-year battery life and lightning trigger speed, Trophy Cam™ has towered over the industry since it was first unveiled. Guided by our unceasing drive to deliver the most reliable, advanced equipment available, we're taking it even farther in 2014. Hybrid Capture Mode, Freeze Frame Shutter, Hyper PIR, ARD LED shield and a brand new design for the Trophy Cam HD 2014 - just a few new features you'll see this year. True HD video and Field Scan 2x return, proving why Trophy Cam remains the wood's hardest-working trail cam. We're also bringing stunning video capture technology and close focus capabilities to nature lovers with NatureView® Cam HD and a new Surveillance Cam with Wi-Fi for security.. The revolution continues. As always, Bushnell® leads the way.

TOWERING OVER THE INDUSTRY,
ONE MAJOR BREAKTHROUGH
AT A TIME.

8

TROPHY CAM™ HD 2013

page 90



TROPHY CAM™ HD 2013

page 92



NATUREVIEW® CAM HD

page 94



TROPHY CAM™

page 96



SURVEILLANCE CAM™

page 97



ACCESSORIES

page 96

PRODUCT GUIDE

page 98

TERMINOLOGY

page 99



VISIT OUR **TROPHY CAM WEBSITE**
www.trophycam.eu



BROWSE OUR PHOTOS/VIDEOS GALLERIES



CREATE YOUR ACCOUNT WITHIN A FEW SECONDS TO UPLOAD AND SHARE YOUR PERSONAL TROPHY CAM PHOTOS/VIDEOS



GRADE YOUR FAVORITE PHOTOS/VIDEOS AND SORT THEM INTO YOUR ALBUMS



PROUD USA COMPANY

WHEN THE GOING GETS ROUGH, THE DEDICATED GO AGGRESSIVE.

The outdoors are rough. There's no sugar coating it. The elements must always be taken into account. With the new Trophy Cam™ HD 2014 from Bushnell®, though, you can render those worries moot. It has an all-new, extremely aggressive design, removable "ARD" LED shield, strengthened cable lock channel and an improved latch for maximum ruggedness. And that's just on the outside! Inside, even the technology ups the ante with an 8-AA size case, black LED array, extended night vision capabilities and 1080p HD video capabilities with audio recording. And with a one-year battery life and solar panel compatibility, you won't have to worry about it running out of juice in key situations. All to ensure the Trophy Cam™ HD delivers industry-leading reliability and ruggedness to help you hunt better!



All Trophy Cam HD are capable of capturing 720p HD video – with sound – for a brilliant connection to the game you hunt.



A quantum leap in distance and brightness, this new system ensures the sharpest after-dark images.



Automatically snaps images at preset intervals of 1 minute to 1 hour, with 2 time slots to monitor dusk and dawn movement.



Night vision shutter speed adjustment for ultimate stop action images.



All Trophy Cams have the option to automatically embed GPS coordinates to make tracking game movement and camera placement simple.



NEW Trophy Cam™ HD 2014

119576 (Brown)



NEW Trophy Cam™ HD 2014

119677 (AP Xtra Camo)



NEW 1080P Trophy Cam™ HD MAX 2014

119678



FEATURES

33 No-Glow Black LEDs ▶ 3.5 or 8 MP high-quality full color resolution* ▶ 24 HR/Day/Night mode ▶ External power compatible ▶ Adjustable PIR (Lo/Med/High) or Auto PIR ▶ 0.3-second trigger speed ▶ Programmable trigger interval: 1 sec. to 60 min. ▶ Multi-image mode: 1-3 images per trigger Video length: 1 second to 60 seconds, programmable ▶ Field Scan time-lapse mode takes images at pre-set intervals, 1 minute to 60 minutes ▶ Temperature range -20°C to 60°C ▶ PIR sensor is motion activated out to 60 ft. / 18 m ▶ Runs up to one year on one set of batteries ▶ Adjustable web belt and 1/4-20 socket ▶ ARD LED shield (Anti-Reflection LED Cover) ▶ SD card slot (SD card up to 32 GB) ▶ Hybrid capture mode - video and photo for every trigger



EXCLUSIVE FEATURES ON ALL NEW TROPHY CAM HD CAMERAS



NEW Latch System



ARD (Anti-Reflection LED Cover)

Security Case

119657C (Compatible with 119676, 119677)
119658C (Compatible with 119678)



Solar Panel

119656C (Compatible with 119676, 119677, 119678)

Allows you to extend battery life for high traffic or extreme use cameras.



MODEL	RESOLUTION SETTINGS	PIR SENSOR	NIGHT VISION FLASH	LCD DISPLAY	DATE/TIME STAMP	NAME/TEMP/ MOON/GPS STAMP	POWER SUPPLY	BATTERY LIFE	VIDEO RESOLUTION	VIDEO LENGTH (SECONDS)	SD CAPACITY	FIELD SCAN 2X	AUDIO RECORD	BARO STAMP	HYBRID MODE
*119676	3.5, 8MP**	Low/Med/High/Auto	No-Glow / 60' / 18 m	86W Text LCD	Yes	Yes	AA (4-8)	Up to 1 year	1280x720p	Up to 60	32 GB	Yes	Yes	No	Yes
*119677	3.5, 8MP**	Low/Med/High/Auto	No-Glow / 60' / 18 m	86W Text LCD	Yes	Yes	AA (4-8)	Up to 1 year	1280x720p	Up to 60	32 GB	Yes	Yes	No	Yes
*119678	3.5, 8MP**	Low/Med/High/Auto	No-Glow / 60' / 18 m	86W Text LCD	Yes	Yes	AA (4-12)	Up to 1 year	1920x1080p	Up to 60	32 GB	Yes	Yes	Yes	Yes

* NEW FOR 2014. ** True 5MP sensor with 3MP compression and 8MP interpolation.



PROUD USA COMPANY

TOWERING OVER THE INDUSTRY, ONE BREAKTHROUGH AT A TIME.

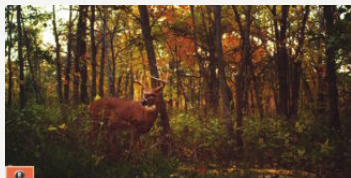
The best keep getting better and farther ahead of the rest. As the industry strains to reach its one-year battery life and quick trigger speed, our Trophy Cam™ keeps pushing the benchmark for dependability and performance ever higher. Every 2013 model includes the best features from seasons past - True HD video with audio record, Field Scan 2x and Hyper Night Vision - plus a host of upgrades. Like Hybrid Capture Mode, for capturing video and images simultaneously, all in stunning clarity and detail. Freeze Frame Shutter, an anti-blur setting for Night Vision Shutter, with High/Med/Low speed settings. Hyper PIR motion sensor, which reaches an incredible 60 feet / 18 meters. And more innovation than we can fit here. More images, better images, from the most reliable, hardest-working trail-cam in the woods.



FEATURES

3.5 or 8 MP high-quality full color resolution* ▶ 24 HR/Day/Night mode
 External power compatible ▶ Adjustable PIR (Lo/Med/High) or Auto PIR ▶
 0.6-second trigger speed ▶ Programmable trigger interval: 1 sec. to 60 min.
 ▶ Multi-image mode: 1-3 images per trigger Video length: 1 second to 60 seconds, programmable ▶ Field Scan time-lapse mode takes images at pre-set intervals, 1 minute to 60 minutes ▶ Temperature range -20° F to 160° F ▶ PIR sensor is motion activated out to 60 ft. / 18 m ▶ Runs up to one year on one set of batteries ▶ Adjustable web belt and 1/4-20 socket ▶ SD card slot ▶ Hybrid capture mode - video and photo for every trigger

*True 5 MP sensor with 3 MP compression and 8 MP interpolation.



New Image Stamp. Images from Black LED Trophy Cams display date/time/moon/temp/name/barometric pressure. All others highlight date/time/moon/temp/name.

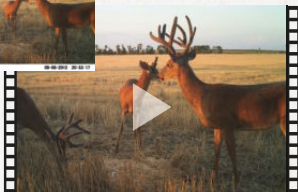
NEW Trophy Cam™ HD 2013

119537 (brown)
 119547 (AP Xtra Camo)





NEW
Trophy Cam™
HD 2013
119547 (camo)



TROPHY CAM HD



All Trophy Cams are capable of capturing 720p HD video – with sound – for a brilliant connection to the game you hunt.



A quantum leap in distance and brightness, this new system ensures the sharpest after-dark imagery.



Automatically snaps images at preset intervals of 1 minute to 1 hour, with 2 time slots to monitor dusk and dawn movement.



All Trophy Cams have the option to automatically embed GPS coordinates to make tracking game movement and camera placement simple.



Night vision shutter speed adjustment for ultimate stop action images.



Hybrid PIR. Motion sensor reaches out to 60 feet / 18 meters or beyond and offers dramatically expanded coverage area over leading competitors. This new system's built-in temperature sensor self-regulates the passive infrared sensor for more consistent function in all conditions.



Hybrid Capture Mode. Capture full resolution images and video simultaneously on every trigger.



Now in 16:9 format and 4:3 format.



Allows you to adjust flash power for different setups to conserve battery power where applicable.

MODEL	RESOLUTION SETTINGS	PIR SENSOR	NIGHT VISION FLASH	LCD DISPLAY	DATE/TIME STAMP	NAME/TEMP/MOON/GPS STAMP	POWER SUPPLY	BATTERY LIFE	VIDEO RESOLUTION	VIDEO LENGTH (seconds)	SD CAPACITY	FIELD SCAN 2x	AUDIO RECORD	BARO STAMP	HYBRID MODE
*119537	3, 5, 8MP**	Low/Med/High/Auto	32 LED 60 ft / 180 m	86W Text LCD	Yes	Yes	AA (4-8)	Up to 1 year	1280x720p	Up to 60	32 GB	Yes	Yes	No	Yes
*119547	3, 5, 8MP**	Low/Med/High/Auto	32 LED 60 ft / 18 m	86W Text LCD	Yes	Yes	AA (4-8)	Up to 1 year	1280x720p	Up to 60	32 GB	Yes	Yes	No	Yes

* NEW FOR 2014. ** True 5 MP sensor with 3 MP compression and 8 MP interpolation.



PROUD USA COMPANY

CREATE YOUR OWN NATURE SHOW, MINUS THE COMMERCIALS.

Capture and preserve the wonder of nature in stunning HD. Durable, reliable "camera trap" records video and images you may never get in person, all in breathtaking high definition. NatureView HD Max delivers the sharpest views by recording in True 1080p HD, with Close Focus capability to maintain crystal-clear depth of field no matter how cozy creatures get. 32 no-glow LEDs enhance stealth, while Day/Night/24HR options offer specialized functions based on time of day. For nocturnal activity, all NatureView cams feature an incredible Hyper NightVision 60 ft / 18 m Flash, while capturing audio with video to bring nature's late show brilliantly to life.



FEATURES

3.5 or 8MP high-quality full color resolution* ▶ 24 HR/Day/Night mode ▶ External power compatible ▶ Adjustable PIR (Lo/Med/High) or Auto PIR ▶ 0.7-second trigger speed ▶ Programmable trigger interval: 1 sec. to 60 min. ▶ Multi-image mode: 1-3 images per trigger ▶ Video length: 1 second to 60 seconds, programmable ▶ Field Scan time-lapse mode takes images at pre-set intervals, 1 minute to 60 minutes ▶ Temperature range -20°C to 60°C ▶ PIR sensor is motion activated out to 60 ft / 18 m. ▶ Runs up to one year on one set of batteries ▶ Adjustable web belt and 1/4-20 socket ▶ SD card slot ▶ Hybrid capture mode - video and photo for every trigger

* True SMP sensor with 3MP compression and 8MP interpolation.



NatureView Cam HD

119438

Captures incredible 720p HD video, 8MP images and features audio record in video mode.





NatureView Cam HD Max

119439

119440 (with 2.4" color viewer)

Breathtaking 1080p HD video make this the best choice for the most stunning views. Includes everything in our standard model, plus a host of upgrades. Includes close focus lenses (25cm and 46cm focus). Also available with a 2.4"/6.4 color LCD view screen.



Sign up and share with the community all your pictures and videos from your NatureView Cam on www.natureviewcam.com



MODEL	RESOLUTION SETTINGS	PIR SENSOR	NIGHT VISION FLASH	LCD DISPLAY	DATE/TIME STAMP	DATE/TEMP/MOON/GPS STAMP	POWER SUPPLY	BATTERY LIFE	VIDEO RESOLUTION	VIDEO LENGTH (seconds)	SD CAPACITY	FIELD SCAN 2x	AUDIO RECORD	BARO STAMP
119438	3, 5, 8MP*	Low/Med/High/Auto	32 LED, 60 ft / 18 m	86W Text LCD	Yes	Yes	AA (4-8)	Up to 1 year	1280x720p	Up to 60	32 GB	Yes	Yes	No
119439	3, 5, 8MP*	Low/Med/High/Auto	32 LED, 60 ft / 18 m	86W Text LCD	Yes	Yes	AA (4-12)	Up to 1 year	1920x1080p	Up to 60	32 GB	Yes	Yes	No
119440	3, 5, 8MP*	Low/Med/High/Auto	32 Black LED, 60 ft / 18 m	Color Image LCD	Yes	Yes	AA (4-12)	Up to 1 year	1920x1080p	Up to 60	32 GB	Yes	Yes	no

*True 5 MP sensor with 3 MP compression and 8 MP interpolation.



PROUD USA COMPANY

EVERYTHING YOU NEED TO PLAN THE PERFECT SHOT.

Set your sights on success with the Bushnell® Trophy Cam.™ For one, it provides more top-tier, exclusive features than any other trail camera in its class. Like a wide variety of adjustable still image and camera settings that provide one to three images per trigger, or anywhere from five to 60 seconds of video at a time. And with an adjustable trigger interval of one to 60 seconds, you can ensure you won't miss that perfect picture of your quarry. Plus, the three, five or six-megapixel, high quality and full-color resolution and automatic day/night sensor ensure crisp, clean views at any time. And efficient! It'll go for up to 12 months on one set of batteries. No wonder the Trophy Cam continues to lead the trail camera industry.

NEW Trophy Cam

119636



FEATURES

3, 5 or 6 MP high-quality full color resolution ▶ Day/night autosensor ▶ External power compatible ▶ Adjustable PIR (Lo/Med/High/Auto) ▶ 0.8-second trigger speed Programmable trigger interval: 1 sec. to 60 min. ▶ Multi-image mode: 1-3 images per trigger ▶ Video length: 1 second to 60 seconds, programmable ▶ Field Scan time-lapse mode takes images at pre-set intervals, 1 minute to 60 minutes Temperature range -20° C to 60° C ▶ PIR sensor is motion activated out to to 60 ft. / 18m ▶ Runs up to 12 months on one set of batteries ▶ Adjustable web belt and 1/4-20 socket ▶ SD card slot (Max 32 GB)

MODEL	RESOLUTION SETTINGS	PIR SENSOR	HYPER NIGHT VISION FLASH	LCD DISPLAY	DATE/TIME/TEMP/ MOON STAMP	POWER SUPPLY	BATTERY LIFE	VIDEO RESOLUTION	VIDEO LENGTH (seconds)	SD CAPACITY	FIELD SCAN
*119636	3, 5, 6MP	Low/Med/High/Auto	32 LED / 60' / 18m	B&W LCD	Yes	AA (8)	Up to 12 mo.	720x480p	Up to 60	32GB	2x

* NEW FOR 2014



Security Case

119653C (Compatible with 119537, 119547, 119438, 119636)
119654C (Compatible with 119439, 119440)

Allows high level of protection from game.
Can be used with Deluxe Tree Bracket.
Can be secured with lag screws with Master Python Lock. Comes with keyed padlock.

Deluxe Tree Bracket

119652C

Screws into any tree. 1/4-20 threads into bottom of Trophy Cam.™
Adjustable head allows mounting flexibility. (Compatible with all Trophy Cams).



NEW Surveillance Cam™ with Wi-Fi No-Glow Black LED

119519



Eye-Fi® Mobi
+ WiFi Card included



Metal security case

119516C



Screw-in Camera Bracket with adjustable head

119515C



Adjustable Security Cable lock

119518C



PEACE OF MIND THAT FITS IN THE PALM OF YOUR HAND.

Introducing our new WiFi model for 2014!

The technology you need to protect what is rightfully yours. Keep a watchful eye over your property with our simple-to-use, easy-to-install and always-reliable surveillance cam. Available in No-Glow LEDs, it provides razor-sharp clarity and full color resolution. Plus a rugged, weatherproof design, covert size and the assurance of a 6 month-plus lifespan on only 4 AA batteries. We also offer a complete team of surveillance cam accessories for maximum security and peace of mind, all at an affordable price.

FEATURES

20 No-glow black LEDs ▶ 3, 5 or 6 MP high-quality full color resolution*

▶ Audio record ▶ Day/night autosensor ▶ External power compatible
▶ Adjustable PIR (Lo/Med/High) or Auto PIR ▶ PIR sensor is motion activated out to 35 ft./10m ▶ 1.6-second trigger speed ▶ Adjustable photo delay ▶ Multi-image mode: 1-3 images per trigger ▶ Video with sound (640x480 p) ▶ Video length: 1 second to 60 seconds, programmable ▶ Time-lapse mode ▶ Recent image mode (managed storage space keeps only latest images) ▶ Temperature range -20° C to 60° C ▶ 4 AA batteries (not included) ▶ Runs up to 6 months on one set of batteries ▶ Adjustable web belt and 1/4-20 socket ▶ Includes 90-degree pivoting bracket & 2GB SD Card ▶ SD card slot (up to 32 GB)

* True 5 MP sensor with 3 MP compression and 6 MP



MODEL	RESOLUTION SETTINGS	PIR SENSOR	NIGHT VISION FLASH	LCD DISPLAY	DATE/TIME STAMP	MOON STAMP	POWER SUPPLY	BATTERY LIFE	VIDEO RESOLUTION	VIDEO LENGTH (seconds)	SD CAPACITY	FIELD SCAN 1x	AUDIO RECORD	HYBRID MODE
*119519	3, 5, 6MP**	Low/Med/High/Auto	20 Black LEDs, 35' / 10 m	B6W Text LCD	Yes	Yes	4 AA	Up to 6 months	640x480p	Up to 15	32 GB	Yes	Yes	No

* NEW FOR 2014. ** True 5 MP sensor with 3 MP compression and 6 MP interpolation.



PROUD USA COMPANY

	Surveillance Cam	Trophy Cam	Trophy Cam HD 2013	Trophy Cam HD Camo 2013	Trophy Cam HD 2014	Trophy Cam HD Camo 2014	Trophy Cam HD Max 2014	NatureView Cam HD	NatureView Cam HD Max	NatureView Cam HD Max (w/ Viewscreen)
Model	119519	119636	119537	119547	119676	119677	119678	119438	119439	119440
Field Scan w/ Live Trigger	1x	2x	2x	2x	2x	2x	2x	2x	2x	2x
Resolution Settings	2, 4, 6MP*	3.5, 6MP**	3.5, 8MP**	3.5, 8MP**	3.5, 8MP**	3.5, 8MP**	3.5, 8MP**	3.5, 8MP**	3.5, 8MP**	3.5, 8MP**
Date/Time Stamp	x	x	x	x	x	x	x	x	x	x
Audio Record	x	x	x	x	x	x	x	x	x	x
Video Resolution	640x480p	720x480p	1280x720 HD	1280x720 HD	1280x720 HD	1280x720 HD	1920x1080 HD	1280x720 HD	1920x1080 Full HD	1920x1080 Full HD
Trigger Speed	1.5 second	0.8 second	0.6 second	0.6 second	0.3 second	0.3 second	0.3 second	0.7 second	0.7 second	0.7 second
Hybrid Capture mode	x		x	x	x	x	x		x	x
Freeze Frame Shutter			x	x	x	x	x		x	x
PIR Range	35' / 10m	60 ft. / 18m	80 ft. / 24m	80 ft. / 24m	60 ft. / 18m	60 ft. / 18m	60 ft. / 18m	45' ft. / 15m	60 ft. / 18m	60 ft. / 18m
Night Vision Flash Distance	35' / 10m	60 ft. / 18m	60 ft. / 18m	60 ft. / 18m	60 ft. / 18m	60 ft. / 18m	60 ft. / 18m	60 ft. / 18m	60 ft. / 18m	60 ft. / 18m
Adjustable PIR		x	x	x	x	x	x	x	x	x
Auto PIR			x	x	x	x	x	x	x	x
Hyper PIR		x	x	x	x	x	x		x	x
Multi Flash Mode			x	x	x	x	x	x	x	x
Viewer color LCD screen										x
Widescreen Images (16/9)			x	x	x	x	x	x	x	x
Temp/Moon Stamp	x	x	x	x	x	x	x	x	x	x
Name Stamp		x	x	x	x	x	x	x	x	x
GPS Geotag (manual)			x	x	x	x	x	x	x	x
Baro pressure Stamp							x			
LED Number/Type	20/No-Glow	32/Low-Glow	32/Low-Glow	32/Low-Glow	33/No-Glow	33/No-Glow	33/No-Glow	32/Low-Glow	32/No-Glow	32/No-Glow
ARD LED Shield					x (removable)	x (removable)	x (removable)			
SD Card Capacity	32GB	32GB	32GB	32GB	32GB	32GB	32GB	32GB	32GB	32GB
Batteries	4-AA	4-8AA	4-8AA	4-8AA	4-8AA	4-8AA	4-12AA	4-8AA	4-12AA	4-12AA
Model for Security	x				x	x	x			
Solar Panel compatible (119656C)					x	x	x			
Security Case	119516C	119653C	119653C	119653C	119657C	119657C	119658C	119653C	119654C	119654C

*True 2 MP sensor with 4 MP or 6 MP interpolation. **True 5 MP sensor with 3 MP compression and 8 MP interpolation.

TRAIL CAMERA. A combination of digital imaging technology and passive infrared sensors, trail cameras give you the ability to monitor the woods 24/7. The built-in camera is triggered when an animal passes within the sensor's coverage area, and the photo or short movie clip is stored on an SD card. Nighttime images are captured with a night vision LED flash.

Hyper PIR. Extended coverage range for camera PIR sensor out to 60 feet / 18 m or beyond.

Freeze Frame Shutter. Night vision shutter speed adjustment for ultimate stop action images.

Hybrid Capture Mode. Capture full resolution images and video simultaneously on every trigger.

Auto PIR. This new system's built-in temperature sensor self-regulates the passive infrared sensor for more consistent function in all conditions.

Battery Life. Time the camera will function in the field. Dependent on temperature, number of images and number of flashes during that time.

Embedded GPS Geotag. Each 2013 & 2014 Trophy Cam™ has the option to embed GPS coordinates to make tracking animals and camera placement simple.

Field Scan 2x Time-Lapse Mode. Time-lapse technology automatically snaps images at preset intervals of one minute to one hour, within the hours of your choice. Now with two available

time slots so you can monitor dusk and dawn movement. Because it's not triggered by game, it provides the widest viewing area possible.

But unlike all other time-lapse cameras, its simultaneous live trigger will still capture images of anything that walks by.

Image. A digital picture recorded on the SD card when motion is sensed. Images are taken at the desired delay between images.

Hyper Night Vision. A quantum leap in distance and brightness, this new system ensures the sharpest after-dark imagery.

Image Delay. Delay between images taken by the camera. This is user set based on wildlife activity in the area.

IR Flash. LED night vision flash. Sends a burst of infrared energy that is invisible to the human eye. Especially useful for night photos when a visible flash is undesirable, such as in high-pressure hunting areas.

No-Glow Black LEDs. Completely invisible to animals and human-beings. Also ideal for security surveillance.

Multi-Flash Mode. Allows you to adjust flash power for different setups to conserve battery power where applicable.

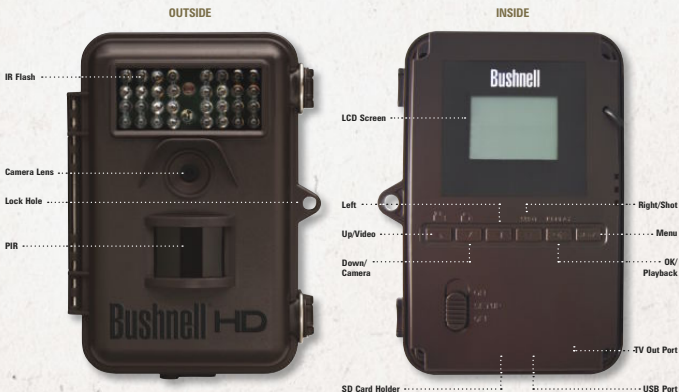
Passive Infrared Sensor (PIR). Security sensor device that senses motion like a typical motion detector. Requires infrared energy and motion to trip sensor.

Setup. Methods required for setting date/time and camera imaging settings.

SD Card. Memory card used to store images inside the game camera.

Trigger Speed. Time for camera to image from PIR activity being sensed. All Bushnell® cameras fire within one second or less.

Video Mode. The unit will take a video clip instead of a picture each time the camera engages.







Simplicity is the hallmark of genius - The less you have to learn, the shorter your path to success. Simply put, GPS equipment that's easy to use can be critical to ensuring a successful hunt or hike - and for guiding you safely back home. We are bringing this principle to life through our technologically superior GPS units. And once again, HuntTrack leads the way together with the new FishTrack®. An invaluable tool in every way, it gives you unrivaled ease of use, efficient navigation and a host of hunt-specific features. Joined by the award-winning D-TOUR, plus our diverse BackTrack™ lineup, these are the most reliable partners you'll find in the field. Stay on track and get home safe. Simple as it sounds.

FISHTRACK™

page 102



HUNTTRACK™

page 103



BACKTRACK™ D-TOUR & BEAR GRYLLS

page 104



BACKTRACK™

page 105



BACKTRACK™ BEAR GRYLLS

page 105



NEVER GET LOST AGAIN.
IT'S MORE SIMPLE THAN IT SOUNDS.

9





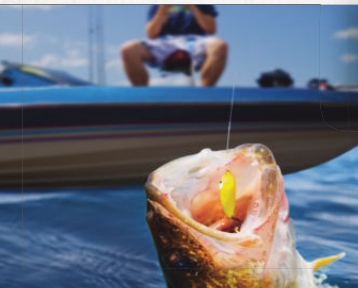
PROUD USA COMPANY

FIND YOUR WAY BACK.

Never get lost or lose track of your favorite fishing spot again. The Bushnell FishTrack is the newest personal GPS device that allows you to mark up to 25 locations so you can always get back to where you started. It's GPS without all the complications. In addition, FishTrack records your movements around the water and draws you a map of where you've been so you can get back to the dock even when the sun has set. You can upload your recorded trips and spots via a free app, even share them via email or Facebook™.



NEW
FishTrack
360610



FEATURES

Barometric pressure ▶ Predictive fishing information ▶ Lightning detector ▶
Solar/Weather Information ▶ Mark up to 25 locations ▶ Record up to 48 hours
of trip log ▶ Latitude/longitude ▶ Lightning detection up to 15 miles

MODEL	COLOR	SCREEN TYPE	BACKLIGHT	LOCATION MEMORY	BATTERY TYPE	WEIGHT (OZ. / G)	DIMENSIONS (IN. / MM)
*360610	Blue	Grayscale LCD	Yes	25	3 AAA	2.8 / 80	3.54(W) x 2.95(H) x .75(D) / 100 x 75 x 20

* NEW FOR 2014



THE MOST TRUSTWORTHY GUIDE IN THE WOODS.

Easy to use. Born to hunt. And delivers the world-renowned simplicity of our BackTrack™ units, with hunt-specific features that can only be gained from a lifetime in the woods. Plan your hunt with only a glance - sunrise, sunset, moonrise, moonset, barometric pressure, even periods of peak game movement. With five standard and 20 additional storable locations, follow a simple arrow with distance and direction of travel to your campsite, treestand, any spot you have marked. At the end of the day, its Trail Map feature logs exactly where you've been. With HuntTrack as your guide, it's sure to be a successful one.

HUNTTRACK APP KEY FEATURES

Barometric Pressure and weather data ▶ Sunrise/Sunset - Moonrise/Moonset ▶ Animal Activity Predictive Data ▶ Breadcrumb Map ▶ Geocaching Ability ▶ Go-To Feature ▶ Track Course Taken ▶ Length / Speed / Elevation of Trip ▶ Temperature during Trip

Hunttrack
360510



Create your own map with our new breadcrumb feature.

FEATURES

Logs up to 48 hours of trip data ▶ Stores and locates up to 25 locations ▶ Includes time (military or civilian)/temperature (fahrenheit or celsius)/altitude ▶ Distances in yards/miles or meters/kilometers ▶ Latitude and longitude coordinates Weather-resistant construction ▶ 1 year limited warranty

MODEL	COLOR	SCREEN TYPE	LOCATION MEMORY	BATTERY TYPE	WEIGHT (oz./g)	DIMENSIONS (in./mm)
360510	Brown	Grayscale LCD, Backlight	25	3 AAA	2.8 / 80	3.54(W) x 2.95(H) x .75(D) / 100 x 75 x 20



PROUD USA COMPANY

RECORD, UPLOAD AND SHARE.

Taking home the awards, getting you home safe. The Bushnell® D-TOUR seamlessly combines superior performance with remarkable simplicity like nothing you've ever experienced before. Featuring an available 48 hours of trip storage, you can easily upload your tracks to any social media site, and share it with your buddies. Five storable locations (10 for Bear Grylls Edition) guide you to your campsite, trailhead or whatever location you have marked with the push of a button. And you can confidently navigate through any terrain with its wide-array of features, including a self-calibrating digital compass, time, temperature, elevation, and latitude/longitude coordinates. Housed in a lightweight, rugged frame, the Bushnell® D-TOUR reliably masters any environment, and makes it look easy.



FEATURES

Logs up to 48 hours of trip data ▶ Stores and locates up to five locations (10 for Bear Grylls edition) ▶ Includes time (military or civilian)/ temperature (fahrenheit or celsius)/altitude ▶ Distances in yards/ miles or meters/kilometers ▶ Latitude and longitude coordinates ▶ Weather-resistant construction ▶ Self-calibrating digital compass ▶ High sensitivity SiRF Star IV GPS receiver ▶ Operates on 3 AAA batteries (not included) ▶ LED backlight ▶ Auto Shutoff ▶ +/- 5 yards/m accuracy



Home Base



Car



Wherever



Flag



Bullseye

Your choice of five waypoint icons provides quick reference in the field.



BackTrack™ D-TOUR
360315



BackTrack™ D-TOUR
360305

NEW
BackTrack D-TOUR 36031186



OVERLAY YOUR ROUTE ON GOOGLE® MAPS AUTOMATICALLY!

1. Record your trip
2. Register on backtracktour.com
3. Download the application
4. Plug the D-Tour to your PC or MAC® and launch the application



D-TOUR Armband
360350

One-size-fits-all, made with water-resistant neoprene, and featuring vertical or horizontal positioning.



D-TOUR Bike Mount
360351

Perfect to mount your BackTrack™ D-Tour on your bike to check speed, distance or direction.

MODEL	COLOR	SCREEN TYPE	LOCATION MEMORY	BATTERY TYPE	WEIGHT (oz./g)	DIMENSIONS (in./mm)
360315	Green	Grayscale LCD, Backlight	5	3 AAA	2.8 / 80	3.9(W) x 2.6(H) x .8(D) / 100 x 75 x 20
360305	Red	Grayscale LCD, Backlight	5	3 AAA	2.9 / 80	3.9(W) x 2.6(H) x .8(D) / 100 x 75 x 20
*36031186	Black/Orange	Grayscale LCD, Backlight	10	3 AAA	2.9 / 80	3.9(W) x 2.6(H) x .8(D) / 100 x 75 x 20

* NEW FOR 2014

THE NEXT GENERATION OF SUPER-EFFICIENT NAVIGATION.

Introducing the next generation BackTrack™, now better than ever.

The original BackTrack forever changed the game with its unmatched ease of use. The BackTrack™ is now even more streamlined - 20% lighter, enhanced with an ergonomic shape and improved design. Utilizing GPS technology in its most basic format, it has just two buttons and stores up to three locations. At the end of the day, simply select your desired location, and the unit displays direction and distance of travel. The BackTrack™ has a self-calibrating digital compass and backlit display you love about the original BackTrack™.



BackTrack™
360411

Just mark your location and BackTrack will help you get back to where you started.

FEATURES

Store and locate up to three locations ▶ Utilizes the latest digital technology ▶ High sensitivity u-blox 6 GPS receiver ▶ Self-calibrating digital compass. Provides an accurate heading while standing still ▶ Operates on 2 AAA batteries (not included) ▶ Compact size stores easily in your pocket or purse ▶ LED backlight ▶ 10 minute Auto Shutoff ▶ +/-5 yds/m accuracy

NEW
Bear Grylls
Edition
BackTrack™
360411BG



BackTrack™
360413



MODEL	COLOR	SCREEN TYPE	LOCATION MEMORY	BATTERY TYPE	WEIGHT (oz./g)	DIMENSIONS (mm)
*360411BG	Bear Grylls Edition	Greyscale LCD, Backlit	3	2 AAA	2.4 / 68	64(W) x 80(H) x 19(D)
360411	Black/Green	Greyscale LCD, Backlit	3	2 AAA	2.4 / 68	64(W) x 80(H) x 19(D)
360413	Orange/Black	Greyscale LCD, Backlit	3	2 AAA	2.4 / 68	64(W) x 80(H) x 19(D)

* NEW FOR 2014

IMAGEVIEW® SPOTTING SCOPE

Page 109





Safeguard every experience in stunning clarity and detail. For 65 years and counting, we've built our name by enhancing your time outdoors. But just as important to us is preserving the memories you make forever. Our ImageView® lineup serves as testament to this, combining the optical superiority we're known for, with the stunning imagery of a digital camera. With true magnification technology, each delivers bright, razor-sharp imagery that will last a lifetime - from any distance, all with the push of a button. Whether it's as extraordinary as an African safari, or as priceless as your child's first homerun, capture your experiences with the confidence and clarity you'll only find from Bushnell®.

A PICTURE IS WORTH
1,000 WORDS.
BUT "WOW"
WILL SUFFICE.

10

IMAGEVIEW® HD

page 108



SPOTTING SCOPE

page 109



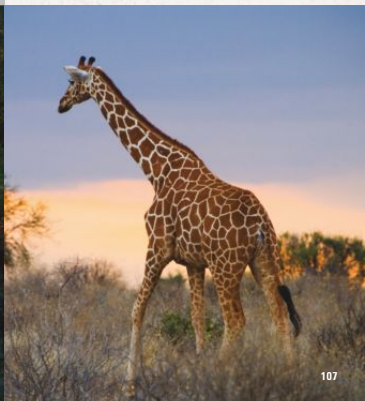
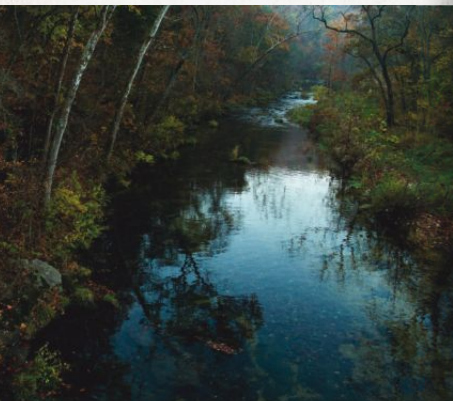
IMAGEVIEW®

page 110



TERMINOLOGY

page 112





PROUD USA COMPANY

MAKE YOUR OWN WEEKEND HIGHLIGHT REEL.

The Bushnell® ImageView HD Binoculars take the superior optical engineering that produces the world's brightest binoculars in the field. Combine it with our cutting-edge digital imaging technology and you have the ImageView HD with 12 MP! Whether you are capturing wildlife, at a sporting event, or capturing unique sights while traveling, the Imageview HD is perfect to take with you wherever you go!



8x 30mm - 12 MP
118328

This powerhouse performer takes brilliant photos up to 12 MP as well as 1280x720p HD video. Featuring binoculars with 8x magnification and SD card capacity up to 32GB

FEATURES

8x magnification ▶ 30mm objective lens ▶ BK-7 roof prisms ▶ Fully multi-coated optics ▶ 12 MP still pictures ▶ 32GB card capacity (not included) ▶ 1280x720p HD video ▶ Tripod socket ▶ Remote shutter cable ▶ USB Port ▶ USB cable included



MODEL	MAGNIFICATION X OBJ. LENS	SIZE CLASS	PRISM SYSTEM	PRISM GLASS	LENS COATING	FIELD OF VIEW (ft. @ 1000 yds. / m. @ 1000m)	CLOSE FOCUS (ft. / m)	EXIT PUPIL (mm)	EYE RELIEF (mm)	WEIGHT (oz. / g)	ADAPT TO TRIPOD	BATTERY
118328	8x 30	Full	Roof	BK-7	Fully	310 / 103	10 / 3	3.75	12	13.5 / 388	Yes	AAA (3)

WE WON'T TELL YOU WHAT A PICTURE'S WORTH.

But capture a moment of perfection and you just may think our ImageView® spotting scope is priceless. It's equal parts spotting scope and digital camera, and an instant pardon when you find yourself at a loss for words. The unique design fully integrates the camera with the scope's bright, multi-coated primary optics - once you have the scope focused, just switch over to the camera's 2.5" / 6.4 cm flip-up color LCD and capture flawless 5MP photos of your subject. The generous 32GB SD card capacity lets you take an entire trip's worth of high resolution digital images or even video clips back home to remember the moments you save.

FEATURES

15-45x zoom eyepiece (22x camera magnification) ▶ 70mm objective lens ▶ Exit pupil (mm): 4.6 @15x / 1.5 @45x ▶ 5MP resolution ▶ Switch easily from direct observation via zoom eyepiece to the digital camera's image on the large LCD display ▶ Multi-coated optics ▶ Video capable ▶ 2.5"/6.4 cm flip-up LCD ▶ 4x digital zoom ▶ SD card slot (max 32 GB) ▶ USB port ▶ Includes table tripod, remote shutter cable and soft case ▶ Requires 2 AA batteries

*Actual photo taken
with ImageView®
Spotting Scope.*



15-45x 70mm
111545

*Digital imaging spotting scope
with 5 megapixel image capture
and flip-up color LCD screen.*

MODEL	MAGNIFICATION	OBJECTIVE (mm)	LENS COATING	FIELD OF VIEW (ft. @100yds. / m @100m)	EXIT PUPIL (mm)	CLOSE FOCUS (ft. / m)	WEIGHT (oz. / g)	LENGTH (in. / mm)	WATERPROOF/ FOGPROOF	EYE RELIEF (mm)
111545	15-45x	70	Multi	121.5/40.5@15x / 52.6/17.5@45x	4.6@15x / 1.5@45x	26 / 7.9	25.4 / 711	11.6 / 295	No	11



PROUD USA COMPANY

SEIZE THE MOMENT. AND TAKE IT WITH YOU.

When memories fade, print another copy.

Preserve every experience with the pristine magnification and stunning clarity you'll only find from Bushnell's ImageView® binocular. We combined the outstanding optical performance we're known for with a digital camera, so you can see the moment in stunning clarity, and then capture it to memory with the touch of a button. Compact enough to fit in a pocket, it suits everyone from sports fans to adventure travelers. Remember yours, and unforgettable moments are a lot easier to come by.

FEATURES

1.3MP still pictures ▶ SD card slot (32GB capacity) ▶
Tripod socket ▶ Remote shutter cable ▶ USB port ▶
USB cable included



ImageView™
10x 25mm
111026



NO MAGNIFICATION

(picture taken with typical digital camera)



3x DIGITAL CAMERA

(Enlarged to match ImageView photo)

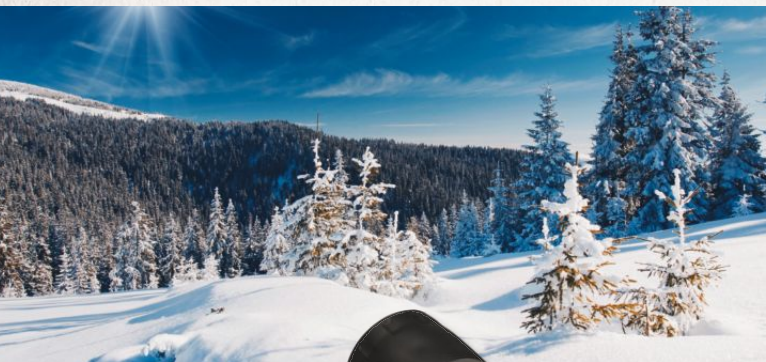


IMAGEVIEW PHOTO

(Taken at same time)

THE BUSHNELL IMAGEVIEW DIFFERENCE

The lenses on typical digital cameras simply do not provide enough magnification to deliver a real close-up view of distant subjects. Blowing up the image (cropping and enlarging) using computer software simulates a more powerful lens, but with a great reduction in quality. Our ImageView digital imaging binoculars capture the image through their 8x camera optics. This means your photo subjects will actually appear eight times closer (not possible with a "3x" or "5x" zoom camera lens), and will be much sharper than what you get by trying to "blow up" part of the photo from a regular digital camera. The comparison above shows the dramatic difference.



ImageView™
10x 25mm
111024ML

FEATURES

10x magnification ▶ VGA still pictures ▶ Video 320x240 (10fps) ▶
8MB internal memory ▶ SD card slot (2GB capacity) ▶ USB cable ▶
Softcase

MODEL	MAGNIFICATION X OBJ. LENS	SIZE CLASS	PRISM SYSTEM	PRISM GLASS	LENS COATING	FIELD OF VIEW (h @ 1000ft / m @ 1000m)	CLOSE FOCUS (ft. / m)	EXIT PUPIL (mm)	EYE RELIEF (mm)	EYECUPS	WEIGHT (oz. / g)	ADAPT TO TRIPOD	BATTERY
111024ML	10x 25	Compact	Roof	BK-7	Fully	288 / 97	18 / 6	2.5	9.8	Fold-Down	8.9 / 254	No	AAA (2)
111026	10x 25	Compact	Roof	BK-7	Fully	290 / 97	18 / 6	2.5	10	Fold-Down	10 / 283	No	AAA (2)



DIGITAL IMAGING. Like the film camera, digital imaging uses a lens to focus the image on a focal plane. While the film camera relies on film to capture the image, the digital uses a sensor. As light strikes the array of picture elements (pixels) that make up the sensor, it's converted to a current that's passed on to a digital or A-D converter. From the A-D converter, algorithms are applied to the signal, converting it to a digital image file.

Digital Imaging Sensors

These are silicon chips consisting of millions of tiny photo diodes, which convert light into an electronic signal. A CMOS sensor is used in Bushnell® imaging products.

File Compression or "Quality"

In addition to high- and low-resolution settings, many digital cameras provide options for selecting the amount of file compression applied when photos are stored in memory. Higher-quality settings use less compression, but take up more storage space.

Flash Memory

Flash memory is "non-volatile," meaning it retains the photo files and user settings even if the power source is removed for a long period of time. Many cameras have electronic components that preserve the memory contents for a few minutes to allow time to change batteries. However, it's always wise to download photos before changing batteries or storing the camera away if you are using internal memory.

Interpolation

A method of increasing the number of pixels in an image after it is photographed. The pixels actually captured by the camera's sensor are rapidly analyzed by software that creates and adds new similar pixels to the photo file. Some Bushnell imaging optics provide user options for higher interpolated resolution settings.

Pixels and Megapixels

Pixels are the tiny squares of color - like dots on a newspaper photo or grains on a photographic print - that make up a digital image. The higher the pixel count, the higher the photographic resolution. A megapixel (MP) equals one million pixels.



Resolution and File Size

The number of pixels used to produce a digital photo is the primary factor that determines resolution, or ability to reproduce fine detail. More pixels equal higher resolution and a larger data file.

Storage Cards: Digital "Film"

These are small removable "flash" memory devices used to hold image data from a digital camera, reducing or eliminating the need for high-capacity internal memory. All Bushnell digital imaging optics have a slot for an SD (Secure Digital) card, the most common type currently used.

Sync Focus

Now on our ImageView® spotting scope and Instant Replay™ binoculars, the Sync Focus feature is a parallel focus system that sharpens the digital image and the image through the scopes or binos optics simultaneously. The synchronized light path also permits the user to switch between viewing through the camera's LCD and the scope's or binocular's eyepiece.

USB Mass Storage

Cameras with USB mass storage don't need a driver for Windows XP, Vista or Windows 7. Connect the camera to your PC and it will be identified as a "Removable Disk", just as if it were an external hard drive. Your photo files are stored in a folder on this "disk," and can be copied or moved to the location of your choice or opened directly from the camera within your photo software.

Camera Settings

The "default" automatic setting on digital cameras works fine in most situations, but some cameras will also let the user override "auto" and adjust one or more of the following if necessary or preferred:

EV (Exposure Value): Also known as exposure compensation. Allows setting deliberate under or overexposure by a fine amount, such as "+1.5 EV" (one and a half steps overexposed).

ISO (Sensitivity): As with film, low ISO numbers (100-200) will produce the highest quality but require the most light. Higher ISO settings will allow photos in low light without flash, or faster shutter speeds to stop action, but with increasingly noticeable digital "noise."

White Balance: Auto white balance identifies a white reference point (wall, clouds, etc.) in a scene and applies overall color correction if needed, so whites retain a neutral appearance. If this produces poor results, presets for daylight, cloudy, tungsten and fluorescent lighting are often available.

Special Features

Self Timer: When selected, the photo is taken following a short delay after the shutter button is pressed. Used to prevent camera shake or to include yourself in the photo.

Sequential Shot: Shoots a quick burst of multiple frames (usually 3-5 in a row) to increase chances of capturing the action.

Movie Mode: Allows the camera to shoot and play back short video clips. These are usually stored in the common "avi" format and can be played on any computer with Windows Media Player, QuickTime or other software.

PROUD USA COMPANY



Bushnell®

OUTDOORS



Designed for the modern outdoorsman, Bushnell Outdoors is a new collection of rugged and durable gear built to withstand the rigors of the trail, off-trail or wherever camp is pitched. The Bushnell Outdoors® collection features POWERSYNC® Solar Chargers and Battery Bar™, as well as the Off Trail optics and the new Rubicon™ line of lighting products.

POWERSYNC SOLAR CHARGER

page 114



POWERSYNC BATTERY

page 115



OFFTRAIL OPTICS

page 115



RUBICON FLASHLIGHTS

page 117



RUBICON HEADLAMPS

page 118



RUBICON LANTERNS

page 118



TERMINOLOGY

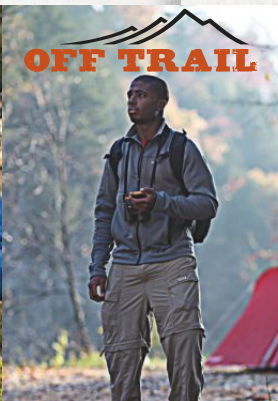
page 118

BUSHNELL OUTDOORS®

POWERSYNC

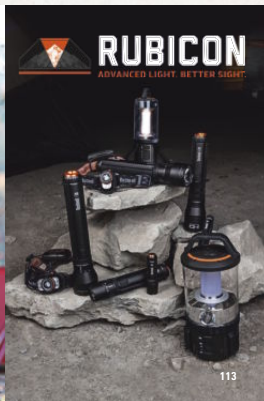


OFF TRAIL



RUBICON

ADVANCED LIGHT. BETTER SIGHT.





PROUD USA COMPANY

THE SIMPLE WAY TO POWER YOUR DEVICE OFF THE GRID.

POWERSYNC™

7 KEY DIFFERENCES :

- 1 - LIGHT WEIGHT**
MOST WATT CAPACITY PER POUND
- 2 - DURABLE**
WILL TAKE PUNCTURE AND KEEP WORKING
- 3 - COMPACT**
ONLY TECHNOLOGY THAT CAN ROLL UP
- 4 - DEPENDABLE**
WORKS IN LESS THAN FULL SUN : ANY ANGLE
- 5 - INTUITIVE**
BATTERY IS INTEGRATED, NO KIT REQUIRED
- 6 - SIMPLE**
BUILT-IN POWER GAUGE : PLUG AND PLAY
- 5 - RELIABLE**
DOES WHAT IT SAYS IT WILL DO



SolarWrap™ 250 PP1025ML

- Compact, lightweight continuous roll.
- Rugged streamlined Case for protection.
- Long-life li ion battery on-board.
- 1x USB output and micro USB input.

1x USB



**ON BOARD
BATTERY GAUGE**

BATTERY
CHARGE TIME

Wall

4 hrs

Sun

6 hrs

CHARGES
PER DEVICE*

Action Cam

2.5x

MP3 Player

2x

Smart Phone

1x

Collect and store, then charge on demand with PowerSync. It's the powerful, innovative technology behind our SolarWrap and Battery Bar systems. Set them out on a sunny day and in no time you have the power to charge your smart phone, camera, practically any device with a USB input. No sun ? No problem ! With a high capacity Li Ion rechargeable battery on-board, pre-charge them from home with a Micro USB input and you're ready to go.

SolarWrap™ Mini PP1010ML

- Ultra compact, lightweight continuous roll.
- Clips to backpack for charging on the go.
 - Long-life li ion battery on-board.
- 1x USB output and micro USB input.

1x USB

BATTERY
CHARGE TIME

Wall

4 hrs

Sun

10 hrs

CHARGES
PER DEVICE*

Action Cam

2.5x

MP3 Player

2x

Smart Phone

1x



MODEL	PRODUCT	HOURS TO CHARGE (wall / sun)	MP3 PLAYERS	SMART PHONES	ACTION CAMS	TABLETS	USB	ACCESSORIES INCLUDED
PP1025ML	SolarWrap 250	4 / 6	2x	1x	2.5x	-	1	Wall plug and micro USB cord
PP1010ML	MiniSolarWrap	4 / 10	2x	1x	2.5x	-	1	Micro USB cord

Battery Bar

PP2016ML

- Compact, durable, lightweight.
- Charges quickly, retains power.
- Powerful 1100mAh rechargeable battery.

2x USB



**ON BOARD
BATTERY GAUGE**

BATTERY
CHARGE TIME

Wall
6 hrs

CHARGES
PER DEVICE*

Action Cam
5x

MP3 Player
3x

Smart Phone
2x

Tablet
0.5x



POWERSYNC®

BATTERY BAR™

CHARGES PER DEVICE

MODEL	PRODUCT	HOURS TO CHARGE	MP3 PLAYERS	SMART PHONES	ACTION CAMS	TABLETS	USB	ACCESSORIES INCLUDED
PP2016ML	Battery bar USB2	6	3x	2x	5x	0.5x	2	Wall plug and micro USB cord

OFF TRAIL

**RUGGED GEAR FOR THE MODERN TECHNOLOGY-DRIVEN
OUTDOORSMAN, BUILT TO WITHSTAND THE RIGORS OF
THE TRAIL, OFF-TRAIL OR WHEREEVER YOU PITCH CAMP**

8x 32 mm monoculars

210832

- Bak4 Prism
- Multi-coated lens
- Wide-Angle



10x 28 mm binoculars

211028

- Bak4 Prism
- Fully multi-coated lens



8x 25 mm binoculars

218025

- Bak4 Prism
- Multi-coated lens



8x 32 mm binoculars

218032

- Bak4 Prism
- Fully multi-coated lens



OFF TRAIL®

OPTICS



PROUD USA COMPANY



RUBICON

ADVANCED LIGHT. BETTER SIGHT.

THE RUBICON™ LINE OF LIGHTING PRODUCTS IS A BLEND OF EXTREMELY HIGH LUMEN OUTPUT, 65 YEARS OF OPTICAL CRAFTSMANSHIP TO IMPROVE BEAM QUALITY OVER STANDARD LED LIGHTS, AND UNIQUE FEATURES THAT ARE ONLY AVAILABLE ON RUBICON PRODUCTS BY BUSHNELL OUTDOORS.

RUBICON

ADVANCED LIGHT. BETTER SIGHT.



1000L 9AA LED Flashlight

10T1000

- 1030 lumens - Ultra-extreme brightness.
- Bushnell T.I.R. optic - for better light output.
- Red halo - High/Low beam - Lock-out.



ADVANCED BUSHNELL T.I.R. OPTIC WITH
COLLIMATED BEAM TECHNOLOGY

BATTERY-SAVING LOCK-OUT FEATURE

RED HALO MODE

300HD 4AA HD Torche

10T300HDM

- Perfect beam technology.
- 330 lumens + Long run-time.
- Red halo - High/Low beam.



300L 4AA LED Flashlight

10T300ML

- 371 lumens - Intense brightness.
- Bushnell T.I.R. optic - For better light output.
- Red halo - High/Low beam - Lock-out.



200L 2AA LED Flashlight

10T200ML

- 236 lumens - Very bright.
- Bushnell T.I.R. optic - for better light output.
- Red halo - For extreme dark conditions.



100L 1AA LED Flashlight

10T100ML

- 152 lumens - Bright and compact.
- Bushnell T.I.R. optic - For better light output.
- Red halo - For extreme dark conditions.





PROUD USA COMPANY


AD
 AUTO DIMMING LIGHT

H150L 3AA Headlamp

10H150ML

- 173 lumens + 230L boost feature.
- Bushnell T.I.R. optic spotlight + flood mode.
- Red halo - High/low beam - Lock-out.


H250L 3AA Headlamp + Auto-DIM

10H250ML

- 250 lumens with patented auto-dimming.
- Bushnell T.I.R. optic spotlight + flood mode.
- Red halo - High/low beam - Lock-out.


A350L 4D Lantern + Spotlight

10A350ML

- 350 lumens output with spotlight.
- High/Low/Ultra-Low + Red Halo option.
- Change to spotlight with twist of collar.


A200L 4AA Compact Lantern

10A200ML

- 200 lumens output with red halo option.
- Legs fold down in use, fold up for storage.
- High/Low + Down beam option.
- Carabiner handle/hanger.



VISIT OUR WEBSITES



BUSHNELL GENERAL



www.bushnell.eu
www.bushnell-europe.co.uk



BUSHNELL TROPHY CAM



www.trophycam.eu
www.trophycam.co.uk
www.natureviewcam.com

Sign up and share with the community all your pictures and videos from your Trophy Cam Bushnell.



BUSHNELL GOLF



www.bushnellgolf.eu
www.bushnellgolf.co.uk
[@BushnellGolf](https://twitter.com/BushnellGolf)

Bushnell Outdoor Products Europe

4, rue Diderot

92 150 Suresnes - France

Tél : + 33 1 41 44 94 80

Fax : + 33 1 41 44 06 09

Email : contact@bushnell-europe.com**Bushnell Performance Optics Italy**

C.so Moncalieri 167

10133 Torino

Tel : + 39 011 661 85 83

Fax : + 39 011 661 87 68

Email : italia@bushnell-europe.com**Bushnell Performance Optics UK Ltd**

(including Ireland)

Unit C83 Barwell Business Park

Leatherhead Road

Chessington, Surrey, KT9 2NY

United Kingdom

Tel + 44 (0) 208 391 4700

Fax + 44 (0) 208 391 4733

Email : sales@bushnell-uk.co.uk**Bushnell Performance Optics South Africa t/a Ultimo**

Marlin House - Norbuy Office Park

372, Rivonia Boulevard - P.O.Box 51 - Rivonia 2128

Tel : + 27 11 785 4700

Fax : + 27 11 234 2962

Email : info@ultimo.co.za**Bushnell Performance Optics Germany GmbH**

An der Alten Spinnerei 1

83059 Kolbermoor b. Rosenheim

Tel : +49 8031 233 48 0

Fax : +49 8031 233 48 18

Email : info@bushnell-europe.com**Bushnell Outdoor Products Spain**

c/ Álava, 60-62 6º 1

Barcelona 08005 - Spain

Tel : + 34 93 486 48 00

Fax : + 34 93 309 29 11

Email : bushnellspain@bushnell-europe.com

Bushnell PRODUCT GUIDE OUTDOOR 2014

www.bushnell.euwww.bushnell-europe.co.uk100% ECOLOGICAL PAPER FROM
SUSTAINABLY MANAGED FORESTS
100% CHLORINE FREE (TCF)