

Sampling Video Scope

VS-100



Instruction Manual

www.datavideo-tek.com

Table of Contents

Warnings and Precautions	4
Warranty	5
Disposal	5
Packing List.....	6
Introduction	6
Features.....	7
Supported SDI / HD-SDI Input Video Formats	7
Example Set Up.....	8
Connections & Controls.....	9
Front & Rear Panels	9
VS-100 Output Display.....	10
Menu Control and Options.....	11
NEXT MODE	11
VIDEO DISPLAY.....	11
TOOLS	12
TRACE MEMORY.....	12
SET BANDWIDTH (VECTORSCOPE TOOLS)	12
SET UP BARS (VECTORSCOPE TOOLS).....	12
SET RGB / YCbCr (PARADE TOOLS).....	12
X ZOOM (WAVEFORM TOOLS).....	13
X DELAY (WAVEFORM TOOLS).....	13
AUDIO VOLUME	13
AUDIO CHANNEL	13
CONFIGURATION.....	14
VIDEO THUMBNAIL	14
SDI LOOPTHROUGH.....	14
CAPTURE	14

VS-100 Quick Start Guide	15
Black and White Balance Adjustment (VECTORSCOPE)	15
Luminance Adjustment (HISTOGRAM)	16
Luminance Adjustment (WAVEFORM MONITOR)	17
Colour /Hue Adjustment (PARADE RGB / YCbCr)	18
Camera output after adjustments (VECTORSCOPE)	19
VS-100 Advanced Application	20
RGB PARADE and White Balance Adjustment	20
Camera Noise.....	21
Comparing color saturation among cameras	22
Specifications	23
Service & Support	24

Disclaimer of Product and Services

The information offered in this instruction manual is intended as a guide only. At all times, Datavideo Technologies will try to give correct, complete and suitable information. However, Datavideo Technologies cannot exclude that some information in this manual, from time to time, may not be correct or may be incomplete. This manual may contain typing errors, omissions or incorrect information. Datavideo Technologies always recommend that you double check the information in this document for accuracy before making any purchase decision or using the product. Datavideo Technologies is not responsible for any omissions or errors, or for any subsequent loss or damage caused by using the information contained within this manual. Further advice on the content of this manual or on the product can be obtained by contacting your local Datavideo Office or dealer.

Warnings and Precautions

1. Read all of these warnings and save them for later reference.
2. Follow all warnings and instructions marked on this unit.
3. Unplug this unit from the wall outlet before cleaning. Do not use liquid or aerosol cleaners. Use a damp cloth for cleaning.
4. Do not use this unit in or near water.
5. Do not place this unit on an unstable cart, stand, or table. The unit may fall, causing serious damage.
6. Slots and openings on the cabinet top, back, and bottom are provided for ventilation. To ensure safe and reliable operation of this unit, and to protect it from overheating, do not block or cover these openings. Do not place this unit on a bed, sofa, rug, or similar surface, as the ventilation openings on the bottom of the cabinet will be blocked. This unit should never be placed near or over a heat register or radiator. This unit should not be placed in a built-in installation unless proper ventilation is provided.
7. This product should only be operated from the type of power source indicated on the marking label of the AC adapter. If you are not sure of the type of power available, consult your Datavideo dealer or your local power company.
8. Do not allow anything to rest on the power cord. Do not locate this unit where the power cord will be walked on, rolled over, or otherwise stressed.
9. If an extension cord must be used with this unit, make sure that the total of the ampere ratings on the products plugged into the extension cord do not exceed the extension cord's rating.
10. Make sure that the total amperes of all the units that are plugged into a single wall outlet do not exceed 15 amperes.
11. Never push objects of any kind into this unit through the cabinet ventilation slots, as they may touch dangerous voltage points or short out parts that could result in risk of fire or electric shock. Never spill liquid of any kind onto or into this unit.
12. Except as specifically explained elsewhere in this manual, do not attempt to service this product yourself. Opening or removing covers that are marked "Do Not Remove" may expose you to dangerous voltage points or other risks, and will void your warranty. Refer all service issues to qualified service personnel.
13. Unplug this product from the wall outlet and refer to qualified service personnel under the following conditions:
 - a. When the power cord is damaged or frayed;
 - b. When liquid has spilled into the unit;
 - c. When the product has been exposed to rain or water;
 - d. When the product does not operate normally under normal operating conditions. Adjust only those controls that are covered by the operating instructions in this manual; improper adjustment of other controls may result in damage to the unit and may often require extensive work by a qualified technician to restore the unit to normal operation;
 - e. When the product has been dropped or the cabinet has been damaged;
 - f. When the product exhibits a distinct change in performance, indicating a need for service.

Warranty

Standard Warranty

- Datavideo equipment is guaranteed against any manufacturing defects for one year from the date of purchase.
- The original purchase invoice or other documentary evidence should be supplied at the time of any request for repair under warranty.
- Damage caused by accident, misuse, unauthorized repairs, sand, grit or water is not covered by this warranty.
- All mail or transportation costs including insurance are at the expense of the owner.
- All other claims of any nature are not covered.
- Cables & batteries are not covered under warranty.
- Warranty only valid within the country or region of purchase.
- Your statutory rights are not affected.

Two Year Warranty

- All Datavideo products purchased after 01-Oct.-2008 qualify for a free one year extension to the standard Warranty, providing the product is registered with Datavideo within 30 days of purchase. For information on how to register please visit www.datavideo-tek.com or contact your local Datavideo office or authorized Distributors
- Certain parts with limited lifetime expectancy such as LCD Panels, DVD Drives, Hard Drives are only covered for the first 10,000 hours, or 1 year (whichever comes first).
- Any second year warranty claims must be made to your local Datavideo office or one of its authorized Distributors before the extended warranty expires.

Disposal



For EU Customers only - WEEE Marking

This symbol on the product indicates that it should not be treated as household waste. It must be handed over to the applicable take-back scheme for the recycling of Waste Electrical and Electronic Equipment. For more detailed information about the recycling of this product, please contact your local Datavideo office.

Packing List

Items	Description	Q'ty
1	VS-100 unit	1
2	Power adaptor 12V / 0.2A	1
3	Instruction Manual	1

Introduction

Video image quality is often determined by a combination of multiple factors such as camera alignment and calibration. The location of the production and the brands of connected video devices especially under Electronic Field Production (EFP) conditions can cause variable image quality in terms of brightness, colour saturation, and white balance between different video sources. Traditionally, experienced camera operators would align equipment before a production in order to avoid too much time and resources being spent on adjusting images in post production.

In order to make this alignment process easier and more efficient, Datavideo presents the VS-100, a cost-effective Sampling Video Scope. This unit provides quick, accurate and standardized ways to calibrate and align signals from cameras and other video equipment. Its small size and DC voltage input means that it can be a battery powered go-anywhere engineering tool when coupled with a HD / SD monitor like the Datavideo TLM-700HD or a rack based studio tool when paired with a TLM-702HD monitor. Alternatively it can be used with any HDMI or SDI monitor.

The VS-100 can be used to test and compare the accuracy of incoming video signals from cameras and/or connected equipment. The VS-100 can accept either SDI or HD-SDI input for signal analysis. The VS-100 can be set up to provide a clean video loop through on SDI/HD-SDI whilst still allowing video scope views on its HDMI output. Alternatively the scope view can also be displayed as a 1280 x 720 HD-SDI output.

Features

- Rugged and compact single unit that requires only an HD-SDI or HDMI monitor
- Menu choice of Vectorscope, Histogram, Waveform and Parade displays as well as clean Video Display output (SDI to HDMI conversion)
- SDI / HD-SDI input
- SDI / HD-SDI loop through – can provide clean pictures or video scope view
- Automatically detects and locks to NTSC, PAL or HD signals
- Embedded SDI audio monitoring with peak meter - 8 selectable channels
- Switchable 4:3 / 16:9 video thumbnail in video scope display
- Headphone jack audio monitoring socket with menu based volume control
- Save and Recall trace menu options for quick and easy overlay comparison of video traces
- Parade Display can be toggled between RGB and YCbCr
- Vectorscope can be toggled between 75% and 100% graticules/bars
- Waveform detail can be zoomed 33%, 50%, 67% and 100% - various parts of the waveform can then viewed by changing the X Delay value
- Capture sampling can be by Field1, Field 2 or Frame
- DC 12V operation makes the unit ideal for field or studio operation

Supported SDI / HD-SDI Input Video Formats

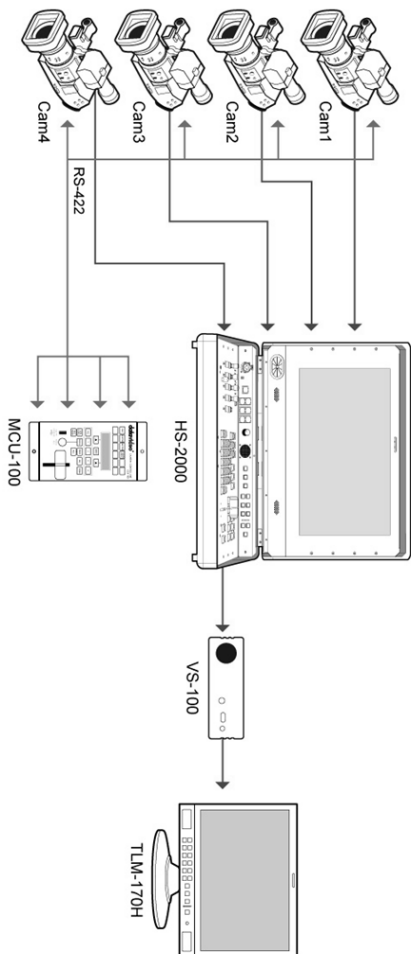
- 720 x 576i / 50 Hz (PAL)
- 720 x 480i / 60 Hz (NTSC)
- 720 x 576 / 25p
- 720 x 480 / 30p

- 1280 x 720p / 50 Hz
- 1280 x 720p / 60 Hz

- 1920 x 1080i / 50 Hz
- 1920 x 1080i / 60 Hz

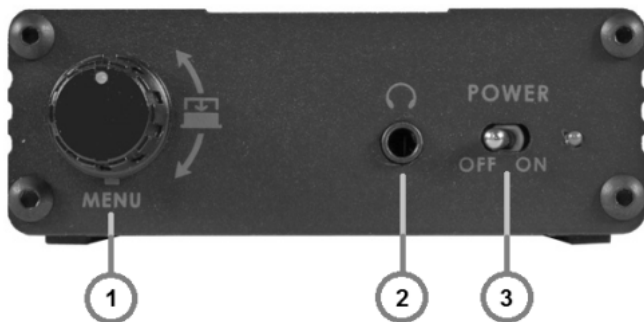
NOTE: All scope views are displayed at 1280 x 720 regardless of input video format.

Example Set Up

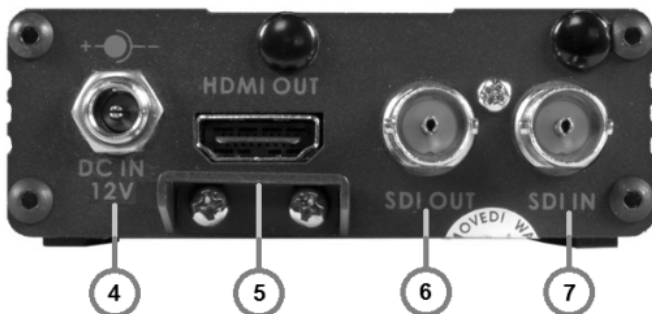


Connections & Controls

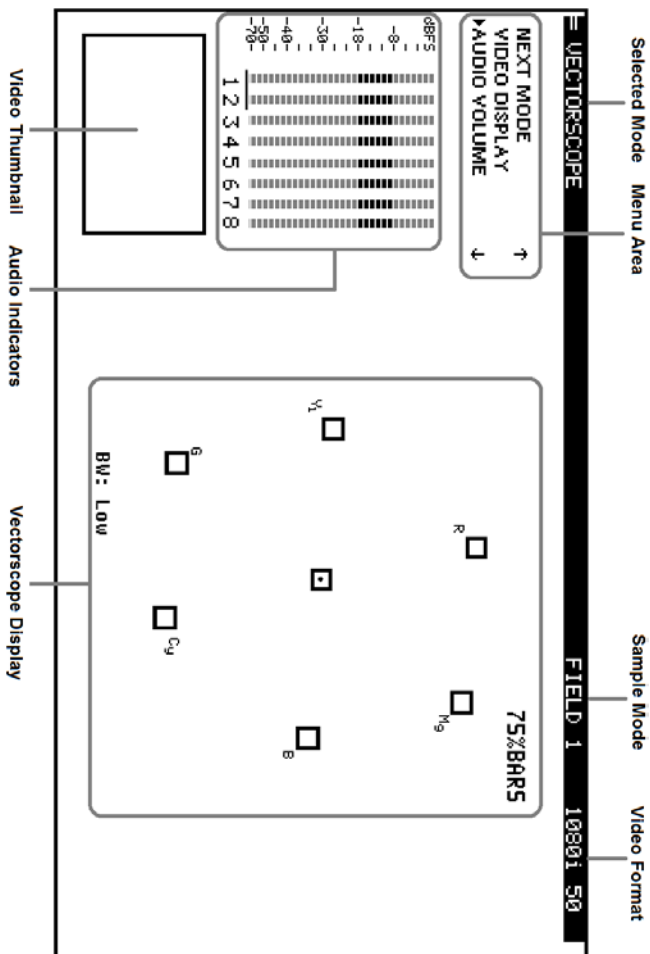
Front & Rear Panels



1. Menu dial and push to select button
2. 3.5mm jack socket for audio monitoring
3. Power ON / OFF switch with LED
4. DC 12V / 0.2 A (4W) input connector
5. HDMI output
6. SDI / HD-SDI output / clean loop through
7. SDI / HD-SDI input



VS-100 Output Display



Menu Control and Options

The VS-100 is a menu driven unit. The menu is viewed as part of the output display when it has been connected to a HDMI / SDI monitor (see page 9).

The menu options are scrolled by turning the Menu Dial to the left or right (See item 1 on page 8). A pointer (►) to the left of the menu options indicates which item is currently selected. To change / select a value gently press the Menu Dial in towards the VS-100 case, like a button.

If there are more options in the current menu then an arrow up or down may be displayed to the right of the Menu Area. To go back to an earlier menu select EXIT from the current options list.

The Main Menu options are:

TOOLS
NEXT MODE
VIDEO DISPLAY
AUDIO VOLUME
AUDIO CHANNEL
CONFIGURATION

NEXT MODE

When first switched on the VS-100 will display in the Vectorscope mode. Selecting NEXT MODE and pressing in the Menu Dial will cause the unit to display the next mode in the following order.

VECTORSCOPE
PARADE
WAVEFORM MONITOR
HISTOGRAM

NOTE: All scope views are displayed at 1280 x 720 regardless of input video format.

VIDEO DISPLAY

When this option is selected the VS-100 will display only the incoming video. All audio and video scope views will be hidden when this option is active. This option affects both the SDI loop through and the HDMI output. To return to a scope view once more press in or rotate the Menu Dial on the VS-100.

TOOLS

The TOOLS option is only available with certain VS-100 output displays. These are VECTORSCOPE, PARADE and WAVEFORM MONITOR.

VECTORSCOPE related TOOLS:

TRACE MEMORY
SET BANDWIDTH
SET UP BARS

PARADE related TOOLS:

TRACE MEMORY
SET RGB / YCbCr

WAVEFORM related TOOLS:

TRACE MEMORY
X ZOOM
X DELAY

TRACE MEMORY

This option allows the current VS-100 scope trace to be saved, recalled or cleared within the unit's memory. A saved or recalled trace will be displayed in green sample points and the live or current signals will be displayed in white sample points. Where the saved and current traces match sample points are displayed in Blue. In this way two sources can be compared or a single source can be checked to see if its output drifts during extended use.

SET BANDWIDTH (VECTORSCOPE TOOLS)

This option can be changed between LOW or FULL bandwidth. The LOW bandwidth option results in fewer sample points being displayed but still allows a good read of the incoming signals. The FULL bandwidth option results in all sample points being displayed.

SET UP BARS (VECTORSCOPE TOOLS)

This option allows the Vectorscope Graticule targets for each colour to be switched between the 75% and 100% colour bar positions. For most TV broadcast situations the Graticule targets should be set for 75% bars.

SET RGB / YCbCr (PARADE TOOLS)

This setting allows the parade displayed to be switched between RGB and component YCbCr values.

X ZOOM (WAVEFORM TOOLS)

This option allows the waveform display to be zoomed on the X Axis so a specific area can be examined in more detail. X ZOOM options are:

100% = The whole width of the waveform is displayed (normal view).

60% = Only 60% of the whole waveform is shown on the display. In this setting X DELAY can be used to scroll left and right across the waveform.

In this way the rest of the waveform can be viewed at the same level of detail.

40% = Only 40% of the whole waveform is shown on the display. In this setting X DELAY can be used to scroll left and right across the waveform. In this way the rest of the waveform can be viewed at the same level of detail.

20% = Only 20% of the whole waveform is shown on the display. In this setting X DELAY can be used to scroll left and right across the waveform. In this way the rest of the waveform can be viewed at the same level of detail.

X DELAY (WAVEFORM TOOLS)

This feature allows the waveform display to be panned right or left at the chosen level of X ZOOM detail. A low delay value relates to the left hand side of the vision raster and a high delay value relates to the right hand side of the vision raster.

AUDIO VOLUME

Audio embedded into the SDI / HD-SDI signal can be monitored by plugging headphones into the 3.5mm jack socket on the VS-100 front panel. Using the AUDIO VOLUME option, the Menu Dial can be used to increase or reduce the volume at the connected headphones, so it is monitored at a comfortable level.

AUDIO CHANNEL

The first 8 audio channels embedded into an SDI / HD-SDI signal can be monitored by the VS-100. Using the AUDIO CHANNEL option allows selected stereo pairs to be chosen for monitoring with the headset socket. The chosen pair are underlined on the VS-100 output display also.

CONFIGURATION

This option in the VS-100 Main Menu allows set up of Video Thumbnail, SDI loopthrough, Capture setting and confirmation of the VS-100 firmware revision.

VIDEO THUMBNAIL

Allows the option to switch the video thumbnail on the scope display between 4x3 (4:3) or 16x9 (16:9) aspect ratio when working with Standard Definition inputs. A HD input should be viewed in its native 16x9 aspect ratio.

SDI LOOPTHROUGH

Allows the SDI output of the VS-100 to be used as:

ON = A clean video loop through – SD or HD

OFF = A secondary scope output – HD-SDI 1280x720

NOTE: This setting can be over-ridden by the **VIDEO DISPLAY** setting in the VS-100 main menu.

CAPTURE

The VS-100 scope displays can be set to sample **FIELD1**, **FIELD2** or **FRAME** depending on the users requirement. This choice is confirmed in the top right hand corner of the current scope display.

DSC labs camera alignment tools

Camera alignment tools such as DSC labs' *Cam Align Books* and *Chroma Du Monde* can help speed up the camera alignment process by introducing known calibrated constants into the sampled video that should produce a standard VS-100 Waveform, Parade or Vectorscope pattern. The live lighting and camera settings can then be adjusted to produce a VS-100 pattern that matches a calibrated pattern.

For more information on these tools visit <http://www.dsclabs.com/>

VS-100 Quick Start Guide

Black and White Balance Adjustment (VECTORSCOPE)

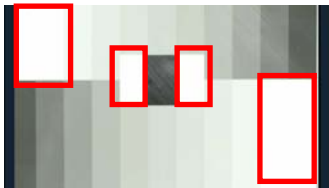
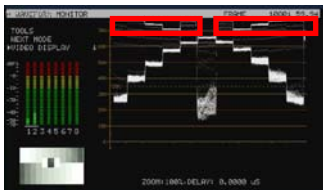
1. Aim the camera at a solid white background or white reference card.
2. Turn on any set lights and ensure any coloured filters are removed. We want an evenly lit white reference card or background with only true white light.
3. Select VECTORSCOPE mode on the VS-100 using the NEXT MODE option.
4. Use the camera's auto white balance feature to white balance against the solid white background or reference white card.
5. If necessary adjust R (Red) or B (Blue) GAIN of the camera to move the shown sample points for white video into the center graticule box of the VS-100 Vectorscope.
6. Once white balancing is complete cap the camera lens to produce black video. The sample points should only appear in the same center graticule box of the VS-100 Vectorscope.
7. If necessary adjust R (Red) or B (Blue) GAIN of the camera to move the shown sample points for black video into the center graticule box of the VS-100 Vectorscope.
8. Remove the lens cap and continue to Luminance Adjustment.

Luminance Adjustment (HISTOGRAM)

1. Under the same on set lighting conditions aim the camera back to the white background or ideally a grayscale reference chart which includes 100% white and absolute black.
2. Select HISTOGRAM mode on the VS-100 using the NEXT MODE option.
3. Adjust the camera's IRIS and Neutral Density Filter to reach the desired maximum white level state. If the camera has a Zebra function you can use this to identify areas of under or over exposure too.
4. If aiming at a precise grayscale chart, the VS-100 histogram output may resemble evenly spaced vertical sample bars in line with the grayscale chart. However, if the pattern is distributed towards the right (100), it can mean the camera is over exposed. If the pattern is distributed towards the left (0), it can mean the camera is under exposed.
5. If there are readings below zero the black levels will be crushed or too black. Use the master pedestal setting on the camera to set the lowest black level at or slightly above 0.
6. Once the first camera is correctly calibrated select **TOOLS>TRACE MEMORY>SAVE TRACE** to save the calibrated matrix levels from the first camera.
7. Now connect VS-100 to the second camera on the set. Adjust the white and black balance on the next camera as described earlier.
8. Now adjust the grayscale reading from second camera output so that it matches the saved output from first camera to align the cameras. The same procedure can be repeated for any remaining cameras.

Luminance Adjustment (WAVEFORM MONITOR)

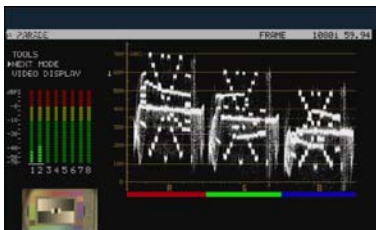
1. Under the same on set lighting conditions aim the camera back to the white background or ideally a grayscale reference chart.
2. Select WAVEFORM mode on the VS-100 using the NEXT MODE option.
3. Adjust the camera's IRIS and matrix to reach the desired maximum white level state. There may be a pre-selected level, such as 600mv as a standard for consistency in brightness.
4. If aiming at a precise grayscale chart, the VS-100 waveform output may resemble an X shaped matrix. The steps in this matrix should be evenly distributed in line with the grayscale chart. However, if the matrix is not evenly distributed, it means that the Gamma is not correctly set, and will lead to further adjustment of the camera.
5. Once the first camera is correctly calibrated select TOOLS> TRACE MEMORY> SAVE TRACE to save the calibrated matrix levels from the first camera.
6. Now connect VS-100 to the second camera on the set. Adjust the white and black balance on the next camera as described earlier.
7. Now adjust the grayscale matrix reading from second camera output so that it matches the saved matrix from first camera to align the cameras. The same procedure can be repeated for any remaining cameras.



The grayscale matrix image above is not evenly stepped and shows there are four over-exposed white areas

Colour /Hue Adjustment (PARADE RGB / YCbCr)

1. Under the same on set lighting conditions aim the camera at a colour reference chart (such as DSC labs' Chroma Du Monde).
2. Adjust the colour level of the camera to give its image the required warmer or colder look according to your preference.
3. Select PARADE mode (RGB or YCbCr) on the VS-100 using the NEXT MODE option.
4. PARADE displays the characteristic colour levels on a scale. If the camera is pointed at the Chroma Du Monde reference chart, the operator can now set the camera to standardised colour levels such as R:650mv G:600mv B:600mv. These adopted set reference points can then ensure image consistency in future production runs and any post production grading.
5. Once the first camera is correctly set for colour select TOOLS> TRACE MEMORY> SAVE TRACE to save the current parade trace from the first camera.
6. Now connect VS-100 to the second camera on the set. Adjust the white, black balance and luminance on the next camera as described earlier.
7. Now adjust the colour on the second camera output so that it matches the saved Parade from the first camera. The same procedure can be repeated for any remaining cameras.



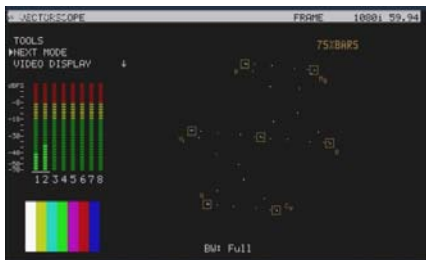
Set your own standard
(The colour of the image above is leaning toward Red)

Camera output after adjustments (VECTORSCOPE)

1. Under the same on set lighting conditions aim the camera at a colour reference chart (such as DSC labs' Chroma Du Monde).
2. Select VECTORSCOPE mode on the VS-100 using the NEXT MODE option.
3. Now, the VECTORSCOPE displays the analyzed colour components. If the white balance of one camera had been altered, the VECTORSCOPE matrix can be used as a check point to ensure all cameras have been correctly aligned.



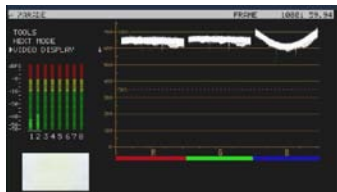
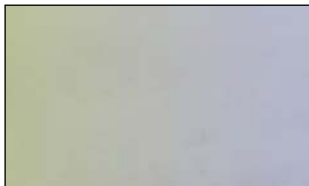
4. Feeding camera output of 75% colour bars into a Video Switcher confirms if the colour image is correct after the switcher too.



VS-100 Advanced Application

RGB PARADE and White Balance Adjustment

- i. Select PARADE mode on the VS-100 using the NEXT MODE option. Then point the camera at the white background or white reference card.
- ii. When the white balance is correctly adjusted, The RGB traces should be flat, balanced, and parallel to one another in a straight line.
- iii. When White balance is not correctly adjusted, the PARADE will show unbalanced trace.
- iv. When the lighting is not evenly spread-out, the PARADE will show traces which deviate from the straight line.
- v. If one of the RGB trace has one end higher than another, it means that the colour has lost its fidelity.



This undesired situation will occur if the camera is not adjusted correctly or you have an uneven colour temperature/ lighting on the background during white balancing.

Camera Noise

- i. Adjust the IRIS of the camera to minimum or cap the lens.
- ii. Select PARADE mode on the VS-100 using the NEXT MODE option.
- iii. The noise value will be displayed on the chart. The thicker the value on the line chart, the greater the noise level. The thinner the trace on the chart, the less the noisy it is



Comparing color saturation among cameras

- i. Aiming the camera at Chroma Du Monde (Set camera to AUTO).
- ii. Select VECTORSCOPE mode on the VS-100 using the NEXT MODE option.
- iii. The VECTORSCOPE matrix displaying on VS-100 represents the colour components from the camera.
- iv. Use the SAVE TRACE feature under TOOLS to compare the colour components between cameras.
- v. When two cameras have aligned luminance, the larger the VECTOR matrix, the better color saturation it represents. The matrix indicates the current color components of the camera by showing the positioning of the dots.



Specifications

Interface	1x SDI/HD-SDI input (SMPTE 272M-C 1.5Gbps, 270Mbps with Embedded Audio) 1x SDI/HD-SDI Loop through output 1x HDMI Output
HD/SD-SDI Spec	SMPTE 259M-C (270Mbps - 525/625 Component Video) and SMPTE 292M (1.485/1.001 Gbps) Connector BNC (IEC 169-8) Impedance 75 Ω Return Loss HD > 15 dB (5 MHz to 750 MHz) > 10 dB (750 MHz to 1.5 GHz) SD > 15 dB (5 MHz to 270 MHz) Equalization 200 m Belden 8281 cable at 270 Mbps; 100 m (typical) of Belden 1694A at 1.485 Gbps
HDMI	Supports HDMI v1.1
Operating Temperature	0°C to 40°C (32°F to 102°F)
Humidity	10% to 90% (non condensing)
Firmware	Version D0105060801
Dimensions	79mm (W) x 28mm (H) x 113.5mm (D)
Weight	Gross, packed = 0.52 Kg (1.15 lbs) Nett, unit only = 0.26 Kg (0.57 lbs)
Power	DC 12V / 0.2A (4W)

Service & Support

It is our goal to make your products ownership a satisfying experience. Our support staff are available to assist you in setting up and operating your product. Please refer to our web site www.datavideo-tek.com for answers to common questions, support requests or contact your local office below.

Datavideo Global Website: www.datavideo-tek.com

Datavideo Corporation

Tel: +1 562 696 2324	Fax: +1 562-698-6930	E-Mail: contactus@datavideo.us
----------------------	----------------------	--

Datavideo Technologies Europe BV

Tel: +31-30-261-96-56	Fax: +31-30 261-96-57	E-Mail: service@datavideo.nl
-----------------------	-----------------------	--

Datavideo UK Limited

Tel: +44 1457 851 000	Fax: +44 1457 850 964	E-Mail: sales@datavideo.co.uk
-----------------------	-----------------------	--

Datavideo Technologies Co., Ltd

Tel: +886 2 8227 2888	Fax: +886-2-8227-2777	E-mail: service@datavideo.com.tw
-----------------------	-----------------------	--

Datavideo Technologies China Co., Ltd

Tel: +86 21-5603 6599	Fax: +86 21-5603 6770	E-mail: service@datavideo.cn
-----------------------	-----------------------	--

Datavideo Technologies (S) PTE LTD

Tel: +65-6749 6866	Fax: +65-6749 3266	E-mail: service@datavideo.sg
--------------------	--------------------	--

Datavideo HK Ltd

Tel: +852 2833 1981	Fax: +852-2833-9916	E-mail: info@datavideo.com.hk
---------------------	---------------------	--

Datavideo France

Tel: +33 1 60 37 02 46	Fax: +33 1 60 37 67 32	E-Mail: info@datavideo.fr
------------------------	------------------------	--

Datavideo India

Tel: +91 120 4309120	Fax: +91 120 4309121	E-Mail: sales@datavideo.in
----------------------	----------------------	--

All the trademarks are the properties of their respective owners.
Datavideo Technologies Co., Ltd. All rights reserved 2012

Rev Date: 15/08/2012

P/N: G082060542E1