

The elvid logo consists of the word "elvid" in a lowercase, sans-serif font, with a small registered trademark symbol (®) to its upper right. The text is white and is contained within a yellow rectangular box with rounded corners.

elvid®

FIELDVISION  
**OCM-10-PSM**  
10.1" PRO LCD MONITOR

---

**USER  
MANUAL**



## INTRODUCTION

Thank you for choosing Elvid.

The Elvid OCM-10-PSM FieldVision 10.1" Pro LCD Monitor with Scopes is perfect as a director's monitor. Its signature all-scopes setting displays a histogram, audio column, vector, RGB histogram, and YUV waveform on the sides with an uninterrupted view of your incoming video frame, enabling instant and constant feedback without disrupting your view of the image. Anamorphic mode can be set to 1.3× or 2.0× to offer an accurate view of your picture's aspect ratio when shooting with an anamorphic lens.

The unique nine-grid mode divides the frame into a 3 × 3 grid as a composition aid and allows you to magnify a specific area without adjusting your frame. A zebra exposure indicator and false color mode with onscreen key display provide visual guides so you can achieve precise exposure levels. A focus assist tool with two sensitivity levels helps fine-tune your focus. There are also broadcast-specific features like overscan, safety frame markers, and a tally light.

The FieldVision is equipped with Video, YPbPr, HDMI, and two SDI inputs—all with loop-through—making this monitor compatible with most pro-video connections. Native resolution is 1280 × 800, and you can easily change the native 16:10 aspect ratio to fit your needs.

Onboard controls include five function buttons that can be programmed from a palette of 22 functions and saved in three independent groups. Four knobs facilitate menu navigation, access focus and Camera (DSLR) modes, and adjust monitor settings. There's also an integrated mono speaker and a 3.5 mm stereo headphone output for live audio monitoring.

## PRECAUTIONS

- Please read and follow these instructions and keep this manual in a safe place.
- Exposure to high sound levels can cause permanent hearing loss. Avoid listening at high volumes for extended periods of time.
- Keep this product away from water and any flammable gases or liquids.
- Make sure this product is powered off when plugging it into a power source.
- Use only the correct, recommended voltage.
- Do not attempt to disassemble or repair this product.
- Do not place or store the FieldVision facedown, since this can damage the screen.
- Handle this product with care. Avoid any unnecessary impacts to this product.
- Do not block the vents in this product.
- Disconnect this product from its power source before storage and during electrical storms.
- Do not use chemical solutions to clean this product. Clean this product with only a soft, dry cloth.
- Keep this product away from children.
- Make sure that this product is intact and that there are no missing parts.
- To avoid damage to this product, be careful not to overtighten or improperly thread any of the threaded fittings.
- All photos are for illustrative purposes only.

## TABLE OF CONTENTS

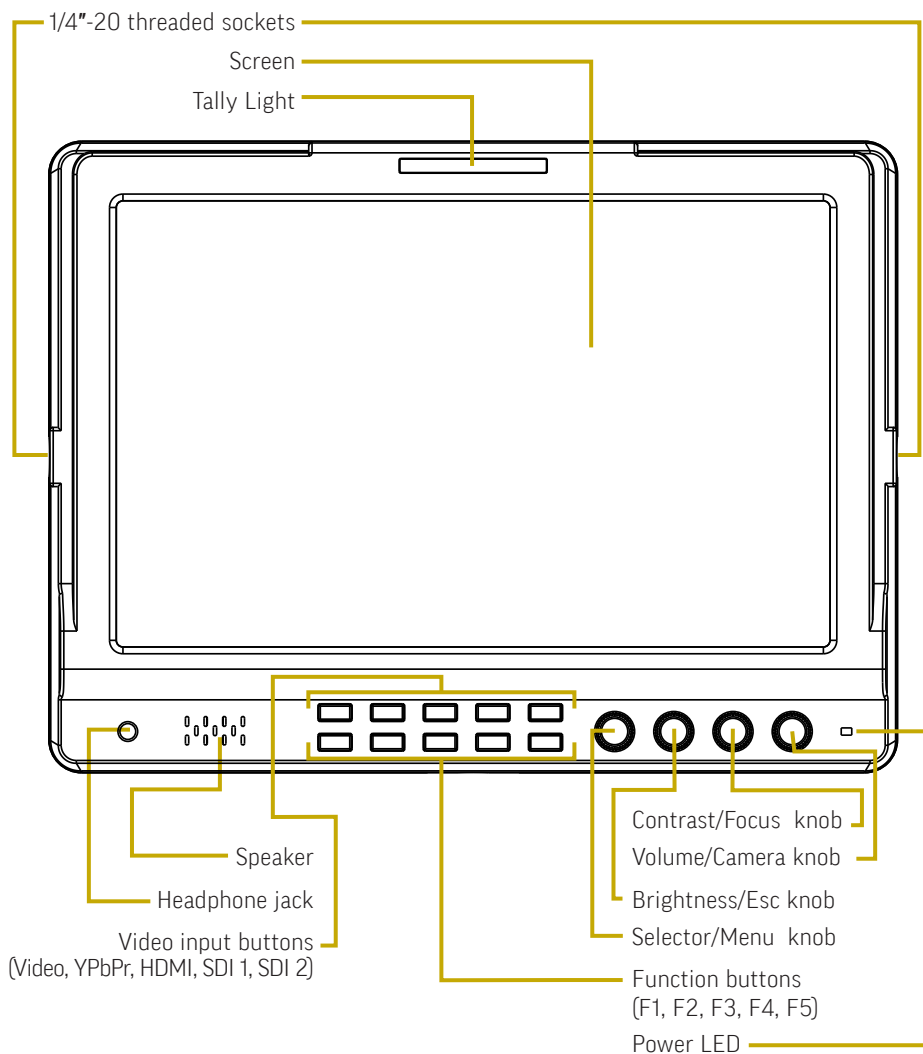
Precautions.....	3	RGB Histogram .....	13
Product Contents .....	5	Waveform.....	13
Overview .....	6	All Scopes.....	13
Powering the FieldVision .....	8	Picture Setting Menu .....	14
Monitoring Sound.....	9	Scan Mode .....	14
Mounting the FieldVision.....	9	Camera Mode .....	14
Connecting to Your Camera .....	9	Flip.....	14
Loop Through.....	9	Freeze.....	14
Tally Connection .....	9	Pixel to Pixel .....	14
The Sunshade.....	10	Zoom .....	14
The Menu .....	11	Anamorphic .....	14
Navigating the Menu .....	11	Color Setting Menu.....	15
Assistant Functions Menu .....	11	Color Temp.....	15
Check Field .....	11	Red, Green, and Blue.....	15
Pseudo Color .....	11	Shortcuts Menu .....	15
Zebra Crossing.....	11	Shortcut Group .....	15
Focus Assist .....	11	OSD Setting Menu.....	16
Focus Color .....	11	Language.....	16
Pattern Gen .....	11	OSD Time.....	16
Marker Display Menu.....	11	OSD Trans .....	16
Center Marker .....	11	Volume.....	16
Marker Type.....	12	Mute .....	16
Safety Area.....	12	Reset .....	16
Marker Color.....	12	SW Version .....	16
Nine Grid .....	12	Specifications .....	17
Scopes Menu .....	13	Supported Resolutions and Frame Rates	18
Y Histogram.....	13	Troubleshooting.....	19
Audio Column.....	13	One-Year Limited Warranty.....	20
Vector.....	13		

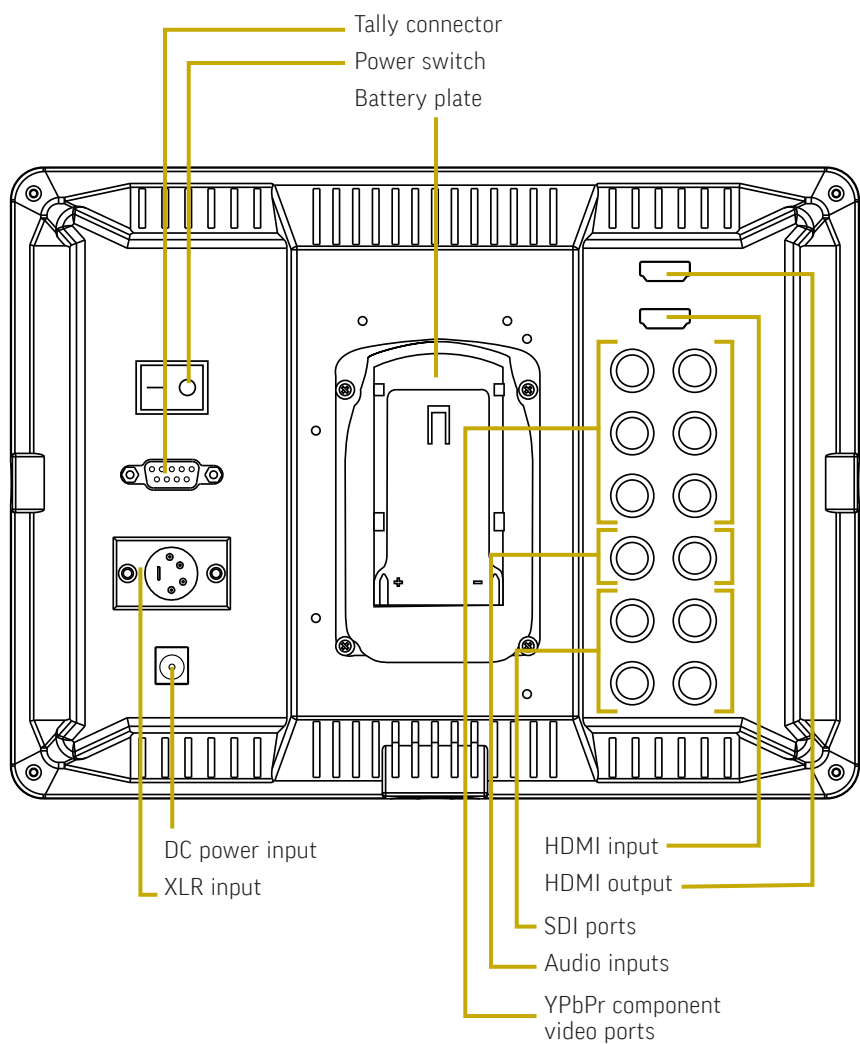
## PRODUCT CONTENTS

- 10.1" Field Monitor
- Sunshade
- Sunshade thumbscrews (×2)
- Tabletop bracket
- Tabletop bracket thumbscrews (×2)
- Adhesive touch strip
- Tally kit
- 4-pin XLR power supply
- AC power cable
- User manual



## OVERVIEW





## POWERING THE FIELDVISION

There are three ways to power the FieldVision: 4-pin XLR input, 12 V DC input, and a Sony L-Series camera battery.

### 4-PIN XLR

To power the FieldVision via the 4-pin XLR input, use a 4-pin XLR power supply and AC power cable to connect the FieldVision's 4-pin XLR DC power input to your power source.

To power the FieldVision via the 4-pin XLR input, follow these steps:

1. Fully insert a 4-pin XLR power supply into the 4-pin XLR DC power input on the back of the monitor. The connector should click into place when fully inserted.

2. Use an AC power cable to connect the XLR power supply to your AC power source.

To turn on the FieldVision, press the power switch to the On position. The power indicator LED will glow green.

### 12 V DC INPUT

To power the FieldVision via the 12 V DC input, use a 12 V DC adapter with the included 2.1 mm DC barrel to connect the FieldVision's DC power input to your AC power source.

To turn on the FieldVision, press the power switch to the On position. The power indicator LED will glow green.

### CAMERA BATTERY

The FieldVision has a built-in battery plate that accepts all Sony L-Series batteries. This allows you to power the FieldVision with readily-available battery packs that you may already own.

To power the FieldVision with a Sony L-Series battery (not included), follow these steps:

1. Place a compatible battery in the battery plate. Make sure the battery's bottom contacts are aligned with the contacts in the battery plate.

2. Slide the battery forward until it locks into place.

To turn on the FieldVision, press the power switch to the On position. The power indicator LED will glow green.



## GETTING STARTED

### MONITORING SOUND

You can monitor sound via the integrated speaker or the 3.5 mm stereo headphone jack. To monitor via the headphone jack, plug in a pair of compatible headphones.

### MOUNTING THE FIELDVISION

Use one of the 1/4"-20 threaded sockets in the FieldVision to attach the monitor to your mounting system. Make sure your bracket can support the monitor.

Alternatively, you can mount the included tabletop bracket by attaching it with the included bracket thumbscrews.

### CONNECTING TO YOUR CAMERA

To connect the FieldVision to your camera, follow these steps:

1. Choose the desired video signal, and use the appropriate cable to connect your camera to the corresponding input connections on the back of the monitor.
2. Press the video input button (composite video, YPbPr, HDMI, SDI1, or SDI2) that corresponds to your video input signal.

### LOOP THROUGH

The FieldVision is equipped with loop-through, also known as pass-through, for all of its video inputs. To loop the video signal through the monitor, connect your camera to the desired video input, and then connect the appropriate cable to the corresponding output on the back of the monitor.

### TALLY CONNECTION

If desired, you can connect your tally cable to the FieldVision's RS232 D-sub 9-pin tally connector or the included bare-end adapter. Refer to the included insert for the specific tally pin connections.

## THE SUNSHADE

### THE SUNSHADE

The sunshade prevents glare on the monitor's screen by blocking out stray light and is useful when shooting outdoors. To attach the included sunshade, follow these steps:

1. Unfold the sunshade and place it along the top and sides of the monitor.

Tip: For a more secure fit, attach the included adhesive touch strip along the top edge of the monitor. This will help hold the sunshade in position.

2. Align the sunshade's screw holes with the 1/4"-20 threaded sockets in the sides of the monitor.

3. Use the included thumbscrews to fasten the sunshade in place.



## THE MENU

Before using the FieldVision, you will need to make sure the monitor's settings are properly configured. All of the setting configurations are located in the main menu, which has seven submenus: Assistant Functions, Marker Display, Scopes, Picture Setting, Color Setting, Shortcuts, and OSD Setting.

### NAVIGATING THE MENU

To access the menu, press the Menu knob. The submenus are located in the left column of the main menu window. Turn the Menu knob to navigate the menu. To make a selection, press the Menu knob. Press the Esc knob at any point to return to the previous menu or screen without making a selection.

### ASSISTANT FUNCTIONS MENU

**Check Field:** In Check Field mode, only the selected color will appear onscreen. You can select gray, red, green, or blue. Check Field mode is useful for calibrating the monitor.

**Pseudo Color:** Replaces the true colors of the image with a standard set of colors, displayed in an onscreen chart, that represent exposure levels. The higher—or hotter—the exposure, the higher the color will be in the chart. As exposure decreases, the color will descend

through the chart. This mode is useful for quickly and accurately determining your shot exposure.

**Zebra Crossing:** Displays animated black and white stripes through areas of the image that are overexposed. You can set this mode to high (70%) or low (100%) sensitivity.

**Focus Assist:** Also known as peaking, this focus-assist tool displays an outline around in-focus areas of the image. You can set this tool for high or low sensitivity to edge detection. You can also access this mode while on the main screen by pressing the Focus knob.

**Focus Color:** Sets the color of the outline for Focus Assist mode. You can choose red (default), green, blue, or white.

**Pattern Gen:** Displays color bars on the screen.

### Marker Display Menu

**Center Marker:** Displays a marker in the center of the screen.

## THE MENU

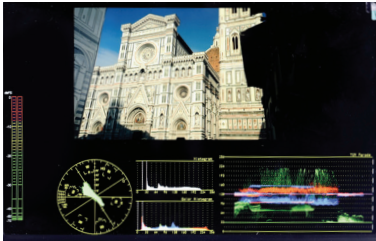
**Marker Type:** Displays an onscreen box as a safety frame marker at a specific aspect ratio. You can set this to 16:9, 4:3, 2.35:1, or 1.85:1.

**Safety Area:** Displays an onscreen box as a safety frame marker at a percentage of the screen size. You can set this to 80%, 85%, 90%, 93%, or 96%. Note that this percentage corresponds to the screen size and not the aspect ratio.

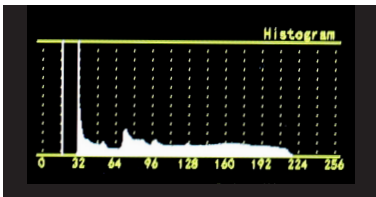
**Marker Color:** Changes the color of the onscreen markers. You can choose white (default), gray, black, red, green, or blue.

**Nine Grid:** Divides the screen into a  $3 \times 3$  grid of nine panels, any of which you can select to display at full screen. This is useful for zooming in on a specific part of the image to check or fine-tune the focus without adjusting or changing the frame. Use the Menu knob to navigate the grid and select a panel. When the selected panel is at full screen, press either the Menu or Esc knobs to return to the grid. Press the Focus or Camera knobs to maintain this panel as your current display. To return to the grid, enable Nine Grid mode via the Marker Display menu.

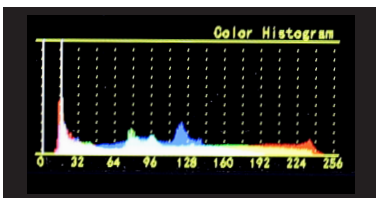
## SCOPES MENU



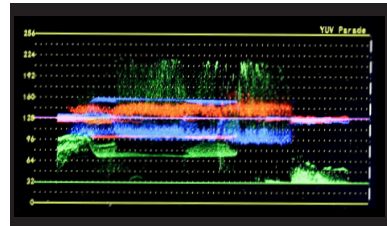
**All Scopes:** Display all the scopes in the Scopes menu (Histogram, Audio Column, Vector, RGB Histogram, and YUV Waveform) on the sides of the frame with an uninterrupted view of your incoming video image. The default setting is Off. You can also add the scopes individually to display them over your image.



**Y Histogram:** Indicates the overall level of exposure from light to dark and shows the percentage of the image at a particular exposure level.



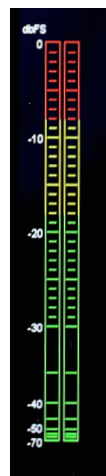
**RGB Histogram:** Displays the overall exposure level (Y Histogram) as well as red, green, and blue levels on a single scope.



**Vector:** Displays a vectorscope, which is an overall color saturation meter for all colors in the image.



**Waveform:** Displays a waveform of the image's exposure level in RGB parade, YUV, or Y.



**Audio Column:** Displays the audio level meter onscreen.

## PICTURE SETTING MENU

**Scan Mode:** Adjusts the aspect ratio for the FieldVision's screen. You can choose Auto (default), Over Scan, or Full Screen. Auto displays the image at the video signal's native aspect ratio so you can see the entire video image (e.g., if the signal's native aspect ratio is 4:3, it will display at 4:3). Over Scan displays only the broadcast-safe image. Full Screen changes the image's aspect ratio to 16:10, regardless of the video signal's native aspect ratio.

**Camera Mode:** Camera mode scales the image to fill the screen and adjusts the monitor resolution so the video isn't interrupted. This is useful when shooting on a DSLR. You can also access this mode while on the main screen by pressing the Camera knob.

**Flip:** Flips the display horizontally, vertically, or both.

**Freeze:** Freezes the current onscreen image.

**Pixel to Pixel:** Turns off scaling and displays the incoming video signal in its native resolution and aspect ratio with 1:1 pixel mapping. If the picture is larger than the monitor's 1280 × 800 resolution, the center of the image will appear onscreen.

**Zoom:** Magnifies the center of the onscreen image. You can choose ×4, ×9, and ×16.

**Anamorphic:** Set this to match the size of your anamorphic lens. You can choose 1.3×, 2.0×, and 2.0× mag. The 2.0× mag setting magnifies the center of the image to fill the screen. It's useful to check the focus when the scaled image appears too small onscreen.

Note: Anamorphic mode will not work in All Scopes mode.

## COLOR SETTING MENU

In the Color Setting menu, you can adjust Brightness, Contrast, Hue, Chroma, and Sharpness from 0 to 100.

You can also adjust brightness, contrast, and volume without opening the menu. While on the main screen, rotate the Esc knob for brightness, the Focus knob for contrast, and the Camera knob for volume.

**Color Temp:** You can select from the presets 9300, 6500 (default), 5600, and 3200 K. You can also configure your own custom setting by turning the knob to User. Customizing the color temperature is recommended only for advanced users.

**Red, Green, and Blue:** When using one of the preset color temperatures, these levels are displayed onscreen in the submenu but cannot be accessed. These are accessible only when setting the custom color temperature via the Color Temp submenu.

## SHORTCUTS MENU

To save time when using the FieldVision, you can assign unique settings to the five function buttons to suit your specific needs.

The options for customizing the function buttons are Pseudo Color, Y Histogram, Audio Column, Vector, RGB Histogram, Waveform, Check Field, Zebra Crossing, Focus Assist, Focus Color, Scan Mode, Zoom, Flip, Freeze, DSLR Camera, Marker Color, Marker Type, Safety Area, Center Marker, Nine Grid, Mute, and Pattern Gen.

**Shortcut Group:** You can create three independent groups of shortcut button assignments labeled 0, 1, and 2.

## OSD SETTING MENU

**Language:** You can set the onscreen language to English or Chinese.

**Osd Time:** Determines the number of seconds the menu remains onscreen. You can choose 5, 10, 15, 20, 25, or 30 seconds (default).

**Osd Trans:** Makes the menu translucent. The default setting is Off (opaque).

**Volume:** Adjusts the monitoring volume from 0 to 100. You can also adjust this by rotating the Volume/Camera knob.

**Mute:** Mutes the monitoring volume of the FieldVision.

**Reset:** Restores the FieldVision to the factory default settings. This will erase all current settings and replace them with the default settings.

**SW Version:** Displays the current software version of the FieldVision.



## SPECIFICATIONS

- Panel size: 10.1" IPS panel
- Backlight: LED
- Native resolution: 1280 × 800
- Aspect ratio: 16:10
- Brightness: 650 cd/m<sup>2</sup>
- Contrast ratio: 800:1
- Response time: 25 ms
- Viewing angle: 178°, 89°/89° (U/D)
- Inputs: 3G-SDI (×2), HDMI, component, composite, analog audio
- Outputs: 3G-SDI (×2), HDMI, component, composite, headphone (3.5 mm stereo)
- Input voltage: 7–24 V DC (via 4-pin XLR or 2.1 mm DC barrel)
- Current: 1500 mA
- Power consumption: ≤16 W
- Available battery plates
  - o FBP-F970 (included): Sony L-series batteries
  - o FBP-LPE6: Canon LP-E6 batteries
  - o FBP-PD28: Panasonic D28 batteries
- Working temperature: 14°F–122°F (-10°–50°C)
- Storage temperature: -4°F–140°F (-20°–60°C)
- Mount size: 1/4"-20 (×3)
- Dimensions (W × H × D): 10.2" × 7.6" × 2.3" (25.9 × 19.3 × 5.8 cm)
- Weight: 1.8 lb. (816.5 g)

SUPPORTED RESOLUTIONS AND FRAME RATES

SIGNAL	RESOLUTION	SUPPORT
HDMI	1080i	60, 50
	1080p	60, 50, 30, 25, 24
	720p	60, 50
	576p	
	576i	
	480p	
	480i	
SDI	1080PsF	25, 24
	1080p	60, 50
	1080i	60, 50
	720p	60, 50
	576i	
	480i	
	480p	

## TROUBLESHOOTING

PROBLEM	SOLUTION
The FieldVision will not turn on.	<ul style="list-style-type: none"> <li>• If you are powering the FieldVision with a camera battery, make sure that the battery is fully charged.</li> <li>• If you are powering the FieldVision via AC power, check your power connection to make sure it's reliable and properly connected. Try switching AC power sources.</li> </ul>
The screen is flickering or blinking.	<ul style="list-style-type: none"> <li>• Check your video cables to make sure they are reliable and properly connected.</li> <li>• If you are powering the FieldVision with a camera battery, change your battery.</li> <li>• If you are powering the FieldVision via AC power, check your power connection to make sure it's reliable and properly connected.</li> </ul>
The screen displays only a black and white image.	<ul style="list-style-type: none"> <li>• Check whether the color saturation is properly configured.</li> <li>• Make sure Check Field mode is disabled.</li> <li>• If you are using component video, make sure that all the cables are attached correctly and fully plugged in.</li> </ul>
The FieldVision is turned on but there is no onscreen image.	<ul style="list-style-type: none"> <li>• Check your cables to make sure they are reliable and properly connected.</li> <li>• If you are powering the FieldVision via AC power, use only the recommended power adapters.</li> <li>• Make sure the video resolution and frame rate are supported by the monitor. See the Supported Resolutions and Frame Rates chart on page 18.</li> <li>• Make sure the monitor is set to the proper video input.</li> </ul>
The FieldVision is not receiving a video signal.	<ul style="list-style-type: none"> <li>• Check your cables to make sure they are reliable and properly connected. Try using a new cable.</li> <li>• Check your video source output to make sure it's listed in the Supported Resolutions and Frame Rates chart on page 18.</li> </ul>
"No signal" is displayed onscreen.	<ul style="list-style-type: none"> <li>• Make sure the video resolution and frame rate are supported by the monitor. See the Supported Resolutions and Frame Rates chart on page 18.</li> </ul>
The colors are inaccurate.	<ul style="list-style-type: none"> <li>• Check your cables to make sure they are reliable and properly connected.</li> <li>• Make sure Pseudo Color mode is disabled.</li> <li>• Make sure your monitor is properly calibrated.</li> </ul>
The onscreen image size is incorrect.	<ul style="list-style-type: none"> <li>• Make sure scan and zoom modes are disabled.</li> <li>• Check whether the aspect ratio is set correctly.</li> </ul>
The FieldVision is emitting a high-pitched whine (feedback).	Turn the monitor's volume all the way down, mute the volume via the OSD Setting menu, or plug headphones into the headphone jack.

# ONE-YEAR LIMITED WARRANTY

---

This Elvid product is warranted to the original purchaser to be free from defects in materials and workmanship under normal consumer use for a period of one (1) year from the original purchase date or thirty (30) days after replacement, whichever occurs later. The warranty provider's responsibility with respect to this limited warranty shall be limited solely to repair or replacement, at the provider's discretion, of any product that fails during normal use of this product in its intended manner and in its intended environment. Inoperability of the product or part(s) shall be determined by the warranty provider. If the product has been discontinued, the warranty provider reserves the right to replace it with a model of equivalent quality and function.

This warranty does not cover damage or defect caused by misuse, neglect, accident, alteration, abuse, improper installation or maintenance. EXCEPT AS PROVIDED HEREIN, THE WARRANTY PROVIDER MAKES NEITHER ANY EXPRESS WARRANTIES NOR ANY IMPLIED WARRANTIES, INCLUDING BUT NOT LIMITED TO ANY IMPLIED WARRANTY OF MERCHANTABILITY OR FITNESS FOR A PARTICULAR PURPOSE. This warranty provides you with specific legal rights, and you may also have additional rights that vary from state to state.

To obtain warranty coverage, contact the Elvid Customer Service Department to obtain a return merchandise authorization ("RMA") number, and return the defective product to Elvid along with the RMA number and proof of purchase. Shipment of the defective product is at the purchaser's own risk and expense.

For more information or to arrange service, visit [www.elvidcinema.com](http://www.elvidcinema.com) or call Customer Service at 212-594-2353.

Product warranty is provided by the Gradus Group. [www.gradusgroup.com](http://www.gradusgroup.com)

Elvid is a registered trademark of the Gradus Group.

© 2015 Gradus Group LLC. All Rights Reserved.

[www.elvidcinema.com](http://www.elvidcinema.com)



GG1