



Read Me Before Usage!

Manual of 1303

Table of Contents

Chapter 1 Content Description	—1
Section 1 On-Lap Monitor and Accessories	—1
Section 2 Notices of On-Lap Monitor	—3
Section 3 Safety Precautions	—4
Section 4 Safety Instructions	—4
Section 5 Product Maintenance	—4
Section 6 LCD Pixel Statement	—5
Section 7 Disposal of Electronic Equipment	—5
Chapter 2 Installation Instructions	—5
Section 1 Protective Cover and VESA 100 Kit Assembly	—5
Section 2 Connect the Video Cable and USB Touch and Power Cable	—7
Chapter 3 Power On and Off the On-Lap Monitor	—8
Section 1 Power On and Off the On-Lap Monitor	—8
Section 2 Monitor Display Setting	—8
Section 3 Windows 7/8.1 Touchscreen Setting	—9
Section 4 Windows 8.1 Touch Gesture Description	—10
Chapter 4 Hot Keys, LED lights and OSD Instructions	—11
Section 1 Hot Keys & LED lights Description	—11
Section 2 OSD Description	—11
Section 3 Low Power Protection Warning	—14
Chapter 5 Specification	—14
Section 1 Plug and Play	—14
Section 2 Pin Assignment and Standard Default Modes	—14
Section 3 Specification	—16
Section 4 Troubleshooting	—17

Chapter 1 Content Description

Section 1 On-Lap Monitor and Accessories

1. Parts Description

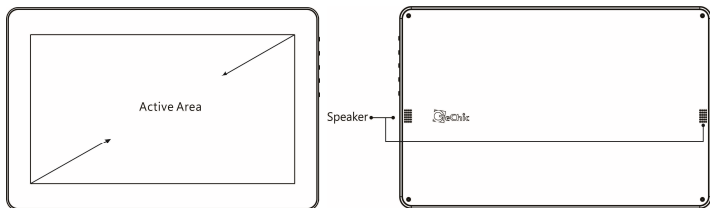


Fig.: On-Lap 1303 Front & Back

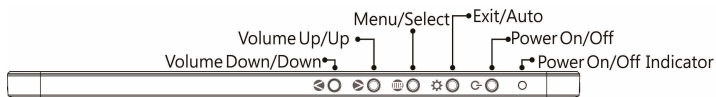


Fig.: 1303 buttons and LED light Description

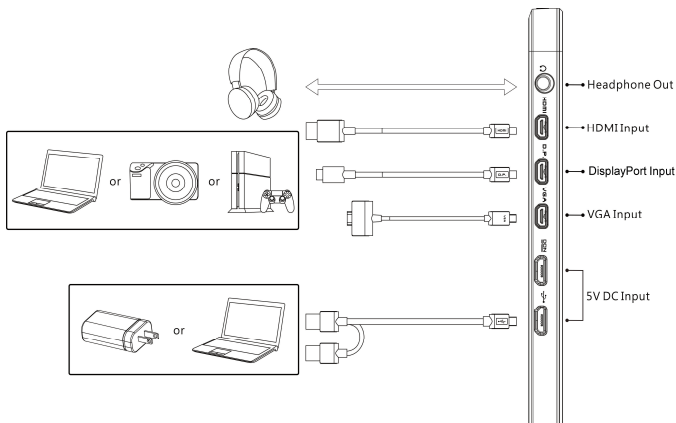


Fig.: On-Lap 1303H & 1303A Input & Output ports

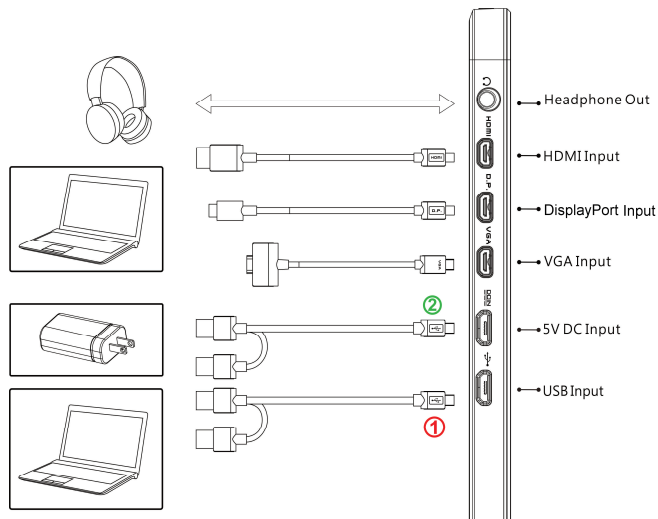


Fig.: On-Lap 1303I Input & Output ports

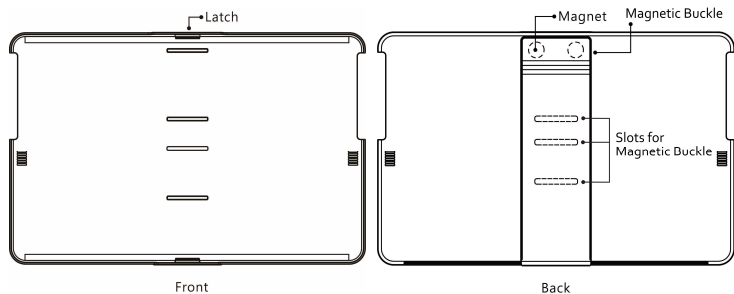


Fig.: Parts Description of Protective Cover

2. Package & Accessories

Accessories	1303H	1303I	1303A
Micro USB to USB Touch Power Cable	Yes(1 pcs)	Yes(2 pcs)	Yes(1 pcs)
Micro HDMI Video Cable*1	Yes	Yes	Yes
mini-DisplayPort Video Cable*1	No (Optional)	No (Optional)	No (Optional)
VGA Video Cable*1	No (Optional)	No (Optional)	No (Optional)
Charger(5V,Max.2A) x1	Yes	Yes	No (Optional)
Cover Stand x1	Yes	Yes	Yes
Manual x1	Yes	Yes	Yes
1303 VESA100 Kit	No (Optional)	No (Optional)	No (Optional)
Stand 4	No (Optional)	No (Optional)	No (Optional)

Section 2 Notice of On-Lap Monitor

- Before plugging USB or Video cables, do make sure the aspect of plug is correct. Insert an upside-down plug may cause port damage. While removing the plug, do remove it out horizontally. Do not shuck the port or plug vigorously. Any damage caused by wrong plug inserting is not included in warranty coverage.**
- Please do not use sharp objects to touch the screen. Gently use the finger to touch or swipe on the screen.
- Please do not place touch monitor near light bulb, electrical wire or other items that generate electromagnetic field, which will result in abnormality to touch function.**
- Please do not press the arm or other item to the screen or apply heavy pressure onto the screen.
- Please keep fingers clean and dry when performing touch. If the finger has water drops it may result in the touch screen unable to determine touch location. Use finger to touch the screen, do not use fingertip to perform touch.
- Touch signal needs to communicate through USB cable to Windows 8 or Windows 7 installed computer.** Need to first make sure the Micro USB to USB Touch Power Cable is inserted into the correct port in order to have touch function capability.
- Unstable power input will interfere with touch signal, resulting in inaccurate or failed touch function. It is suggested to use the USB port on lap-top or manufacturer' s 5V 2A Charger.

- 4
8. Disconnect power source before cleaning. Please use soft cloth to clean touch screen monitor. When difficult to clean, wet the cloth then perform cleaning again. Please do not use chlorine, alcohol, ammonia, detergent or other corroding solvents. These solvents may cause damage to the touch screen monitor or leave unremovable residue.
 9. Avoid LCD monitor become exposed to direct sunlight for a long period of time, which may result in damage. When monitor displays different images, image brightness may become slightly uneven. Showing the same image for a prolonged period of time may result in poor liquid crystal response time, causing image persistence to occur.
 10. Monitor may be broken when heavy pressure or sharp object is applied to it. Please properly cover the monitor and make sure the monitor glass will not be pressed if need to carry it outdoors. Placing touch screen monitor inside carrying bag may result in monitor glass damaged by pressing, dropping or colliding with laptop and other items. Place the monitor in protective cover, and carefully make sure the screen glass will not be pressed or touched.

Section 3 Safety Precautions

1. The Product may be severely damaged from overturning or falling. Please do not place on a shaky or unstable table, cupboard or trolley. Do not use the On-Lap Monitor on a moving vehicle.
2. Do not place the items on a vibrating surface, vibration may cause damage to the internal components.
3. The product is not waterproof. Do not use the Product at or near a place with water.
4. Do not insert any object into the Product's slots or gaps.
5. Loudness warning! Avoid volume levels that may be harmful to your hearing. Please check the volume setting before you use the Audio Jack.

Section 4 Safety Instructions

Please read this Manual carefully and observe the operation instructions and precautionary notes. Do retain this document for future reference.

Section 5 Product Maintenance

Do not attempt to repair the Product yourself. Should any of the following conditions occur, please contact our maintenance personnel for service:

- 1) Unable to operate the Product after following the instructions in the Manual.
- 2) The Product falls and the outer casing is damaged.
- 3) Power cable or video cables is damaged.
- 4) Liquid infiltrated into the Product.

Any normal wear and misuse, including but not limited to product failure due to normal usage, is not covered under warranty. Accident, damage, software or hardware changes, force majeure, or become in contact with liquid that result in product malfunction is not covered under warranty.

Section 6 LCD Pixel Statement

The On-Lap Monitor uses a high quality LCD panel. Nevertheless, there might be instances where defective pixels may occur; however, this will not affect the normal functioning of the Product.



Section 7 Disposal of Electronic Equipment

The electronic equipment and batteries should not be disposed of with household waste but should be left at an appropriate collection point for recycling.



Chapter 2 Installation Instructions

Section 1 Cover Stand and VESA 100 Kit Assembly

1 Install Cover Stand

1-1 Take Monitor out: Push the latch of Cover Stand out by right hand and then push the monitor out by left hand. When putting the monitor back to the Cover Stand, first put the bottom of Monitor in and then push the top part of monitor into the cover.

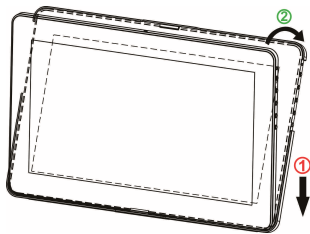
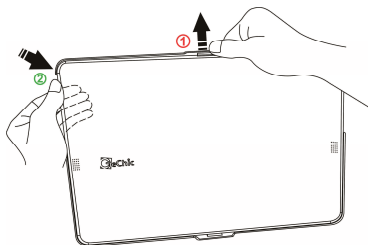


Fig : Take Monitor out from Cover Stand

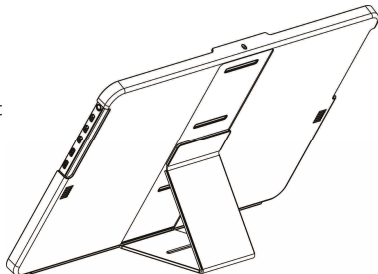
Fig : Put Monitor in Cover Stand

Caution: In order to avoid dropping or breaking the monitor, please keep the back of monitor outward the cover Stand when not in usage.

6

1-2 Take the magnetic buckle off first. There are 4 slots for the magnetic buckle on the back of Cover Stand. Put Magnetic Buckle in one of the slots and the Cover Stand is set.

Fig : Put Magnetic Buckle in slot to set the Cover Stand



2 VESA 100 Kit Installation (Optional)

First Screw the VESA100 Kit in VESA100 arm or camera cradle head/ tripod.

Place the Monitor into VESA 100 Kit, as shown in Fig, and secure the Monitor by screws in.

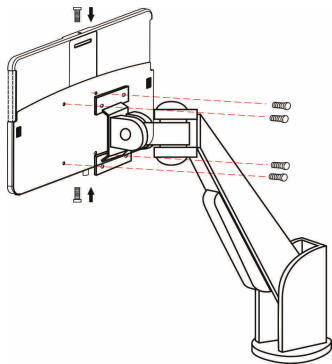


Fig : Screw the VESA100 kit in VESA arm. Put the Monitor in and secure it by screws.

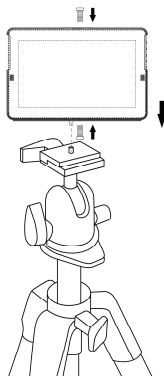


Fig : Screw the VESA100 kit in camera cradle head. Put the Monitor in and secure it by screws.

3 Install Stand 4 (optional)

Step 1 Assemble Stand 4

Select the desired angle placement to assemble Stand 4. During assembly, check if X plate is properly inserted onto slot.

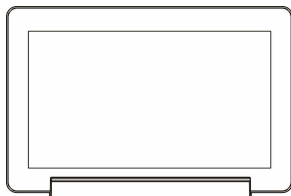


Fig : Install Stand 4

Step 2 Place On-Lap monitor onto Stand 4.

Stand 4 is positioned at the bottom center of monitor.

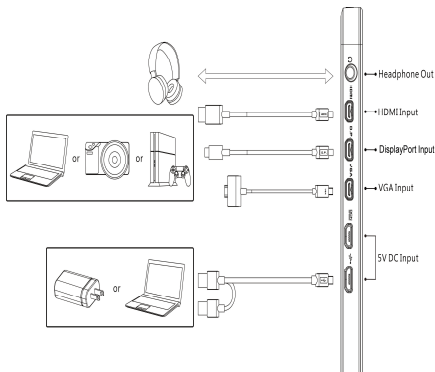
Fig : Place 1303 in Stand 4



Section 2 Connect the Video Cable and USB Touch Power Cable

1. Connection method for On-Lap 1303H & 1303A

Connect USB Power cable first and then connect Video cable. USB power Cable can be connected to USB port of laptop or 5V 2A USB charger. Voice is transmitted by micro-HDMI or DisplayPort ports. **VGA does not support voice transmission.**



PS: if one USB port of laptop does not supply enough power. Please insert another USB plug to laptop, which supply double power.

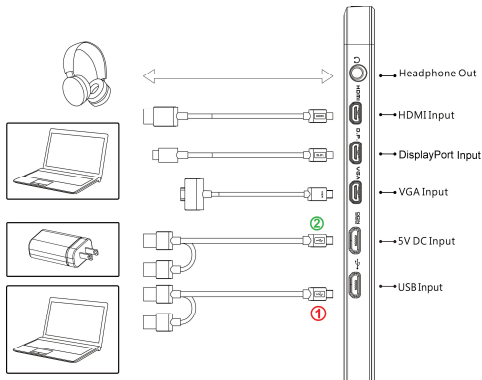
2. Connection method for On Lap 1303I

① Connect USB Touch Output and Power Cable' s Micro USB (B type) connector to On-Lap 1303I' s Micro USB port.  Connect the other end, USB connector to USB port of laptop. With this connection, laptop will provide power and touch signal to On-Lap 1303I.

If one USB port on laptop is unable to provide enough power, please connect the two USB connectors to two USB ports on laptop, this can provide double power.

② Or connect the second USB power cable to the 5V 2A charger.


After then connect Video cable. Only when micro-HDMI or DisplayPort is connected will the Monitor have sound. **VGA does not support voice transmission.**



Caution: Micro USB port  can transmit both touch signal and power , but Power port **DCIN** can only transmit power. If Micro USB port  is not connect to USB port of laptop, touch function can not be enabled.

Chapter 3 Power On and Off the On-Lap Monitor

Section 1 Power On and Off the On-Lap

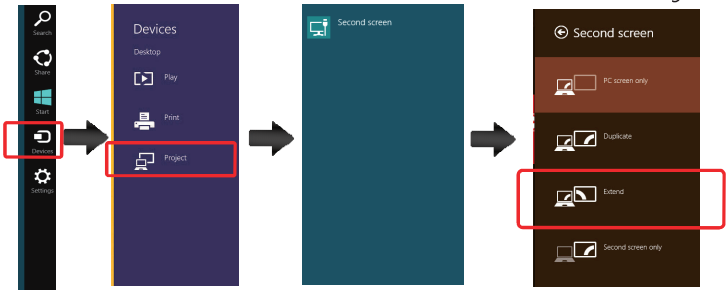
1. From Off state to On state: Press Power Button  to activate On/Off.
2. First time use: When Micro USB to USB touch signal and power connect to USB port on computer or 5V DC Charger, On-Lap will automatically start and detect video signal to automatically display video. (Connection method can refer to Chapter 2 Section 2)

Section 2 Monitor Display Setting


1. Set Extended Display Mode – Windows 8 /8.1

Select directly from right side of screen [Devices] ->select [Project]->select [2nd Monitor] -> select [Extend Mode]

For screen resolution setting please refer to the followings.

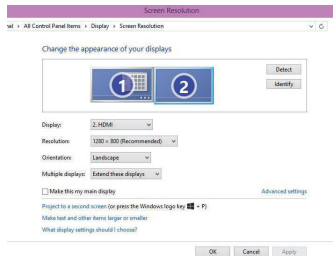


2. Resolution setting – Windows 7 system

- Click on  icon
- Click on **Control Panel > Appearance and Personalization**
- Click on **Display > Connect to an external display.**

Normally Display ① is the laptop' s monitor, Display ② is the external monitor. Click on **Detect** if you are unsure.

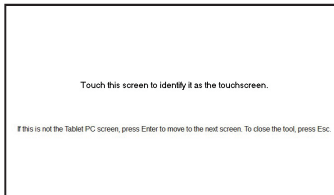
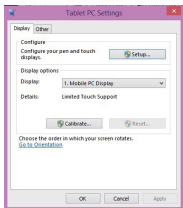
- At **Display**, select "2.HDMI" (digital video) or "2. display device: VGA" (analog video) for **Display**
- **Select Resolution "1920x1080" for 1303H& 1303I**
Select Resolution "1366x768" for 1303A
- Select "Landscape" or "Portrait" for **Orientation**.
- Select "Extend these displays" for **Multiple display**, and drag Display 2 to the right side of Display 1. For Duplicated mode, select "Duplicate these displays".
- Select OK and exit after saving the settings.



Section 3 Windows 7/8.1 Touchscreen Setting (Only 1303I supports Touch Function)

If the computer is unable to automatically start touchscreen function, please use the "Tablet PC Setting" of the Windows 7/8.1 Control Panel to perform touchscreen setting.

As below Fig., please select “Setting (S)”, when Windows message appears on the screen of On-Lap 1303I, follow the direction to touch the screen and the setting is complete.



Section 4 Windows 8.1 Touch Gesture Description

Common Touch Gesture Introduction:

1. Use finger to swipe in from edge:

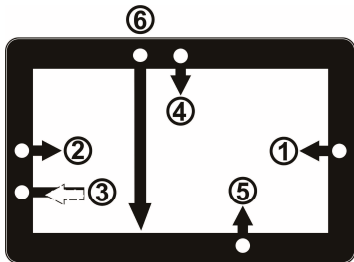
① Swipe in from the right edge of the screen (Arrow 1): Open the five charms – Search, Share, Start, Devices, and Settings

② Swipe in from the left edge of the screen (Arrow 2): Switch between apps

③ Swipe in from the left edge of the screen then out toward the left edge of the screen (Arrow 3): Display all apps

④⑤ Swipe in from the top edge (Arrow 4) or bottom edge (Arrow 5): Display commands of app, like Add New, Reminder, etc.

⑥ With touch, drag the app from the top edge of screen (Arrow 6) to the bottom of the screen: Close app



2. Select item: Tap on the item to open. This function is similar to clicking on mouse.
3. Press and hold the item for a few seconds then release: Display item information. This function is similar to right-clicking on mouse.
4. Zoom in and out: Touch the item with two fingers then move fingers toward each other (pinch) or away from each other (stretch).
5. Slide finger on the screen, horizontally or vertically, to move through content. This function is similar to scrolling with a mouse.

Chapter 4 Hot Keys and OSD Instructions

Section 1 Hot Keys and LED Light Description

***Notice:** If need to adjust “Increase/up” or “Decrease/down” continuously, press the button and hold. Do not press two buttons at the same time, due it may cause no response or fault response.

LED Lights Description :

It shows green light when turn on On-Lap Monitor and shows red light when stand by.

Hot Keys Description

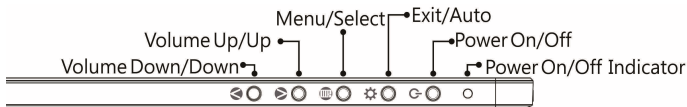
⏻ Power: Press the Power Button can power on/off the Monitor.

⚙️ Exit/Auto Adjustment: In the OSD panel, press the Exit Button to exit and back to the previous page. When there is no OSD menu, press this Button will activate automatic adjustment function (only pertains to analog VGA signal)

☰ Menu/Select: Press the Menu Button to launch OSD panel.

⬆️ Increase Volume/UP: Press this Button to increase the volume of speakers. If the OSD menu is launched, press this button will move up or move left the list. Press and hold for automatic continuous increase.

⬇️ Decrease Volume/Down: Press this Button to decrease the volume of speakers. If the OSD menu is launched, press this button will move down or move right the list. Press and hold for automatic continuous decrease.



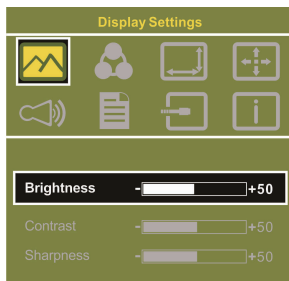
Section 2 OSD Description

1. Basic Button Operation

Press **☰** button to launch the OSD panel. Press **⬆️** or **⬇️** to view the functions. To adjust a certain function, press **☰** to launch it. If the selected function consists of sub-menu, press **⬆️** or **⬇️** again to view the sub-menu. When the desired function is highlighted, press **☰** to launch it. Press **⬆️** or **⬇️** to change the setting. To exit, press **⚙️** to exit. Repeat the preceding steps to adjust other setting.

2. Display Settings

As shown in Fig., after Display Settings is launched, can adjust **Brightness**, **Contrast**, and **Sharpness**.



3. Color Setting

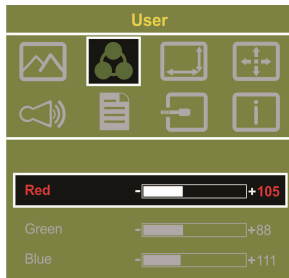
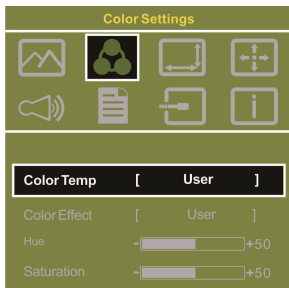
As shown in Fig., after Color Settings is launched, can adjust **Color Temp** and **Color Effect** to adjust screen color setting.

Hue setting can make the image color lean toward green or purple

Saturation setting can make saturation more vivid or more black and white

At Color Temperature, select "User", can adjust RGB color setting, please refer to Fig. Select "Cool" can increase the blue saturation of the image. Select "Warm" can increase the red saturation of the image. At Color Effect, select "Standard", "Game", "Movie", "Photo" or "Vivid"

Select "Standard" can adjust the Hue and Saturation of Red/Blue/Green/Cyan/Yellow/Magenta

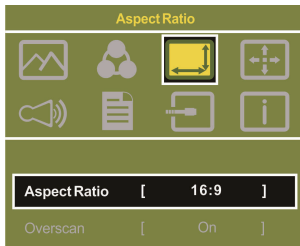


4. Aspect Ratio

Please refer to Fig. Suggested setting is 16:9. When HDMI image is 4:3 format, can select 4:3, make image not enlarge to 16:9 and change shape. Using VGA image input won't have this function

Notice: When use 4:3 setting, the left and right sides of On-Lap 1303 will show black frame. Because its not full screen image display, thus image location and press signal location will not be the same, will not be able to press the correct location

Overscan: Only when input HDMI Video signal (ex. 1080P/720P/576P /480P) , can use such function. Use this function can adjust the image scan area.



5. Manual Image Adjust

Auto Adjust: Only when input VGA signal can use such function. Will automatically adjust VGA setting

H.Position: Moves the display area left and right .

V.Position: Moves the display area up and down

Clock: Adjust the pixel clock for user's preference

Phase: Adjust the pixel phase for user's preference

6. Audio: Adjust volume or select mute

7. OSD Menu

OSD Timer: Adjust OSD Time

OSD H. POS: Moves OSD left and right

OSD V. POS: Moves OSD up and down

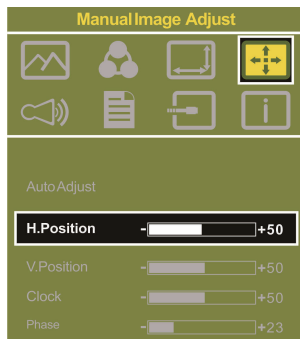
OSD Transparency: Makes OSD transparent

Language: Select OSD language

Reset: Restore to factory setting

8. Input Source: Select VGA signal source, HDMI signal, DisplayPort signal or Auto Detect

9. Information: Display factory version



Section 3 Low Power Protection Warning

If the volume setting is too high, the power requirement may be greater than the power provided by computer or external 5V DC Charger. At this time, the Low Power Protection Warning will appear. Please reduce the volume immediately. Connect the two USB connectors of Micro USB Touch and Power Cable to the two USB ports on computer. If the volume is not reduced in time, the Monitor will decrease the volume and brightness automatically.

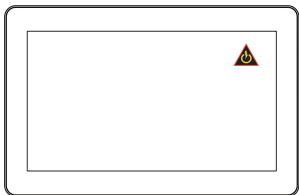


Fig.: Low voltage warning shown at upper right corner on screen.

Chapter 5 Specification

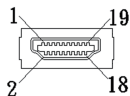
Section 1 Plug and Play

The On-Lap Monitor conforms to VESA DDC standard and supports VESA DDC2. DDC2B is a bi-directional data channel based on I²C protocol. The host can request EDID information over the DDC2B channel. The On-Lap Monitor is able to inform the host system of its identity, and depending on the level of DDC used, communicate additional information about its display capabilities.

Section 2 Pin Assignment

1. HDMI Connector Pinout

Fig.: HDMI-A Connector
(Connect to HDMI port)

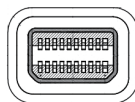


Pin	Name	Pin	Name
1	TMDS Data2+	11	TMDS Clock Shield
2	TMDS Data2 Shield	12	TMDS Clock -
3	TMDS Data2 -	13	CEC
4	TMDS Data1+	14	Reserved
5	TMDS Data1 Shield	15	SCL (I ² C Serial Clock for DDC)
6	TMDS Data1 -	16	SDA (I ² C Serial Data Line for DDC)
7	TMDS Data0+	17	DDC/CEC Ground
8	TMDS Data0 Shield	18	+5 V Power
9	TMDS Data0 -	19	Hot Plug Detect
10	TMDS Clock+		

2. mini-DisplayPort Connector Pinout

Pin	Name	Pin	Name	Pin	Name
1	GND	8	GND	15	ML_Lane2(p)
2	Hot Plug Detect	9	ML_Lane1(p)	16	AUX_CH(p)
3	ML_Lane0(p)	10	ML_Lane3(p)	17	ML_Lane2(n)
4	CONFIG1	11	ML_Lane1(n)	18	AUX_CH(n)
5	ML_Lane0(n)	12	ML_Lane3(n)	19	GND
6	CONFIG2	13	GND	20	DP PWR
7	GND	14	GND		

Pin : mini-DisplayPort Connector
(Connect mini-DisplayPort)



3. VGA Connector Pinout

Pin No.	Name	Pin No.	Name	Pin No.	Name
1	RED	6	RGND	11	NC
2	GREEN	7	GGND	12	SDA
3	BLUE	8	BGND	13	HSYNC
4	NC	9	+5V	14	VSYNC
5	GND	10	SGND	15	SCL

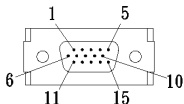


Fig.: VGA connector
(connect to PC' s
VGA port)

4. USB Connector Pinout

Pin No.	Name
1	Vcc (+5V)
2	D+
3	D-
4	Ground

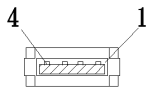





Fig. : USB Connector

Section 3 Specification

Model	On-Lap 1303H	On-Lap 1303I	On-Lap 1303A
Panel type / backlight	13.3" TFT IPS (LED Backlight)	13.3" TFT IPS (LED Backlight)	13.3" TFT TN (LED Backlight)
Resolution Color Depth	1920 x1080/ 16.7M Colors	1920 x1080/ 16.7M Colors	1366 x768/ 262K Colors
Pixel pitch	0.1529 mm	0.1529 mm	0.2148 mm
Viewing angle (U/D/L/R)	89°/89°/89°/89° (Typical)	89°/89°/89°/89° (Typical)	20°/45°/45°/45° (Typical)
Contrast ratio	700:1(Typical)	700:1(Typical)	400:1(Typical)
Response time	14 (ms)(Typical)	14 (ms)(Typical)	8 (ms)(Typical)
Luminance	300 (cd/m ²)(Max.)	250 (cd/m ²)(Max.)	200 (cd/m ²)(Max.)
Resolution Specification	1920*1080(60Hz/50Hz);1680*1050(60Hz/50Hz);1680*900 (60Hz/50Hz);1440*900(60Hz/50Hz);1440*1050(60Hz/50Hz);1366*768 (60Hz/50Hz);1280*1024(60Hz/50Hz);1280*800(60Hz/50Hz);1280*768 (60Hz/50Hz);1024*768(60Hz/50Hz);800*600(60Hz/50Hz);640*480 (60Hz/50Hz) Caution: If the vertical refresh rate of graphic card surpasses the specification of support or has a significant difference with the specification mentioned, may result in permanent damage to liquid crystal display		
Video Supported Modes	1080P(60Hz/50Hz);1080i(60Hz/50Hz);720P(60Hz/50Hz); 480P(60Hz) (Supports HDCP)		
Touch Technology Operating System	No touch screen	Projected capacitive touch screen; 10-point multi-touch; Support Windows8.1 /8 /7	No touch screen
Screen coating	No touch screen	Touch screen hardness ≥ 7H	No touch screen
Speaker	2x 1.0W(Max.) (Rated Impedance 4 Ω at 2KHz)	2x 1.0W(Max.) (Rated Impedance 4 Ω at 2KHz)	2x 1.0W(Max.) (Rated Impedance 4 Ω at 2KHz)
Rating voltage	5V  DC	5V  DC	5V  DC
Rating current	2.0 A	2.0 A	1.5A
Standby Current	80mA	80mA	80mA

Section 4 Trouble Shooting

1. Image or Audio output troubles

Problem	Solution
No response when finger touches on monitor	<ol style="list-style-type: none"> 1. Check if Micro USB Touch and Power Cable is properly connected between the computer and On-Lap 1303' s USB port. Turn down the monitor and unplug the cable. Plug the cable and turn on the monitor again. 2. Check if Micro USB Touch and Power Cable is mistakenly connected to DC IN port. If so, only power is transmitted and no touch is available. 3. Refer to Charter 3 Section 3, do Windows 7/8.1 touchscreen setting
No image	<ol style="list-style-type: none"> 1. Check if Power On/Off Indicator shows green light. If not, it means no power connection. Please refer to user manual instruction to connect power. 2. Check if VGA/HDMI Video Cable is connected between On-Lap' s connector port and computer' s connector port. 3. Check if Micro HDMI Video Cable connector is accidentally connected to the VGA port/ DisplayPort port on On-Lap.
OSD displays " No Signal" warning	Please check if the Video Cable is correctly connected to On-Lap Monitor' s video input port and laptops' video output port.
Image disappears, or image size is too big, too small, or image is not centered.	The trouble may be caused by VGA video input. Please adjust resolution, clock, horizontal position and vertical position via OSD.
Monitor has image but no sound	<ol style="list-style-type: none"> 1. Press UP Button to increase audio level. 2. Use of VGA input will not have audio signal.
Monitor reboots or monitor displays Low Power Protection Warning	Because the output current is greater than the input current, please lower the audio and brightness level. Connect the two USB connectors of Micro USB Touch and Power Cable to the two USB ports on the computer to increase power. Or using 5V 2A Charger to supply power.

2. The unavailability of " Duplicate these displays" or " Extend these displays" in Display setting may be limited by the graphics chip of the laptop or have the graphic chip features limited due to the power saving mode of the laptop or have the graphic chip driver updated. Please consult your laptop manufacturer or graphic chip manufacturer.



GeChic Corporation
5F-3, No. 138, Zhongming S. Rd.,
West Dist., Taichung, Taiwan (R.O.C.)
Customer Service: service@gechic.com
www.gechic.com