



# HIFIMAN HE-560

## Owner's Guide

[www.hifiman.com](http://www.hifiman.com)



Customer Service: 201-HIFIMAN(443-4626)

[customerservice@hifiman.com](mailto:customerservice@hifiman.com)

[www.hifiman.com](http://www.hifiman.com)



[www.hifiman.com](http://www.hifiman.com)

Thank you for purchasing the HIFIMAN HE-560, one of the finest full-size headphones on the market today. HiFiMAN is a leading designer and manufacturer of high performance headphones, headphone amplifiers and portable players.

This Owner's Guide is intended to provide a useful overview of your new HE-560 and how to best operate it for many years of enjoyment, safety and reliability. Please take the time to familiarize yourself with its features. If you have any questions or need additional information, contact your authorized HIFIMAN dealer or us directly.



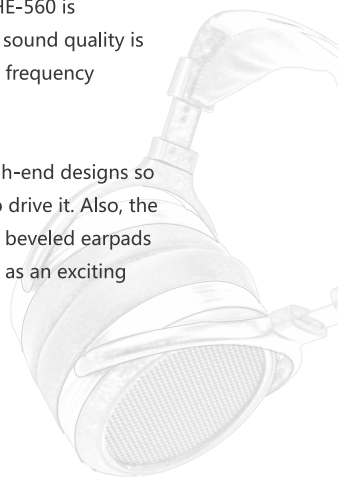


## Product Overview

The HIFIMAN HE-560 is an open-backed headphone with specially-designed planar magnetic drivers. Connection is made via the supplied cable with screw-on connectors using separate ground leads for each channel to minimize crosstalk between the channels. The HE-560's 90dB sensitivity is higher than similar designs and allows it to be driven with a conventional headphone amplifier. The HE-560 offers impressive frequency response from 15Hz to 50KHz and with all of the dynamics and lifelike realism that HIFIMAN headphones are famous for.

Compared with previous HIFIMAN headphones, the HE-560 features an all-new headband design, angled pads and rotation at the top of the gimbals for better fit and improved comfort. HE-560 is significantly lighter than comparable designs. The sound quality is also improved with smoother treble, plenty of low frequency extension with tighter deeper bass.

HE-560 is higher in efficiency than some other high-end designs so you don't need an extremely powerful amplifier to drive it. Also, the HE-560's robust build quality and newly-designed beveled earpads will provide you with unsurpassed comfort as well as an exciting listening experience.







## Key Features and Specifications

- Frequency response: 15Hz to 50KHz
- Impedance: 50+/-8 Ohms
- Efficiency: 90dB/mW
- Weight: 13.3Oz (375g)

## Accessories

- headphone cable (2m or 6.6ft)
- Earpads 1 pair (on the headphones)
- Note : The HE-560 is designed to be used with its ear pads on at all times. If for some reason, you need to remove the ear pads, please replace them as soon as possible.





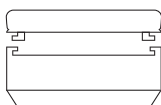
## Headband Adjustment

If the top of the headband does not touch your head, you can move the sliding black block on each side of the headband to make it rest on top of your head.

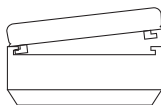


## Earpad replacement

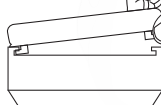
To replace the earpads, first remove the earpads. Then you will see there is gap between two screws inside the driver. Insert two adjacent plastic clips inside the earpad into the gap. Use your middle finger to hold the earpads inside with your thumb holding the outside. Push the earpads slightly with your thumb until the remaining clips are inserted. Revolve the earpad so that it is firmly installed.



①



②



③



## Set-up and Operation

1. Please allow at least 150 hours of constant use for break-in of your new headphone. This break-in period does not have to be at high volume.
2. To connect your headphones to an amplifier, please use the supplied cabling. The mini-coax plug with the red dot goes to the right side marked with R. (Depending on the cable in use, the cable itself can also show L and R on the plugs.) Push the connector straight onto the socket and then use your fingers to tighten the washer. When tightening, please make sure to move the washer only and not the cable as such. A loose connection can lead to drop outs and distortion. Repeat the process with the other mini-coax connector.
3. The supplied cable adapter with the large  $\frac{1}{4}$ " (6.35mm) jack is connected with the typical headphone output of an amplifier or even better with a headphone amplifier. Please be aware that many home amplifiers will switch off the loudspeaker output when a headphone is connected.
4. To clean your headphone, please use a soft, slightly damp cloth only. Do not use any detergents and make sure not to let any fluid enter the open sides of the headphone. The leather headband can be maintained using standard leather care products. When your earpads become worn and no longer offer a good connection to your skull, you should replace them with new ones which can be supplied from your dealer. Note: The internal drivers do not require maintenance. Any attempt to remove or modify them will void your warranty.



## Warranty

- One-year free repair or replacement when used according to our recommended instructions. Contact us first to troubleshoot before returning and if needed an RA will be issued. Return shipping to HiFiMAN or authorized service facility is owner's responsibility.
- For residential use only.

**For any further information or questions, please contact your authorized HiFiMAN dealer. Or email us directly at [customerservice@hifiman.com](mailto:customerservice@hifiman.com).**

