

# D7w

## 7" HD-SDI LCD Monitor QUICKSTART GUIDE



Checked by

### What's included

- ☐ 1 x D7w Monitor
- ☐ 1 x AC Adapter
- ☐ 1 x SM201 Shoe Mount
- ☐ 1 x DV Battery Adapter (Check one) —
  - ☐ BP5-S Sony "L" Series
  - ☐ BP5-SU Sony "BP-U" Series
  - ☐ BP5-C Canon "900" Series
  - ☐ BP5-E6 Canon E6 Battery
  - ☐ BP5-P Panasonic "D54" Series
  - ☐ BP5-PG6 Panasonic G6 Battery

### CONDITIONS OF WARRANTY SERVICE

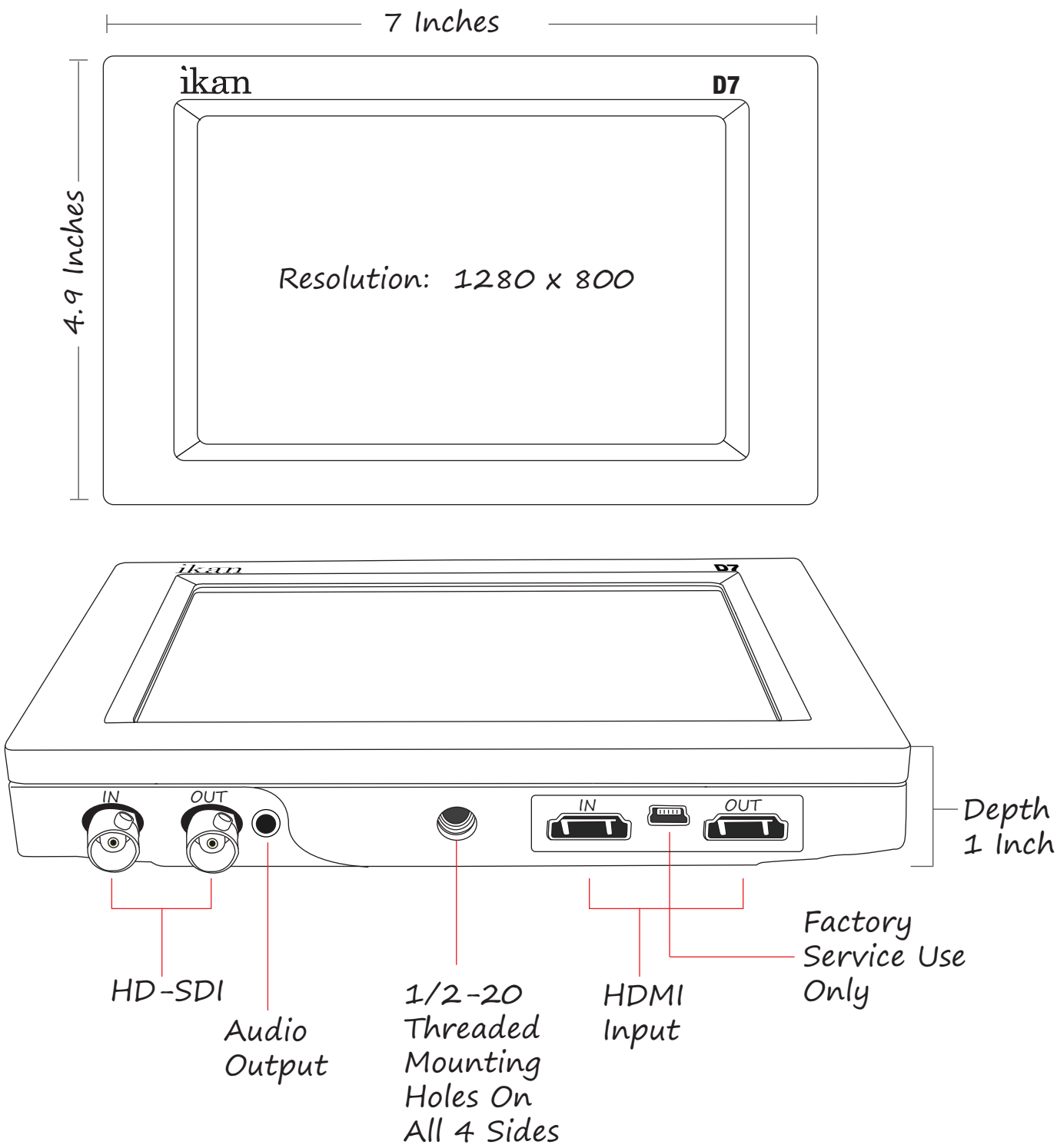
- Free service for one year from the day of purchase if the problem is caused by manufacturing errors.
- The components and maintenance service fee will be charged if the warranty period has expired.

Free Service will not be Provided in the Following Situations: (\* Even if the product is still within the warranty period.)

- Damage caused by abuse or misuse, dismantling, or changes to the product not made by the company.
- Damage caused by natural disaster, abnormal voltage, and environmental factors etc.

D7w

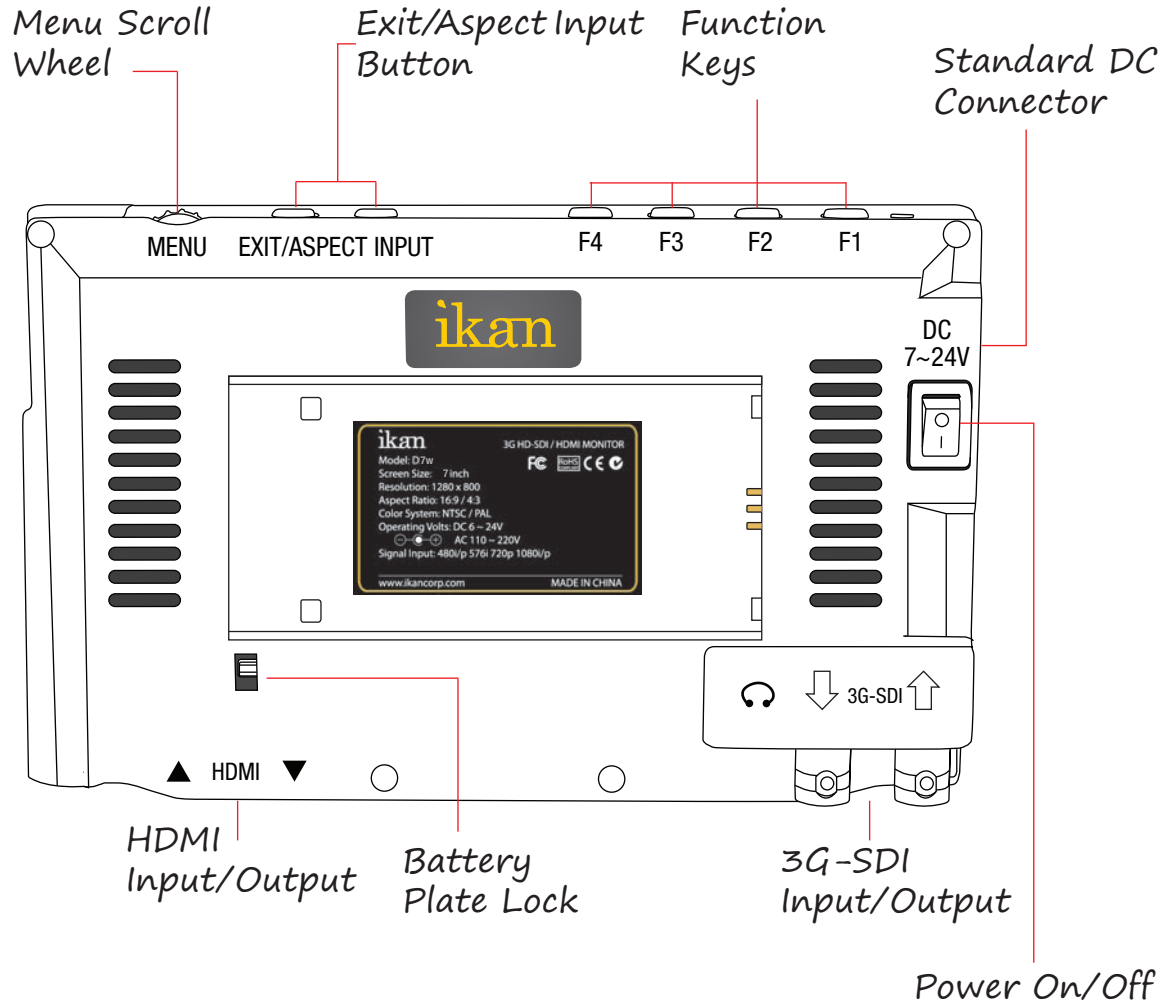
7" HD-SDI LCD Monitor QUICKSTART GUIDE



ikan

# D7w

## 7" HD-SDI LCD Monitor QUICKSTART GUIDE



### SPECIFICATIONS

|                  |                   |
|------------------|-------------------|
| Diagonal:        | 7-inch            |
| Resolution:      | 1280 x 800        |
| LCD Brightness:  | 400 NIT           |
| Contrast Ratio:  | 800:1             |
| Viewing angles:  | 178 (H) 178 (V)   |
| Operating Volts: | DC 6v to 24v      |
| Dimension:       | 4.9"H x 7"W x 1"D |
| Weight:          | 0.6 lbs           |
| Video Inputs:    | HD-SDI, HDMI      |
| Video Outputs:   | HD-SDI            |
| Audio Output:    | Headphone         |

### SUPPORTED RESOLUTIONS & FRAME RATES

|         |   |
|---------|---|
| 3G SDI: | 1920x1080p @ 50, 59.94, 60 Hz                           |
| HD SDI: | 1280x720p @ 50, 59.94, 60 Hz                            |
|         | 1920x1080i @ 50, 59.94, 60 Hz                           |
|         | 1920x1080psf @ 23.98, 24, 25, 29.97, 30 Hz              |
|         | 1920x1080p @ 23.97, 24, 25, 29.94, 30 Hz                |
| SD SDI: | 720x480i @ 60Hz   |
|         | 720x576i @ 50Hz   |
| HDMI:   | 720x480i & 720x480p @ 59.94, 60 Hz                      |
|         | 720x576i & 720x576p @ 50 Hz                             |
|         | 1280x720p @ 50, 59.94, 60 Hz                            |
|         | 1920x1080i @ 50, 59.94, 60 Hz                           |
|         | 1920x1080psf @ 24, 25, 29.97, 30 Hz                     |
|         | 1920x1080p @ 23.97, 24, 25, 29.94, 30, 50, 59.94, 60 Hz |

ikan

## 7" HD-SDI LCD Waveform Monitor QUICKSTART GUIDE

### CONFIGURATION OF SETTING MENUS

#### GUIDES

|               |                       |
|---------------|-----------------------|
| Guides Full   | OFF / 90% / 80% / 4:3 |
| Guides 16:9   | OFF / 90% / 80% / 4:3 |
| Guides 4:3    | OFF / 90% / 80%       |
| G. Background | Normal / Half / Black |
| Crosshair     | Off / On              |
| Return        |                       |

Display a crosshair on the center of screen.

#### Notes:

<sup>1</sup> DSLR Scaling (for HDMI only)

#### VIDEO CONFIGURATION

|             |                                |
|-------------|--------------------------------|
| Brightness  | 0-100                          |
| Contrast    | 0-100                          |
| Chroma      | 0-100                          |
| Sharpness   | 0-100                          |
| Tint        | 0-100                          |
| Color Temp. | 5600K / 6500K / 9300K / Manual |
| Auto        |                                |
| Return      |                                |

This function recalls user defined values settings .The user setting will remain in memory indefinitely and can be erased by using the reset option in the main menu.

#### SYSTEM CONFIGURATION

|                   |                         |
|-------------------|-------------------------|
| OSD Language      | English / 简体中文          |
| OSD Duration      | 5-60                    |
| Menu Setup        | User1-5                 |
| Backlight         | 5-100                   |
| DSLR Auto Scaling | Off / Full / 16:9 / 3:2 |
| WF. Background    | 0-10                    |
| Peaking Setting   |                         |
| Peaking Factor    |                         |
| Peaking Color - R | 0-255                   |
| Peaking Color - G | 0-255                   |
| Peaking Color - B | 0-255                   |
| System Reset      |                         |
| Return            |                         |

The DSLR Scaling<sup>1</sup> function will allow users to extend their DSLR camera's HDMI video output any option of four – Normal, 3:2, 16:9 or Full Screen – convenience made simple.

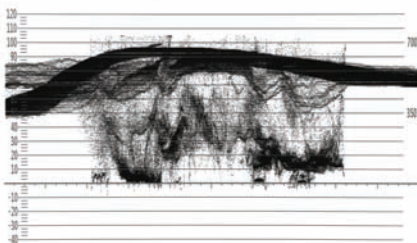
Allows you to adjust the transparency of the Waveform when overlaid on the bottom of the screen.

Allows you to adjust the sensitivity of the peaking feature from 1 - 10.

Allows you to change the color of the peaking outlines from 0 -255 for red, blue, and green.

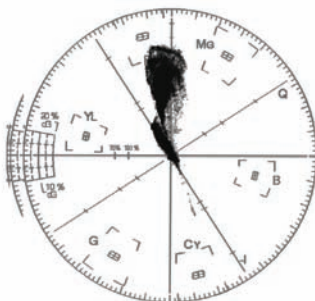
#### Waveform

This essential feature assists with the calibration of professional video cameras. It shows the overall brightness of the image assisting the video professional in correcting exposure. The waveform feature also checks the evenness of the lighting when lighting a chromakey or background.



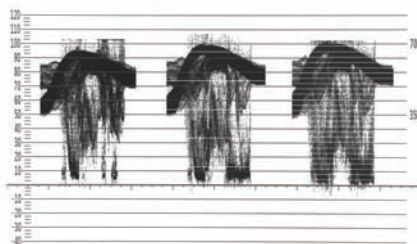
#### Vectorscope

The D7w uses vectorscope to help set and verify skin tones and monitor white balance. The vectorscope function also verifies and checks the overall tint and hue of an image.



#### RGB Parade

The RGB parade splits the image into separate red, green, and blue channels and shows you the color values for each. RGB Parade is fundamental in balancing out the shadow region when leveling a shot. Furthermore, this feature helps the video professional to instantly see what color cast might be in an image; thus, making it extremely helpful when verifying the white balance.





## 7" HD-SDI LCD Waveform Monitor QUICKSTART GUIDE

### CONFIGURATION OF SETTING MENUS

#### FUNCTION SETUP

- Luma Under Warn
- Luma Over Warn
- F1 Key
- (Same As
- F2, F3 & F4 Key)
- Peaking
- False Color
- Clip Guide
- Underscan
- DSLR Scaling
- Waveform
- Check Field
- Pixel
- Window 1
- Window 2
- HV Delay
- Guides
- Crosshair

#### EXIT

User programmable function keys. For quick access, the user may program the F1, F2, F3 and F4 buttons to enable frequently accessed monitor features via the main monitor configuration menu.

As an additional tool associated with the D7w's False Color feature, ikan's exclusive Adjustable Under Exposure and Over Exposed Warning feature gives the operator full control of the D7w False Color brightness values. By setting the preferred IRE exposure limits, the operator is warned when the image exposure is exceeding or falling under the preset IRE limit, providing customizable, full image exposure control.

The D7w is equipped with Monochrome Peaking features which highlight the desired focus area in a bright, red outline. The operator adjusts the focus control until the red indicator outlines on the desired area are razor sharp, indicating optimal focus. For the best results, be sure the subject is properly exposed.

The False Color feature utilizes a full spectrum of assigned color indicators, ensuring flawless shot exposure. As the camera Iris is adjusted, the subject of the image will change color based on specific brightness values indicating optimal exposure. See included chart for color assignments.

The D5 offers adjustable upper Clip Guide levels to accurately display overexposed images in any shooting condition. The operator simply assigns the upper IRE to their preference and any exposure over the set IRE limit will flash in a vivid purple, indicating only the over exposed area.

Enabling this allows you to toggle between 3 different scopes: Waveform, Vectorscope, and RGB Parade.

Allows to see the image in monochrome or only the red, blue, or green channels.

The LCD panel in this display has a native display of 1280 x 800 pixels. A signal of any other resolution is scaled to fit this native resolution. There may be time when it is desired to view the incoming signal without scaling. Enabling Pixel to Pixel mode turns off the scaling and displays a 1280 x 800 pixel window of the original image. Each pixel of the panel displays one pixel of the original image. The user may use the scroll wheel on top of the monitor to move the window left, right. Push the scroll wheel again to toggle up and down.