

Thank you for choosing Impact.

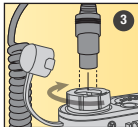
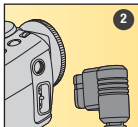
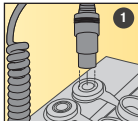
This flash cable is made with high-quality, wear-resistant insulated wires. It connects your battery pack to your flash. The mechanism ensures a secure connection between the battery pack and the cable. This cable is compatible with major battery pack brands, including Impact, Bolt, Quantum, Lumedyne, and Dynalite.

Precautions

- Use only as instructed. Both terminal connectors output high voltage.
- Connect your flash unit to your battery pack only with a cable that is compatible with both.
- Do not use if any wire is exposed as a result of damage or wear.
- Keep out of reach of children.
- Make sure the cable is firmly connected at both ends when using your battery pack.
- Unplug this cable from the sockets on the battery pack and flash unit when it is not in use.

Plugging in the Cable

1. Plug the 5-pin metal connector of the cable firmly into the output socket on your battery.
2. Plug the other end of the cable securely into the compatible power port on your flash unit.
3. For battery packs with compatible locking collars such as those from Bolt and Quantum Instruments, you can lock the cable into the socket to secure the connection. To take advantage of this feature, make sure the cable is fully seated in the socket, and then rotate the battery pack's locking collar to the locked position.





Flash Cable Instructions

For use with other battery pack brands, follow the instructions provided by the battery pack manufacturer.

Important! Load your flash unit with its standard batteries before connecting it to your battery pack. Most compatible flash units require the standard batteries to be installed in order to power the computer functions that allow the flash to work.

One-Year Limited Warranty

This IMPACT product is warranted to the original purchaser to be free from defects in materials and workmanship under normal consumer use for a period of one (1) year from the original purchase date or thirty (30) days after replacement, whichever occurs later. The warranty provider's responsibility with respect to this limited warranty shall be limited solely to repair or replacement, at the provider's discretion, of any product that fails during normal use of this product in its intended manner and in its intended environment. Inoperability of the product or part(s) shall be determined by the warranty provider. If the product has been discontinued, the warranty provider reserves the right to replace it with a model of equivalent quality and function. This warranty does not cover damage or defect caused by misuse, neglect, accident, alteration, abuse, improper installation or maintenance. EXCEPT AS PROVIDED HEREIN, THE WARRANTY PROVIDER MAKES NEITHER ANY EXPRESS WARRANTIES NOR ANY IMPLIED WARRANTIES, INCLUDING BUT NOT LIMITED TO ANY IMPLIED WARRANTY OF MERCHANTABILITY OR FITNESS FOR A PARTICULAR PURPOSE. This warranty provides you with specific legal rights, and you may also have additional rights that vary from state to state.

To obtain warranty coverage, contact the Impact Customer Service Department to obtain a return merchandise authorization ("RMA") number, and return the defective product to Impact along with the RMA number and proof of purchase. Shipment of the defective product is at the purchaser's own risk and expense.

For more information or to arrange service, visit www.impactstudiolighting.com or call Customer Service at 212-594-2353.

Product warranty provided by the Gradus Group. www.gradusgroup.com

IMPACT is a registered trademark of the Gradus Group.

© 2014 Gradus Group LLC. All Rights Reserved. Made in China.

