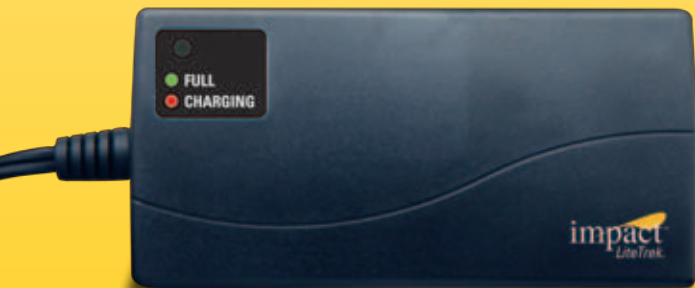


impact™

lighting equipment and accessories



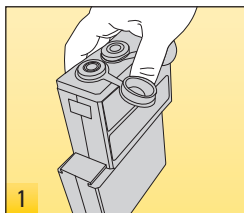
Mini LT Charger INSTRUCTIONS

Caution

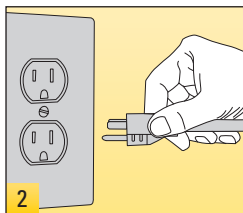
This charger was designed to recharge the Impact LiteTrek Portable Power Pack battery. Charging will reach 100% in about 4 hours. The charger will operate on either 120V or 220V.

- Only use the charger with designated Impact LiteTrek Portable Batteries.
- Recharge the battery before each use to ensure full charge.
- Recharge at room temperature (ideal).
- Do not interrupt the charging cycle, as this can affect the accuracy of the battery gauge.
- Battery module may be recharged without being connected to the power pack.
- Do not allow moisture or liquids to come in contact with the battery pack, charger or cables.

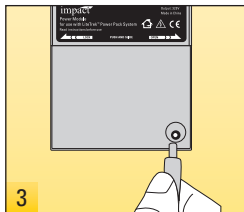
Operating Instructions



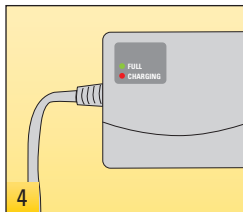
Disconnect any flash units or cables connected to the power module. Battery may be charged with or without the power module attached.



Connect the charger into an AC wall socket (110-240V). Plug adapters can be used to connect to worldwide power outlets. A voltage converter should not be used.



Connect the charger to the charger input socket on the battery pack.



The charging status is indicated on the charger with an LED light. Red indicates charging, while green indicates that charging is complete.

Warranty

Impact provides a limited warranty that this product is free from defects in materials and workmanship to the original purchaser under normal use for a period of one (1) year from the original purchase date. Impact's responsibility with respect to this limited warranty shall be limited solely to repair or replacement, at its option, of any product which fails during normal consumer use. This warranty does not extend to damage or failure which results from misuse, neglect, accident, alteration, abuse, improper installation or maintenance. To obtain a replacement during the time of this warranty, please return the defective item with proof of purchase along with an RMA number to the place of purchase. This warranty gives you specific legal rights, and you may also have other rights which vary from state to state.

©Copyright 2010 Impact

For our other lighting equipment,
please visit our website



www.impactstudiolighting.com