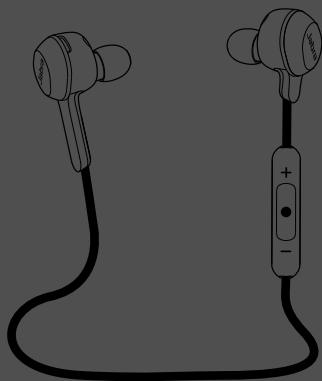


**Jabra**<sup>®</sup>  
YOU'RE ON

# JABRA SPORT ROX WIRELESS



User Manual

[jabra.com/sportroxwireless](http://jabra.com/sportroxwireless)

A BRAND BY

**GN Netcom**

---

© 2015 GN Netcom A/S. All rights reserved. Jabra® is a registered trademark of GN Netcom A/S. All other trademarks included herein are the property of their respective owners. The Bluetooth® word mark and logos are owned by the Bluetooth SIG, Inc. and any use of such marks by GN Netcom A/S is under license. (Design and specifications subject to change without notice).

---

MADE IN CHINA  
MODEL: OTE16



---

**Declaration of Conformity** can be found on [www.jabra.com/CP/US/declarations-of-conformity](http://www.jabra.com/CP/US/declarations-of-conformity)

# CONTENTS

|                                     |    |
|-------------------------------------|----|
| 1. WELCOME .....                    | 4  |
| 2. HEADSET OVERVIEW .....           | 5  |
| 2.1 INCLUDED ACCESSORIES            |    |
| 3. HOW TO WEAR.....                 | 6  |
| 3.1 CHANGING EARGELS                |    |
| 3.2 WEARING THE EARWINGS            |    |
| 3.3 WEARING THE FITCLIP             |    |
| 3.4 HOW-TO-WEAR VIDEOS              |    |
| 3.5 MAGNETIC EARBUDS                |    |
| 4. HOW TO CHARGE THE BATTERY.....   | 10 |
| 5. HOW TO CONNECT .....             | 11 |
| 5.1 CONNECT WITH A BLUETOOTH DEVICE |    |
| 5.2 CONNECT WITH AN NFC DEVICE      |    |
| 5.3 CONNECT MULTIPLE DEVICES        |    |
| 6. HOW TO USE .....                 | 13 |
| 6.1 MULTIPLE CALL HANDLING          |    |
| 6.2 LIST OF VOICE GUIDANCE          |    |
| 7. SUPPORT .....                    | 18 |
| 7.1 FAQ                             |    |
| 7.2 HOW TO CARE FOR YOUR HEADSET    |    |
| 8. TECHNICAL SPECIFICATIONS .....   | 19 |

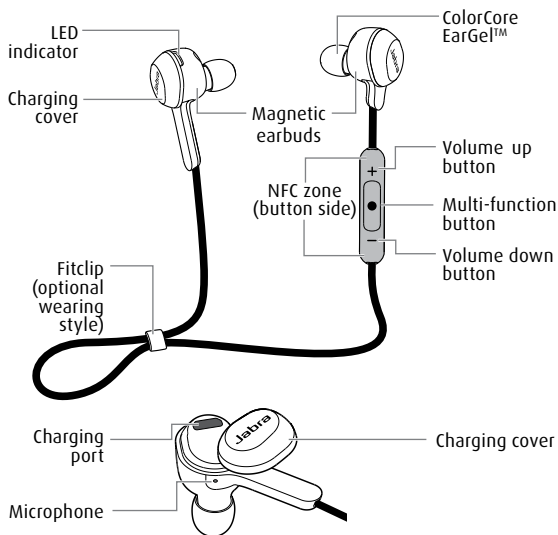
# 1. WELCOME

Thank you for using the Jabra Sport Rox Wireless.  
We hope you will enjoy it!

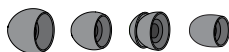
## **JABRA SPORT ROX WIRELESS FEATURES**

- High definition Dolby® Digital Plus enhanced sound with the exclusive Jabra Sound App
- Cable controls for easy music and call management
- Life proof: weather and dust resistant
- Premium materials: Kevlar reinforced cable design, solid steel earbuds
- Magnetic earbuds: Save battery when the headset is not in use
- NFC for easy pairing

## 2. HEADSET OVERVIEW



### 2.1 INCLUDED ACCESSORIES



4 ColorCore EarGels™



3 EarWings  
(Small, medium, large)



USB cable

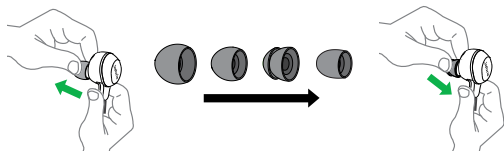
### 3. HOW TO WEAR



#### 3.1 CHANGING EARGELS

---

Choose between 4 Colorcore Eargels for optimal fit and comfort.

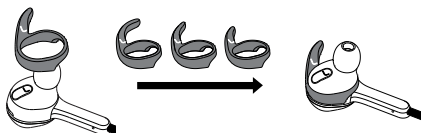


## 3.2 WEARING THE EARWINGS

---

Choose between 3 EarWing sizes for optimal fit and stability.

1. Align the L or R on the EarWing with the L or R on the earbud and gently pull the EarWing onto the earbud. Adjust by rotating, if needed.



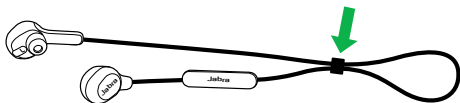
2. When wearing the headset, the EarWing fits into the ridge of the ear. Ensure the EarWing does not cover the microphone.



### 3.3 WEARING THE FITCLIP

---

Attach the fitclip to the cable, and adjust for optimal fit.



### 3.4 HOW-TO-WEAR VIDEOS

---

You can watch how-to-wear instructional videos for the ColorCore EarGels™, EarWings and fitclip at [jabra.com/roxwireless](https://jabra.com/roxwireless).

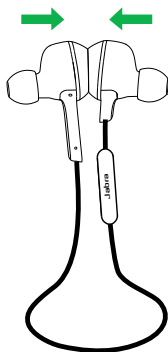


### 3.5 MAGNETIC EARBUDS

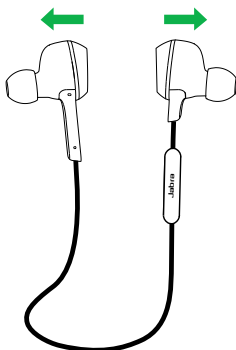
---

The earbuds are magnetic. Join or separate them to turn Standby mode on/off, or end/answer a call.

**Standby mode ON**



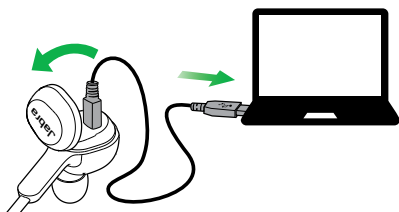
**Standby mode OFF**



**NOTE:** The headset will power off after 5 minutes when the magnetic earbuds are separated and the headset is not connected to a mobile device.

## 4. HOW TO CHARGE THE BATTERY

Remove the charging cover on the right earbud to expose the micro-USB port. Plug the USB cable into the headset and the PC to begin charging.



It takes approx. 2.5 hours to fully charge the headset.

**NOTE:** For safety reasons, it is recommended not to use the headset while it is charging.

# 5. HOW TO CONNECT

## 5.1 CONNECT WITH A BLUETOOTH DEVICE

---

1. Ensure the headset earbuds are separated.
2. Press and hold (5 secs) the **Multi-function** button until the LED rapidly flashes blue.
3. Wear the headset, and follow the voice-guided pairing instructions to pair to your Bluetooth device.

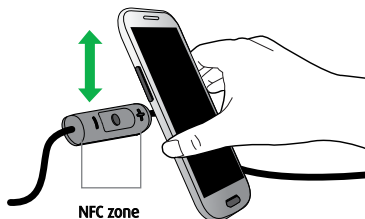
**NOTE:** After you have connected once, simply turn on the device to connect automatically.



## 5.2 CONNECT WITH AN NFC DEVICE

---

1. Ensure that NFC is enabled on your mobile device.
2. Ensure that the magnetic earbuds are separated.
3. Slowly slide the NFC zone of the headset (button side of the control box) directly against the NFC device until an NFC connection is confirmed.



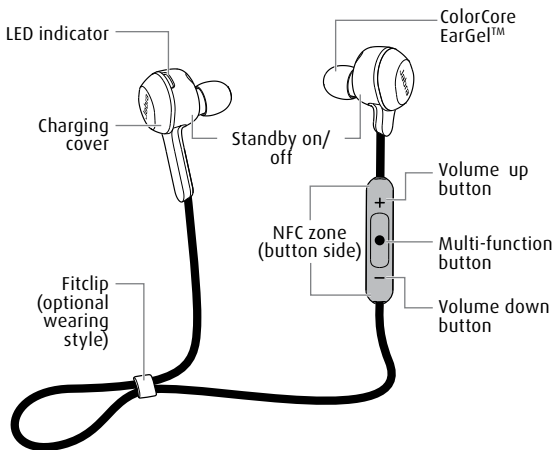
## 5.3 CONNECT MULTIPLE DEVICES

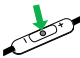

---

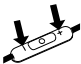
It is possible to connect multiple mobile devices to the headset using Bluetooth or NFC.

If two mobile devices are connected to the headset at the same time and one of the devices loses connection, the Multi-function button will control the remaining connected device (Pause/Play for Music and Answer/End for calls). To reconnect the disconnected device go to it's Bluetooth menu and reconnect.

## 6. HOW TO USE

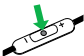


| FUNCTION   | ACTION  |
|--|---|
| Turn on headset  | Press and hold (5 sec) the <b>Multi-function</b> button until the LED flashes green |
| Turn off headset   | Press and hold (3 sec) the <b>Multi-function</b> button until the LED flashes red   |
|  Play/pause music     | Tap the <b>Multi-function</b> button  |
| Answer/end call  | Tap the <b>Multi-function</b> button, or separate/join the magnetic earbuds         |
| Reject call  | Double-tap the <b>Multi-function</b> button   |
| Redial last number   | Double-tap the <b>Multi-function</b> button when not on a call                      |
|  Standby mode on/off | Join/separate the <b>Magnetic earbuds</b>   |

|   |   |
|---|---|
| Adjust volume   | Tap the <b>Volume up</b> or <b>Volume down</b> button   |
| Mute  | Tap the <b>Volume up</b> and <b>Volume down</b> button at the same time   |
| Skip track forward  | Press and hold (2 secs) the <b>Volume up</b> button   |
|  Skip track back | Press and hold (2 secs) the <b>Volume back</b> button until you hear a beep, and press and hold the <b>Volume back</b> button again |
| Restart track   | Press and hold (2 secs) the <b>Volume back</b> button   |
| Battery status  | Tap the <b>Volume up</b> or <b>Volume down</b> button when not on a call or listening to music                                      |

## 6.1 MULTIPLE CALL HANDLING

The headset can accept and handle multiple calls simultaneously.

|   | FUNCTION  | ACTION   |
|---|---|--|
|   | End current call and answer incoming call         | Tap the <b>Multi-function</b> button                     |
|  | Switch between held call and active call          | Press and hold (2 secs) the <b>Multi-function</b> button |
|   | Put current call on hold and answer incoming call | Press and hold (2 secs) the <b>Multi-function</b> button |
|   | Reject incoming call, when on a call              | Double-tap the <b>Multi-function</b> button              |



## 6.2 LIST OF VOICE GUIDANCE

---

| CLICK TO LISTEN | WHAT YOU HEAR   |
|-----------------|---|
|                 | To connect Jabra Sport Rox wireless, go to the Bluetooth menu on your phone and select it from the list |
|                 | Connected   |
|                 | Two devices connected   |
|                 | Disconnected  |
|                 | Call ended  |
|                 | Redialling  |
|                 | Recharge battery  |
|                 | Battery low   |
|                 | Battery medium  |
|                 | Battery full  |
|                 | Muted   |
|                 | Unmuted   |

# 7. SUPPORT

## 7.1 FAQ

---

View the comprehensive FAQ on [Jabra.com/roxwireless](http://Jabra.com/roxwireless)

**Q Why do I hear crackling noises?**

A Bluetooth is a radio technology that is sensitive to objects between the headset and the connected device. Ensure the headset and the connected device are within range (up to 10m/33ft).

**Q What is the range of the headset?**

A The Jabra Sport Rox Wireless supports the following maximum ranges: 10m/33ft.

**Q Why do I not hear anything?**

A You might need to increase the speaker volume, or ensure that the headset is connected to a device.

**Q I am having Bluetooth connection problems**

A Check your mobile device's Bluetooth menu and delete/forget the headset. Re-connect the headset to your Bluetooth device following the Bluetooth connection instructions.

## 7.2 HOW TO CARE FOR YOUR HEADSET

---

- Always store the headset with the power off and safely protected.
- Avoid storage at extreme temperatures (above 65°C/149°F or below -10°C/14°F). This can shorten battery life and may affect the headset.

## 8. TECHNICAL SPECIFICATIONS

| JABRA SPORT ROX WIRELESS      | SPECIFICATION  |
|-------------------------------|--|
| Weight:                       | 19g  |
| Dimensions:                   | H 16.5mm x W 20mm x D 16mm   |
| Microphones:                  | MEMS microphone  |
| Speaker:                      | 6 mm dynamic speaker   |
| Operating range:              | 10m/33ft (phone dependent)   |
| Bluetooth version:            | 3.0  |
| Paired devices:               | Up to 8, connected to two at the same time (MultiUse™)                       |
| Supported Bluetooth profiles: | A2DP (v1.2), Hands Free Profile (v1.6), Headset profile (v1.2), AVRCP (v1.4) |
| Talk/music time:              | Up to 5.5 hours  |
| Standby time:                 | Up to 8 days   |
| Operating temperature:        | -10°C to 55°C (14°F to 133°F)  |
| Storage temperature:          | -10°C to 65°C (14°F to 149°F)  |
| Pairing passkey or PIN:       | 0000   |

