



KRAMER ELECTRONICS LTD.

USER MANUAL

MODELS:

PT-571

HDMI Line Transmitter

PT-572+

HDMI Line Receiver

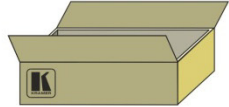
P/N: 2900-000690 Rev 7

PT-571, PT-572+ Quick Start Guide

This guide takes you through a basic installation and first-time use of your **PT-571** and **PT-572+**. For more detailed information, see the **PT-571, PT-572+** user manual. You can download the latest manual at <http://www.kramerelectronics.com>.

Step 1: Check what's in the box

- The **PT-571** HDMI Line Transmitter
- The **PT-572+** HDMI Line Receiver
- 2 power adapters (12V DC input)
- Mounting brackets
- 8 Rubber feet
- 1 Quick start guide
- 1 User Manual



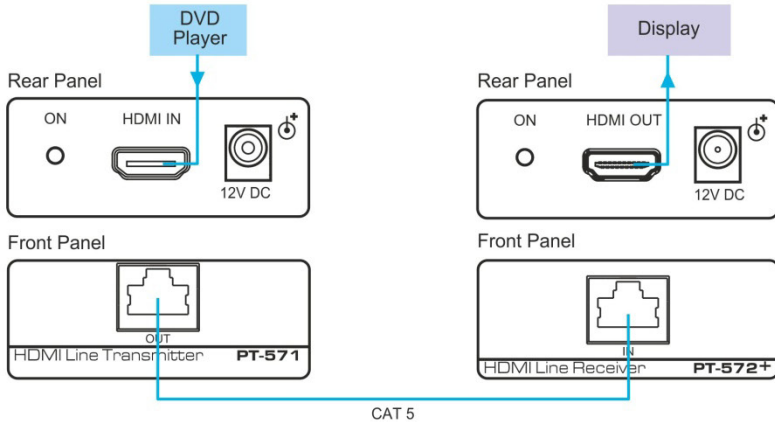
Save the original box and packaging materials in case your Kramer product needs to be returned to the factory for service.

Step 2: Install the PT-571, PT-572+

Mount the units in a rack or place them on a table.

Step 3: Connect inputs and outputs

Always switch OFF the power on each device before connecting it to your **PT-571, PT-572+**.



For best results, we recommend that you always use Kramer high-performance cables to connect AV equipment to the **TP-571** and **TP-572+**.

Step 4: Connect the power

Connect the power adapters to the **PT-571** and/or **PT-572+** and plug the adapter/s into the mains electricity.

Contents

1	Introduction	1
2	Getting Started	2
2.1	Achieving the Best Performance	2
3	Overview	3
3.1	Using Twisted Pair Cable	4
3.2	About the Power Connect™ Feature	4
3.3	About HDCP—General Description	4
3.4	About HDMI—General Description	4
4	Defining the PT-571 HDMI Line Transmitter	6
5	Defining the PT-572+ HDMI Line Receiver	7
6	Connecting the PT-571 and PT-572+ Transmitter Receiver Pair	8
6.1	Wiring the TP Line In/Line Out RJ-45 Connectors	9
7	Technical Specifications	10

Figures

Figure 1:	PT-571 HDMI Line Transmitter	6
Figure 2:	PT-572+ HDMI Line Receiver	7
Figure 3:	Connecting the PT-571/PT-572+ Transmitter/Receiver Pair	8
Figure 4:	TP Pinout Wiring	9

1 Introduction

Welcome to Kramer Electronics! Since 1981, Kramer Electronics has been providing a world of unique, creative, and affordable solutions to the vast range of problems that confront video, audio, presentation, and broadcasting professionals on a daily basis. In recent years, we have redesigned and upgraded most of our line, making the best even better!

Our 1,000-plus different models now appear in 11 groups that are clearly defined by function: GROUP 1: Distribution Amplifiers; GROUP 2: Switchers and Routers; GROUP 3: Control Systems; GROUP 4: Format/Standards Converters; GROUP 5: Range Extenders and Repeaters; GROUP 6: Specialty AV Products; GROUP 7: Scan Converters and Scalers; GROUP 8: Cables and Connectors; GROUP 9: Room Connectivity; GROUP 10: Accessories and Rack Adapters and GROUP 11: Sierra Video Products.

Congratulations on purchasing your Kramer **PT-571** and **PT-572+** transmitter/receiver pair, which is ideal for the following typical applications:

- Boardrooms, conference rooms and training rooms
- Presentation systems
- Signal distribution and home theater



You must use Shielded Twisted Pair (STP) cabling with the **PT-571** and **PT-572+**.



Use only a straight pin-to-pin cable with RJ-45 connectors that meet the EIA /TIA 568B standard. Failure to do so may result in damage to the device(s).

2 Getting Started

We recommend that you:

- Unpack the equipment carefully and save the original box and packaging materials for possible future shipment
- Review the contents of this user manual
- Use Kramer high performance high resolution cables

2.1 Achieving the Best Performance

To achieve the best performance:

- Use only good quality connection cables to avoid interference, deterioration in signal quality due to poor matching, and elevated noise levels (often associated with low quality cables)
- Do not secure the cables in tight bundles or roll the slack into tight coils
- Avoid interference from neighboring electrical appliances that may adversely influence signal quality
- Position your Kramer **PT-571** and **PT-572+** transmitter/receiver pair away from moisture, excessive sunlight and dust



Caution: No operator serviceable parts inside the unit

Warning: Use only the Kramer Electronics input power wall adapter that is provided with the unit

Warning: Disconnect the power and unplug the unit from the wall before installing



Go to <http://www.kramerelectronics.com> to check for up-to-date user manuals, application programs, and to check if firmware upgrades are available (where appropriate).

3 Overview

The **PT-571** is a DGKat™ twisted pair transmitter for HDMI signals. The **PT-571** converts an HDMI signal to a single twisted pair signal and the **PT-572+** converts the twisted pair signal back to an HDMI signal.

The *HDMI Line Transmitter/Receiver* system features:

- Maximum data rate/bandwidth up to 1.65Gbps
- HDTV compatibility and HDCP compliance
- HDMI Support – HDMI (V.1.4 with Deep Color, x.v.Color™, HDMI Uncompressed Audio Channels, Dolby TrueHD, and DTS-HD)
- EDID PassThru that passes EDID signals between the source and display
- 3D pass-through
- System Range – Up to 90m (295ft) at 1080i, or up to 30m (98ft) at 1080p on shielded **BC-DGKat524** cable; 90m (295ft) at 1080i, or up to 70m (230ft) at 1080p on shielded **BC-DGKat623** cable; 100m (330ft) at 1080i or up to 90m (295ft) at 1080p on shielded **BC-DGKat7a23** cable
Note that the transmission range depends on the signal resolution, graphics card and display used. The distance using non-Kramer CAT 5, CAT 6 and CAT 7a cables may not reach these ranges
- DGKat™ Signal Integration – Kramer's unique technology for converting TMDS as well as control and communication to signals that run over twisted pair cables
- Power Connect™ that feeds 12V DC over the CAT 5 cable from transmitter to receiver (see [Section 3.2](#))
- Ultra-Compact PicoTOOLS™ – 4 units can be rack mounted side-by-side in a 1U rack space with the optional **RK-4PT** rack adapter.



Use only shielded cable where both ends of the shield are soldered to ground to eliminate ESD interface.

3.1 Using Twisted Pair Cable

Kramer engineers have developed special twisted pair cables to best match our digital twisted pair products; the Kramer: **BC-DGKat524** (CAT 5 24 AWG), the Kramer: **BC-DGKat623** (CAT 6 23 AWG cable), and the Kramer: **BC-DGKat7a23** (CAT 7a 23 AWG cable). These specially built cables significantly outperform regular CAT 5/CAT 6/CAT 7a cables.

3.2 About the Power Connect™ Feature

The Power Connect™ feature here means that only one unit in a system, the transmitter or receiver, needs to be connected to a power source when the devices are within 90m (270ft) of each other. The Power Connect™ feature applies as long as the cable can carry power and the distance does not exceed 90m on standard CAT 5 cable. For longer distances, heavy gauge cable should be used (CAT 5 cable is still suitable for the video/audio transmission, but not for feeding the power at these distances).

3.3 About HDCP—General Description

The High-Bandwidth Digital Content Protection (HDCP) standard developed by Intel, protects digital video and audio signals transmitted over DVI or HDMI connections between two HDCP-enabled devices to eliminate the reproduction of copyrighted material. To protect copyright holders (such as movie studios) from having their programs copied and shared, the HDCP standard provides for the secure and encrypted transmission of digital signals.

3.4 About HDMI—General Description

High-Definition Multimedia Interface (HDMI) is an uncompressed all-digital audio/video interface, widely supported in the entertainment and home cinema industry. HDMI ensures an all-digital rendering of video without the losses associated with analog interfaces and their unnecessary digital-to-analog conversions. It delivers the maximum high-definition image and sound quality in use today. Note that Kramer Electronics Limited is an HDMI Adopter and an HDCP Licensee.

HDMI, the HDMI logo and High-Definition Multimedia Interface are trademarks or registered trademarks of HDMI licensing LLC.

In particular, HDMI:

- Provides a simple interface between any audio/video source, such as a set-top box, DVD player, or A/V receiver and video monitor, such as a digital flat LCD / plasma television (DTV), over a single lengthy cable
SIMPLICITY - With video and multi-channel audio combined into a single cable, the cost, complexity, and confusion of multiple cables currently used in A/V systems is reduced
LENGTHY CABLE - HDMI technology has been designed to use standard copper cable construction at up to 15m
- Supports standard, enhanced, high-definition video, and multi-channel digital audio on a single cable
MULTI-CHANNEL DIGITAL AUDIO - HDMI supports multiple audio formats, from standard stereo to multi-channel surround-sound. HDMI has the capacity to support Dolby 5.1 audio and high-resolution audio formats
- Transmits all ATSC HDTV standards and supports 8-channel digital audio, with bandwidth to spare to accommodate future enhancements and requirements
- Benefits consumers by providing superior, uncompressed digital video quality via a single cable, and user-friendly connector
HDMI provides the quality and functionality of a digital interface while also supporting uncompressed video formats in a simple, cost-effective manner
- Is backward-compatible with DVI (Digital Visual Interface)
- Supports two-way communication between the video source (such as a DVD player) and the digital television, enabling new functionality such as automatic configuration and one-button play
- Has the capacity to support existing high-definition video formats (720p, 1080i, and 1080p), standard definition formats such as NTSC or PAL, as well as 480p and 576p

4 Defining the PT-571 HDMI Line Transmitter

The Kramer PicoTOOLS **PT-571** HDMI Line Transmitter receives an HDMI signal, encodes it, and transmits it over a CAT 5 cable to the **PT-572+**.

The **PT-571** has:

- An HDMI input connector
- An RJ-45 CAT 5 output connector
- One power/status LED

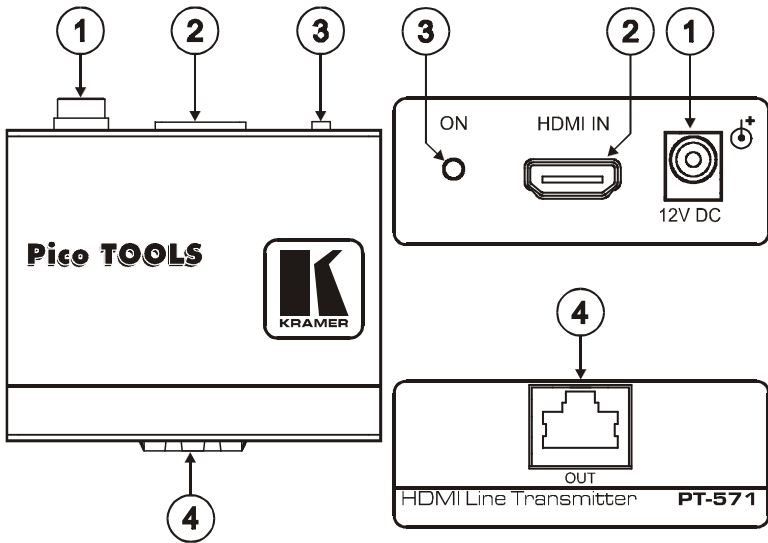


Figure 1: PT-571 HDMI Line Transmitter

#	Feature	Function
1	12V DC	+12V DC connector for powering the unit
2	HDMI IN Connector	Connect to the HDMI source
3	ON LED	Lights to indicate the following: Red—only the power is connected Orange—either the input or the output is connected Green—both the input and the output are connected If no input is connected the unit invokes the power save mode automatically turning off the power
4	OUT RJ-45 Connector	Connect to the IN RJ-45 connector on the PT-572+

5 Defining the PT-572+ HDMI Line Receiver

The Kramer Pico TOOLS **PT-572+** HDMI Line Receiver receives an encoded signal over a CAT 5 cable transmitted from the **PT-571**, decodes it, and converts it to an HDMI output.

The **PT-572+** has:

- An HDMI output connector
- An RJ-45 CAT 5 input connector
- One power/status LED

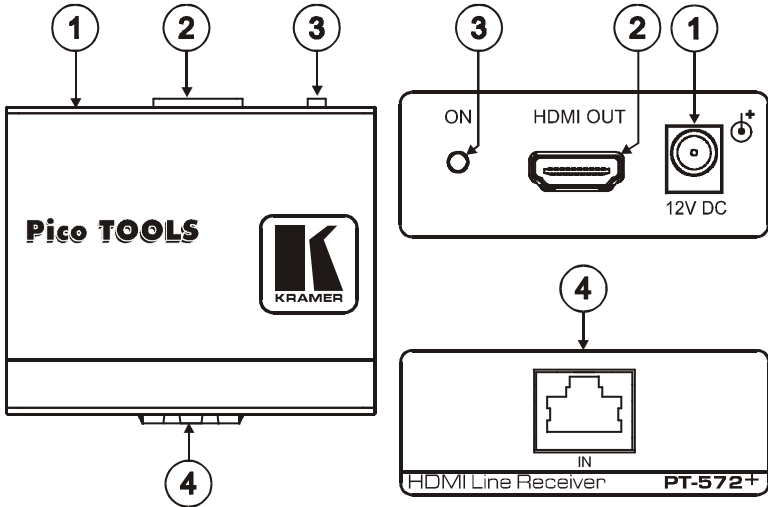


Figure 2: PT-572+ HDMI Line Receiver

#	Feature	Function
1	12V DC	+12V DC connector for powering the unit
2	HDMI OUT Connector	Connect to the HDMI acceptor
3	ON LED	Lights to indicate the following: Red—only the power is connected Orange—either the input or the output is connected Green—both the input and the output are connected
4	IN RJ-45 Connector	Connect to the OUT RJ-45 connector on the PT-571

6 Connecting the PT-571 and PT-572+ Transmitter Receiver Pair



Always switch off the power to each device before connecting it to your **PT-571/PT-572+**. After connecting your **PT-571/PT-572+**, connect the power and then switch on the power to each device.

You can use the **PT-571 HDMI Line Transmitter** with the **PT-572+ HDMI Line Receiver** to configure an HDMI transmitter/receiver system.

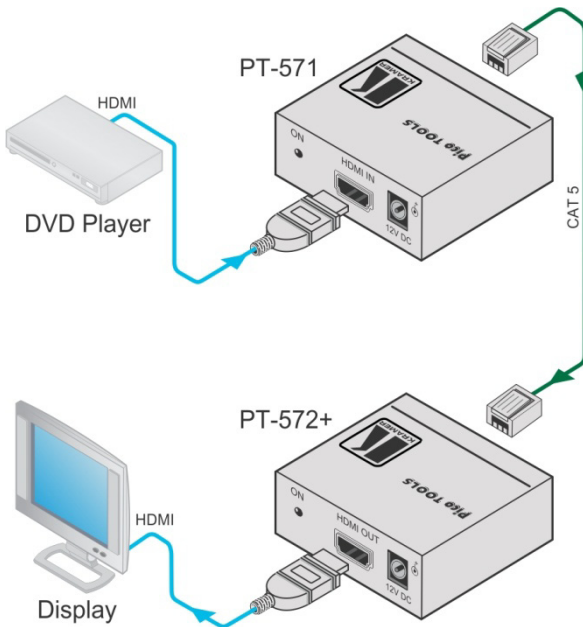


Figure 3: Connecting the PT-571/PT-572+ Transmitter/Receiver Pair

To connect the **PT-571** to the **PT-572+**, as illustrated in the example in [Figure 3](#), do the following:

1. Connect the CAT 5 OUT RJ-45 connector on the **PT-571** to the CAT 5 IN RJ-45 connector on the **PT-572+** via a CAT 5 cable (see [Section 6.1](#)).
2. On the **PT-571**, connect an HDMI source (for example, a DVD player) to the HDMI IN connector.

3. On the **PT-572+**, connect the HDMI OUT connector to an HDMI acceptor (for example, a plasma display).
4. Connect the 12V DC power adapter to the power socket on the **PT-571** and/or the **PT-572+** and connect the adapter to the mains electricity (not shown in [Figure 3](#)).

Note: When connecting the **PT-572+** to the **VP-81SID** do not connect the 12V power supply to the **PT-572+**.

6.1 Wiring the TP Line In/Line Out RJ-45 Connectors

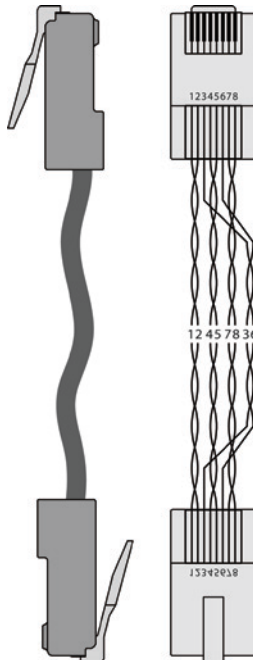
This section defines the TP pinout, using a straight pin-to-pin cable with RJ-45 connectors.



Note, that the cable Ground shielding must be connected / soldered to the connector shield.

EIA /TIA 568B	
PIN	Wire Color
1	Orange / White
2	Orange
3	Green / White
4	Blue
5	Blue / White
6	Green
7	Brown / White
8	Brown
Pair 1	4 and 5
Pair 2	1 and 2
Pair 3	3 and 6
Pair 4	7 and 8

Figure 4: TP Pinout Wiring



7 Technical Specifications

	PT-571	PT-572+
INPUTS:	1 HDMI connector	1 RJ-45 connector
OUTPUTS:	1 RJ-45 connector	1 HDMI connector
BANDWIDTH:	Supports up to 1.65Gbps bandwidth per graphic channel	
COMPLIANCE WITH HDMI STANDARD:	Supports HDMI and HDCP	
OPERATING TEMPERATURE:	0° to +55°C (32° to 131°F)	
STORAGE TEMPERATURE:	-45° to +72°C (-49° to 162°F)	
HUMIDITY:	10% to 90%, RHL non-condensing	
POWER CONSUMPTION:	12V DC, 250mA	12V DC, 250mA
DIMENSIONS:	6.2cm x 5.2cm x 2.4cm (2.4" x 2.1" x 1") W, D, H	
WEIGHT:	0.14kg (0.3lbs)	
ACCESSORIES:	Power supply	
OPTIONS:	Kramer BC-DGKat524 (CAT 5 24 AWG), BC-DGKat623 (CAT 6 23 AWG) and BC DGKat7a23 (CAT 7a 23 AWG) cables, 19" RK-4PT rack adapter	
Specifications are subject to change without notice Go to our Web site at http://www.kramerelectronics.com to access the list of resolutions		

LIMITED WARRANTY

The warranty obligations of Kramer Electronics for this product are limited to the terms set forth below:

What is Covered

This limited warranty covers defects in materials and workmanship in this product.

What is Not Covered

This limited warranty does not cover any damage, deterioration or malfunction resulting from any alteration, modification, improper or unreasonable use or maintenance, misuse, abuse, accident, neglect, exposure to excess moisture, fire, improper packing and shipping (such claims must be presented to the carrier), lightning, power surges, or other acts of nature. This limited warranty does not cover any damage, deterioration or malfunction resulting from the installation or removal of this product from any installation, any unauthorized tampering with this product, any repairs attempted by anyone unauthorized by Kramer Electronics to make such repairs, or any other cause which does not relate directly to a defect in materials and/or workmanship of this product. This limited warranty does not cover cartons, equipment enclosures, cables or accessories used in conjunction with this product.

Without limiting any other exclusion herein, Kramer Electronics does not warrant that the product covered hereby, including, without limitation, the technology and/or integrated circuit(s) included in the product, will not become obsolete or that such items are or will remain compatible with any other product or technology with which the product may be used.

How Long Does this Coverage Last

Seven years as of this printing; please check our Web site for the most current and accurate warranty information.

Who is Covered

Only the original purchaser of this product is covered under this limited warranty. This limited warranty is not transferable to subsequent purchasers or owners of this product.

What Kramer Electronics will do

Kramer Electronics will, at its sole option, provide one of the following three remedies to whatever extent it shall deem necessary to satisfy a proper claim under this limited warranty:

1. Elect to repair or facilitate the repair of any defective parts within a reasonable period of time, free of any charge for the necessary parts and labor to complete the repair and restore this product to its proper operating condition. Kramer Electronics will also pay the shipping costs necessary to return this product once the repair is complete.
2. Replace this product with a direct replacement or with a similar product deemed by Kramer Electronics to perform substantially the same function as the original product.
3. Issue a refund of the original purchase price less depreciation to be determined based on the age of the product at the time remedy is sought under this limited warranty.

What Kramer Electronics will not do Under This Limited Warranty

If this product is returned to Kramer Electronics or the authorized dealer from which it was purchased or any other party authorized to repair Kramer Electronics products, this product must be insured during shipment, with the insurance and shipping charges prepaid by you. If this product is returned uninsured, you assume all risks of loss or damage during shipment. Kramer Electronics will not be responsible for any costs related to the removal or re-installation of this product from or into any installation. Kramer Electronics will not be responsible for any costs related to any setting up this product, any adjustment of user controls or any programming required for a specific installation of this product.

How to Obtain a Remedy under this Limited Warranty

To obtain a remedy under this limited warranty, you must contact either the authorized Kramer Electronics reseller from whom you purchased this product or the Kramer Electronics office nearest you. For a list of authorized Kramer Electronics resellers and/or Kramer Electronics authorized service providers, please visit our web site at www.kramerelectronics.com or contact the Kramer Electronics office nearest you.

In order to pursue any remedy under this limited warranty, you must possess an original, dated receipt as proof of purchase from an authorized Kramer Electronics reseller. If this product is returned under this limited warranty, a return authorization number, obtained from Kramer Electronics, will be required. You may also be directed to an authorized reseller or a person authorized by Kramer Electronics to repair the product.

If it is decided that this product should be returned directly to Kramer Electronics, this product should be properly packed, preferably in the original carton, for shipping. Cartons not bearing a return authorization number will be refused.

Limitation on Liability

THE MAXIMUM LIABILITY OF KRAMER ELECTRONICS UNDER THIS LIMITED WARRANTY SHALL NOT EXCEED THE ACTUAL PURCHASE PRICE PAID FOR THE PRODUCT. TO THE MAXIMUM EXTENT PERMITTED BY LAW, KRAMER ELECTRONICS IS NOT RESPONSIBLE FOR DIRECT, SPECIAL, INCIDENTAL OR CONSEQUENTIAL DAMAGES RESULTING FROM ANY BREACH OF WARRANTY OR CONDITION, OR UNDER ANY OTHER LEGAL THEORY. Some countries, districts or states do not allow the exclusion or limitation of relief, special, incidental, consequential or indirect damages, or the limitation of liability to specified amounts, so the above limitations or exclusions may not apply to you.

Exclusive Remedy

TO THE MAXIMUM EXTENT PERMITTED BY LAW, THIS LIMITED WARRANTY AND THE REMEDIES SET FORTH ABOVE ARE EXCLUSIVE AND IN LIEU OF ALL OTHER WARRANTIES, REMEDIES AND CONDITIONS, WHETHER ORAL OR WRITTEN, EXPRESS OR IMPLIED. TO THE MAXIMUM EXTENT PERMITTED BY LAW, KRAMER ELECTRONICS SPECIFICALLY DISCLAIMS ANY AND ALL IMPLIED WARRANTIES, INCLUDING, WITHOUT LIMITATION, WARRANTIES OF MERCHANTABILITY AND FITNESS FOR A PARTICULAR PURPOSE. IF KRAMER ELECTRONICS CANNOT LAWFULLY DISCLAIM OR EXCLUDE IMPLIED WARRANTIES UNDER APPLICABLE LAW, THEN ALL IMPLIED WARRANTIES COVERING THIS PRODUCT, INCLUDING WARRANTIES OF MERCHANTABILITY AND FITNESS FOR A PARTICULAR PURPOSE, SHALL APPLY TO THIS PRODUCT AS PROVIDED UNDER APPLICABLE LAW.

IF ANY PRODUCT TO WHICH THIS LIMITED WARRANTY APPLIES IS A "CONSUMER PRODUCT" UNDER THE MAGNUSON-MOSS WARRANTY ACT (15 U.S.C.A. §2301, ET SEQ.) OR OTHER APPLICABLE LAW, THE FOREGOING DISCLAIMER OF IMPLIED WARRANTIES SHALL NOT APPLY TO YOU, AND ALL IMPLIED WARRANTIES ON THIS PRODUCT, INCLUDING WARRANTIES OF MERCHANTABILITY AND FITNESS FOR THE PARTICULAR PURPOSE, SHALL APPLY AS PROVIDED UNDER APPLICABLE LAW.

Other Conditions

This limited warranty gives you specific legal rights, and you may have other rights which vary from country to country or state to state.

This limited warranty is void if (i) the label bearing the serial number of this product has been removed or defaced, (ii) the product is not distributed by Kramer Electronics or (iii) this product is not purchased from an authorized Kramer Electronics reseller. If you are unsure whether a reseller is an authorized Kramer Electronics reseller, please visit our Web site at www.kramerelectronics.com or contact a Kramer Electronics office from the list at the end of this document.

Your rights under this limited warranty are not diminished if you do not complete and return the product registration form or complete and submit the online product registration form. Kramer Electronics thanks you for purchasing a Kramer Electronics product. We hope it will give you years of satisfaction.



For the latest information on our products and a list of Kramer distributors, visit our Web site where updates to this user manual may be found.

We welcome your questions, comments, and feedback.

Web site: www.kramerelectronics.com

E-mail: info@kramerel.com



SAFETY WARNING

Disconnect the unit from the power supply before opening and servicing



P/N: 2900-000690



Rev: 7