



User's Manual



i7
Active Noise CANCELLING

Thank you for your NoiseHush i7 purchase.

The NoiseHush i7 blends comfort, performance and advanced technology to counteract background noise while distinctly enhancing audio quality; for a quieter traveling experience or simply to enjoy a moment of serenity in your living room.

These sleekly designed, active noise-cancellation headphones use full-spectrum circuitry to create a sound wave that effectively reduces ambient noise, allowing you to listen to music comfortably or making crystal clear phone calls without distractions. A design so advanced, it even suppresses noise in passive mode!

Each earpiece features a potent 40mm neodymium driver that produces rich, deep, high-quality sound. The i7 headset features supple genuine leather around-the-ear cups and a comfortable memory foam fit with a sound insulation layer, which you are sure to appreciate as you immerse yourself in music.

Experience Near Absolute Silence!

Please take a moment to read this manual thoroughly, and keep it for future reference. The user manual explains the features and functions of your NoiseHush i7 to help ensure an optimal user experience.

To learn more about the i7, or other NoiseHush products, please visit noisehush.com

Specifications:

- Frequency: 30Hz-20kHz
- Speaker Type: 40mm Neodymium
- Cone Impedance: 32ohm
- Power Output: 100mW
- Noise Reduction: 20dB max
- Sensitivity: 98±3dB
- Frequency: 30Hz-20kHz
- Audio Connection: Gold Plated
- Cable Length: Detachable 5.9 feet
- Weight: 175g
- Battery Life: Up to 120hrs

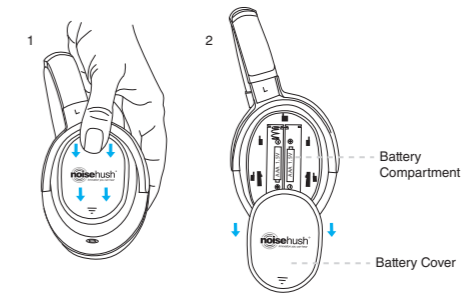
Package Contents:

- Headphones
- Cable w/ In-line Microphone
- 1/4" Stereo Plug Adapter
- Airline Dual-plug Adapter
- Hard shell Case

Operating your NoiseHush i7:

Inserting Batteries:

- For active noise cancelling you need two AAA alkaline batteries.
- Remove the left ear battery cover by sliding downwards and insert the batteries as indicated in the battery compartment.



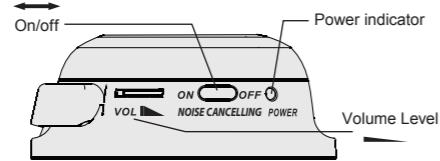
Adjusting the headband:

- In order to achieve maximum comfort and noise cancellation, the headband should be adjusted to properly fit your head and the ear cups sit comfortably over your ears.

Connecting the headphones:

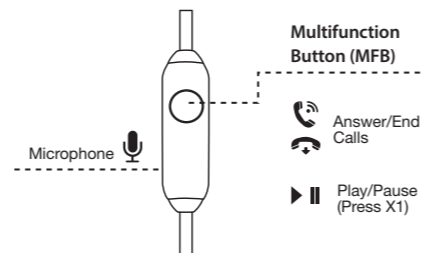
- Connect the headphones via the supplied audio cable to the sound source. For optimum call quality, insert cable with microphone closest to the headphones. When necessary, use the 1/4" jack adapter for home audio or the airplane dual plug adapter for the in-flight entertainment.

Operation:



- Adjust the volume at the headphones.
- To power on the noise cancelling function, set the ON/OFF switch to ON. The POWER indicator will light up.
Note: After you turn ON the power, you may hear a slight hissing noise. This is a normal function and will cease after a few seconds.
- When the batteries are running low, the LED power indicator will start flashing.
- Once the battery is fully drained, the active noise cancelling feature will turn off, but the audio signal from the music player will continue to transmit.
- In quiet environments where the noise cancelling is not required, the i7 can also be used like conventional headphones, without the use of batteries.
- When not in use, switch off the POWER to extend battery life.

In-line Microphone & Multifunction Button



Call-related Functions:

Answer a call	Press MFB once to answer
End a call	Press MFB again to end
Ignore a call	Hold MFB for 3 seconds
Switch to an incoming call and put current call on hold	Press MFB once to answer second call. Press MFB again to switch back to first call.
Switch to an incoming call and end the current call	Hold MFB for 3 seconds
Swap calls	Press MFB once

Music-related Functions*:

Play or Pause song	Press MFB once
--------------------	----------------

* May not be available for some devices. See your user manual for specific functionality/features available.

Cleaning:

The headphones should be cleaned from time to time. Please use a soft lint-free and moistened cloth. Never use alcohol or solvents.

Transport:

Fold the ear cups inwards and place it into the carrying case. You can store the accessories in the lid of the case.

Safety instructions:

- Always turn down the volume control before plugging the headphones into a sound source.
- Do not use these headphones where vehicular traffic is present, or in any other activity where a failure to hear surrounding sounds could be dangerous.
- Maintenance and service operations are only to be carried out by authorized dealers. Damage, caused by manual modifications of the product is not subject to warranty.
- If this product is used for other purposes than originally intended, the product may suffer damage and will void the warranty.
- Long-term exposure to loud music may cause hearing damage. It is best to avoid extreme volume when using these headphones, especially for extended periods.
- Keep batteries out of reach of children.

Warranty Information:

NoiseHush warrants this product against defects in material and/or workmanship under normal use for a period of ONE (1) YEAR from the date of purchase by the original purchaser.

To view our warranty policy or to submit a claim, please visit www.noisehush.com.



www.noisehush.com