



Oben™

PD-117

3-Way Pan/Tilt Head



You're on steady ground™

Thank You for choosing Oben!

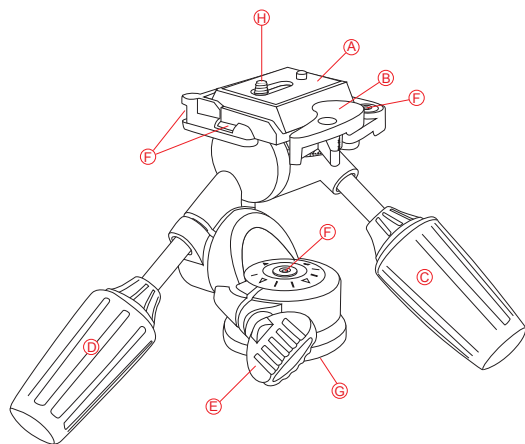
This sturdy Oben PD-117 3-Way Pan and Tilt Head offers precise, smooth operation, with independent control of each of the three axes.

The PD-117 has a durable and handsome low-reflectance powder-coated finish and ergonomic rubber handle grips for tilt-and-pan operation. Integrated bubble levels along each of the three axes ensure accurate, precise placement of the camera.

Please read this entire manual before using the PD-117 3-Way Pan and Tilt Head.

Note: Images are for illustrative purposes only. Actual product may vary.

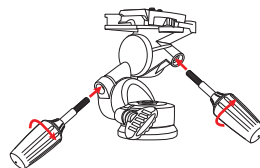
Key Features	4
Attach Handles to Head	5
Mount Head to Tripod	5
Dual Locking Quick-Release	5
Mount Quick-Release Plate	6
Mount Camera to Head	6
Operation	6
Pan Locking Knob	6
Vertical Tilt Handle	7
Pan and Tilt Handle	7
Warnings	7



- A Quick-Release Plate**
- B Dual-Locking Quick Release**
- C Vertical Tilt Handle**
- D Pan and Tilt Handle**
- E Pan Locking Knob**
- F Bubble Levels**
- G 3/8\"-16 Tripod Mounting Thread**
- H 1/4\" Camera Mounting Screw**

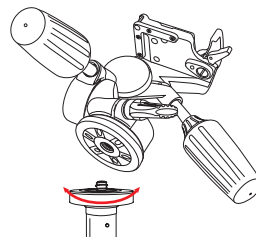
1. Attach Handles to Head

You must attach the control handles to the head before using it. There are two handles, as well as a Pan Locking Knob (which is pre-installed). The two handles to be installed are identical and either handle can be installed in either handle position on the head.



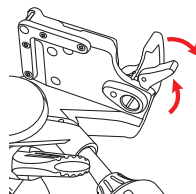
2. Mount Head to Tripod

To mount the head on a tripod, first tighten the pan locking knob on the head. Then, being careful to properly align the tripod stud with the head's mounting hole to avoid damaging them, rotate the head clockwise onto the tripod and hand-tighten.



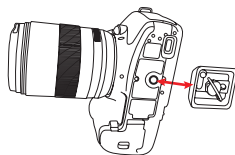
3. Dual-Locking Quick-Release

The PD-117 is designed with a dual-locking quick-release latch to keep the camera securely in place on the head. To unlock the quick-release, press the small latch while pulling outward on the main latch at the same time.



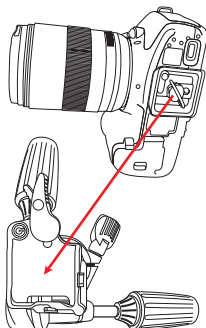
4. Mount Quick-Release Plate

Mount the quick-release plate to the threaded hole on the base of your camera. The plate utilizes a 1/4"-20 screw that will fit most cameras. Align the mounting screw with the mounting socket on your camera and tighten the screw securely. After tightening the screw, fold the thumbscrew flat against the bottom of the quick-release plate.



5. Mount Camera to Head

After mounting the quick-release plate to your camera, ensure that the handles and knob on the head are securely tightened. To mount the camera to the head, first insert the side of the Quick-Release Plate that is opposite the quick-release latch. Then, press down on the side of the quick-release plate nearest the quick-release latch. The quick-release latch will automatically lock into place when the plate is pushed into the groove.

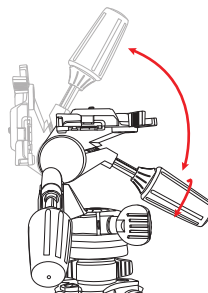
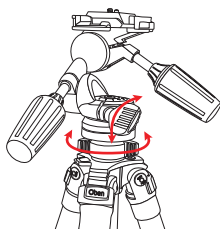


6. Operation

You should only loosen one locking handle at a time when adjusting your camera's position.

A. PAN LOCKING KNOB

The pan locking knob locks and unlocks the head, which allows you to rotate the head 360° horizontally.



Turn the knob counter-clockwise to unlock and clockwise to lock it. After positioning the head, make sure to securely tighten the knob.

C. VERTICAL TILT HANDLE

The vertical tilt handle allows you to move the position of the camera from horizontal to vertical, or anywhere in-between. Loosen the handle by turning it counterclockwise. Tighten it by turning it clockwise.

C. PAN AND TILT HANDLE

The pan and tilt handle allows you to tilt the camera up or down, or rotate it horizontally. Loosen the handle by turning it counterclockwise and tighten it by turning it clockwise. To rotate the camera horizontally using the pan and tilt handle, first loosen the pan locking knob.



Warnings:

- Do not exceed the head's maximum load capacity of 17.6 lb (8 kg).
- Ensure that all appropriate locks are engaged when necessary.
- Do not operate in saltwater. Dry head if it becomes wet.
- Remove the camera from the head during setup or transport.
- Avoid long-term exposure to sunlight.
- Keep out of reach of children.

Visit our website at ObenSupports.com for more Oben products.



www.obensupports.com