



Oben™

VH-R2 Tilt Head



You're on steady ground™

Thank You for choosing Oben!

This sturdy Oben VH-R2 Tilt Head provides smooth, accurate, and quick operation for a 180° vertical tilt. The quick-release latch features a locking pin to prevent accidental camera release.

Included with the Tilt Head is a snap-in quick-release plate for rapid mounting and dismounting of the camera, and a reducer bushing to ensure a proper fit to your monopod or tripod.

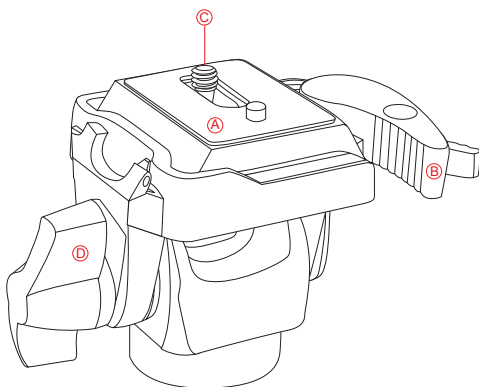
Note: When using monopods with a large diameter top plate, a full 180° tilt range may not be possible.

Please read this entire manual before using the VH-R2 Tilt Head.

Note: Images are for illustrative purposes only. Actual product may vary.

Key Features	4
Mount Tilt Head To Monopod	5
Converting Mounting Thread	5
Tilt Locking Knob	5
Dual-Locking Quick Release	6
Mount Quick-Release Plate	6
Mount Camera	6
Warnings	7

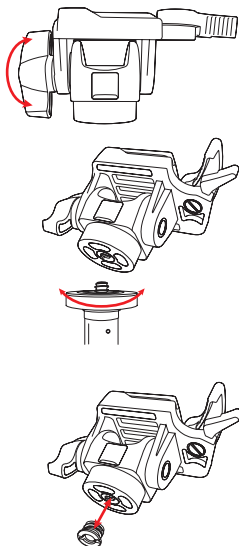
KEY FEATURES



- Ⓐ Quick-Release Plate
- Ⓑ Dual-Locking Quick Release
- Ⓒ 1/4"-20 UNC Mounting Screw
- Ⓓ Tilt Locking Knob

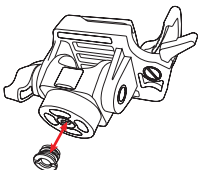
1. Mount Tilt Head To Monopod

To mount the head on a monopod, first tighten the tilt locking knob on the head. Then, being careful to properly align the monopod stud with the head's mounting hole to avoid damaging them, rotate the head clockwise onto the monopod and hand-tighten.



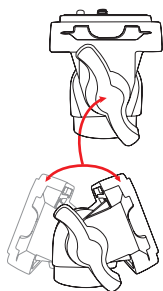
2. Converting Mounting Thread

For monopods with a 1/4" threaded mounting stud: insert the supplied reducer bushing into the threaded mounting hole of the head to enable a proper fit.



3. Tilt Locking Knob

The tilt locking knob locks and unlocks the head, which allows you to tilt the head 180 degrees vertically. Turn the knob counterclockwise to unlock the head, and clockwise to lock it. After positioning the head, make sure to firmly tighten the knob.

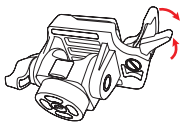


Warning: Always use one hand to secure the camera while adjusting the head, and ensure that the lock is engaged before letting go of the camera.

4. Dual-Locking Quick Release

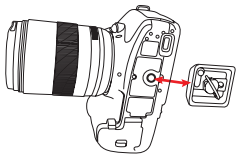
The VH-R2 Tilt Head is designed with a dual-locking quick-release latch to keep the camera securely in place on the head.

To unlock the quick-release, press the small latch while pulling outward on the main latch at the same time.



5. Mount Quick-Release Plate

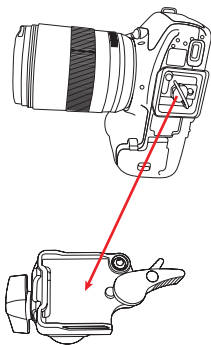
Mount the quick-release plate to the threaded hole on the base of your camera. The plate utilizes a 1/4"-20 screw that will fit most cameras. After tightening the screw, fold the thumbscrew flat against the bottom of the quick-release plate.



5. Mount Camera

After mounting the quick-release plate to your camera, ensure that the tilt locking knob on the VH-R2 head is securely tightened.

To mount the camera to the head, first insert the side of the quick-release plate that is opposite the quick-release latch. Then, press down on the side of the quick-release plate nearest the quick-release latch. The quick-release latch will automatically lock into place when the plate is pushed into the groove.



**Warnings:**

- *Do not exceed the head's maximum load capacity of 11 lb (5 kg).*
- *Ensure that all appropriate locks are engaged when necessary.*
- *The VH-R2 head should only be used in temperatures ranging between -4° and 158° F (-20° and 70°C).*
- *Do not operate in saltwater. Dry head if it becomes wet.*
- *Remove the camera from the head during setup or transport.*
- *Avoid long-term exposure to sunlight.*
- *Keep out of reach of children.*

Visit our website at **ObenSupports.com**
for more Oben products.



www.obensupports.com