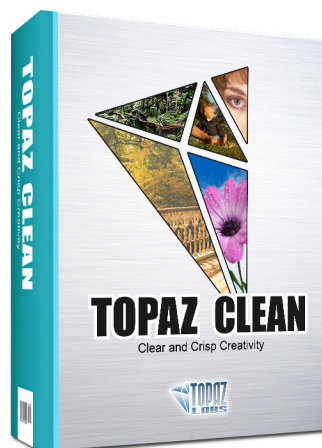




Topaz Clean V3

User Manual



The ultimate stylization tool that controls the depth and intensity of image textures, edges and details for artistic flattening, smoothing, contouring and line enhancement.



I. Installation

A. How to Install.....	3
B. Entering Your Key.....	3
C. Host-Specific Installation.....	3
1. Paint Shop Pro	4
2. Photo Impact.....	5
3. Irfanview.....	6
D. Uninstalling.....	7

II. Introduction

A. Topaz Clean.....	8
1. About Clean.....	8
2. Primary Functions.....	8
B. New Features.....	9

III. Work Area

A. Interface.....	10
B. Preview.....	14
C. Presets.....	16
1. Applying Presets.....	16
2. Adding Presets.....	16
3. Deleting Presets.....	17
4. Importing Presets.....	18
5. Exporting Presets.....	18
6. Sharing Presets.....	18
D. Tools.....	19
E. Menu.....	20
1. Preferences.....	20
2. Check for update.....	20
3. Enter Key.....	21
4. What's This?.....	21

5. User Guide.....	21
6. Tech Support.....	21
7. Product Info.....	21
8. Gallery.....	21
9. MyTopaz.....	21
10. Tutorials.....	21
11. About.....	21

IV. Settings & Parameters

A. Clean.....	22
1. Strength.....	22
2. Threshold.....	22
3. Radius.....	22
B. Edges.....	22
1. Accent.....	23
2. Radius.....	23
3. Sharpness.....	23
C. Texture.....	23
1. Strength.....	23
2. Boost.....	23
3. Size.....	23

VI. Work Flow

A. Sample Project #1.....	24
B. Sample Project #2.....	31

VII. Additional Resources

A. Glossary.....	39
B. FAQ's.....	41
C. Shortcut Keys.....	43
D. Connect.....	44
E. Company Info.....	45

Topaz Clean is a Photoshop plug-in, which means it won't run by itself and requires a compatible host program.

To Install

1. Close Photoshop or other image editing program if you are using it.
2. Open the Topaz Clean dmg or zip file, double-click on the Topaz Clean installer, and then follow the on-screen instructions.



Mac Dmg



Windows Zip

3. Your Topaz plug-ins will automatically be installed in your Photoshop plug-ins folder.
4. After the installation, you will need to enter your license or trial key.

Important for Mac Users:

After installation, Topaz Clean will be installed in the following folder: “ Macintosh HD -> Library -> Application Support -> Topaz Labs -> Clean 3”.

If your Photoshop is installed in a customized location, you will need to manually create a shortcut (alias) link inside folder “<Photoshop install folder> -> Plug-ins” that links to “ Macintosh HD -> Library -> Application Support -> Topaz Labs -> Clean 3 -> Plug-ins”.

Entering Your Key

Entering your trial key allows you to save your projects and print them during your evaluation period. Entering your license key allows you do the same, except without any time limitations.

1. Start by opening up an image in Photoshop.
2. Go to Filters -> Topaz Labs -> Clean 3 -> Menu -> Enter key.
3. You can then copy and paste or type your key in.

Important: To install the product on a second computer, you will need to download Topaz Clean and then enter your same license key.

Host-Specific Installation

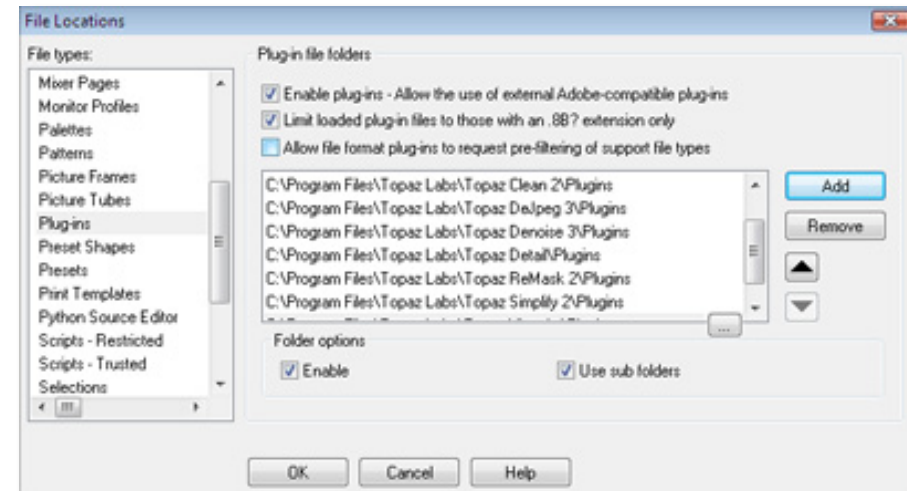
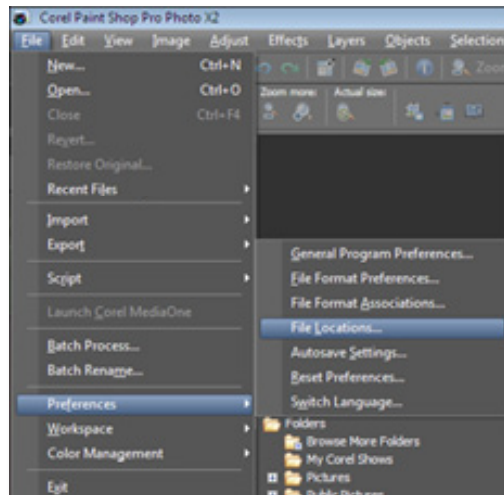
Topaz Clean is also compatible with Lightroom, Aperture and iPhoto. To use Clean in any of these programs you will need to download and install the free Topaz Fusion Express compatibility add on.

In Windows, Topaz Clean is supported by most host applications that support Photoshop plug-ins. This includes Paint Shop Pro, Photo Impact, Painter, and Irfanview, although there are additional host programs that may also support Topaz Clean.

To install Clean in either Paint Shop Pro, Photo Impact, or Irfanview first download Topaz Clean to the default location. Then, to configure it into each program, follow the host-specific instructions on the next page.

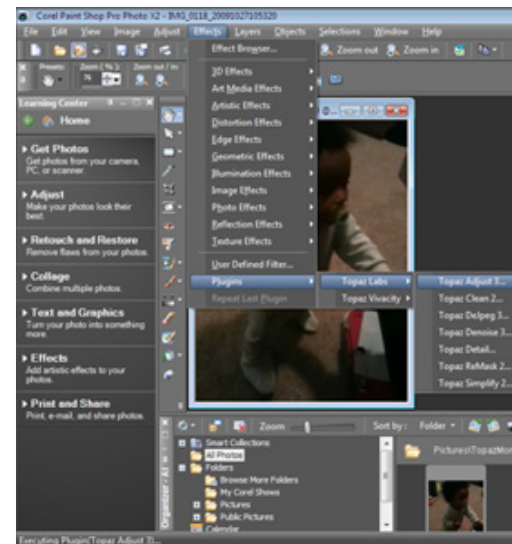
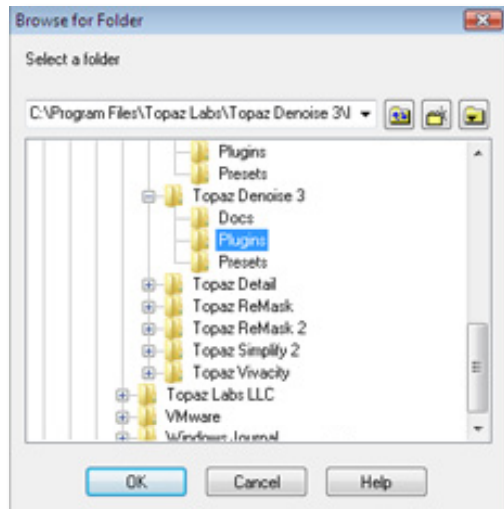
How to install Topaz Clean in Paintshop Pro

1. First launch Paint Shop Pro.
2. Go to Menu file -> Preferences -> File Locations. Select "Plug-ins" from the "File Types" list and click "Add".



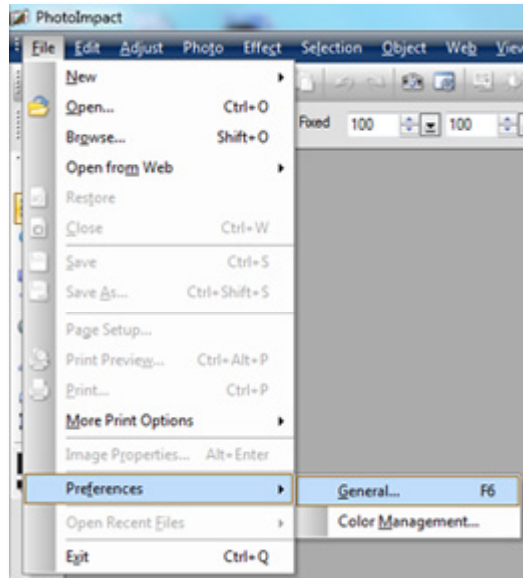
3. Choose C:\Program Files\Topaz Labs\Topaz Clean 3 plug-ins and click "OK".

4. Topaz Clean 3 is now available to use. Simply go to Effects -> Plug-ins and select "Topaz Clean 3".

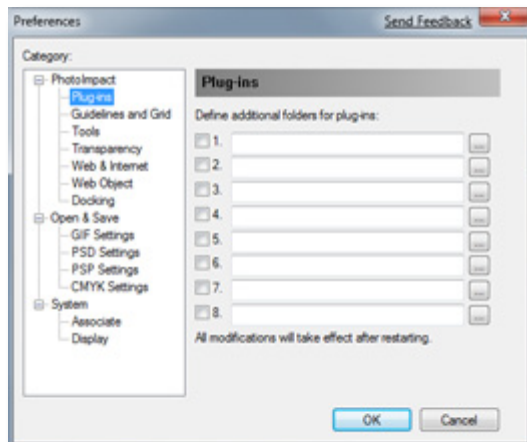


How to install Topaz Clean in Photo Impact

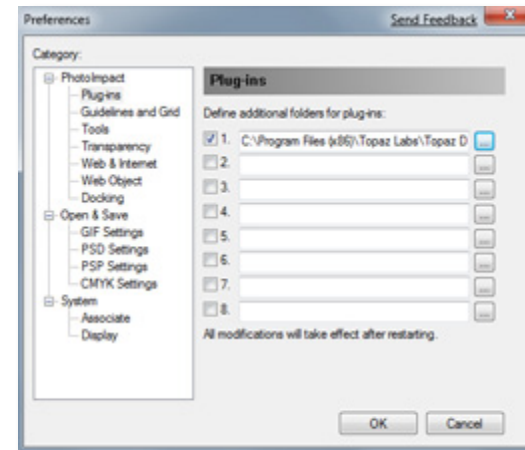
1. First launch Photo Impact.
2. Go to File -> Preferences -> General or use shortcut key F6.



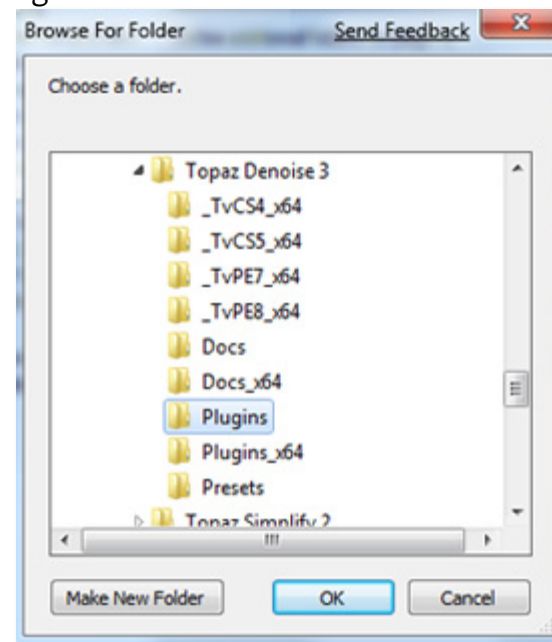
3. Select Plug-ins from the Categories list.



Then click on the ... button and browse to find the Clean 3 plug-in folder located in: C:\Program Files\Topaz Labs\Topaz Clean 3 plug-ins and then click "OK".



4. Restart Photo Impact. Go to Menu -> Effect to access plug-in.

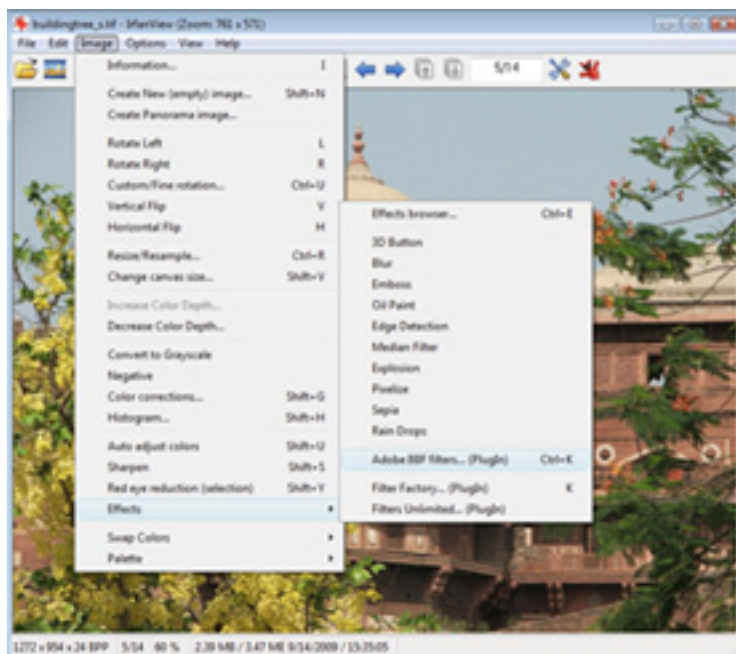


How to install Topaz Clean in Irfanview

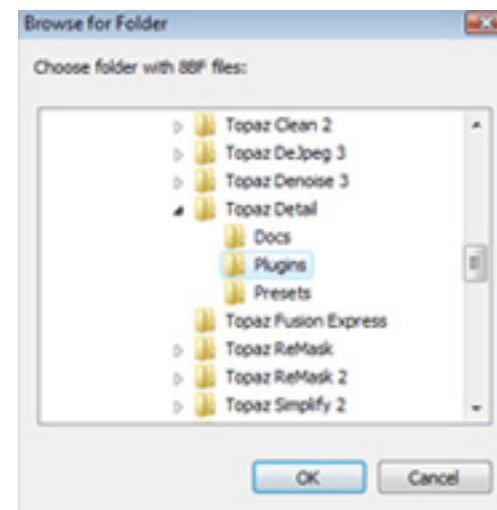
1. Make sure that you have downloaded and installed the 8bf plug-in add-on, available on the Irfanview webpage. (<http://www.software.com/irfanview-plugin>)



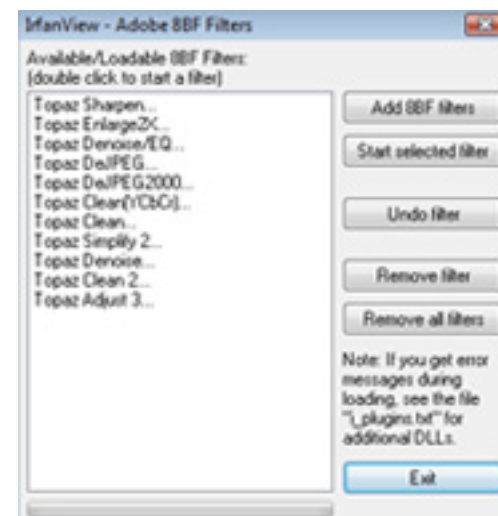
2. Open Irfanview and go to Image -> Effects -> Adobe 8BF filters.



3. In the screen that pops up, select "Add 8BF filters" and navigate to the C: \ Program Files \ Topaz Labs \ Topaz Clean 3 \ Plug-ins folder and click "OK". You will then see "Topaz Clean 3" in the Available / Loadable 8BF Filters section.



4. To use Topaz Clean 3 in the future, simply go to Image -> Effects> Adobe 8BF filters again and select "Topaz Clean 3".



To uninstall Topaz Clean follow these instructions:

Mac

1. Quit Photoshop (or other editing program).
2. Navigate to the Topaz Labs support files and frames located at: Macintosh HD -> Library -> Application Support -> Topaz Labs.
3. Locate the Topaz Clean file and move it to the trash. You will need to enter your system password to OK this change.
4. Navigate to your Photoshop plug-ins folder located at: Applications -> Photoshop -> Plug-ins
5. Locate any leftover Topaz Clean files and move it to the trash.

Windows XP*

1. Quit Photoshop (or other editing program).
2. Click on the Start Menu and select Control Panel.
3. Double-click on Add / Remove programs.
4. Select Topaz Clean and click remove.

Windows Vista*

1. Quit Photoshop (or other editing program).
2. Click on the Start Menu and select Control Panel.

3. Select Programs, then Uninstall a Program.

4. Select Topaz Clean and click remove.

Windows 7*

1. Quit Photoshop (or other editing program).
2. Click on the Start Menu and select Control Panel -> Programs -> Programs and Features.
3. Select Topaz Clean and click uninstall.

*Please note that if you also have the 64-bit version of Clean installed, then you will need to first uninstall this version before you can uninstall the regular version.



Before Topaz Clean



After Topaz Clean

Topaz Clean

About Topaz Clean

Topaz Clean is a texture adjustment program designed to help you achieve a variety of texture, smoothing, detail flattening and edge enhancement techniques.

With Topaz Clean you can achieve advanced smoothing and texture effects while increasing or decreasing the appearance of detail depth within your images. Clean preserves the contours and overall image integrity while optimally removing the less desired details.

One of the most popular uses for clean is portraiture. Clean only removes medium-sized discolorations and blotches while preserving major facial features and tiny but important skin detail. Use the included Skin Even preset to quickly touch up skin.

The Primary Functions of Topaz Clean Include:

1. Adjust depth and intensity of texture and details.
2. Enhancement of well-defined edges and lines.
3. Remove undesired details or defects.
4. Create over-sharpened and stylized effects.



Before Topaz Clean



After Topaz Clean

Visit the Clean Gallery to see Topaz Clean at work:
<http://gallery.topazlabs.com/keyword/clean>

New Clean Features

Topaz Clean 3 Features

1. **Auto Updater.** Get software updates instantly.
2. **New user interface.**
3. **Snap / Recall buttons.** Save up to 99 snapshot settings for comparison.
4. **Undo / Redo buttons.**
5. **Collapsible side panels.** Expand and collapse the preset panel and the tool panel for an adjustable workspace.
6. **Collapsible tabs.** Open and close the parameter tabs as you need them.
7. **Preset Enable / Disable option.** Option to enable or disable the preset preview processing at program startup.
8. **Presets Layout.** New preset format with single preset preview window.
9. **Preset Navigation.** Use the up / down arrow keys to navigate the preset list and display the selected preset thumbnail (in preset preview window). Use the return (Enter) key to apply the currently selected preset.
10. **Enable / Disable Tool Tips.** Option to enable or disable the pop up tool tips.
11. **Quick Slider Reset.** Double click on the slider name to reset default slider values.



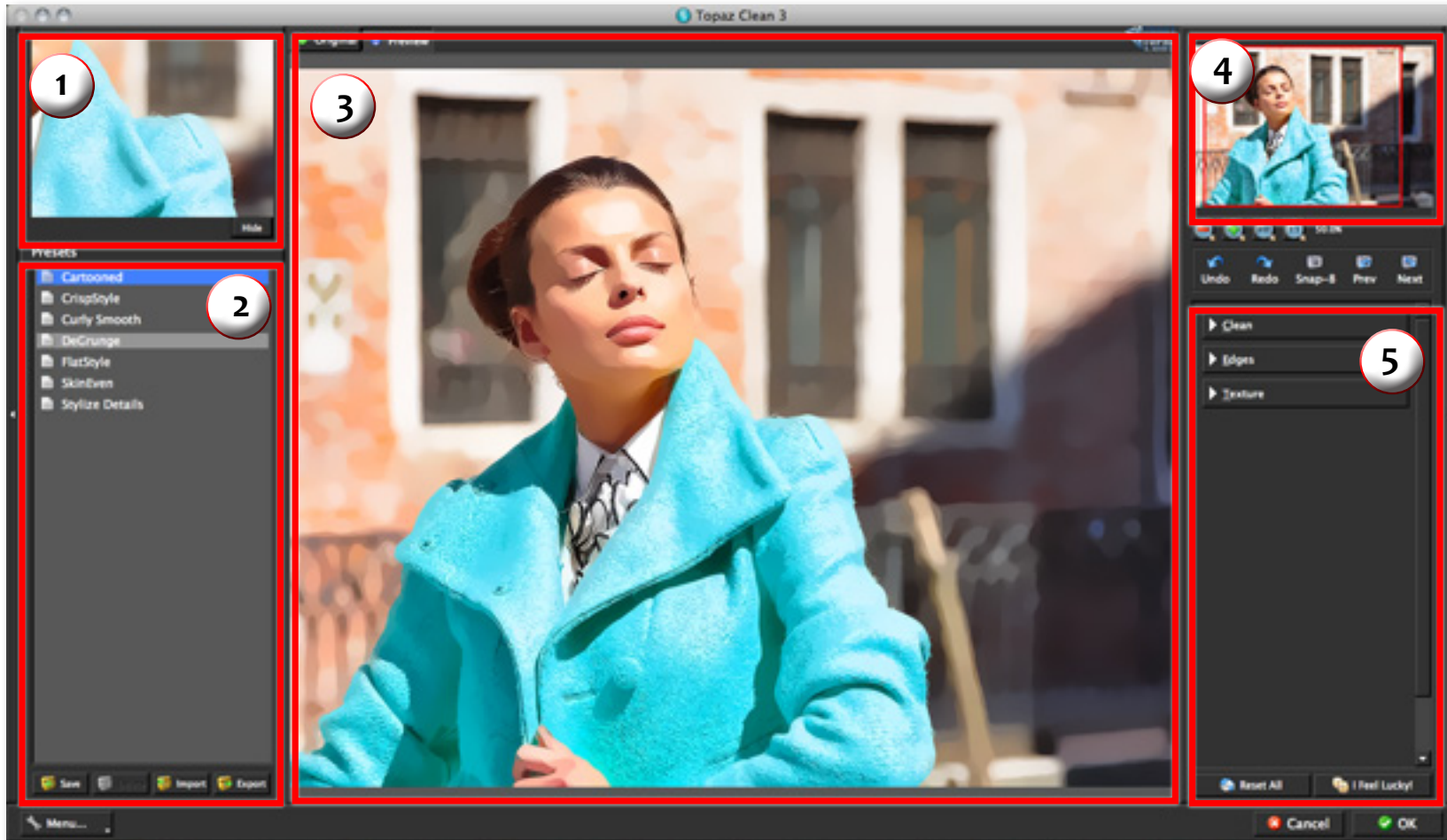
Before Topaz Clean



After Topaz Clean

Interface (Main View)

Although the Topaz Clean interface may look intimidating at first glance, don't worry: it's actually quite simple and easy to use. You'll soon be a pro after experimenting with it for a bit. In order to make sense of the function of each of the various controls, we have divided the interface into a few sections:



1. Presets Preview
The removable pre-view window displays preset previews.


2. Presets Panel
Provides "snapshots" of pre-defined effects.

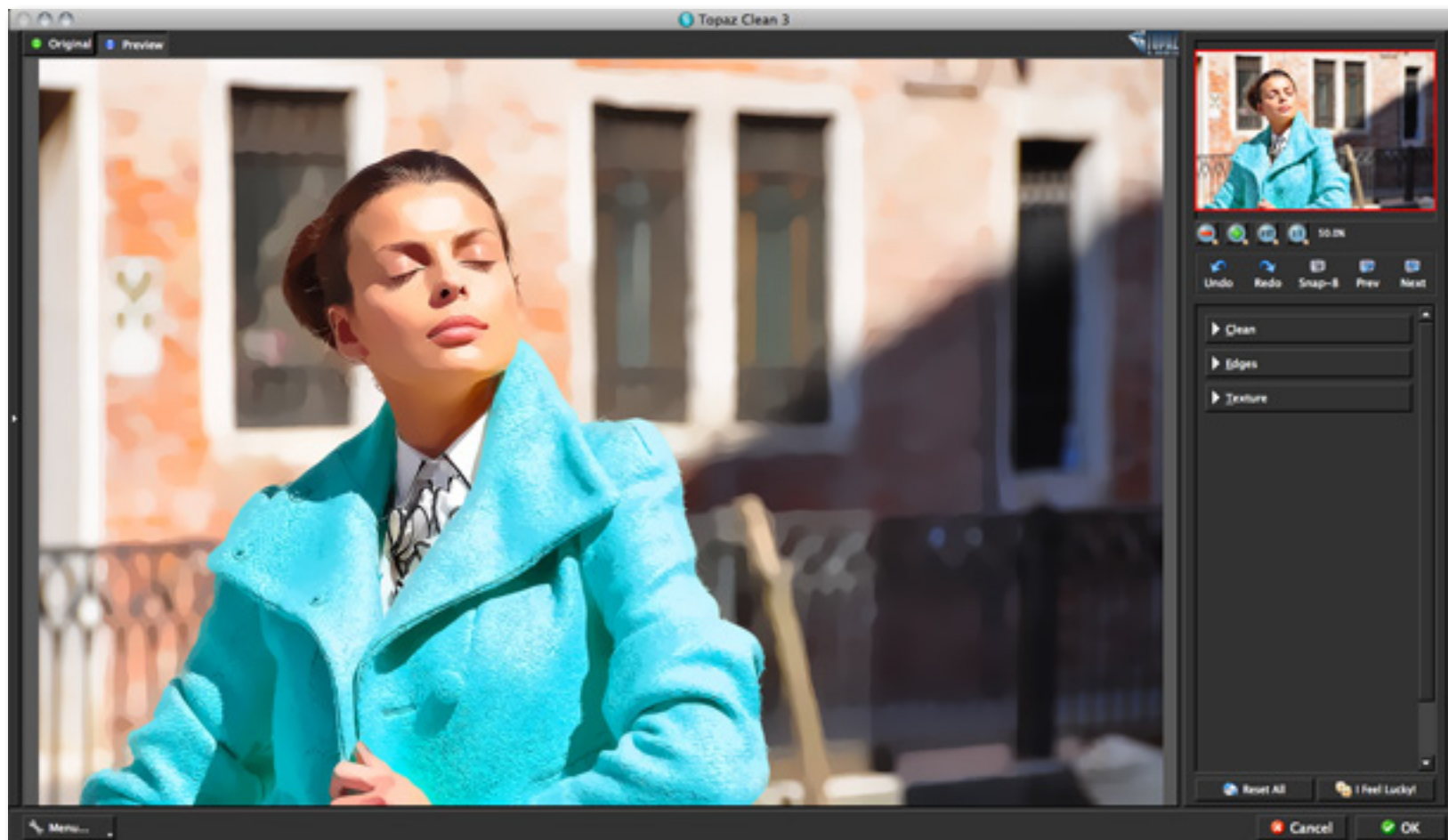
3. Preview Window
Displays the preview of the original and adjusted image.

4. Preview Navigator
Displays the region of the preview image you are currently focused on.

5. Settings & Parameters
Controls the editing using sliders to adjust the various effects.

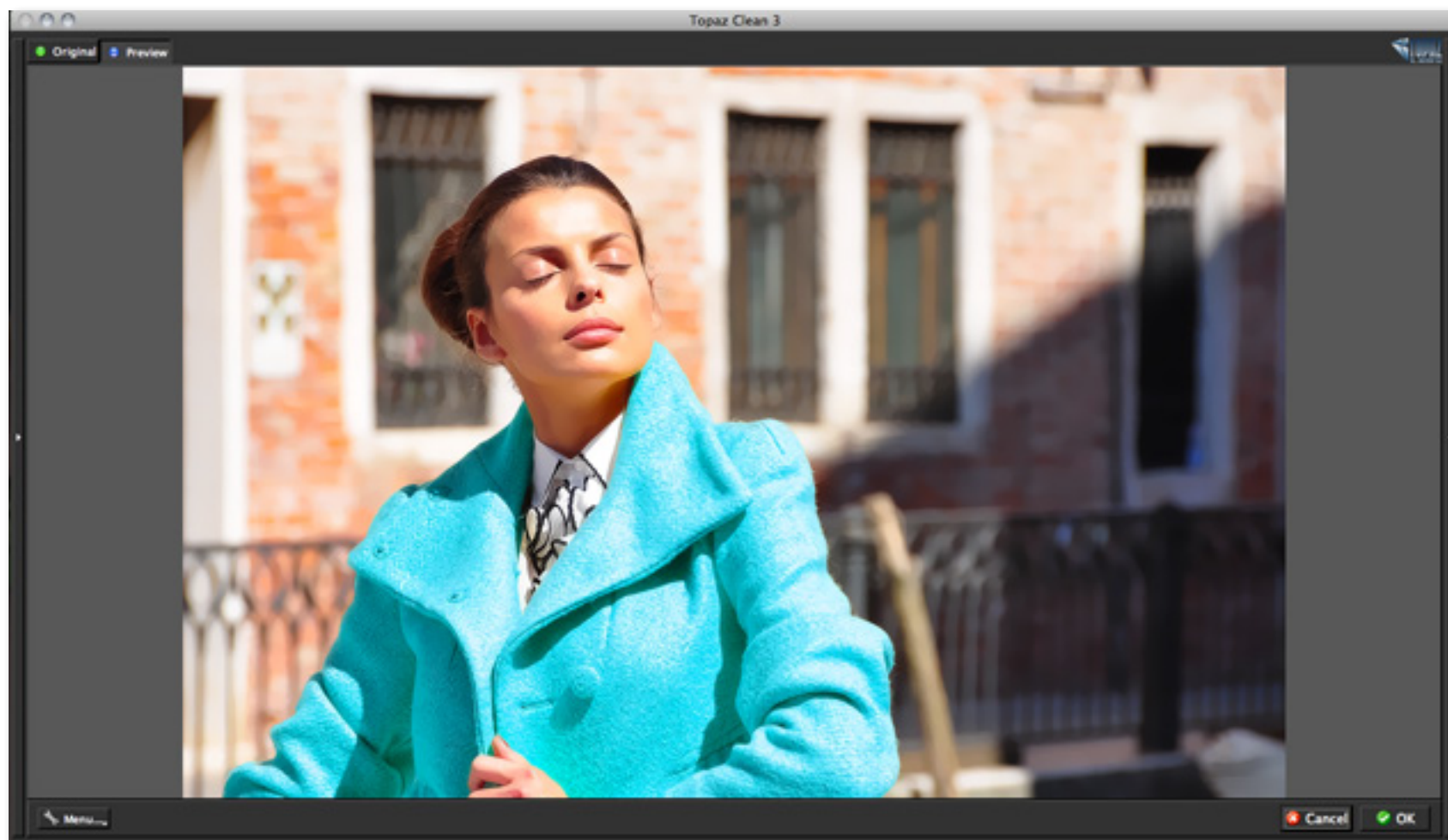
Interface (Tool Panel View)

Use the small white arrows to expand and collapse the preset panel. You can click the white arrow  or grab the edge of the panel and drag it in or out.



Interface (No Panel View)

Use the small white arrows to expand and collapse the preset and tool panels. You can click the white arrows or grab the edge of the panels and drag them in or out.

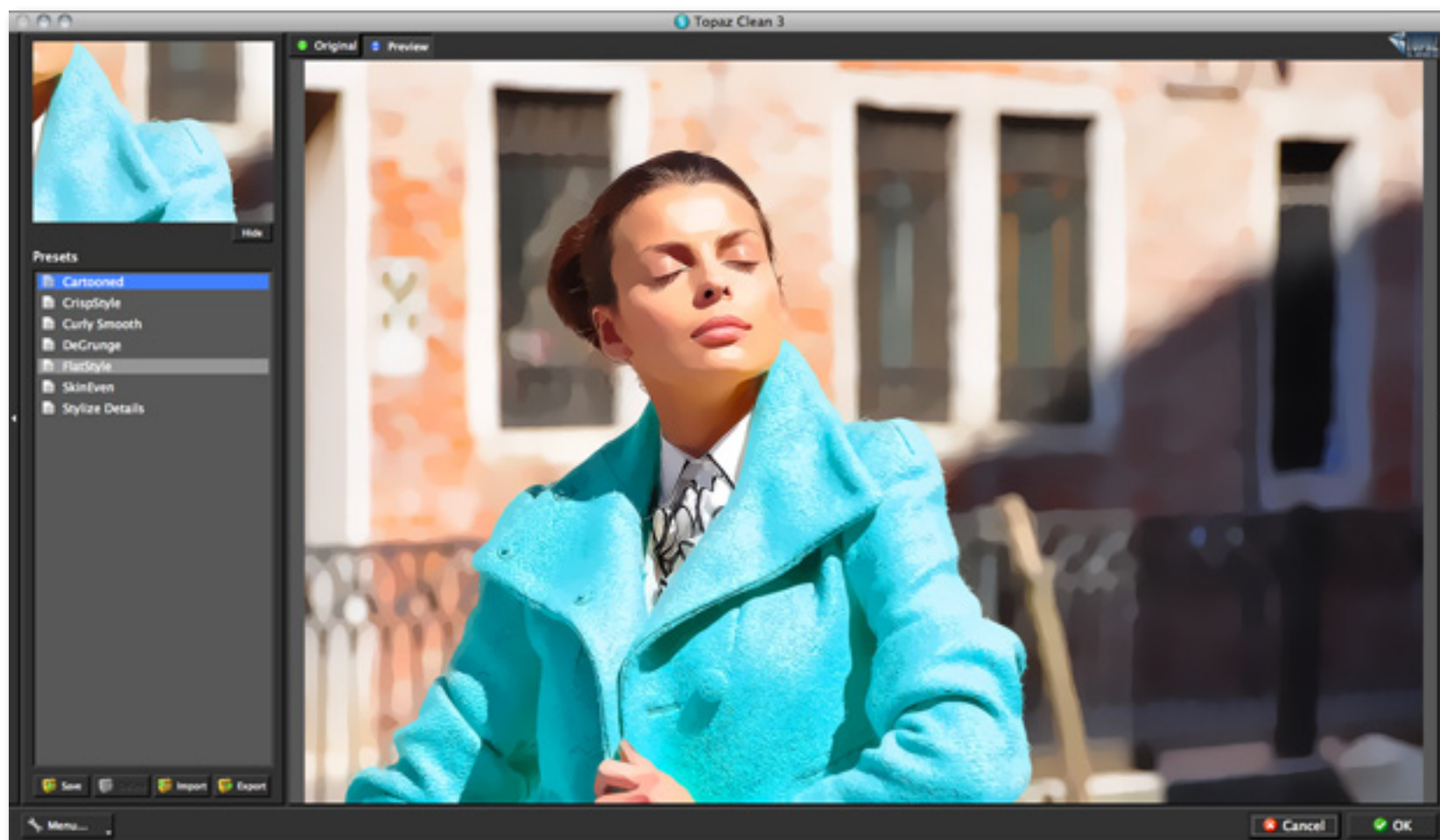


Interface (Preset Panel View)

Use the small white arrows to expand and collapse the tool panel. You can click the white arrow or grab the edge of the panel and drag it in or out.



or grab the

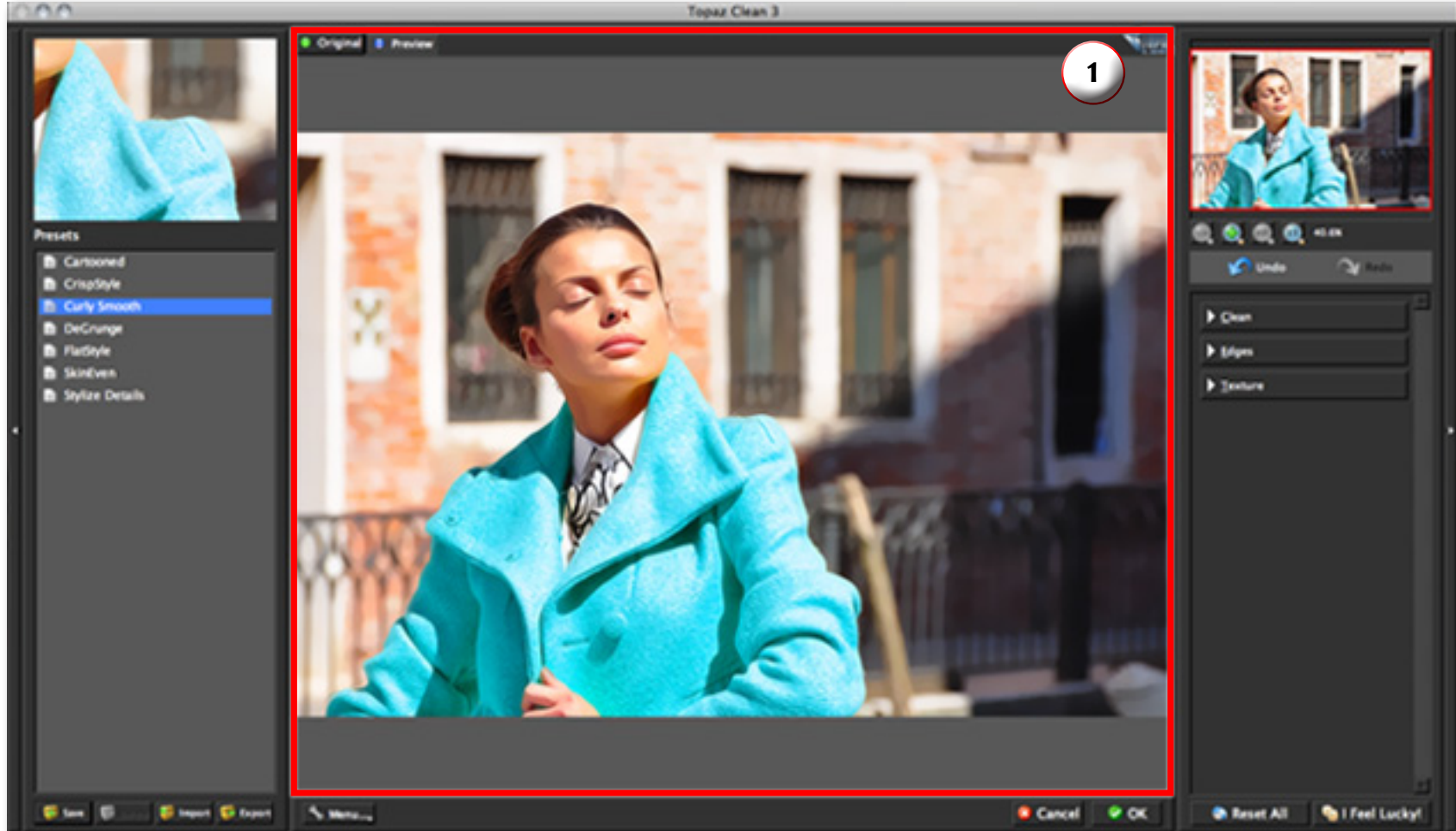


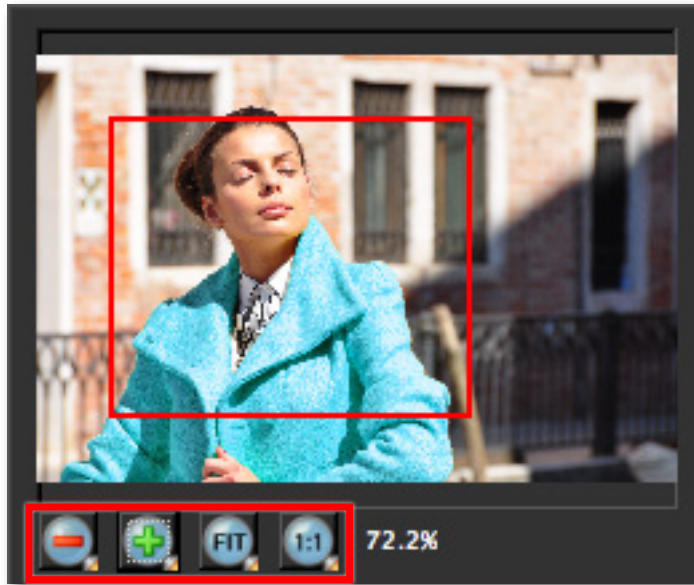
Preview Section

The Preview section is the main window that is centered in the Adjust interface. The preview section shows you the original image and the processed preview of the image. Click on the image in the preview window (or use the Original and Preview buttons) to switch between the Original and Preview tabs and compare the filtered and un-filtered images.

To pan the preview image, click and hold the left mouse button on the preview image and drag it around. When you let go of the mouse button, the new portion of the image will be processed and the result will be displayed.

You can also use SPACE bar or your numbered shortcut keys “1” and “2” to switch back and forth between your filtered and unfiltered image in the preview window.





You can zoom in or out of the preview image by clicking the “+”, or “-” buttons below the preview image. You can also resize the window as well by dragging the bottom right corner in and out.

The “Fit” button will fit the entire image into the preview window.

The “100%” button will zoom to 100% view.

If zoomed below 100% the preview image will be internally resized in order to speed up preview updating.



The “Ctrl +” and “Ctrl -” keys zoom in and out of the image, just like in Photoshop.

You can use the arrow keys to adjust the value of the slider that is currently selected.

A complete list of the shortcut keys can be found in the Shortcut Keys section later in this manual.

Photoshop and other host software support many Image Modes, such as Grayscale, RGB, LAB, CMYK, etc. Images can also be 8, 16, or 32 bits per channel. Topaz Clean supports both 8 bits per channel and 16 bits per channel. Topaz Clean supports RGB mode only. To work on black-and-white images, first convert them to RGB mode.

Presets

Presets are a great way to speed up and simplify the whole process of using Topaz Clean. Presets are set previews with previously defined settings that you can recall and reapply at any time.

We've included some default presets for you and, although they won't work for every single photograph, they serve as excellent starting points for customized tweaking.

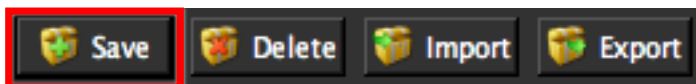
Applying Presets

Applying a default preset is easy and intuitive. Simply clicking on a preset will change all the settings in Topaz Clean to match those in the selected preset.

To get the exact results you want, you may still want to go through the tabs and tweak the parameters.

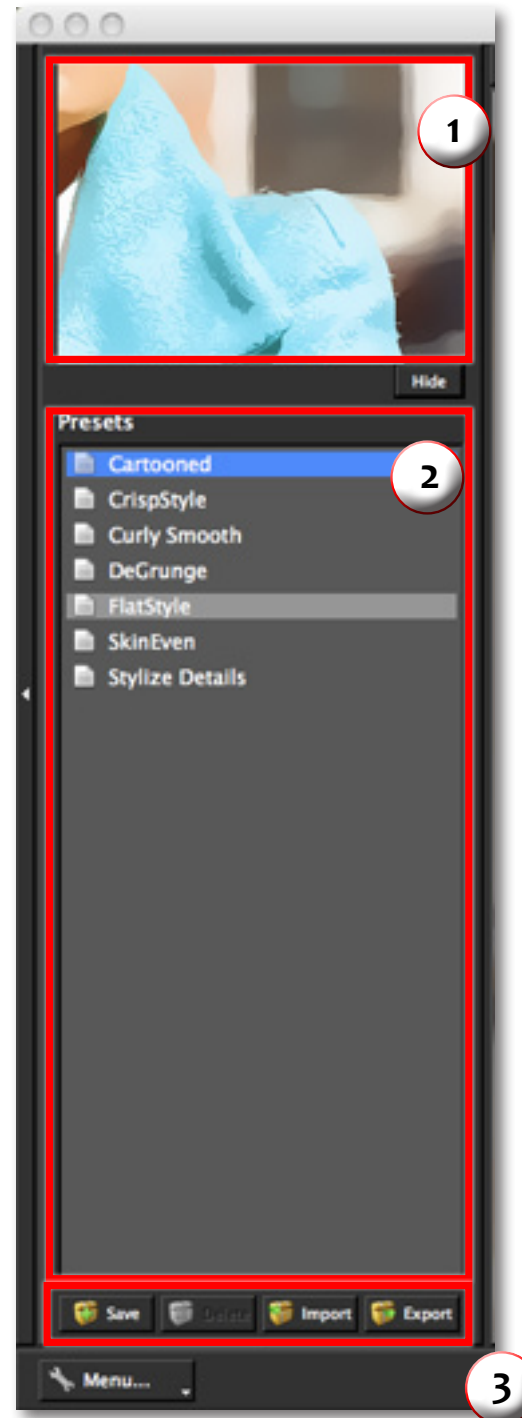
Adding Presets

Sometimes it's convenient to be able to define presets and save your settings for later use. To do this, first adjust the Topaz Clean parameters until you're satisfied with the result. Then, click on "Save".



Remember that you can easily expand or collapse the presets panel by clicking on the small white arrow on the edge of the panel or by grabbing the panel edge and dragging it in or out.

Work Area



1. Presets Preview

The removable preview window displays preset previews. Click Hide / Show to expand or collapse the preset preview window at anytime during your workflow.

2. Presets List

Lists all of the saved presets available for use.

3. Preset Options

The preset options allow you to save your presets, delete presets (default presents cannot be deleted), import new presets and export your saved presets to share with your friends.

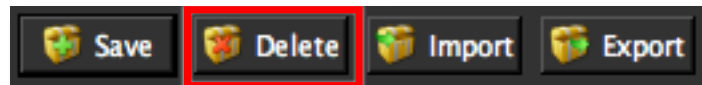
Then enter a preset name, select the type of image that it is good for and then enter a description and click “OK”. You can also select a second image category type that the preset is good for.

Note that if the name you’ve entered is the same as a preset you’ve already defined then you will be asked if overwrite the previous one.

Your preset will be automatically saved as a new file with a “.tpp” extension in the Topaz Clean Presets menu and the preview is automatically generated. To apply it later, just click it like any other preset.

Deleting Presets

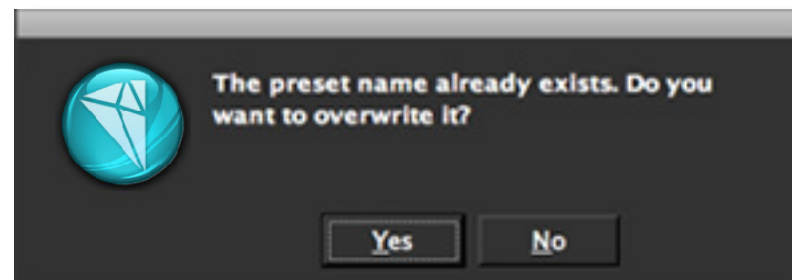
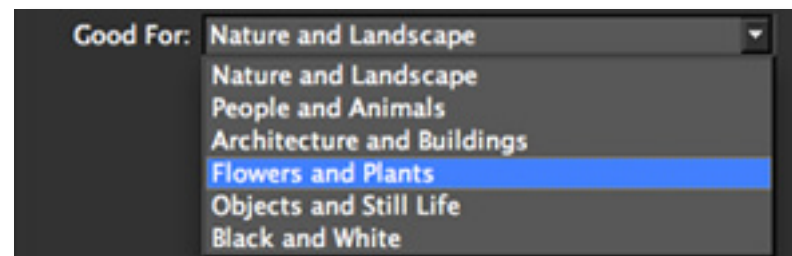
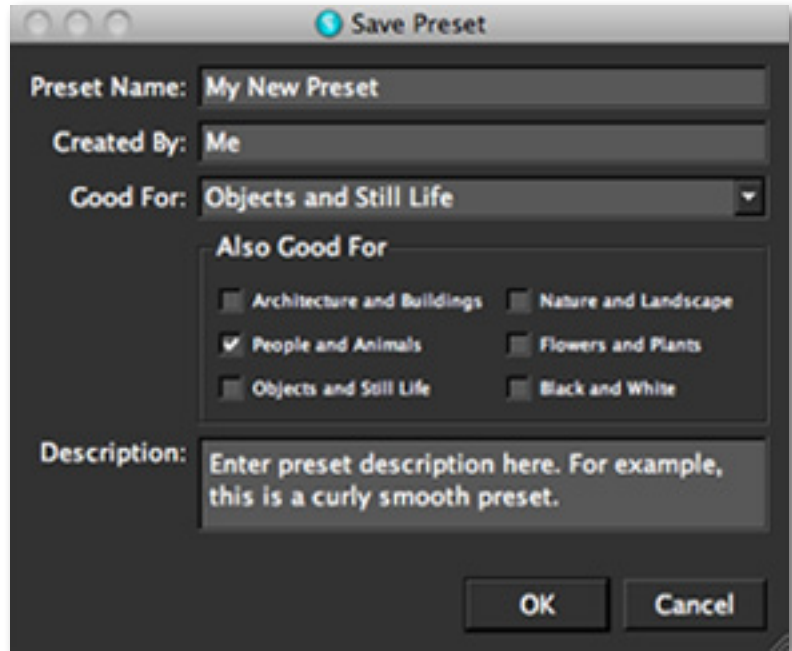
If you’d like to delete a preset the select the preset name and then click on Delete.



Please Note: Default presents cannot be overridden or deleted. Once you delete a preset it or overwrite it when saving, then it cannot be retrieved.

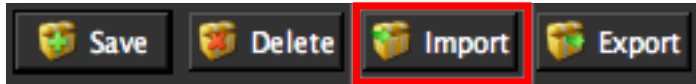
Saved presets are located in the Topaz Clean “Presets” folder:
C: \ Program Files \ Topaz Labs \ Topaz Clean \ Presets unless you’ve opted to install Topaz Clean into a different directory.

Mac users have this folder at Macintosh HD / Library / ApplicationSupport / TopazLabs / Clean / Presets.

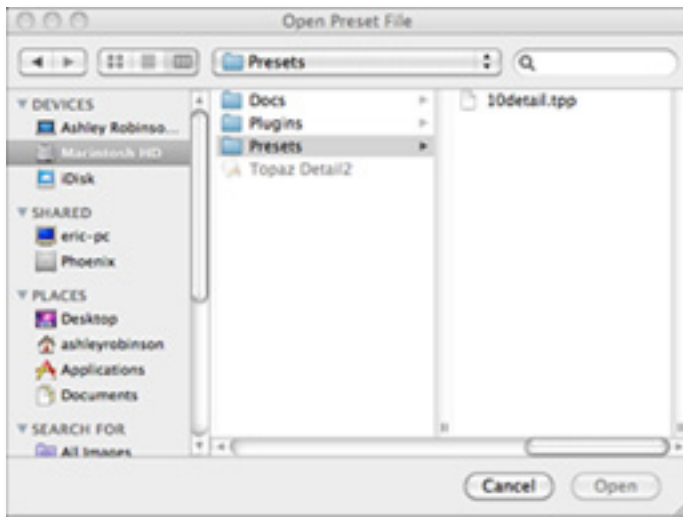


Importing Presets

To import a preset file, click the “Import” button.



This will open up a “Browse” box to import a saved preset from your computer into Topaz Clean. This is useful if you have downloaded a preset file that you’d like to use.



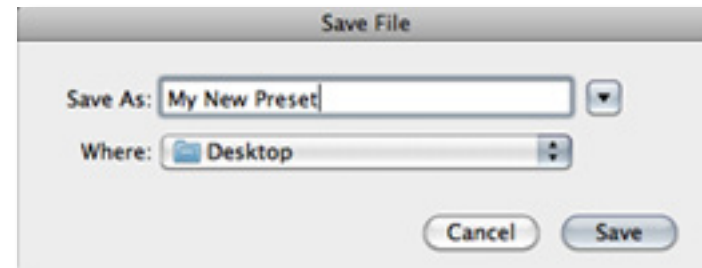
Visit the [Topaz Labs Blog](#) which features the latest Photography, software and design information including tutorials, videos, and thoughts about both Topaz and non-Topaz topics.

Exporting Presets

To export the preset file to a certain location, click “Export”.



Name your preset and save it to your desktop or other specified location that you have reserved for saved presets.



You can then share this preset file with others who may then import it.

Sharing Presets

Feel free to share your saved presets by emailing them to your friends and having them put it into their Topaz Clean Presets folder.

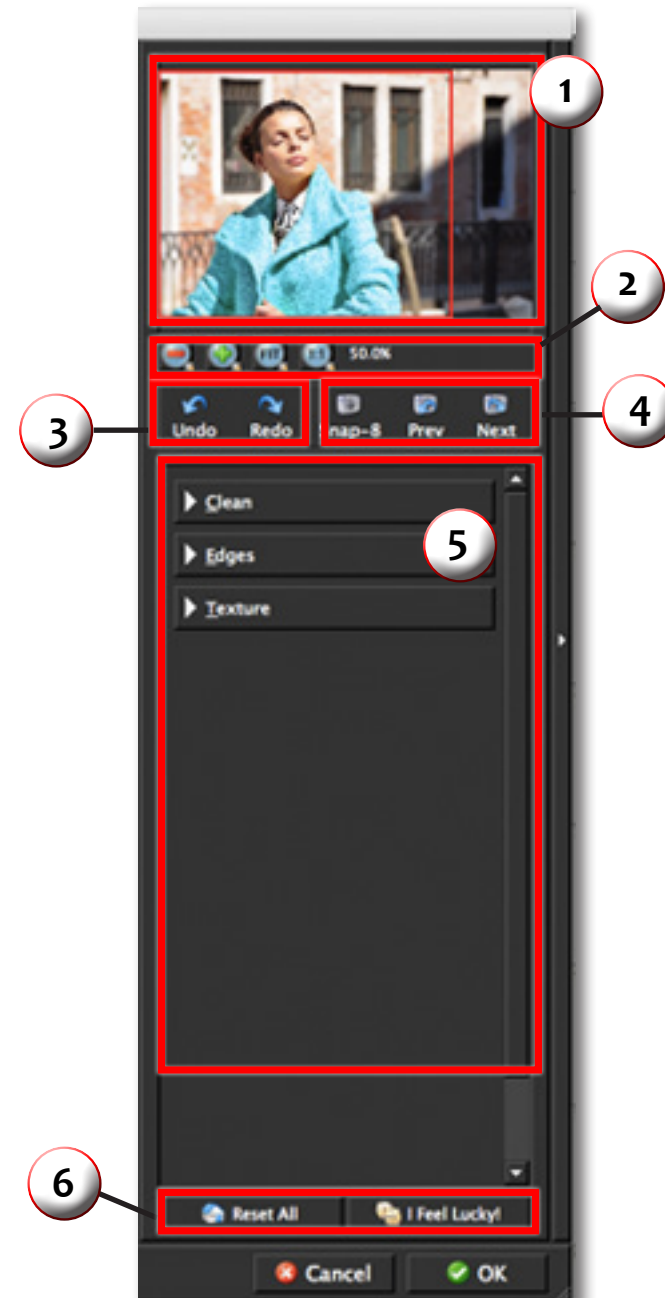
Tools

You will use the various tools in the tools panel during your workflow to make your image adjustments.

1. Preview Navigator - Displays the region of the preview image you are currently focused on.
2. Zoom Buttons - Use the zoom buttons to zoom in and out of your image. Or you can also set your image to fit the preview window or to view it at 100%.
3. Undo and Redo buttons
4. Snap and Recall buttons. Save up to 99 snapshot settings for comparison.
5. Sliders and Parameters - Controls the editing process using sliders to adjust the various effects.
6. Additional Slider Controls - Use the “Reset All” button to reset all of the sliders values back to zero. Use the “I Feel Lucky!” button to apply randomized settings to your image. This is useful when you want to experiment with different settings.

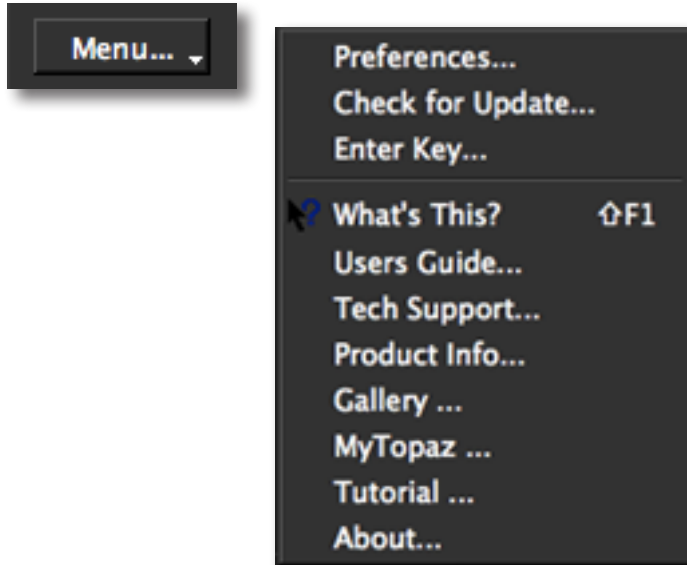
Have more questions about Topaz Clean 3 or any of the other Topaz software programs?

Check out the new Topaz Knowledge Base online at:
www.topazlabs.com/support/kb



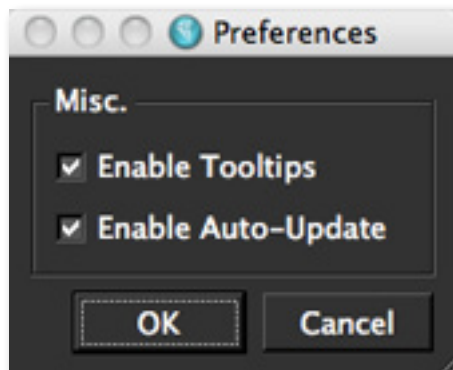
Menu

You can access Topaz Clean's menu by clicking on the "Menu..." button at the bottom of the interface.



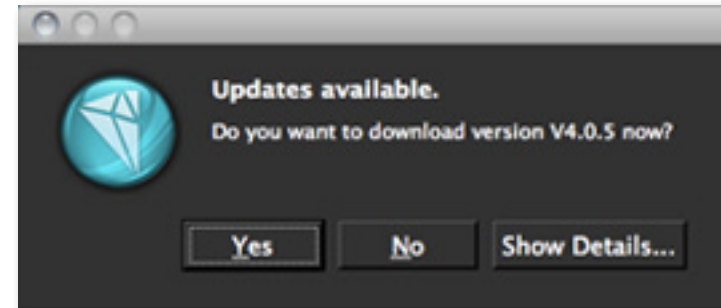
Preferences

Select this to enable or disable the program tool tips or the Auto-Update feature.

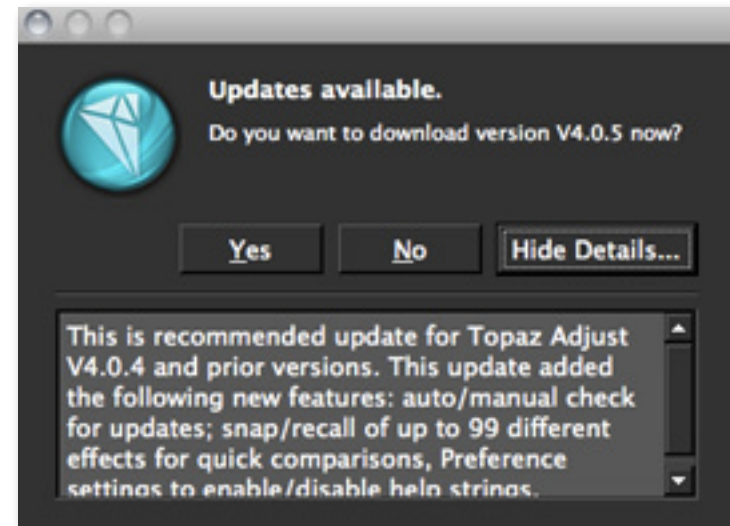


Check for Update

Checks for available Topaz Clean updates.

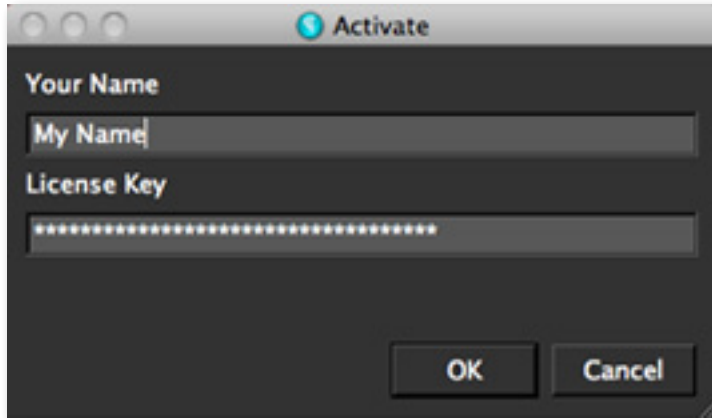


Click the Show Details button to get find out what's included in the update before you install.



Enter Key

Select this to enter your trial or purchased license key.

**What's This?**

Select this (or click F1) then click on a feature in the Adjust interface to learn more about it.

Users Guide

Select it to pull up this user guide.

Tech Support

Brings you to the Topaz Labs support page where you can request assistance from our support specialists, contact our customer service team, retrieve lost license keys, or browse through our Knowledge Base.

Product Info

Select this to go to the Topaz Clean web page to learn more about the Topaz Clean plug-in.

Gallery

Select this to open up your Internet browser and go to the Topaz Clean image gallery to see other user images enhanced with Topaz Clean.

MyTopaz

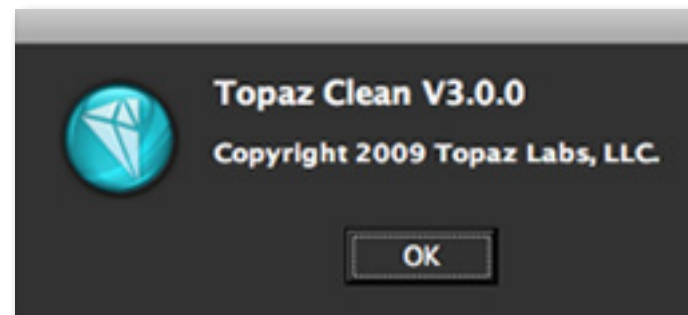
Brings you to the Topaz community where you can connect and interact with other Topaz users. Here you can also participate in discussions and contests, and share your favorite Topaz images.

Tutorials

Brings you to the Topaz Clean tutorials page where you can access a variety of helpful video and text tutorials. You can also submit tutorials that you created here as well.

About

Select this to see what version of Clean you currently have.



To connect with other Topaz users, participate in Topaz contests and to see the latest tips, tricks and tutorials sign up for the new Topaz Forum online at:
www.topazlabs.com/forum

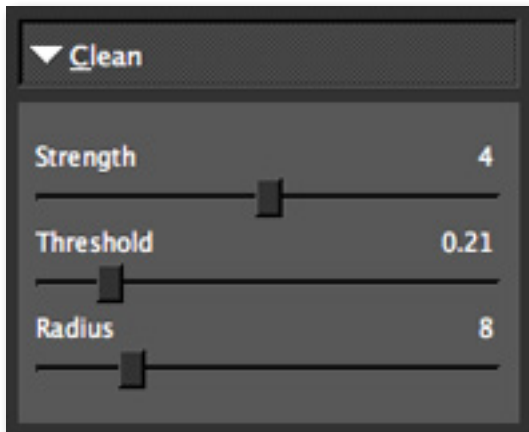
Parameters

Topaz Clean has three settings tabs and a total of 9 parameters to help you achieve optimal image results.



Clean

The Clean tab flattens texture, removes weak image detail, and makes images look more smooth and flat.



Need to reset your slider values?

Simply double-click on the slider name above the slider control to instantly reset the slider value to 0.

Settings & Parameters

Strength

Determines the overall strength of the cleaning effects. Increasing this parameter will smooth out texture of the image while retaining important structure and detail. It affects smoothness both in this parameter and in the Edges tab.

Threshold

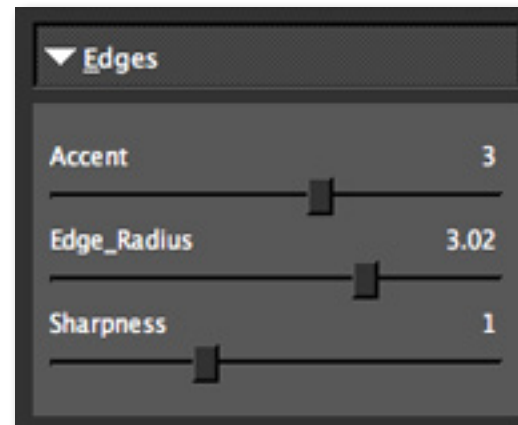
This sets the threshold for feature size to be removed. A higher value generally produces a flatter and smoother image with less depth.

Radius

The radius of the effect in pixels. A higher value generally creates a flatter image.

Edges

The Edges tab stylizes image detail and edges. It is ideally used for making edges smoother.



Accent

Controls the degree of edge enhancement. Increase this parameter to get more defined lines and edges. Using a higher value can also render curly-looking effects.

Radius

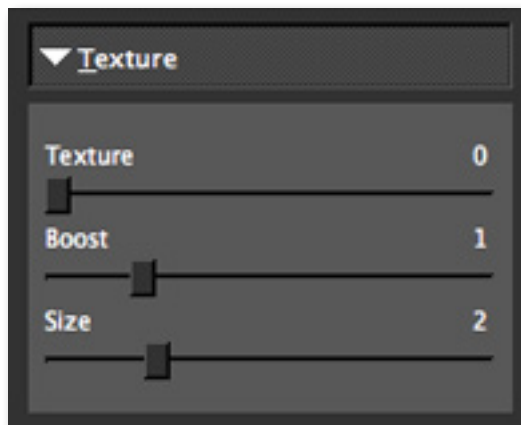
Defines the size of the edge being processed. A higher value produces thicker edges for a more defined look.

Sharpness

Sharpness control for edges. A higher value produces more pronounced edges with higher contrast.

Texture

The sliders in the texture tab are used for refining. These sliders allow you to reintroduce some of the original image features back into the image by imposing them on top of the processed image (the adjustments you made with the Clean and Edges tabs). This helps refine the image features, rendering the most natural look.



Settings & Parameters

Strength

Determines the amount of original texture to reintroduced into the image. A higher value brings back more texture and original detail.

Boost

Boosts the strength of smaller details while keeping strong texture intact. A value less than 1 will reduce the intensity of smaller details.

Size

Sets the fineness of detail texture (in pixels) to be preserved. A larger value will preserve larger detail as texture from the original image.



The best way to get great-looking images is to experiment with the filter until you're satisfied. Despite the number of sliders and settings, getting a great result is easier than you might think!

Sample Project #1

In this section, we will walk you through a sample project, step-by-step, to help you become more familiar with the Clean program focusing on using a combination of presets and manual adjustments.



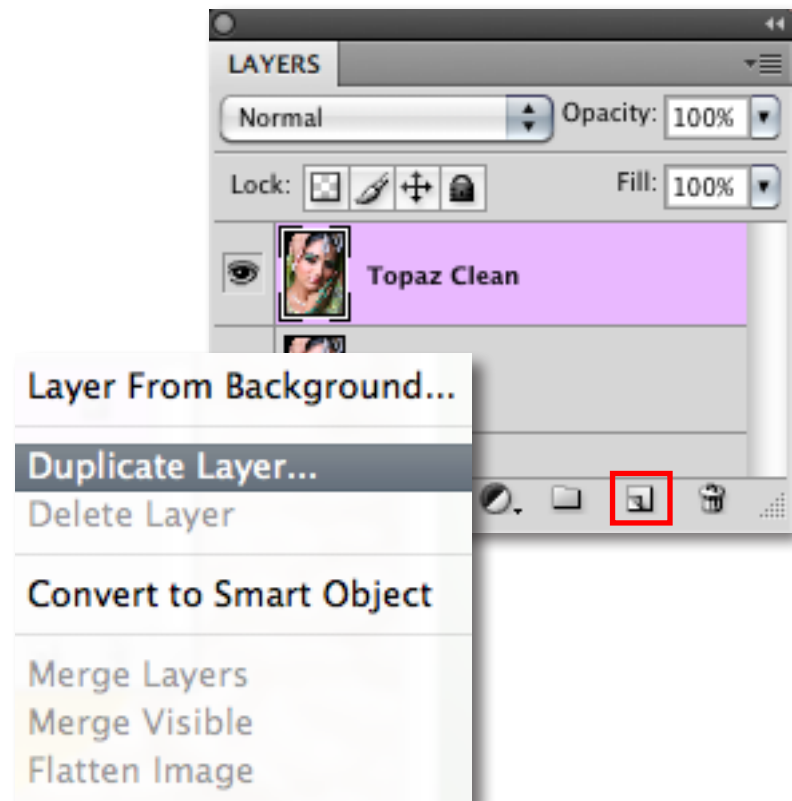
Before Topaz Clean



After Topaz Clean

We will be using this photo for our example. You can notice the artistic enhancement and detail enhancement in the before and after shots. In the following steps we will be showing you how to achieve these optimal results with your own photos. Lets get started.

1. Open an image file.
2. Create a duplicate layer of your image. Right-click on your image layer in your layers and select “Duplicate Layer”. You can also achieve this by selecting your image layer and dragging it down to the new layer icon.



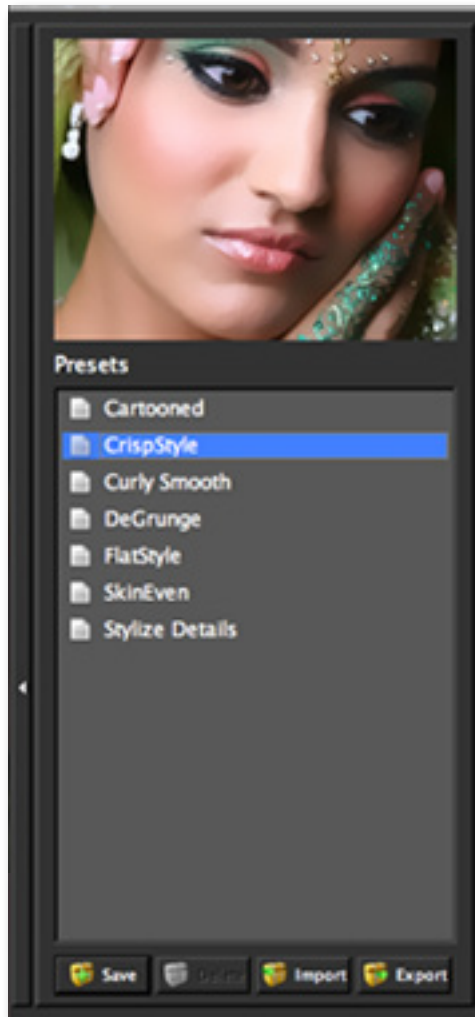
3. To begin working on your image go to Filters -> Topaz Labs -> Clean 3.

4. Once your image loads, use the zoom tools to zoom in on a specific part of your image. Then you can click on the preview and drag it around until you find an area that you like.

We want to smooth out the texture of the model's skin and slightly intensify the lines and edges seen in the image. To achieve this we will be working with the presets and detail sliders for this example, but you can start any way you like.



5. If you want to choose a default preset, scroll through the panel on the left side of the screen. To select it, just click on it and the sliders will automatically adjust to the pre-defined settings and parameters. For this example we will be using the Crisp Style preset.

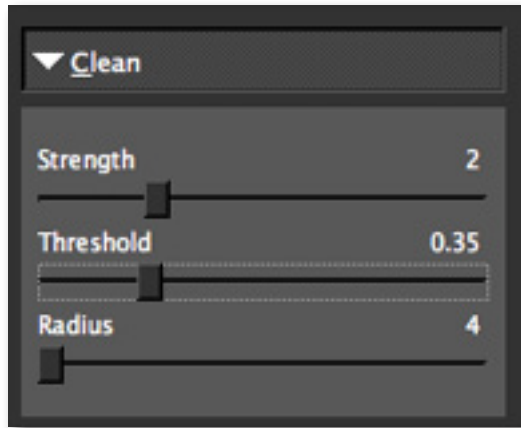


If you are satisfied with the preset adjustments then you can click “OK” to process your image and save it back to Photoshop.

If you would like to make some additional adjustments to your enhancement settings then you can do so by adjusting any of the sliders in the three tabs manually until you achieve your preferred image results.

Don't forget that you can use the shortcut keys in Topaz Clean 3 to speed up your workflow.

6. Start in the Clean tab. It is a good idea to begin here, and then progress to the Edges and Texture tabs in order to see the effects of your adjustments easily.



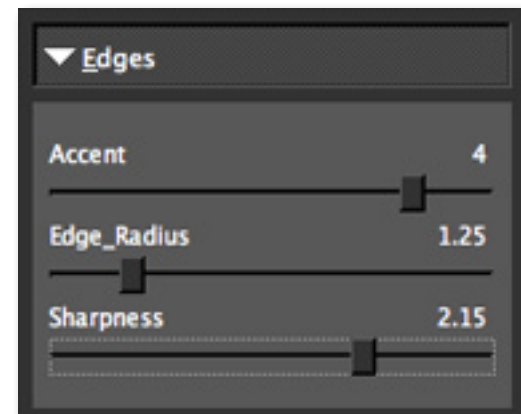
7. Slowly adjust each of the sliders to create the optimal exposure in your image. Adjusting the Strength slider will smooth the texture and weaken image details. The higher the Strength value is, the more pronounced effects you will see.

8. You can also change the strength of the detail reduction by increasing the “Threshold.” Also, adjusting the “Radius” will alter the reach of the effect; increasing this parameter will create a flatter image. Too high a value will result in a loss of texture and detail. For this example we will slightly lower the Threshold and Radius sliders.

You can enhance the appearance of the details in your image by increasing the Sharpness slider.

When you are happy with the Clean settings, move on to the Edges tab to stylize the edge details in your image.

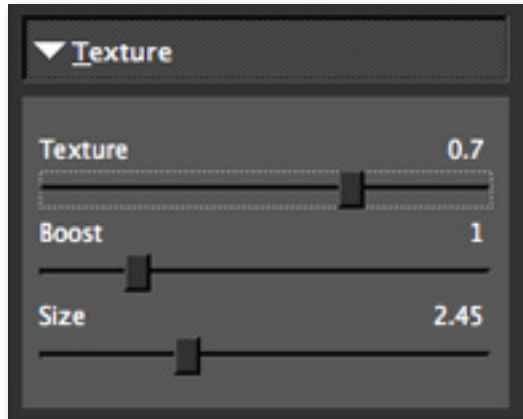
9. You can start with “Accent” to adjust the edge smoothness in your image. A higher value will also render curly-looking effects.



10. If you want to modify the size of your edges use the “Radius” slider.

11. Then, if you want to make the edges of your image stand out more, you can do so by adjusting the “Sharpness”. Using a higher setting will produce more pronounced edges with higher contrast. For this example we will slightly increase the Edge Radius and Sharpness sliders.

12. Next, move to the Texture tab. Here you can refine your image's features by reapplying original features. This will give your image a natural look.



13. If you want to reduce the smoothness of your image without increasing detail then increase the “Strength” slider. Be careful not to over-use this slider, doing so will make your image appear extremely grainy.

Use the “Boost” and “Size” sliders to define the texture in your image.

14. Increase “Boost” to increase the intensity of smaller details. Increase “Size” to preserve more original image detail. Be careful not to over-use these sliders, doing so will make your image, grainy, fuzzy colorful.

Tip: If you experience a loss of color intensity you can easily revive it in Photoshop. Just go to Image -> Adjustments -> Hue / Saturation and adjust the Hue and Saturation sliders until you are satisfied. Or you can use Topaz Adjust!

14. All that's left now is to click OK and watch your image transform.



Before Topaz Clean



After Topaz Clean



Before Topaz Clean



After Topaz Clean

Sample Project #2

In this project, we will walk you through a second Clean workflow to show you how easy it is to instantly clean up skin.



After Topaz Clean

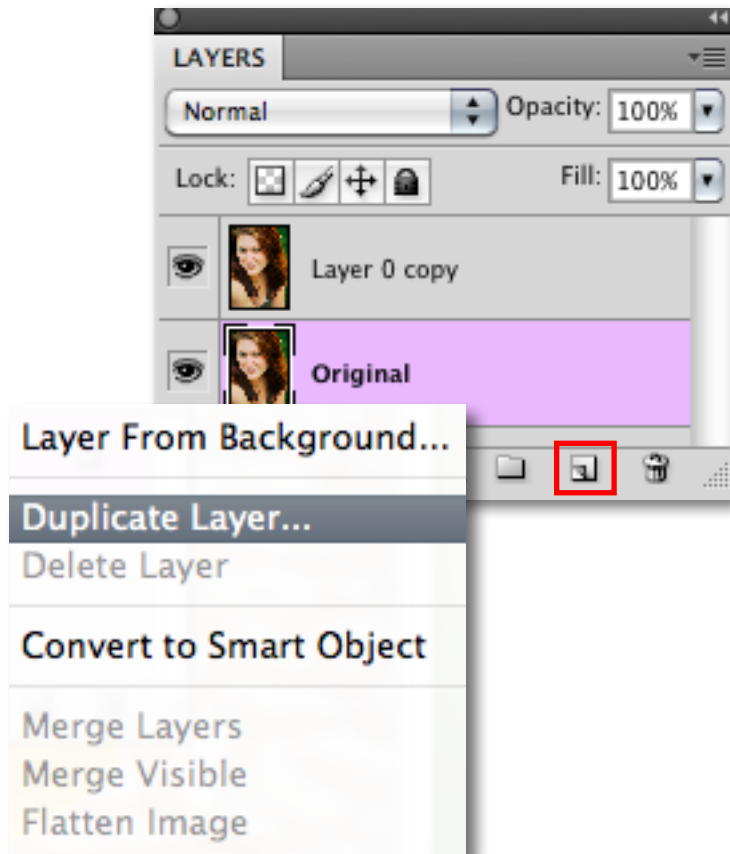
Please visit the Topaz Clean website at <http://www.topazlabs.com/clean> for video tutorials, tips, and tricks!



Before Topaz Clean

We will be using this headshot for our example. You can see the difference in the appearance of her skin in the before and after images. In the following steps, we will show you how to achieve optimal results with your own photos, following this model. Let's get started.

1. Open an image file.
2. Create a duplicate layer of your image. Right-click on your image layer in your layers and select “Duplicate Layer”. You can also achieve this by selecting your image layer and dragging it down to the new layer icon.



Our goal with this image is to even out face skin tone, however we do not want to affect the rest of the image. To achieve this, we will make a selection of just her face and then process our selection in Topaz Clean.

3. Go to your Photoshop toolbox and select the Quick Selection tool. We will use the Quick Selection tool to only select her face. You can also include the neck in the selection if you would like.

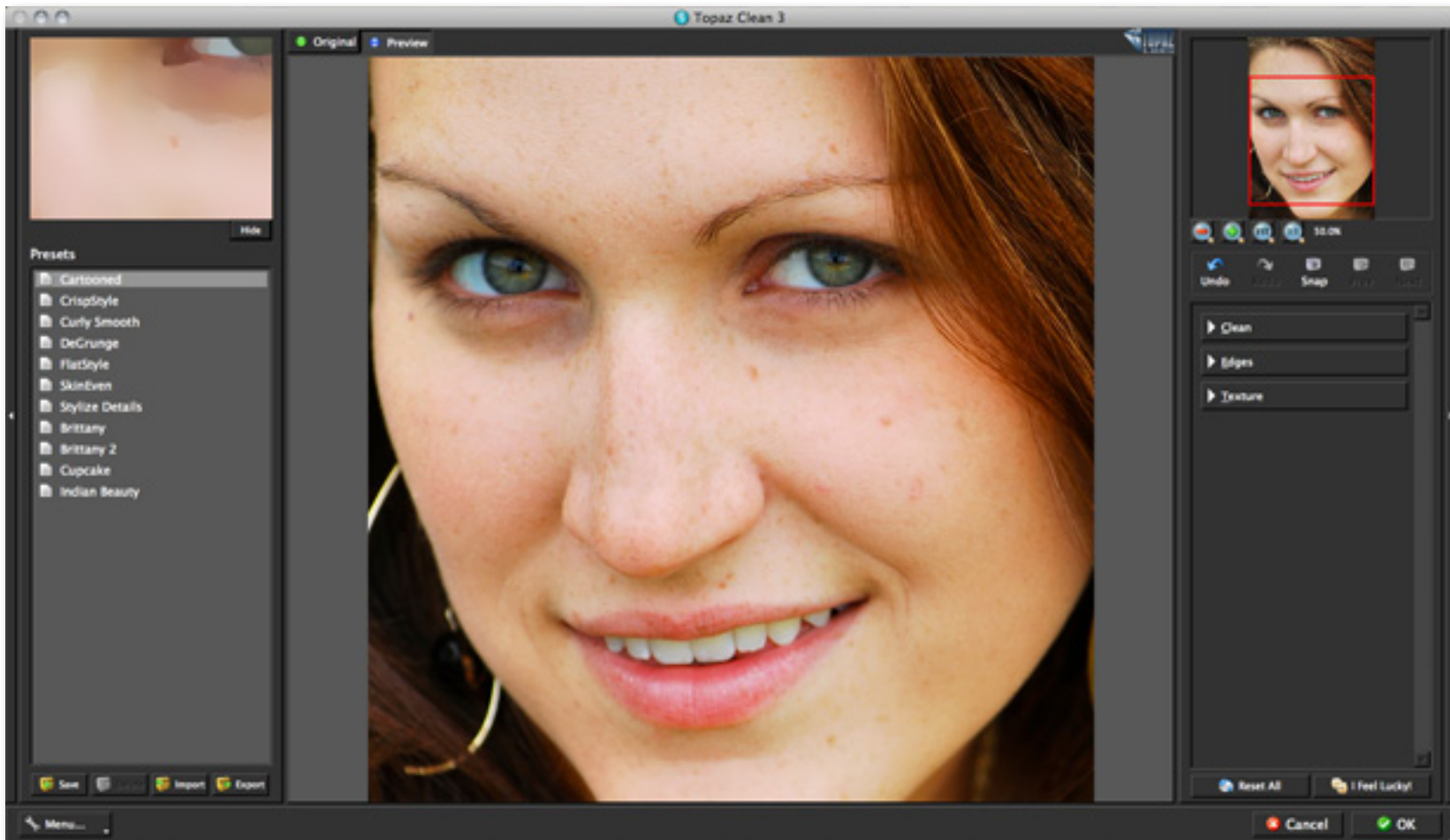


After you make your selection you can open Topaz Clean and begin smoothing out her skin. Go to Filters -> Topaz Labs -> Clean 3

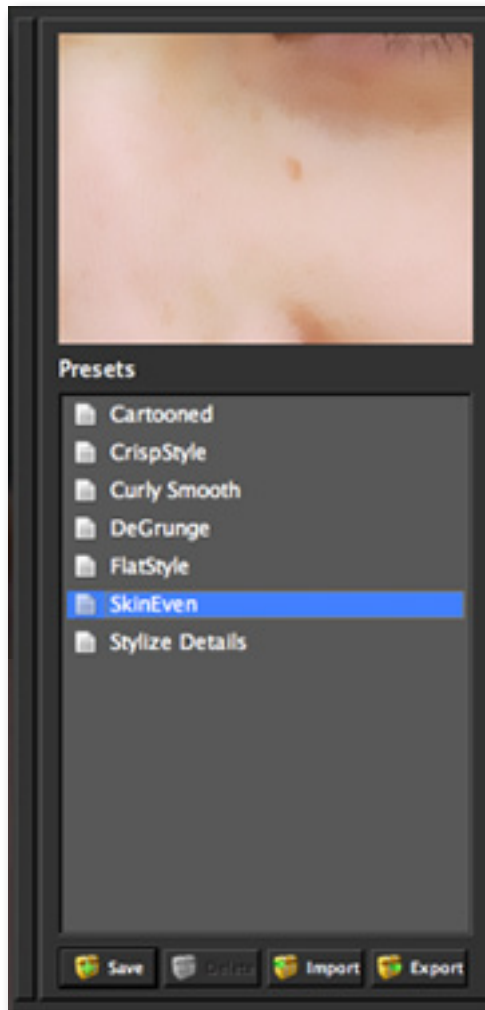
Don't forget that you can use the shortcut keys in Topaz Clean 3 to speed up your workflow.

4. Once your image loads, use the zoom tools to zoom in on a specific part of your image. Then you can click on the preview and drag it around until you find an area that you like.

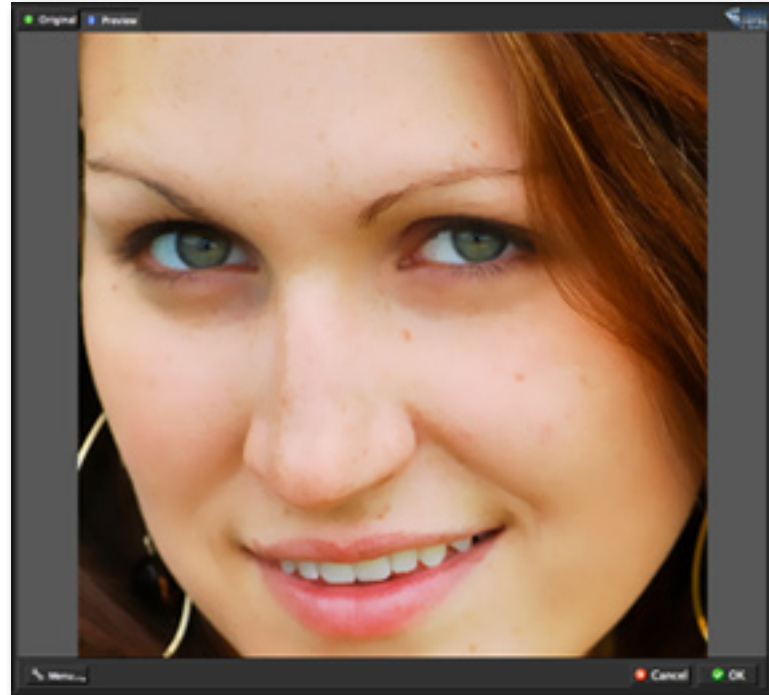
We want to smooth out her skin and reduce some of her blemishes. We will be using a combination of presets and manual adjustments for this example, but you can start any way you like.



5. If you want to choose a default preset, scroll through the panel on the left side of the screen. To select it, just click on it and the sliders will automatically adjust to the pre-defined settings and parameters. For this example we will be using the Skin Even preset.



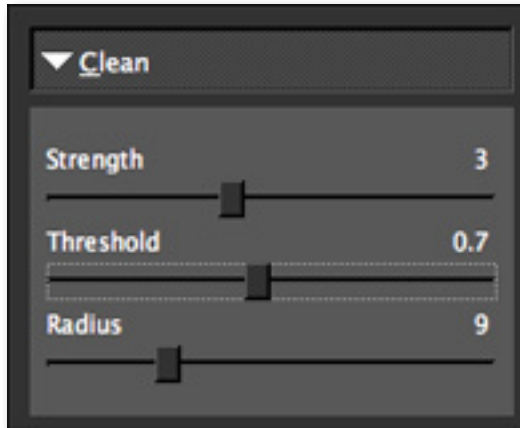
With a wide variety of presets you will often find that a single selection will give you optimal image results.



If you are satisfied with the preset adjustments then you can click “OK” to process your image and save it back to Photoshop.

If you would like to make some additional adjustments to your settings then you can do so by adjusting any of the sliders in the three tabs manually until you achieve your preferred image results.

6. Start in the Clean tab. It is a good idea to begin here, and then progress to the Edges and Texture tabs in order to see the effects of your adjustments easily.

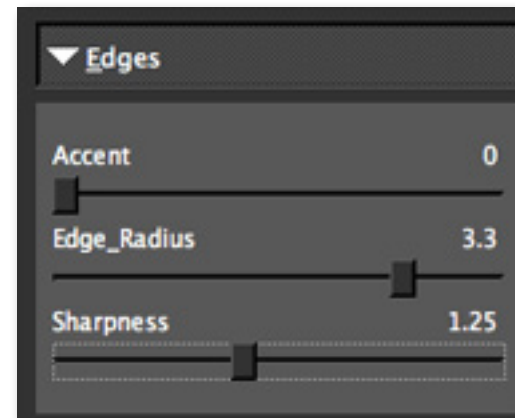


7. Slowly adjust each of the sliders to create the optimal exposure in your image. Adjusting the Strength slider will smooth the texture and weaken image details.

8. You can also change the strength of the detail reduction by increasing the “Threshold.” Also, adjusting the “Radius” will alter the reach of the effect; increasing this parameter will create a flatter image. Too high a value will result in a loss of texture and detail.

When you are happy with the Clean settings, move on to the Edges tab to stylize the edge details in your image.

9. You can start with “Accent” to adjust the edge smoothness in your image. A higher value will also render curly-looking effects.

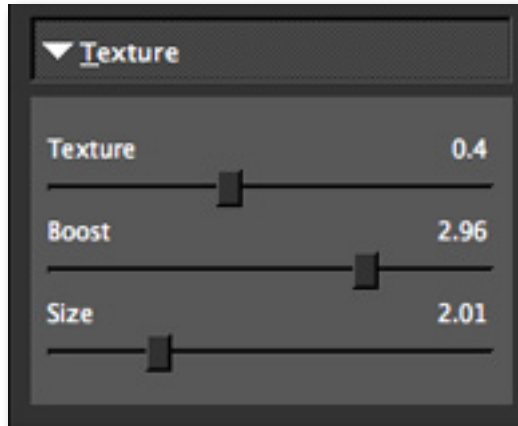


10. If you want to modify the size of your edges use the “Radius” slider.

11. Then, if you want to make the edges of your image stand out more, you can do so by adjusting the “Sharpness”. Using a higher will produce more pronounced edges with higher contrast.

In addition to using the Sharpness slider to sharpen your image details you can also use Topaz Detail.

12. Next, move to the Texture tab. Here you can refine your image's features by reapplying original features. This will give your image a natural look.

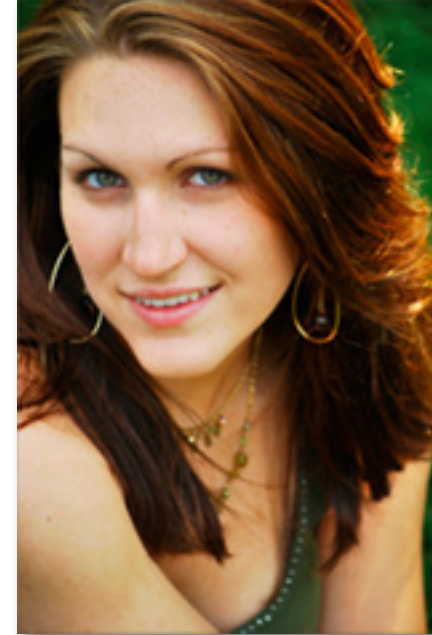


13. If you want to reduce the smoothness of your image without increasing detail then increase the “Strength” slider. Be careful not to over-use this slider, doing so will make your image appear extremely grainy.

Use the “Boost” and “Size” sliders to define the texture in your image.

14. Increase “Boost” to increase the intensity of smaller details. Increase “Size” to preserve more original image detail. Be careful not to over-use these sliders, doing so will make your image grainy, fuzzy and colorful.

14. All that's left now is to click OK and watch your image transform.



Before Topaz Clean



After Topaz Clean



Before Topaz Clean



After Topaz Clean

Achromatic - Without color.

Adjustment Layer – A layer that allows you to adjust the look of an original image without making it permanent. With adjustment layers you can make various changes to a layer without damaging it and go back and readjust it at anytime.

Algorithm - Any bit of code or programming that defines a process.

Blur - Make or become unclear or less distinct.

Brightness - The degree to which a color sample appears to reflect light.

Chroma - Purity or intensity of color. The difference of a color against the brightness of another color that appears white under similar viewing conditions.

CMYK - Cyan, magenta, yellow, and black. A color model commonly used for 4-color printing by printers to define and mix all of the colors they are capable of outputting.

Color - The human perceptual response to different wavelengths of light impinging on the photo receptors in the retina.

Color channel - The visual component of a color digital image that represents all the pixels in that picture made up of a specific primary color. In a typical digital photo, the primary colors of red, green and blue (from the RGB color model) create all the colors in that photo, which may be represented by three color channels, each of red, green or blue.

Color Profile - defines the range of colors that can appear in a digital photo.

Desaturate - Decreasing the intensity of a color (hue).

Download - The process of transmitting or transferring data from one device to another.

Export - Outbound data transfer in a format that can be used by other programs.

Grain - Lightly-speckled noise that is used to apply a more natural look to an image.

HDR (High Dynamic Range) - Allows a greater dynamic range of luminances between the lightest and darkest areas of an image than standard digital imaging techniques or photographic methods. This wider dynamic range allows HDR images to more accurately represent the wide range of intensity levels found in real scenes, ranging from direct sunlight to faint starlight.

Hue - One of the main properties of a color, described with names such as “red”, “yellow”, etc.

Import - Inbound data transfer into a file or document.

Noise - Visible effects of interference in an image from a digital camera. Often appearing as random colored dots sprinkled throughout the image or uneven coloration in what should be smoothly-colored areas. It is most likely to show up in the darker or shadowed areas of an image. Noise can be an undesirable effect that detracts from overall image quality or something you can choose to create artistically.

Opacity – The amount of transparency a layer has.

Pan and Zoom - A useful function that allows users to magnify the captured image in the preview and then, by using the cursor, to move or pan around the image. Typically Pan and Zoom allows users to magnify the image 2x or 4x time. By magnifying the images and zeroing in on a specific section, you can see details not visible when the entire image is sized to fit the preview.

Parameter - A numerical or other measurable factor forming one of a set that defines a system or sets the conditions of its operation.

Photo-editing or Imaging software – Programs in which you can alter your photos and / or create digital images. Depending on the software, you can improve exposure, color and other attributes of your picture, paint on it, add type, apply special effects, remove noise, resize it, combine it with other pictures, prepare it for e-mail or posting on the web, output it to a printer, or do any number of other manipulations or edits.

Plug-in - A computing feature with the ability to be added to a system to give extra features or functions.

Preset - A pre-defined combination of parameters and settings that is saved into a folder within Topaz Detail 2. Topaz provides default presets. A preview of each preset can be seen in the preset preview window located at the top left hand side of the interface above the preset list.

Preview- Shows the processed preview of the image.

RAW image - An image file format that contains untouched, “raw” pixel information straight from the digital camera’s sensor. It has yet to translate the information in each pixel into the full color information, so this format offers more control over how the final JPEG or TIFF image is generated.

Reduce Blur - An de-blur function that uses deconvolution technology rather than simple sharpening techniques.

Refine – Improve (something) by making small changes to make it more subtle and accurate.

RGB - Red, Green, Blue. The color model that is used in digital cameras and by computer monitors.

Saturation - The difference of intensity within a specific hue.

Shadow - A dark area or shape produced by a body coming between the rays of light and a surface.

Sharpness - The clarity of detail in a photo.

Smoothing - To make a surface more regular or consistent; free from perceptible projections, lumps, or indentations.

Texture - The feel, appearance, or consistency of a surface or a substance

“I need a Topaz Clean trial key.”

Visit <http://www.topazlabs.com/downloads> for a trial key. Please check your Spam folder because your Spam filter sometimes filters out the automated email.

If you need more time to evaluate, please contact us at: www.topazlabs.com/support for an extended trial key.

“I can’t find Topaz Clean in the Photoshop Filters menu.”

If you’re using Windows:

1. Go to C: \ Program Files \ Topaz Labs \ Topaz Clean 3 \ Plug-ins. Right click the file “tlclean 3.8bf” and click “Copy”.
2. Go to your Photoshop Plug-Ins folder, usually located at C: \ Program Files \ Adobe \ Photoshop CSx \ Plug-Ins. First, delete anything that is currently there that has to do with Topaz Clean 3. This includes any folder that might be labeled “Topaz Clean 3” or any tlclean 3.8bf file. After doing that, right-click on any empty space and click “Paste”.
3. Quit and restart Photoshop and Topaz Clean 3 will appear in your Filters menu.

If you’re using Mac:

1. Go to Macintosh HD \ Library \ Application Support \ Topaz Labs \ Clean 3 \ Plug-ins and right-click Topaz_Clean 3.plugin. Click “Copy”.
2. Go to Applications / Adobe Photoshop CSx / Plug-Ins (or wherever your Photoshop Plug-Ins folder is located). Delete any current reference to Topaz Clean
3. Afterwards, right-click any empty spot and paste the

Frequently Asked Questions

Topaz_Clean 3.plugin file into the Photoshop Plug-Ins folder.

3. Quit and restart Photoshop and Topaz Clean 3 will appear in your Filters menu.

“Do you have any other Clean tutorials?”

Yes, please see pages 24 and 31 of this Topaz Clean user guide, and also visit: <http://www.topazlabs.com/tutorials/clean>

“I do not have Photoshop, will Clean work with my Elements, Aperture, Lightroom, iPhoto Paint Shop Pro, Photo Impact or Irfanview?”

Yes, you can use Topaz Clean with any of the above host programs. However, to use Clean in Aperture, Lightroom or iPhoto, you will need to download the free Topaz Fusion Express plug-in. For more information please visit: www.topazlabs.com/fusion

“What are the limitations of the trial version of your software?”

The only limit on the trial versions of the Topaz plug-ins is time. The free trial versions are designed to enable you to experience the full functionality of our plug-ins for a 30-day trial period. After the trial period is up, you will only be able to use the Topaz software by purchasing it. You will then receive a license key to activate the plug-in, and the trial version will automatically become the full version with no time limitations.

“If I use the 30-day trial version will I need to uninstall the trial version before I upgrade to a full version?”

No, the Topaz trial software is designed to be unlocked to become the full version simply by entering a license key. The full license key will be e-mailed to you immediately after you purchase the software.

.....

“Where do I enter my key?”

To enter your key please open an image in Photoshop and go to Filter -> Topaz Labs -> Clean 3 -> Menu -> Enter Key. You can then copy & paste or type in your license key and then select OK.

.....

“I had Topaz Clean as a trial, then I purchased. How do I enter my new license key?”

You can enter your new license key by opening up an image in Photoshop and go to Filter -> Topaz Labs -> Clean 3 -> Menu -> Enter Key. Please remove the trial key and enter your new purchased license key, then select OK and you are all set.

.....

“My Topaz Clean key doesn’t work!”

There are a couple of reasons why Topaz Clean might think your key is invalid.

First, make sure that your key is in the proper format. It’ll be in the format “xxxxxx-xxxxxx-xxxxxx-xxxxxx-xxxxxx” and will be all numbers in 30 digits in five groups of six (no letters).

Second, make sure that as you’re entering the key

Frequently Asked Questions

there is nothing in the space beforehand. This means clicking, pressing Ctrl-A, and hitting delete to make sure that absolutely nothing is in that field before you paste in the key.

If it doesn’t work when you copy and paste, try typing it out, and vice versa.

.....

My Topaz filters are grayed out in the filter menu.

Please make sure that you are using a 8-bit or 16-bit image that is in RGB color mode. Also, if your project includes adjustment layers please make sure that you are not on an adjustment layer. You will need to select the image layer. This will allow you to access your Topaz programs.

.....

I have a question not listed here.

Please visit our knowledge base online at:
<http://www.topazlabs.com/support/kb/>

If you are not able to find the answer there then contact our support specialists online at: www.topazlabs.com/support or e-mail customer support at: help@topazlabs.com

Topaz Clean uses some shortcut keys to speed up your workflow. Many of these keys are similar to those in Photoshop. The following keys work at all times.

MAC Shortcut	PC Shortcut	Action
Spacebar	Spacebar	View Original Image
CMD-ALT-R	CTRL-ALT-R	Reset All
Zoom to Fit	CMD-o	CTRL-o
Zoom to 100%	CMD-ALT-o	CTRL-ALT-o
+ or CMD - +	+ or CTRL - +	Zoom In
- or CMD - -	- or CTRL - -	Zoom Out
CMD -Z	Ctrl - Z	Undo
CMD - Shift - Z	Ctrl - Shift - Z	Redo
C		Expands / Collapses Clean Tab
E		Expands / Collapses Edges Tab
T		Expands / Collapses Texture Tab
S		Takes a Snapshot
CMD-Shift-P	CTRL-Shift-P	Recalls previous Snapshot
CMD-Shift-N	CTRL-Shift-N	Recalls next Snapshot
CMD-1	CTRL-1	View Original Image
CMD-2	CTRL-2	View Adjusted Image
Left or Right Arrow Key		Scrolls through presets
Return (enter) key		Applies selected preset
[key		Reduces selected slider value by 0.1
] key		Increases selected slider value by 0.1
Home Key		Set the slider value to minimum
End Key		Set the slider value to maximum
Double-click slider name		Resets the slider to it's default value

Connect with Topaz



Check out our new **Forum** and our **blog** for tutorials, tips and updates from Topaz Labs!



Follow us on Twitter for notifications of recent news and easily get in touch with us whenever you feel like it!



Find us on our Facebook page and network with other Topaz users!



Participate in the entirely user-led Topaz Flickr group for a helpful and highly active community for Topaz Photoshop plug-ins!



Subscribe to our YouTube channel to keep up with any newly released product video tutorials!

Contact Information

Topaz Labs LLC

5001 Spring Valley Road
Suite 400 East
Dallas, TX 75244

Technical Support

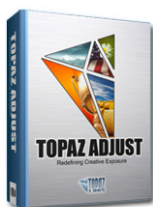
Visit: <http://topazlabs.com/support/>

Email us at: help@topazlabs.com

Topaz Labs LLC, a privately owned company in Dallas, Texas, focuses on developing advanced video and image enhancement technology. With today's widespread use of digital still cameras, digital video cameras, and HDTV, the need for high-quality digital images and videos has greatly increased. Topaz Labs' mission is to bring practical state-of-the-art image and video enhancement technology to both professionals and consumers.

Be sure to check out the complete line up of Topaz products.

Image Plug-ins



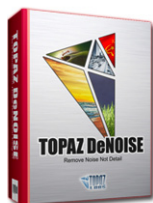
Ultimate control over image exposure, detail, and color gives you the power to make your photos pop.



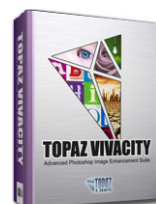
Advanced JPEG artifact reduction filters eliminate JPEG compression artifacts while preserving image detail like never before.



3 levels of intricate and specific detail enhancement for naturally enhanced images with no halos.



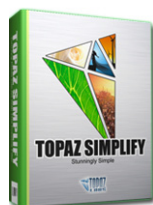
Advanced noise reduction filters noise while maximizing and retaining image detail simply and effortlessly.



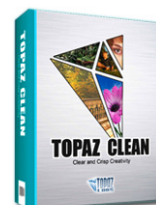
Specializes in overall image improvement. Features sharpening, re-constructing, enlarging, high-quality noise removal and JPEG artifact damage tools.



Remove unwanted backgrounds from your digital images quickly and easily with the new Topaz ReMask.



Takes any of your regular photos and effortlessly turn them into beautiful works of art.



Specializes in creating crisp and stylized images. Also features extensive smoothing capabilities.



Bring the power of Topaz to your Aperture, iPhoto and Lightroom workflow with the new Fusion Express plug-in.

Video Plug-ins



Increase video quality with this suite of video enhancement filters utilizing super-resolution technology.



Easily and efficiently capture video frames and significantly increase their quality and resolution with this stand-alone Windows application.

Go to <http://www.topazlabs.com/downloads> to get your 30-day free trial!