



BG-C6

BATTERY GRIP

Designed for the Canon
EOS 60D SLR Camera



USER'S MANUAL

Introduction

Thank you for choosing Vello and congratulations on your new BG-C6 battery grip purchase. Enjoy the many benefits that a battery grip offers, such as extended shooting time and more control and comfort when shooting in a vertical (portrait) orientation.

The Vello BG-C6 is compatible with the Canon EOS 60D SLR camera. The BG-C6 accepts two Canon LP-E6 rechargeable batteries, or six AA batteries (alkaline, Ni-MH, lithium, or nickel-manganese) can be used instead for added convenience. The BG-C6 is equipped with an alternate shutter-release button, AF point selection, AE lock/FE lock button, AF Start, and main dial for shooting in a vertical position.

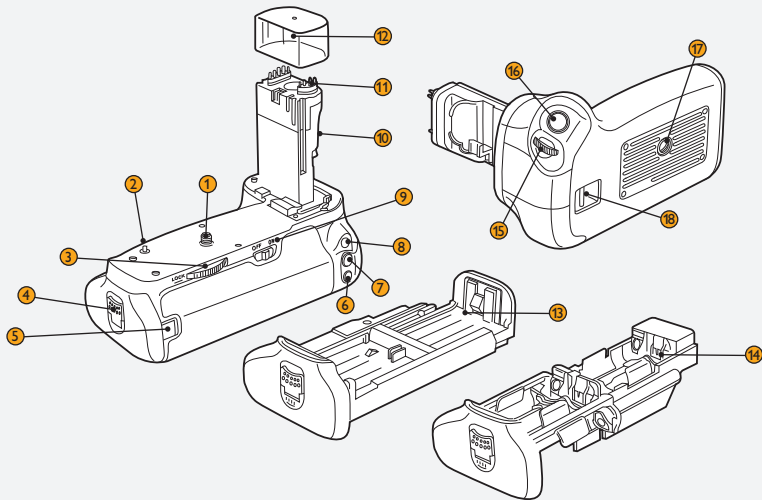
Please read through this entire manual before using the BG-C6 battery grip.



Precautions

- 1.** The BG-C6 should only be used with compatible devices specified in this manual.
 - 2.** Only use with batteries and battery holders recommended in this manual.
 - 3.** Cover the power terminals with the contact cap when the BG-C6 is not in use. This prevents electrical shorts caused by metal objects touching the power terminals.
 - 4.** When the battery holder is removed from the grip, remove the batteries or place the holder in a container to prevent electrical shorts caused by contact with other metal objects.
 - 5.** If you notice smoke, an unusual smell or noise from the battery pack, discontinue use immediately.
 - 6.** Turn the grip power off when not shooting vertically.
 - 7.** The battery level may not display properly if batteries are inserted before mounting the grip.
 - 8.** Remove batteries from the grip when not in use.
 - 9.** Do not attempt to disassemble.
 - 10.** Avoid water or extreme humidity and keep in a dry and cool place.
 - 11.** Keep out of reach of children.
- Remove the batteries and take the device to a Vello authorized reseller.

Overview



① Mounting Screw

Aligns with the camera's tripod socket.

② Guide Pin

Helps align the camera to the grip.

③ Attachment Wheel

Secures the grip to the camera.

④ Battery Compartment Cover

⑤ DC Coupler Cord Mount

Groove for use with the Canon AC Power Adapter (ACK-E6).

⑥ AF Point Selection/Magnify Button*

⑦ AE Lock/FE Lock/Index/Reduce Button*

⑧ AF Start Button

⑨ BG-C6 Grip Power ON/OFF

⑩ Camera Battery Chamber Cover Holder

Stores the cover when the grip is mounted.

⑪ Electrical Contacts

Communicates with the camera's electronics.

⑫ Contact Cap

Protects grip contacts. Keep covered when the grip is not in use.

⑬ Battery Holder

Holds up to two Canon LP-E6 batteries.

⑭ AA Battery Holder

Holder for six AA batteries.

⑮ Main Dial*

⑯ Shutter-Release Button*

⑰ Tripod Socket

For mounting on a tripod.

⑱ Hand Strap Mount

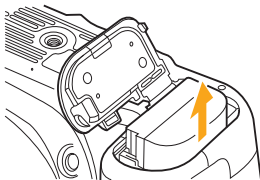
Optional hand strap may be mounted for a secure hold while shooting.

** Performs the same function as on the camera.*

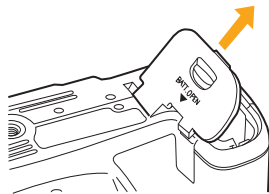
Attaching The Grip



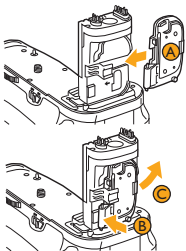
1. Ensure that the power is turned off on the camera and that the power switch is set to OFF on the battery grip.



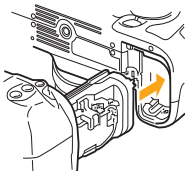
2. Remove the battery from the camera battery compartment.



3. Open the camera battery chamber cover at a 35° angle and gently pull the cover to remove it.



4. To prevent loss, slide the camera battery chamber cover into the BG-C6 battery chamber holder (A). To remove the cover, press lightly on the cover hinge (B) and pull it up at an angle (C).



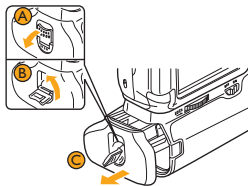
5. Remove the protective cap and connect the BG-C6 grip to the camera, while aligning the grip's mounting screw with the camera's tripod socket.



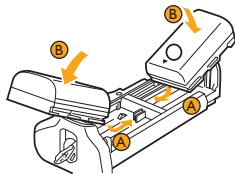
6. Rotate the attachment wheel in the direction shown by the arrow until it is firmly tightened.

When removing the grip, turn the camera power off, remove batteries, and replace protective contact cap.

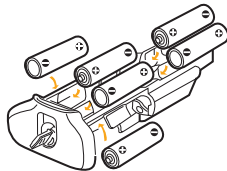
Inserting Batteries



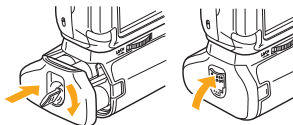
1. Ensure that the power is turned off on the camera and grip. Pull the lever down **A** and twist counter-clockwise **B** to open the battery chamber door. Press both release levers outward and remove the battery holder **C**.



2. **Canon LP-E6 Batteries:** Insert up to two batteries by orienting the arrow on the battery toward the interior of the holder. Press the front of the battery down **A** and slide forward while pressing on the back of the battery **B**.



3. **AA Batteries:** Place six new AA batteries of the same type into the AA battery holder as shown, while ensuring that they are in the correct orientation.

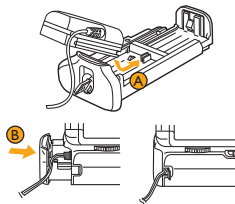


4. Slide the battery holder into the grip, twist the lever clockwise to lock, and flip it up to secure it.



5. Switch the grip power to ON and then turn on the camera's power. Check the battery level in the control panel or viewfinder.

Ensure that camera power is turned off before mounting DC coupler. Ensure that the DC cord doesn't get pinched by the battery holder.



6. Household Power Outlet: To mount the Canon ACK-E6 AC Power Adapter Kit (sold separately), insert the DC coupler into the side of the handler with the release lever just like a battery. Pass the cord through the groove on the back of the grip.

Specifications

Power Source	<ol style="list-style-type: none">1. One or two Canon LP-E6 rechargeable Li-ion batteries2. Six AA/LR6 Alkaline batteries3. Works with the Canon AC Adapter Kit (ACK-E6)
Operating Temperature	32° – 104° F (0 – 40° C)
Dimensions	5.7" × 4.4" × 3.4" (145.6 × 111.3 × 85.3 mm)
Weight	10.4 oz. (295 g) (excluding holder and batteries)

Specifications and design are subject to change without notice.

AA batteries do not provide as much shooting time as LP-E6 rechargeable batteries. Performance of AA batteries may also be dependent on brand and storage conditions. AA batteries may not function under 68° F (20° C).

Please note: When using the AA battery tray, the battery indicator will only work with Ni-MH batteries.

This product is not compatible with Duracell® brand alkaline batteries.

ONE-YEAR LIMITED WARRANTY

This VELLO product is warranted to the original purchaser to be free from defects in materials and workmanship under normal consumer use for a period of one (1) year from the original purchase date or thirty (30) days after replacement, whichever occurs later. The warranty provider's responsibility with respect to this limited warranty shall be limited solely to repair or replacement, at the provider's discretion, of any product that fails during normal use of this product in its intended manner and in its intended environment. Inoperability of the product or part(s) shall be determined by the warranty provider. If the product has been discontinued, the warranty provider reserves the right to replace it with a model of equivalent quality and function.

This warranty does not cover damage or defect caused by misuse, neglect, accident, alteration, abuse, improper installation or maintenance. EXCEPT AS PROVIDED HEREIN, THE WARRANTY PROVIDER MAKES NEITHER ANY EXPRESS WARRANTIES NOR ANY IMPLIED WARRANTIES, INCLUDING BUT NOT LIMITED TO ANY IMPLIED WARRANTY OF MERCHANTABILITY OR FITNESS FOR A PARTICULAR PURPOSE. This warranty provides you with specific legal rights, and you may also have additional rights that vary from state to state.

To obtain warranty coverage, contact the Vello Customer Service Department to obtain a return merchandise authorization ("RMA") number, and return the defective product to Vello along with the RMA number and proof of purchase. Shipment of the defective product is at the purchaser's own risk and expense.

For more information or to arrange service, visit www.vellogear.com or call Customer Service at 212-594-2353.

Product warranty provided by the Gradus Group.

www.gradusgroup.com

VELLO is a registered trademark of the Gradus Group. © 2015 Gradus Group LLC. All Rights Reserved.





© Copyright 2015 Gradus Group LLC
All other trademarks are the property of their respective owners
GG3