



# BG-P1

## BATTERY GRIP

Designed For The Panasonic  
Lumix GH3 and GH4



# Introduction

The BG-P1 accepts a DMW-BLF19PP battery to effectively double the runtime of your Panasonic Lumix GH3 or GH4 camera, making it easier to shoot for longer durations without replacing your camera's batteries.

The BG-P1 attaches securely to your camera's 1/4"-20 tripod socket, as nonslip rubber enhances your grip and handling when shooting in a vertical position. Alternate shutter-release, white balance, ISO, EV, and Fn buttons, plus front and rear command dials, make it comfortable to shoot in portrait orientation, so you won't have to twist your arm to get the right shot.

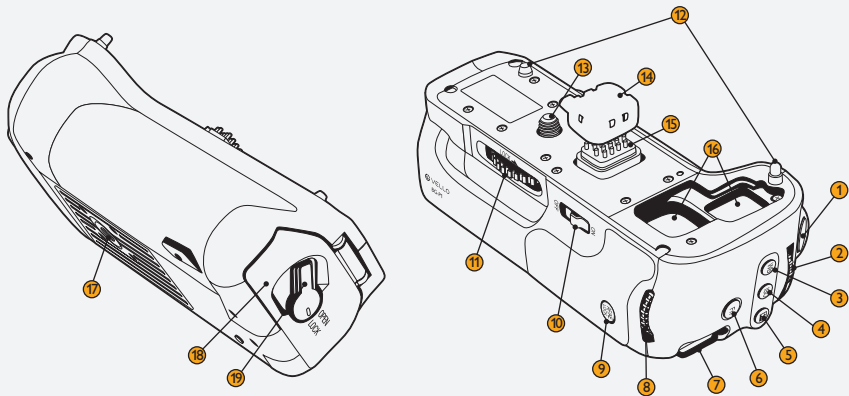
*Please read through this entire manual before using the BG-P1 battery grip.*



# Precautions

- 1.** The BG-P1 should be used with only the compatible devices and batteries specified in this manual.
- 2.** Cover the power terminal with the contact cap when the BG-P1 is not in use. This prevents electrical shorts caused by metal objects touching the power terminals.
- 3.** If you notice smoke, an unusual smell, or noise coming from the battery pack, discontinue use immediately. Remove the battery and contact the Vello Customer Service Department.
- 4.** Keep this product away from water and any flammable gases or liquids.
- 5.** Install batteries in the proper orientation. Installing batteries in the reverse orientation can cause them to leak, overheat, or explode.
- 6.** Do not attempt to disassemble or repair this product.
- 7.** Clean this product with only a soft, dry cloth.
- 8.** Keep this product away from children.
- 9.** Make sure that this product is intact and that there are no missing parts.
- 10.** To avoid damage to this product, be careful not to overtighten or improperly thread any of the threaded fittings.
- 11.** Remove the battery from the grip before long-term storage.
- 12.** All photos are for illustrative purposes only.

# Overview



① Shutter release button\*  
Two-stage shutter release.

② Front command dial\*

③ White-balance button\*

④ ISO button\*

⑤ EV button\*

⑥ Fn button

⑦ Strap mount

⑧ Rear command dial\*

⑨ AF/AE lock button\*

⑩ On/off switch  
Activates the BG-P1's controls. Your camera will continue to draw power from the BG-P1 when the switch is in the Off position. The on/off switch is not a power switch.

⑪ Locking wheel

⑫ Mounting pins

⑬ Mounting screw

⑭ Contact cap

⑮ Terminal contacts

⑯ Contact cap compartments

⑰ Tripod socket

⑱ Battery chamber  
Accepts one DMW-BLF19PP battery.

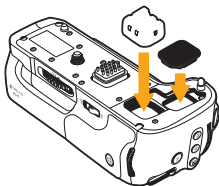
⑲ Battery chamber latch

*\* These controls perform the same function as their on-camera equivalents and are affected by changes to the Custom Settings menu. See your camera manual for details.*

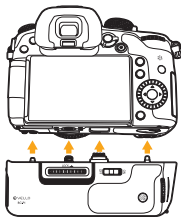
# Attaching The Grip



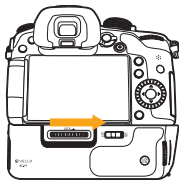
1. Make sure your camera is turned off.



2. Remove the middle rubber contact cap from the bottom of your camera and the plastic contact cap from the grip, and store them in the corresponding contact cap compartments in the battery grip.



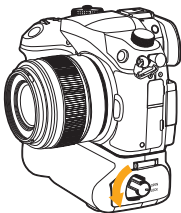
3. Align the grip's mounting screw, mounting pins, and contacts with their counterparts in your camera, and insert the grip into the camera.



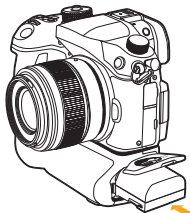
4. Rotate the grip's locking wheel in the direction of the arrow until the grip is firmly attached. Be careful not to overtighten.

*Tip: If you plan to use a single battery, we recommend inserting the battery into the grip (see Inserting a Battery on page 8) rather than into your camera. This way, you will be able to access the battery while the grip is installed.*

# Inserting A Battery

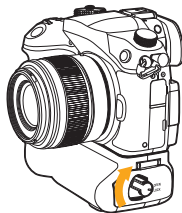


1. Slide the battery compartment latch to the Open position. The chamber door will automatically open.



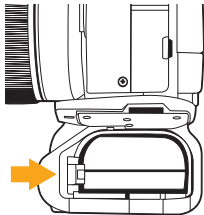
2. Insert the battery all the way into the battery chamber, until the battery locks into place.

*Note: If the battery is not in the correct orientation, you won't be able to insert it all the way, and the battery will not lock into place.*



3. Close the battery chamber door and slide the latch to the Lock position.





4. To remove the battery, open the battery chamber and pull the release lever.

*Note: When using two batteries, one installed in the camera and one in the grip, you can program your camera to draw power from one battery before the other. For more information on this feature, refer to your camera's instruction manual.*

# Using The Grip

All the controls on the BG-P1 will perform the same functions as the corresponding controls on your camera. For more information on their specific functions, refer to your camera's instruction manual.

The BG-P1's controls are ideal for shooting in portrait orientation and will work with your camera even if there is no battery installed in the grip. To activate the controls on the BG-P1, slide the on/off switch to the On position.

Deactivating the BG-P1's controls is ideal for shooting in landscape orientation, when you may inadvertently press one of the grip's buttons. To deactivate the controls, slide the on/off switch to the Off position.

*Note: The BG-P1's on/off switch will deactivate only the grip's controls. It will not turn off your camera or prevent it from drawing power from the BG-P1 if it is set to do so. To turn off your camera, use your camera's power switch.*

# Specifications

Power Source	One DMW-BLF19PP battery
Operating Temperature	32°F–104°F (0°C–40°C)
Operating Humidity Range	≤85%
Dimensions (W × H × L)	5.1" × 1.6" × 2.5" (13 × 4 × 6.3 cm)
Weight	Without battery: 6.6 oz. (188 g) With battery: 9.4 oz. (267 g)

# ONE-YEAR LIMITED WARRANTY

This VELLO product is warranted to the original purchaser to be free from defects in materials and workmanship under normal consumer use for a period of one (1) year from the original purchase date or thirty (30) days after replacement, whichever occurs later. The warranty provider's responsibility with respect to this limited warranty shall be limited solely to repair or replacement, at the provider's discretion, of any product that fails during normal use of this product in its intended manner and in its intended environment. Inoperability of the product or part(s) shall be determined by the warranty provider. If the product has been discontinued, the warranty provider reserves the right to replace it with a model of equivalent quality and function.

This warranty does not cover damage or defect caused by misuse, neglect, accident, alteration, abuse, improper installation or maintenance. EXCEPT AS PROVIDED HEREIN, THE WARRANTY PROVIDER MAKES NEITHER ANY EXPRESS WARRANTIES NOR ANY IMPLIED WARRANTIES, INCLUDING BUT NOT LIMITED TO ANY IMPLIED WARRANTY OF MERCHANTABILITY OR FITNESS FOR A PARTICULAR PURPOSE. This warranty provides you with specific legal rights, and you may also have additional rights that vary from state to state.

To obtain warranty coverage, contact the Vello Customer Service Department to obtain a return merchandise authorization ("RMA") number, and return the defective product to Vello along with the RMA number and proof of purchase. Shipment of the defective product is at the purchaser's own risk and expense.

For more information or to arrange service, visit [www.vellogear.com](http://www.vellogear.com) or call Customer Service at 212-594-2353.

Product warranty provided by the Gradus Group.

[www.gradusgroup.com](http://www.gradusgroup.com)

VELLO is a registered trademark of the Gradus Group. © 2014 Gradus Group LLC. All Rights Reserved.



[www.vellogear.com](http://www.vellogear.com)

© Copyright 2014 Gradus Group LLC  
All other trademarks are the property of their respective owners  
GG2