

# FREEWAVE MICRO

WIRELESS REMOTE  
SHUTTER RELEASE



USER'S MANUAL

## INTRODUCTION

Thank you for choosing the Vello FreeWave Micro Wireless Remote Shutter Release for Nikon. This compact set includes a small transmitter and a low-profile receiver that sits directly on the 10-pin remote terminal—it doesn't require a cable or take up space on the hot shoe. The FreeWave Micro wirelessly triggers the shutter of your Nikon DSLR camera from a distance of approximately 300' so that you can shoot action while keeping your distance from the camera setup. You can use any one of 16 selectable radio frequencies

(channels)—this ensures that you have a clear channel for operating your camera even if other wireless devices are operating in the same area.

The FreeWave Micro transmitter and receiver fit easily into a shirt pocket—together they weigh only 1.1 oz. The transmitter operates using one AAA battery. The receiver is powered by the camera.

Using the FreeWave Micro, you can activate autofocus, trigger the shutter, and open and close the shutter when your camera is in Bulb exposure mode. A shooting

alarm LED on the transmitter blinks red each time a picture is taken, so that you'll always know the exposure was made.

The FreeWave Micro also allows you to take photographs without touching your camera—a great advantage when doing close-up or macro photography, or when you're using long exposures. Using the FreeWave Micro, you won't risk accidentally moving your camera.

## KEY FEATURES

**Small, Lightweight Remote Control:** compatible with Nikon DSLRs with a 10-pin remote terminal.

**2.4 GHz Radio Frequency:** reduced interference and improved wireless signal quality.

**Extended Range:** operates at up to 328' (100 m), depending on conditions.

**16 Channels:** operates without interference from other wireless devices.

**Built-In Antenna:** improves reception of receiver.

**Dual-Function Release:** press release button halfway to activate autofocus; press fully to trip the shutter.

**Shutter Trigger Confirmation:** The red led ON light on the transmitter lights up each time the camera shutter is released, providing visual confirmation that a photograph has been taken.

**Bulb Mode Release:** when the camera is in Bulb mode, the FreeWave Micro remote control can open the shutter at the beginning of the exposure and close the shutter at the end of the exposure.

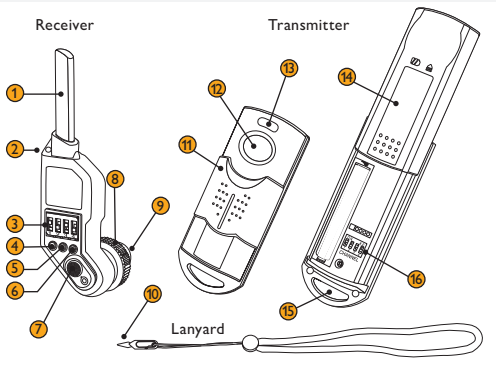
**LED Indicators:** LEDs indicate Focus, Shutter, and Shooting Confirmation.

**Works in Extreme Temperatures:** operates in temperatures from -4° to 122°F (-20° to 50°C).

## PRECAUTIONS

- There are no user-serviceable parts inside the devices. Do not attempt to disassemble or perform any unauthorized modification.
- Do not operate in the presence of flammable gas or vapors.
- Do not handle with wet hands or immerse in or expose to water or rain. Failure to observe this precaution can result in fire or electric shock.
- Observe caution when handling batteries. Batteries may leak or explode if improperly handled. Use only the batteries listed in this manual. Make certain to align batteries with correct polarity.
- Batteries are prone to leakage when fully discharged. To avoid damage to the product, be sure to remove the batteries when leaving the product unattended for prolonged periods or when no charge remains.
- Do not use or leave the devices in conditions of extreme heat, severe cold, or high humidity.
- Dispose of used batteries, packaging, and old devices in accordance with appropriate local environmental regulations.
- Do not attempt to disassemble or repair the equipment—doing so will void the warranty, and Vello will not be responsible for any damage.
- Handle the unit with care.
- Keep out of the reach of children. This device contains small parts which may pose a choking hazard.
- Make sure the item is intact and that there are no missing parts.
- All photos are for illustrative purposes only.
- Please read and follow these instructions and keep this manual in a safe place.

## FEATURES DIAGRAM



- ① Antenna
- ② Lanyard hook
- ③ 16-channel switch
- ④ Power LED
- ⑤ Focus LED
- ⑥ Shutter LED
- ⑦ Power switch
- ⑧ Locking wheel
- ⑨ 10 pin connection to the camera.
- ⑩ Channel selection pin
- ⑪ Protective sliding cover
- ⑫ Shutter release button
- ⑬ LED Indicator  
Focus—vivid blue / Shutter—dim blue / Shooting alarm—red
- ⑭ Battery compartment door
- ⑮ Strap hook
- ⑯ 16-channel switch

## INSTRUCTIONS

To get the most from your FreeWave Micro Wireless Remote Control, please read this manual.

### Setting Up the Receiver

The camera must have a 10-pin remote terminal in order to connect with the FreeWave Micro Wireless Receiver. Please see the compatible camera list on page 12.

1. Insert the socket of the receiver, with the antenna pointed up, into the camera's 10-pin remote terminal.
2. Turn the receiver slightly until you feel that it's seated properly in the terminal.
3. When you have correctly aligned the receiver with the 10-pin remote terminal, turn the locking wheel clockwise until the receiver is securely connected to the camera.



4. Turn the receiver on by pressing the power button.
5. The red Power LED on the receiver will blink on and off when the receiver is connected properly to the camera.
6. Ensure that the receiver is set to the same channel as the transmitter.



7. To turn the receiver off, press the power switch and hold it for approximately one second. The red Power LED will turn off.

**Note:** The receiver will enter sleep mode after it has been on for two hours without being activated. When the receiver is in sleep mode, press the On switch to resume operation.

## Setting Up the Transmitter

Please follow these directions to set up the transmitter.

1. Press down on the knurled area on the back of the transmitter and slide open the battery chamber cover.
2. Install one AAA battery in the battery chamber, ensuring that the polarity is correct.
3. Using the included channel selection pin (attached to the lanyard), select the channel using the selector next to the battery. Be sure the channel matches the channel setting on the receiver.



4. Slide the battery chamber cover closed.
5. To activate autofocus, press the shutter button on the transmitter halfway down. When autofocus is engaged, the indicator LED will become a vivid blue color.
6. To trigger the shutter and take a photograph, press the shutter button all the way down. When the shutter is engaged, the indicator LED will turn a dim blue color.

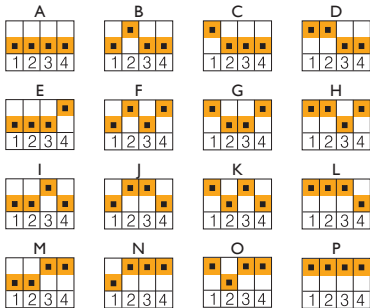


## SETTING THE CHANNEL

There are 16 radio frequencies (channels) available on the transmitter and the receiver. Be sure to set the same channel on the transmitter and the receiver. This allows you to use the Freewave Micro Wireless Remote Control without interference from other devices using radio frequencies in the same area. The channel selection pin attached to the included lanyard helps you to adjust the channels. Please refer to the channel list below for information about setting the channels.

**Note:** Be sure to maintain a minimum distance of 20" (50 cm) between the transmitter and receiver during operation to prevent anti-RF interference.

### Available Channels



## USING THE FREEWAVE MICRO WIRELESS REMOTE SHUTTER RELEASE FOR NIKON

After you attach the receiver to your camera, you can use the FreeWave Micro to activate the autofocus function, to release the shutter, and to operate the Bulb mode on your camera.

To operate the autofocus function on your camera, press the shutter button on the transmitter halfway down. When the autofocus is engaged, the blue LED on the transmitter and the blue LED on the receiver will both light up. To take a photograph, press the shutter button all the way down. The red LED on the receiver and the red shooting

alarm LED on the transmitter will light up to confirm that the receiver is functioning and that it has triggered the shutter in the camera. The confirmation light may not blink at the precise moment that the photograph is taken.

To use the FreeWave Micro with the Bulb mode on your camera, first set your camera to Bulb mode. Then, press the shutter button on the transmitter and hold it until the blue LED on the transmitter turns off. A blue LED and a red LED on the receiver will light up, signaling that the shutter

of the camera is open. When you want to close the shutter, press the shutter button on the transmitter again. The blue and red lights on the receiver will go out, signaling that the shutter has closed.

## TROUBLESHOOTING

Transmitter	Receiver
Transmitter light does not blink	Insert a fresh battery into the battery chamber, ensuring that the polarity is correct.
Transmitter light blinks, but receiver light does not blink	Check to be sure that the power switch for the receiver is in the On position. Ensure that the receiver and transmitter are set to the same channel.
Status LED on transmitter blinks at incorrect times	Insert a fresh battery into the battery chamber, ensuring that the polarity is correct.
Status LED on the receiver blinks, but the camera doesn't operate	Remove receiver from camera and reinstall it, ensuring that it's securely attached.

## COMPATIBLE CAMERAS

**Nikon®** D1 / D1H / D1X / D2 / D200 / D2H /  
D2Hs / D2x / D2Xs / D3 / D300 / D300s /  
D3s / D3x / D4 / D4s / D700 / D800 /  
D800e / D810

**Fuji®** S5 Pro / S3 Pro

**Kodak®** DCS-14N



## SPECIFICATIONS

	Transmitter	Receiver
<b>Frequency</b>	2.427 GHz to 2.457 GHz	
<b>Channels</b>	16	
<b>Maximum Range</b>	328' (100 m)	
<b>Battery</b>	1x AAA	Powered by camera
<b>Operating Temperature Range</b>	-4 to 122°F (-20 to 50°C)	
<b>Dimensions</b>	2.83 × 0.86 × 0.90" (82 × 34 × 17 mm)	2.75 × 1.33 × 0.67" (70 × 22 × 23 mm)
<b>Weight</b>	0.7 oz. (19.8 g) without battery	0.4 oz. (11.3 g)
<b>Total Weight</b>	1.5 oz. (42.5 g)	

## FCC COMPLIANCE

This device complies with Part 15 of the FCC Rules. Operation is subject to the following two conditions:

1. This device may not cause harmful interference.
2. This device must accept any interference received, including interference that may cause undesired operation.

## ONE-YEAR LIMITED WARRANTY

This VELLO product is warranted to the original purchaser to be free from defects in materials and workmanship under normal consumer use for a period of one (1) year from the original purchase date or thirty (30) days after replacement, whichever occurs later. The warranty provider's responsibility with respect to this limited warranty shall be limited solely to repair or replacement, at the provider's discretion, of any product that fails during normal use of this product in its intended manner and in its intended environment. Inoperability of the product or part(s) shall be determined by the warranty provider. If the product has been discontinued, the warranty provider reserves the right to replace it with a model of equivalent quality and function.

This warranty does not cover damage or defect caused by misuse, neglect, accident, alteration, abuse, improper installation or maintenance. EXCEPT AS PROVIDED HEREIN, THE WARRANTY PROVIDER MAKES NEITHER ANY EXPRESS WARRANTIES NOR ANY IMPLIED WARRANTIES, INCLUDING BUT NOT LIMITED TO ANY IMPLIED WARRANTY OF MERCHANTABILITY OR FITNESS FOR A PARTICULAR PURPOSE. This warranty provides you with specific legal rights, and you may also have additional rights that vary from state to state.

To obtain warranty coverage, contact the Vello Customer Service Department to obtain a return merchandise authorization ("RMA") number, and return the defective product to Vello along with the RMA number and proof of purchase. Shipment of the defective product is at the purchaser's own risk and expense.

For more information or to arrange service, visit [www.vellogear.com](http://www.vellogear.com) or call Customer Service at 212-594-2353.

Product warranty provided by the Gradus Group.

[www.gradusgroup.com](http://www.gradusgroup.com)

VELLO is a registered trademark of the Gradus Group.

© 2014 Gradus Group LLC. All Rights Reserved.





[www.vellogear.com](http://www.vellogear.com)

© Copyright 2014 Gradus Group.

All other trademarks are the property of their respective owners

GG2