

Vivitar®

accessories

DSLR TTL Flash / Video Light



VIV-DF-7000

User's Manual

Vivitar One year Warranty

This warranty covers the original consumer purchaser only and is not transferable.

This warranty covers products that fail to function properly UNDER NORMAL USAGE, due to defects in material or workmanship. Your product will be repaired or replaced at no charge for parts or labor for a period of one year.

What Is Not Covered by Warranty

Damages or malfunctions not resulting from defects in material or workmanship and damages or malfunctions from other than normal use, including but limited to, repair by unauthorized parties, tampering, modification or accident.

To obtain Warranty Service and Troubleshooting information:

Call 1-800-592-9541 in the U.S. or 0-800-917-4831 in the UK or Visit our website at www.vivitar.com.

To receive Warranty service along with the name and address of an authorized product service center, the original consumer purchaser must contact us for problem determination and service procedures. Proof of purchase in the form of a bill of sale or receipted invoice, evidencing that the Product is within the applicable Warranty period(s), MUST be presented in order to obtain the requested service. It is your responsibility to properly package and send any defective products along with a dated copy of proof of purchase, a written explanation of the problem, and a valid return address to the authorized service center at your expense. Do not include any other items or accessories with the defective product. Any products received by the authorized service center that are not covered by warranty will be returned unrepairs.

Vivitar One year Warranty (continued)

NO WARRANTIES, WHETHER EXPRESS OR IMPLIED, INCLUDING, BUT NOT LIMITED TO, ANY IMPLIED WARRANTIES OF MERCHANTABILITY OR FITNESS FOR A PARTICULAR PURPOSE, OTHER THAN THOSE EXPRESSLY DESCRIBED ABOVE SHALL APPLY. DISTRIBUTOR FURTHER DISCLAIMS ALL WARRANTIES AFTER THE EXPRESS WARRANTY PERIOD STATED ABOVE. NO OTHER EXPRESS WARRANTY OR GUARANTY GIVEN BY ANY PERSON, FIRM OR ENTITY WITH RESPECT TO THE PRODUCT SHALL BE BINDING ON DISTRIBUTOR. REPAIR, REPLACEMENT, OR REFUND OF THE ORIGINAL PURCHASE PRICE - AT DISTRIBUTOR'S SOLE DISCRETION -ARE THE EXCLUSIVE REMEDIES OF THE CONSUMER. IN NO EVENT WILL DISTRIBUTOR, ITS MANUFACTURERS, OR SAKAR INT. BE LIABLE FOR ANY INCIDENTAL, DIRECT, INDIRECT, SPECIAL, PUNITIVE OR CONSEQUENTIAL DAMAGES (SUCH AS, BUT NOT LIMITED TO, DAMAGES FOR LOSS OF PROFITS, BUSINESS, SAVINGS, DATA OR RECORDS) CAUSED BY THE USE, MISUSE OR INABILITY TO USE THE PRODUCT. EXCEPT AS STATED HEREIN, NO OTHER WARRANTIES SHALL APPLY. NOTWITHSTANDING THE FOREGOING, CONSUMER'S RECOVERY AGAINST DISTRIBUTOR SHALL NOT EXCEED THE PURCHASE PRICE OF THE PRODUCT SOLD BY DISTRIBUTOR. THIS WARRANTY SHALL NOT EXTEND TO ANYONE OTHER THAN THE ORIGINAL CONSUMER WHO PURCHASED THE PRODUCT AND IS NOT TRANSFERABLE.

Some countries, states or provinces do not allow the exclusion or limitation of incidental or consequential damages or allow limitations on warranties, so limitation or exclusions may not apply to you. This warranty gives you specific legal rights, and you may have other rights that vary from state to state or province to province. Contact your authorized retailer to determine if another warranty applies. This product is manufactured, distributed and sold by SAKAR International, Inc. All other trademarks are the property of the respective owner, who has not sponsored, endorsed or approved this product.

Introduction

Congratulations on your purchase of the Vivitar VIV-DF-7000 flash unit. This electronic flash is innovatively designed for digital cameras and film cameras, with advanced technology used to control the correct amount of light output. Please kindly take a few minutes to read this instruction manual before using.

Compatibility

The VIV-DF-7000 flash comes in different varieties, each compatible with different cameras. Check to make sure the flash that you have is compatible with your camera.

VIV-DF-7000-CAN - Canon Digital E-TTL, E-TTL II cameras & E-TT film cameras

VIV-DF-7000-NIK - Nikon Digital TTL, i-TTL Cameras & TTL, i-TTL film cameras

VIV-DF-7000-SON - Sony Alpha & Minolta Digital ADI, D Lenses cameras & TTL film cameras

Important Safety Instructions

- This flash unit does not function on camcorders.
- Misfiring sometimes occurs when the power switch is turned on and off continuously. If this happens, power off the flash for a few seconds before switching it on again. The flash unit will then work normally.
- Do not leave or store the flash unit in temperatures that exceed 40°C. Doing so might adversely affect the internal structure or performance of the flash unit. Particularly, do not leave the flash unit in an automobile during the summer.
- Remove the batteries if you do not intend to use your flash unit for a long period of time.
- The flash unit is not water-resistant. Rain and humid weather may cause irreparable damages to the flash.
- The flash unit is composed of very delicate electronic parts. It should be protected against shocks, falls or other improper handling.
- The flash unit contains a high voltage condenser. Do not try to open the housing or repair the flash.
- Do not clean the surface of the flash unit by using any petrol, detergent solution or strong solvents. These solvents may cause damages to the flash.

Warning

Note: This flash unit may freeze up and stop functioning properly when there is insufficient battery power or when the unit is used incorrectly. Always use the ON/OFF switch to power off your flash. Once powered off, wait for several seconds and then replace the batteries when they are drained. Your flash should begin working normally once the batteries are replaced.

Features of Your Flash

- TTL metering
- Automatic shutter speed setting
- Flash readiness indication
- Front and rear curtain synchronization
- Integrated LED video light
- Power saving function
- 6 levels of power ratio: 1/1, 1/2, 1/4, 1/8, 1/16 and 1/32

Specifications

Flash

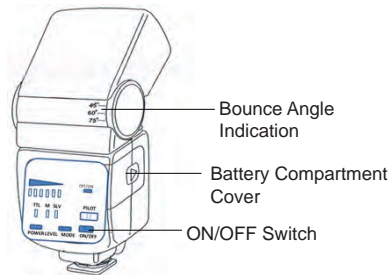
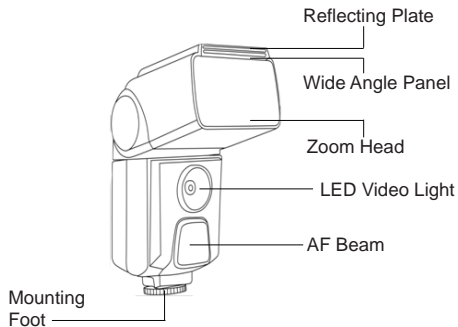
Guide No.(ISO 100)	50(m) at 105mm position
Flash Head	28-35-50-105mm
Bounce Angle	0, 45, 60, 75, 90
Swivel Angle	Right 0 -90; Left 0 - 180
Power Source	Four 1.5V AA size batteries (R6, LR6)
Recycling time	0.5 – 8 sec
Dimensions	Approx.40(W) x 70(D) x 170(H) mm
Weight (w/o battery)	Approx.260g

LED Light

Power 1 x 3W

NOTE: Specifications and design are subject to change without prior notice.

A Quick Look at Your Device



MOUNTING FOOT

For Canon & Nikon Cameras

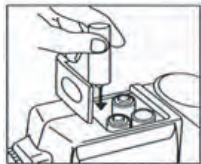


For Sony Cameras



Loading Batteries Into Your Flash

- Make sure the ON/OFF switch is in the “OFF” position.
- Slide the battery compartment cover forward and swing it open.
- Insert batteries according to the indicated “+/-” symbols.
- Close the compartment cover and slide it back so that it locks in place
- All batteries must be of the same make and have the same charge level; alkaline batteries are preferable.



Mounting Your Flash Onto Your Camera

-For Canon & Nikon Flashes: Loosen the lock ring on your flash's mounting foot. Insert the mounting foot into camera's hot shoe. Tighten the flash unit with the lock ring.

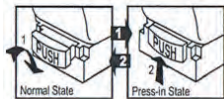
-For Sony Flashes: Make sure the PUSH on the mounting foot is not pressed in. Insert the mounting foot into the camera's hot shoe. The safety catch can be heard to snap into place onto the hot shoe.



Removing the Flash from your Camera

-For Canon and Nikon Flashes: Loosen the lock ring and remove the flash by pulling it backwards.

-For Sony Flashes: Push the Shoe Release Button (the button marked “PUSH”) and simultaneously pull the flash off by pulling it backwards.



Turning Your Flash ON or OFF & Testing the Flash Functions

To power on your flash unit, press and hold the ON/OFF button for 2-3 seconds. The “PILOT” indicator light will turn green when the flash unit is ready to fire. To fire a test flash press the PILOT button and a flash should fire. Once the flash unit discharges completely after it has been fired, wait until the “PILOT” indicator turns green again until you can fire another flash.

To check the video light function, slide the LED ON/OFF switch to the “ON” position and the LED Video light should turn on. To switch off the flash unit, slide the main switch to the “OFF” position

Using the Integrated LED Video Light

An LED video light is built into your flash. This light is primarily useful for taking videos with your digital SLR camera. The light allows you to record video in low light conditions. It is composed of 1 LED with 3 watts of power. To turn on the LED video light, just slide the LED ON/OFF switch to the “ON” position. The video light will then be switched on. It is not recommended to turn on the LED video light during a photo shoot.

Using the Flash Function

AUTOMATIC FLASH SYNC SPEED CONTROL

When your flash unit is ready for shooting photos, it will automatically match the camera's shutter speed. The flash readiness indicator will appear on the camera. Different camera models indicate flash readiness in different ways (see your camera's manual).

Point the camera at the subject and focus. Gently press the shutter button on the camera to check the image. Then press the shutter button firmly. The Auto OK indicator will light when the picture is exposed correctly.

TTL

This flash unit performs pre-flashes so that the camera can calculate the intensity of flash light output. The flash light output is controlled precisely by the camera.

Manual Exposure Flash

There are some occasions when you may want to set your own flash exposure instead of using automatic controlled exposure. You can set flash for non-automatic flash mode, and select the desired flash power from 6 different levels.

- 6 orange colored LEDs display the flash power level.
- You can select the power, from the left to right, 1/1 (full) – $\frac{1}{2}$ - $\frac{1}{4}$ - $\frac{1}{8}$ – $\frac{1}{16}$ – $\frac{1}{32}$.
- Set the camera shooting mode to either [AV] (Canon), [A] (Nikon), or [M].
- Select your desired F-stop and/or shutter speed. Point your camera at the subject you are shooting and press the shutter button.

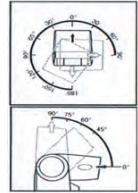
Wireless Remote Flash

Your flash has a wireless remote flash system as a slave unit. You can enjoy creative flash photography with multiple lighting sources from the various directions.

Your flash synchronizes to any flash produced by the master flash (either the camera's built-in flash or the camera manufacturer's original flash on the camera). To use this feature, make sure your flash's mode switch is set to Slave Mode.

Bounce and Swivel Flash

Using direct flash to illuminate a subject will result in harsh, unnatural and unattractive shadows. This can be avoided by using bounce and/or swivel flash. The flash head can be tilted to angles of 45°, 60°, 75° or 90° and horizontally rotated 180° to the left and 90° to the right. You can tilt or rotate the flash head to bounce the light off the ceiling or walls. While shooting indoors, this technique can help to create more natural looking pictures of people with softer shadows.



In order to have your pictures correctly exposed when using bounce or swivel flash, the following is recommended to users:

- (1) Select white or reflective surfaces to bounce the light off. Otherwise your pictures will come with an unnatural color similar to that of the reflecting surface.
- (2) Set the camera's exposure mode to Aperture Priority ("A") or Manual ("M").
- (3) Use a wider aperture than normal, as 2 or 3 stops of light can be lost when using bounce or swivel flash

Red Eye Reduction

Red-eye reduction function reduces the red-eye phenomenon by emitting pre-flashes before the main flash. To set up this function, please refer to your camera's instruction manual. (Note: this feature may not be available for all camera models.)

Zoom Head

The zoom flash head covers focal lengths of 28-35-50-105mm in four stops. To choose these positions, simply move the flash head as shown. It is important that the flash unit is set to a focal length equal to or wider than the camera lens focal length to assure proper coverage.



Built-In Reflecting Plate & Wide Panel

This flash unit has built-in reflecting plate and wide panel. You can slide out the reflecting plate or wide panel from the top of the flash head. Bouncing the flash head and using the reflecting plate can help to create more natural-looking pictures of people with softer shadows. The wide panel can extend the coverage of the flash unit.

Front and Rear Curtain Synchronization

Some cameras offer the option of rear curtain synchronization (Rear mode) triggering the flash unit at the end of the exposure time. Rear curtain synchronization is particularly advantageous when using slow shutter speeds (slower than 1/30 sec) or when shooting moving objects that have their own source of light. Rear curtain synchronization gives a more realistic impression of movement because the light streaks behind the light source instead of building up in front of it, as is the case when the flash is synchronized with the front shutter curtain. Depending on its operation mode, the camera uses shutter speeds slower than its sync speed

For Canon, Nikon, Sony flashes: The camera controls front or rear-curtain synchronization, therefore no setting is required to be done on the flash.

Note: The rear curtain synchronization is only possible on cameras with this feature. See your camera's instruction manual for details.

Power Save Mode

If there is no communication between this flash unit and the camera for around 3 minutes, the flash unit will automatically be switched to power save mode in order to save battery power. The Ready light will be off while in this mode.

To reactivate the flashgun, simply press the camera's shutter or switch the main switch off and on again. The flash unit is not completely switched off in power save mode. However, power consumption is drastically reduced. If you are not going to use the flash unit for a while, we recommend you to turn it off.

Vivitar