

EHD-3.5

External 3.5" SATA HDD Enclosure

User Manual



Thank you for choosing Xcellon.

The Xcellon EHD-3.5 SATA Hard Drive Dock is the most convenient way to access data on an internal SATA drive—instead of dismantling your computer and installing the drive, you simply insert the drive into the enclosure and attach it to your computer via one of the included high-speed connection cables.

The EHD-3.5 accommodates a single 3.5" SATA hard-disk drive. USB 3.0 and eSATA ports provide optimal compatibility for connecting to your computer. The enclosure can attain maximum transfer rates of up to 5.0 Gbps via the USB 3.0 port, which supports plug-and-play.

The EHD-3.5 includes all necessary interface cables and is compatible with Windows and Mac operating systems.

Precautions ⚠

- Please read and follow these instructions, and keep this manual in a safe place.
- Back up your data before using this product in order to prevent loss of important data. Xcellon will not be responsible for any data loss.
- Keep this product away from liquids.
- Use only the correct, recommended voltage.
- Handle this product with care.
- Clean this product with only a soft, dry cloth.
- Keep this product away from children.
- Do not store this product in direct sunlight or in extreme high or low temperatures.
- All photos are for illustrative purposes only.

Specifications

- Internal Interface: SATA
- External interface:
 - eSATA: 1
 - USB 3.0 Type B: 1
- System requirements
 - Available eSATA or USB port on the computer
 - Windows 98/ME/2000/XP/Vista/7/8, Mac OS X 10.4 or above
- Drives supported: 3.5" SATA I/II/III type hard disk drive (HDD)

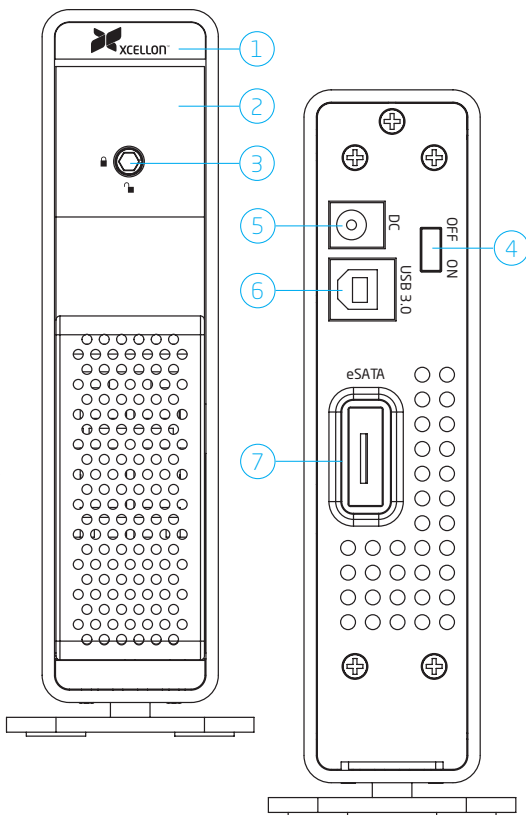
Overview

Front:


1. HDD status LED
 2. HDD door
 3. Safety lock
- Rear:
4. Power switch
 5. DC power port
 6. USB 3.0 port
 7. eSATA port

Also included:

- eSATA cable
- USB 3.0 cable
- DC power supply
- Hex key
- User manual



Getting Started

1. Make sure the Power switch is in OFF position.
2. If necessary, use the included hex key to unlock and open the HDD doors.
3. Align the SATA contacts on your disk drive with those in the enclosure, and fully insert the drive into the enclosure.
4. Close the HDD door all the way so it latches into place, and use the included hex key to lock the door.
5. Select the cable you want to use from among the two included interface cables (eSATA or USB 3.0) and use it to connect the EHD-3.5 to the corresponding port on your computer.
 If your computer has both an eSATA and a USB port, do not plug the enclosure into both ports. Choose one or the other.
6. Use the included power adapter to connect the EHD-3.5 to an AC power source.
7. Slide the Power switch to the ON position to turn on the EHD-3.5. As the EHD-3.5 powers on, the HDD status LED will glow blue. It may also flash blue and red, which occurs during read/write operations.

If your disk drive has been formatted, your computer will notify you that new hardware has been detected, and the drive will appear on the Desktop, in My Computer, or in the Finder.

If the drive has not been formatted, or if your computer cannot read or recognize it, you may need to format the drive. See [Formatting Your Disk Drive](#) on page 4.

Removing Your Disk Drive



To prevent data loss, do not unplug the EHD-3.5, turn it off, or remove your disk drive from the enclosure until all steps have been completed.

Windows

1. Close any programs that might be using the drive.
2. Right-click on the mobile hardware icon in the right-hand corner of the task bar.
3. Select the hard-drive enclosure from the list of devices to safely remove it.
4. After the computer indicates that it is safe to remove the device, slide the Power switch to its OFF position to turn off the EHD-3.5.
5. Use the included hex key to unlock the HDD door. Open the door and remove the disk drive from the enclosure.

Mac

1. Click on the eject symbol next to the device's icon in the Finder.
2. After the device disappears from the Finder, use the included hex key to unlock the HDD door. Open the door and remove the disk drive from the enclosure.

Formatting Your Disk Drive

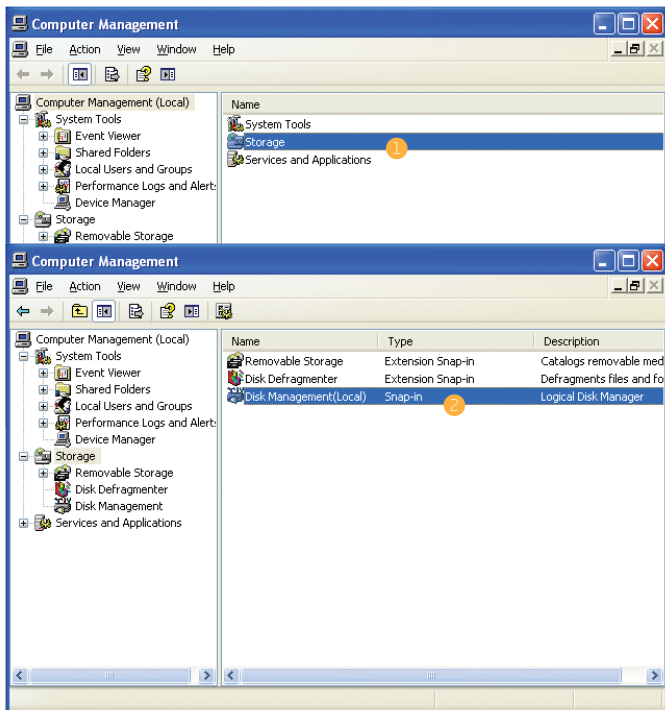
If your disk drive has not been formatted, or if your computer cannot read or recognize it, then you may need to format the drive. Keep in mind that formatting a drive will erase all of its data. If you have data on your drive, make sure to back it up before formatting.



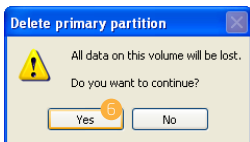
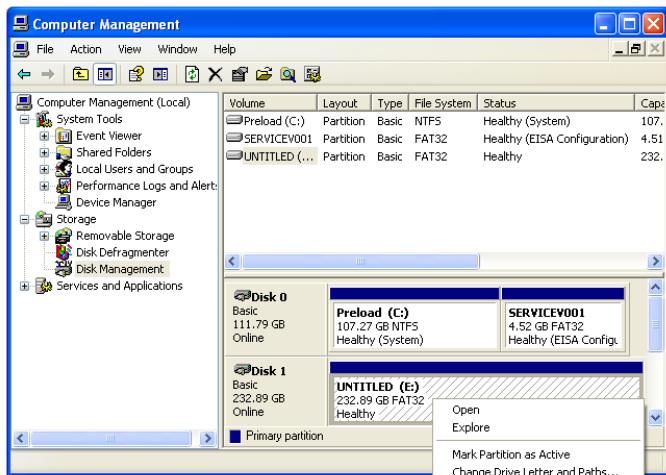
The Windows XP and Vista 32-bit operating systems each have a maximum drive capacity of 2 TB.

Windows XP

1. Right-click on My Computer and select "Manage." In the right column of the Computer Management window, double-click on "Storage."
2. Click on "Disk Management (Local)."



3. In the bottom half of the right column, you will see a list of the connected disk drives and their partitions. Formatted drives have a blue bar, and unformatted drives have a black bar and are labeled "Unallocated."
4. If your disk is unformatted, skip to step #6.
5. If your disk is partitioned and formatted, right-click the partition labeled "Primary partition" and select "Delete Partition."
6. Confirm your selection in the dialog box that follows. Windows will delete the partition, and the box that was labeled "Primary partition" will now be labeled "Unallocated."



7. Right-click on the partition labeled "Unallocated" and click on "New Partition." This will open the New Partition Wizard.
8. When the New Partition Wizard opens, click on "Next" to continue.
9. In the Select Partition Type window, select "Primary partition." Click on "Next" to continue.
10. In the Specify Partition Size window, make sure the maximum disk space in megabytes (MB) is the same as the partition size in MB, in order to make a whole-drive partition. Click on "Next" to continue.
11. In the Assign Drive Letter or Path window, select a letter from the drop-down menu to assign to the disk drive. Click on "Next" to continue.
12. In the Format Partition window, select "Format this partition with the following settings."
 - a. From the "File system" drop-down menu, select the file system you want to use for the disk.
 - b. Set "Allocation unit size to "Default."
 - c. Type in a name for the disk in the "Volume label" text entry box. The default disk name is "New Volume."
 - d. You can opt to perform a quick format or a full format.
 - e. Make sure "Enable file and folder compression" is unselected.
 - f. Click on "Next" to continue.
13. Review your settings and click on "Finish." Windows will format the partition, which will appear as formatted in the Computer Management window, and the disk will appear as a usable drive in My Computer.

New Partition Wizard

Select Partition Type
There are three types of partitions: primary, extended, and logical.

Select the partition you want to create:

☒ Primary partition 9
☐ Extended partition
☐ Logical drive

Description
A primary partition is a volume that Windows and other operating systems can create up to four primary partitions.

Specify Partition Size
Choose a partition size that is between the maximum and minimum sizes.

Maximum disk space in megabytes (MB): 238473
 Minimum disk space in MB: 8
 Partition size in MB: 10

New Partition Wizard

Assign Drive Letter or Path
For easier access, you can assign a drive letter or drive path to your partition.

☒ Assign the following drive letter: 11
☐ Mount in the following folder:
☐ Do not assign a drive letter

New Partition Wizard

Format Partition
To store data on this partition, you must format it first.

Choose whether you want to format this partition, and if so, what settings you want to use.

☐ Do not format this partition
☒ Format this partition with the following settings: 12

File system:
 Allocation unit size:
 Volume label:

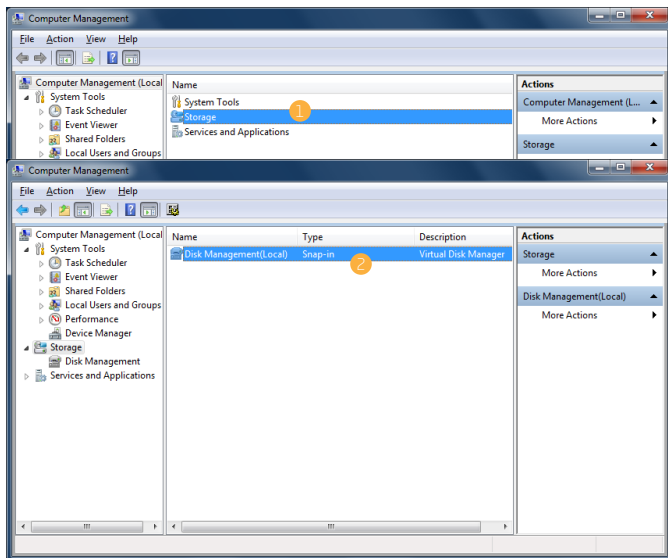
☐ Perform a quick format
☐ Enable file and folder compression

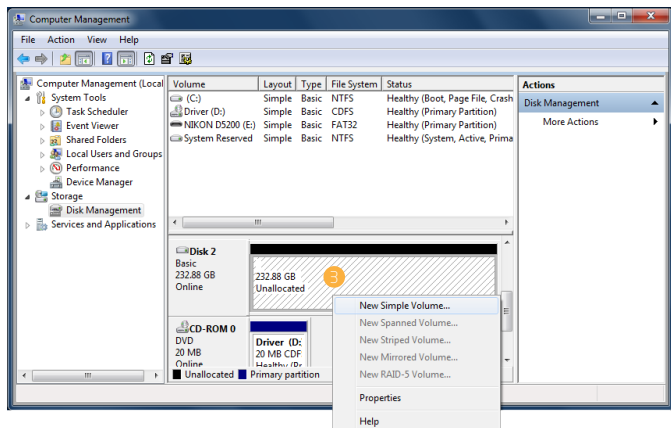
< Back Next > Cancel

Windows Vista / 7 / 8

These instructions will help create a formatted, whole-drive partition.

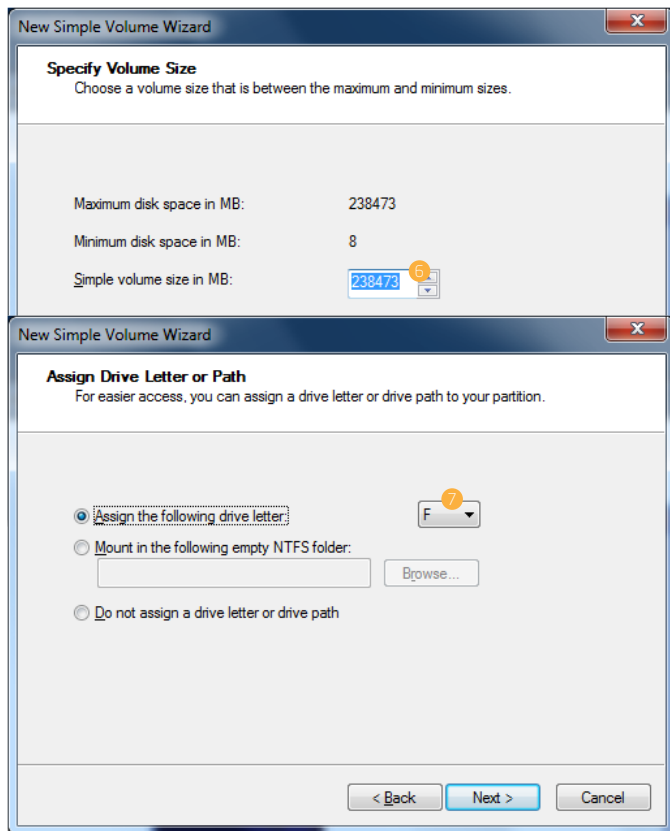
1. Right-click on My Computer and select "Manage." In the middle column of the Computer Management window, double-click on "Storage."
2. Click on "Disk Management."
3. In the bottom half of the middle column, you will see a list of all the connected disk drives and their partitions. Formatted drives have a blue bar, and unformatted drives have a black bar and are labeled "Unallocated."
4. Right-click on the partition labeled "Unallocated" and click on "New Simple Volume." This will open the New Simple Volume Wizard.





5. When the New Simple Volume Wizard opens, click on "Next" to continue.
6. In the Specify Volume Size window, make sure the maximum disk space in MB is the same as the simple volume size in MB, in order to make a whole-drive partition. Click on "Next" to continue.
7. In the Assign Drive Letter or Path window, select a letter from the drop-down menu to assign to the disk drive. Click on "Next" to continue.
8. In the Format Partition window, select "Format this volume with the following settings:"
 - a. From the "File system" drop-down menu, select the file system you want to use for the disk.
 - b. Set "Allocation unit size to "Default."
 - c. Type in a name for the disk in the "Volume label" text entry box. The default disk name is "New Volume."
 - d. You can opt to perform a quick format or a full format. "Perform a quick format" is the default option.

- e. Make sure "Enable file and folder compression" is unselected.
- f. Click on "Next" to continue.



New Simple Volume Wizard

Specify Volume Size
Choose a volume size that is between the maximum and minimum sizes.

Maximum disk space in MB: 238473

Minimum disk space in MB: 8

Simple volume size in MB: 238473

New Simple Volume Wizard

Assign Drive Letter or Path
For easier access, you can assign a drive letter or drive path to your partition.

☒ Assign the following drive letter:

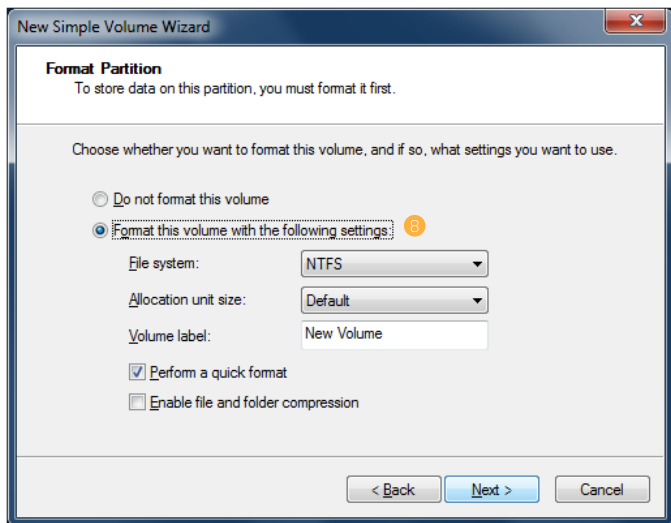
☐ Mount in the following empty NTFS folder:

☐ Do not assign a drive letter or drive path

F

Browse...

< Back Next > Cancel

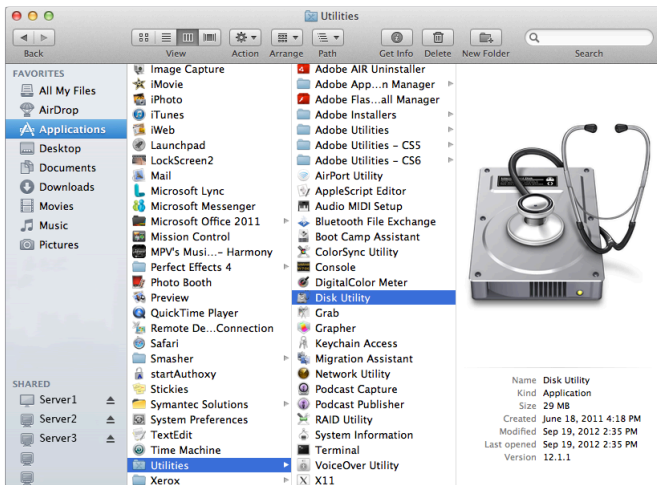


9. Review your settings and click on "Finish." Windows will format the partition, which will appear as formatted in the middle column of the Computer Management window. The disk will appear as a usable drive in My Computer.

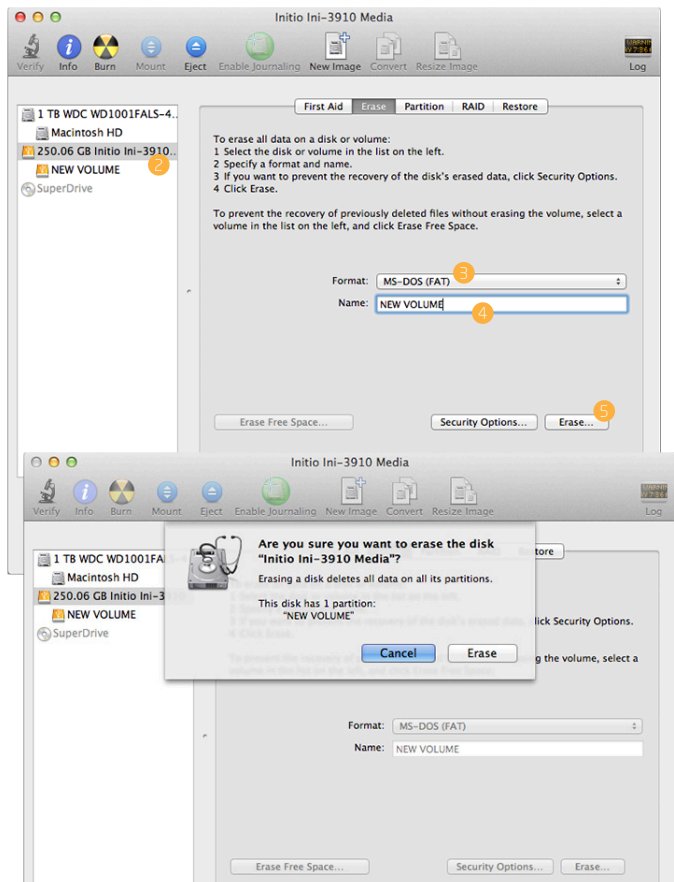
Mac OS X

1. If your disk drive is unformatted, a dialog box will appear stating that the computer cannot read the disk. Click on "Initialize" to open the Disk Utility application.

Alternatively, you can go to Applications/Utilities/Disk Utility.



2. In the left column of the Disk Utility Window, you will see a list of connected disk drives. Select the disk you want to erase and click on the "Erase" tab in the right-hand column.
3. From the "Format" drop-down menu, select the file system you want to use for the disk.
4. Type in a name for the disk in the "Name" text entry box. The default disk name is "Untitled."
5. Click on the "Erase" button and confirm your selection in the dialog box that follows. Mac OS will format the disk, and it will appear in the Finder under the "Devices" category.



One-Year Limited Warranty

This Xcellon product is warranted to the original purchaser to be free from defects in materials and workmanship under normal consumer use for a period of one (1) year from the original purchase date or thirty (30) days after replacement, whichever occurs later. The warranty provider's responsibility with respect to this limited warranty shall be limited solely to repair or replacement, at the provider's discretion, of any product that fails during normal use of this product in its intended manner and in its intended environment. Inoperability of the product or part(s) shall be determined by the warranty provider. If the product has been discontinued, the warranty provider reserves the right to replace it with a model of equivalent quality and function.

This warranty does not cover damage or defect caused by misuse, neglect, accident, alteration, abuse, improper installation or maintenance. EXCEPT AS PROVIDED HEREIN, THE WARRANTY PROVIDER MAKES NEITHER ANY EXPRESS WARRANTIES NOR ANY IMPLIED WARRANTIES, INCLUDING BUT NOT LIMITED TO ANY IMPLIED WARRANTY OF MERCHANTABILITY OR FITNESS FOR A PARTICULAR PURPOSE. This warranty provides you with specific legal rights, and you may also have additional rights that vary from state to state.

To obtain warranty coverage, contact the Xcellon Customer Service Department to obtain a return merchandise authorization ("RMA") number, and return the defective product to Xcellon along with the RMA number and proof of purchase. Shipment of the defective product is at the purchaser's own risk and expense.

For more information or to arrange service, visit www.xcellongear.com or call Customer Service at 212-594-2353.



Product warranty provided by the Gradus Group.

www.gradusgroup.com

Xcellon is a registered trademark of the Gradus Group. © 2014 Gradus Group LLC. All Rights Reserved.