

INTRODUCTION

The SteadyGrip™ is a ground handle designed to extend the GoPro® camera from the sky to the ground, allowing you to capture amazing action shots easier than ever before. The camera pitch controller allows precise camera angle control on the go using your mobile device as a display. The SteadyGrip's ergonomic design is capable of holding up to a 6.4 inch mobile device.

The GB203 is a 3-Axis brushless self-stabilizing gimbal, compatible with GoPro® Hero 3, Hero 3+, Hero 4 Black and Hero 4 Silver, extending the use of the GoPro® Camera to capture smooth and fluid photographs and video footage on the ground, and amazing video footage in the sky as well.

Please take the time to read through this entire instruction manual for more information on safety, battery charging, camera controls and more before filming your first hit video. Please also visit www.Yuneeec.com for additional information including product updates, bulletins, videos and more.

WINDOWS SYSTEM REQUIREMENTS

Windows XP (Service Pack 2 or later) or Vista
3.2GHz Pentium 4 or faster
Minimum 4GB of system RAM

MAC SYSTEM REQUIREMENTS

Mac OS® X 10.4.11 or later
2.0GHz Intel Core Duo or faster
Minimum 4GB of system RAM

GoPro® COMPATIBLE DEVICES

Android:
Depending on devices
Windows Phone (8 & 8.1)²
Apple iOS:
iphone/ipad/ipod touch

NOTICE: Please refer to the official website of GoPro® for the latest information.

SPECIFICATIONS

STEADYGRIP™

Height: 223mm (8.78 in)
Depth (front to back): 182mm (7.17 in)
Width: 70mm (2.76 in)
Weight (without gimbal/batteries): 254g (8.96 oz)
Angle Control Range (Pitch): 30° to -90°
Runtime: 240 min (depending on usage)

GB203

Dimensions: 110*80*115mm(4.33*3.15*4.53in)
Weight(without camera): 145g(5.11oz)
Pitch Control Range: 30°~-90°
Pitch Mechanical Range: 75°~-120°
Roll Mechanical Range: -45°~+45°
Yaw Mechanical Range: -45°~+45°
Compatible Device: GoPro®Hero 3, Hero 3+, Hero 4 Black, Hero 4 Silver
NOTICE: If use MK58, GoPro®Hero4 Black is suggested to achieve

NOTICES AND WARNINGS

IMPORTANT NOTE: All safety precautions and warnings, instructions, warranties and other collateral information is subject to change at the sole discretion of Yuneeec. For the most up-to-date information please visit the corresponding product page at www.Yuneeec.com or contact the nearest Yuneeec office or authorized distributor.

The following special language terms are used throughout the product literature to indicate various levels of potential harm when operating this product:

NOTICE: Procedures, which if not properly followed, create a possibility of property damage and/or little to no possibility of injury.

CAUTION: Procedures, which if not properly followed, create the probability of property damage and/or a possibility of serious injury.

WARNING: Procedures, which if not properly followed, create the probability of property damage, collateral damage and/or serious injury or create a high probability of superficial injury.

WARNING: Read the ENTIRE instruction manual to become familiar with the features of the product before operating. Failure to operate the product correctly can result in damage to the product, property and/or cause serious injury.

WARNING: This is a sophisticated consumer product. It must be operated with caution and common sense, and requires some basic mechanical ability. Failure to operate this product in a safe and responsible manner could result in damage to the product, property and/or cause serious injury. This product is not intended for use by children without direct adult supervision. Do not use with incompatible components or alter this product in any way outside of the instructions provided by Yuneeec. The instruction manual contain instructions for safety, operation and maintenance. It is essential to read and follow all the instructions and warnings prior to assembly, setup and/or use in order to operate the product correctly and avoid damage or serious injury.

AGE RECOMMENDATION: NOT FOR CHILDREN UNDER 14 YEARS. THIS IS NOT A TOY.

GENERAL SAFETY PRECAUTIONS AND WARNINGS

WARNING: Failure to use this product in the intended manner as described in instruction manual can result in damage to the product, property and/or cause serious injury. This product is not a toy! If misused it can cause serious bodily harm and damage to property.

WARNING: As the user of this product you are solely and wholly responsible for operating it in a manner that does not endanger yourself and others or result in damage to the product or the property of others.

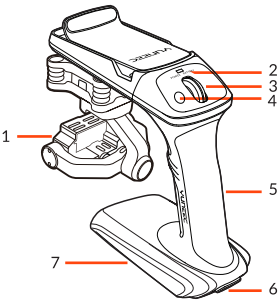
Always allow GB203 and SteadyGrip™ to initialize properly by setting the Steady-Grip™ on a flat and stable surface prior to switching it on and allowing the Steady-Grip™ and GB203 to initialize properly which sometimes takes about 12 seconds.

Always operate your SteadyGrip™ in a respectful and safe manner.

OVERVIEW

SteadyGrip™ and GB203 for GoPro® Cameras

1. GB203
2. Main Status LED
3. Pitch Control Roller Wheel
4. Mode Switch Button
5. Rubberized Ergonomic Grip
6. On/Off Switch
7. 8x AA Battery Compartment



BATTERY WARNINGS AND USAGE GUIDELINES

WARNING: Alkaline Batteries May explode or leak, and cause burn injury if recharged, disposed of in fire, mixed with a different battery type, inserted backwards or disassembled. Replace all batteries at the same time. Do not carry batteries loose in your pocket or purse. Do not remove the battery label.

WARNING: All instructions and precautions must be read and followed exactly and you must follow instructions of the battery manufacturer.

WARNING: procedures, which if not properly followed, create the probability of property damage, collateral damage and serious injury or create a high probability of superficial injury.

Failure to exercise care while using this product and comply with the following conditions and guidance could result in product malfunction, excessive heat, fire, property damage, and ultimately injury. Lithium Ion batteries are not toys. For the purpose of the document Li-Ion, Li-Po, Li-Fe, NiCd or NiMH batteries will be described as "Batteries".

Handling and Storage:

- Never alter, puncture or impact Batteries or related components.
- Do not directly connect the terminals with metal objects. This will short-circuit Batteries, resulting in heat and electrical discharge.
- Never store loose Batteries together, the Batteries' terminals may contact one another causing a short circuit.
- Never expose Batteries to extreme temperatures or direct sunlight.
- Always disconnect Batteries when not in use.

Before the First Charge:

- Ensure batteries are not damaged, as this may cause a short circuit of fire. Charging
- Always refer to your charger's manual to ensure safe operation.
- Always charge Batteries in an open area away from flammable materials, liquids and surfaces.
- Never charge Batteries that are hot to the touch (above 120°F)

If at any time Batteries become damaged, hot, or begin to balloon or swell, discontinue charging (or discharging) immediately. Quickly and safely disconnect the charger. Then place the Batteries and/or charger in a safe, open area away from flammable materials in an approved Li-Po bag to observe. After one hour, remove the Batteries from service. DO NOT continue to handle, attempt to use, or ship the Batteries. Failure to follow these procedures can cause damage to Batteries, personal property or cause serious injury. Damaged or swollen Batteries can be unstable and very hot. DO NOT touch batteries until they have cooled. Dispose of batteries in the manner required by your city, county, state or country. Contact the appropriate Yuneeec Product Support Office to speak to a service technician for more information.

In the event of fire, a Class D, dry chemical fire extinguisher must be used then batteries must be placed inside of an approved Li-Po bag.

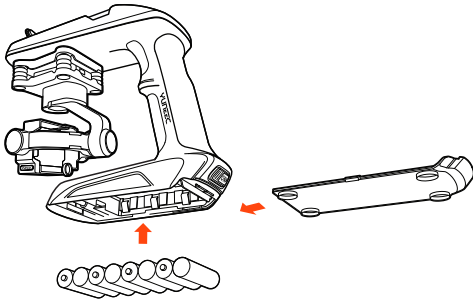
Additional Guidelines and Warnings:

- In the event of a crash, always quickly and safely disconnect and remove Batteries from the model. Then follow the previously listed safety procedures.
- If the internal contents of Batteries come into contact with your skin, wash the affected area(s) with soap and water immediately. If it comes into contact with your eye(s), flush them with generous amounts of water for 15 minutes and seek immediately medical attention.

INSTALLING THE AA BATTERIES

WARNING: Alkaline Batteries May explode or leak, and cause burn injury if recharged, disposed of in fire, mixed with a different battery type, inserted backwards or disassembled. Replace all batteries at the same time. Do not carry batteries loose in your pocket or purse. Do not remove the battery label.

NOTICE: The use of rechargeable batteries is only recommended.



STEP 1) Remove the Battery Cover / Door from the bottom of the SteadyGrip™

Hold the bottom of the SteadyGrip™ toward yourself with the front part facing downward. Slide the battery cover / door upward with slight force and inspect the AA battery compartment.

STEP 2) Install 8x AA Batteries

Install 8x AA Batteries as illustrated.

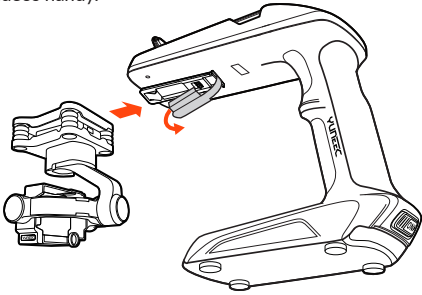
STEP 3) Re-installing the Battery Cover / Door on the bottom of the SteadyGrip™

Once you've installed 8 fresh AA batteries, Hold the bottom of the SteadyGrip™ toward yourself with the front part facing downward. Slide the battery cover / door downward with slight force and ensure you hear and feel a noticeable 'click' indicating the battery cover / door has been closed securely.

ATTACHING THE GB203 TO THE STEADYGRIP™

WARNING: Before switching on the SteadyGrip™ it is highly recommended to first securely attach the GB203 to your SteadyGrip™.

QUICK TIP: Make sure that you have your microSD card with lots of space for photos and videos handy.



STEP 1) Remove the protective cover for the contactor as illustrated.

STEP 2) Carefully slide the top part of the GB203 (that also attaches below the nose of the TYPHOON) onto the mount below the front part of the SteadyGrip™. A corresponding 'click' will be noticed once the GB203 has securely been installed into the slide-in mount on the SteadyGrip™.



STEP 3) Powering on and initialization. Place your SteadyGrip™ on a flat and stable surface, then switch on the SteadyGrip™ and it will initialize after 12 seconds of no movement or vibration. The LED Status indicator on the GB203 will blink green slowly when initialization is completed.

NOTICE: The GB203 can be supplied with power through SteadyGrip™ by the Lipo Balance Connetor Charge Lead (sold separately) when the contact is damaged.

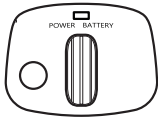
SteadyGrip™ LED STATUS:

Main Status LED:

Upon Powering on: Green LED blinking for twice and then solid GREEN
Low Voltage Warning: RED LED blinking slowly
Power Cut-off: RED LED blinking quickly
Pitch Follow Function on: GREEN LED solid
Pitch Follow Function off: GREEN LED blinking

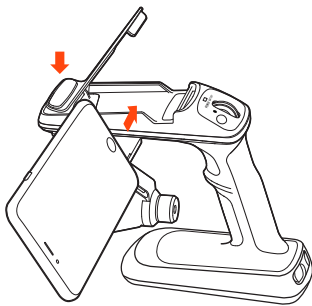
GB203 LED Status:

GB203 Connecting with the SteadyGrip: LED blinking green slowly
GB203 Failing to Connect with the SteadyGrip: LED off
GB203 Connecting with the Remote Controller: LED blinking green slowly
GB203 Error: LED blinking red



ATTACHING A MOBILE DEVICE TO THE STEADYGRIP™

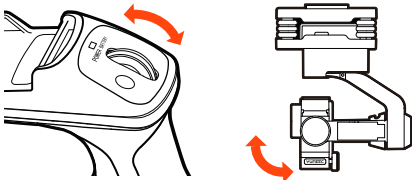
Step 1) Press the Curved Lip at the top front of the SteadyGrip™ as illustrated and fit your Mobile Device with the screen facing toward the Main LED and Pitch Control Wheel.



Step 2) Bind your Mobile Device to the GoPro® camera.

USING THE CAMERA PITCH CONTROL WHEEL

The SteadyGrip™ features a camera pitch controller that allows precise camera angle control on the go. Simply roll the pitch control wheel forward to move the camera pitch/angle downward and roll the pitch control wheel backward to move the camera pitch/angle upward. Please review these instructions along with the illustrations to familiarize yourself on how to control the GB203 and GoPro® camera with your SteadyGrip™.



CAMERA CONTROL

Please be sure to set photo or video mode for GoPro® Camera BEFORE installing it into the GB203. Any operation related to camera controls should be referred to and downloaded according to the official website of GoPro®. GoPro® requires APP to take photos and record videos. NOTICE: MK58 is for long-distance real-time image transmission when installing it on the aircraft.

SWITCHING THE MODE

There are two modes of Pitch Follow Mode and Angle Mode. Pitch Follow Mode allows the gimbal camera to track SteadyGrip in pitch direction. The Main Status LED indicator will be solid green. In Angle Mode, the camera lens sticks to a fixed direction instead of following the movement of the SteadyGrip. The user can control the Pitch Direction through pitch control roller wheel.

NOTICE: The default mode of SteadyGrip is Pitch Follow Mode.

To Enter Angle Mode:

Press the Mode Switch Button on the top of the SteadyGrip to exit the Pitch Follow mode. The Main Status LED indicator will blink GREEN. The SteadyGrip will enter Angle Mode.

To Enter Pitch Follow Mode:

Press Mode Switch Button again to enter Pitch Follow Mode. The Main Status LED indicator will be solid green.

NOTE: When SteadyGrip™ is in Pitch Follow status, the gimbal camera tracks SteadyGrip™ in pitch direction, and the gimbal pitch control roller wheel on SteadyGrip™ is disabled.

FCC STATEMENT:

This equipment has been tested and found to comply with the limits for Part 15 of the FCC rules. These limits are designed to provide reasonable protection against harmful interference in a residential installation. This equipment generates, uses and can radiate radio frequency energy and, if not installed and used in accordance with the instructions, may cause harmful interference to radio communications. However, there is no guarantee that interference will not occur in a particular installation. If this equipment does cause harmful interference to radio or television reception, which can be determined by turning the equipment off and on, the user is encouraged to try to correct the interference by one or more of the following measures:
● Reorient or relocate the receiving antenna.
● Increase the separation between the equipment and receiver.

- Connect the equipment to an outlet on a circuit different from that to which the receiver is connected. This device complies with part 15 of the FCC rules. Operation is subject to the following two conditions:
(1) This device may not cause harmful interference, and (2) this device must accept any interference received, including interference that may cause undesired operation.

NOTE: This equipment has been tested and found to comply with the limits for a Class B digital device, pursuant to part 15 of the FCC Rules. These limits are designed to provide reasonable protection against harmful interference in a residential installation. This equipment generates, uses and can radiate radio frequency energy and, if not installed and used in accordance with the instructions, may cause harmful interference to radio communications. However, there is no guarantee that interference will not occur in a particular installation. If this equipment does cause harmful interference to radio or television reception, which can be determined by turning the equipment off and on, the user is encouraged to try to correct the interference by one or more of the following measures:
—Reorient or relocate the receiving antenna.
—Increase the separation between the equipment and receiver.
—Connect the equipment into an outlet on a circuit different from that to which the receiver is connected.
—Consult the dealer or an experienced radio/TV technician for help.

RF EXPOSURE WARNING

- This equipment must be installed and operated in accordance with provided instructions and the antenna(s) used for this transmitter must be installed to provide a separation distance of at least 20 cm from all persons and must not be co-located or operating in conjunction with any other antenna or transmitter. End-users and installers must be provide with antenna installation instructions and transmitter operating conditions for satisfying RF exposure compliance.

IC RADIATION EXPOSURE STATEMENT FOR CANADA

This device complies with Industry Canada licence-exempt RSS standard(s). Operation is subject to the following two conditions: (1) this device may not cause interference, and (2) this device must accept any interference, including interference that may cause undesired operation of the device. Le présent appareil est conforme aux CNR d'Industrie Canada applicables aux appareils radio exempts de licence. L'exploitation est autorisée aux deux conditions suivantes : (1) l'appareil ne doit pas produire de brouillage, et (2) l'utilisateur de l'appareil doit accepter tout brouillage radioélectrique subi, même si le brouillage est susceptible d'en compromettre le fonctionnement.

This equipment complies with IC RSS-102 radiation exposure limit set forth for an uncontrolled environment. Cet équipement respecte les limites d'exposition aux rayonnements IC définies pour un environnement non contrôlé

Any information above might be changed due to the software update. For the latest documents, please check the official website.

CUSTOMER SERVICE

http://yuneeec.com/support

YUNEEC USA

5555 Ontario Mills Parkway,
Ontario, CA91764, USA
1 855 2848888
sales@yuneeec.com

YUNEEC HK

2/F, Man Shung Industrial Building,
7 Lai Yip Street, Kwon Tong,
Kowloon, Hong Kong
852 3616 6071
asiasales@yuneeec.com

YUNEEC EU

Nikolaus-Otto-Strasse 4
24568 Kaltenkirchen, Germany
+49 4191 932620
eusales@yuneeec.com

YUNEEC AU

53 Ellemssea Circuit, Lonsdale
South Australia 5160
+61 (0) 8 8186 3301
aussales@yuneeec.com

This device complies with part 15 of the FCC Rules. Operation is subject to the following two conditions: (1) This device may not cause harmful interference, and (2) this device must accept any interference received, including interference that may cause undesired operation.

